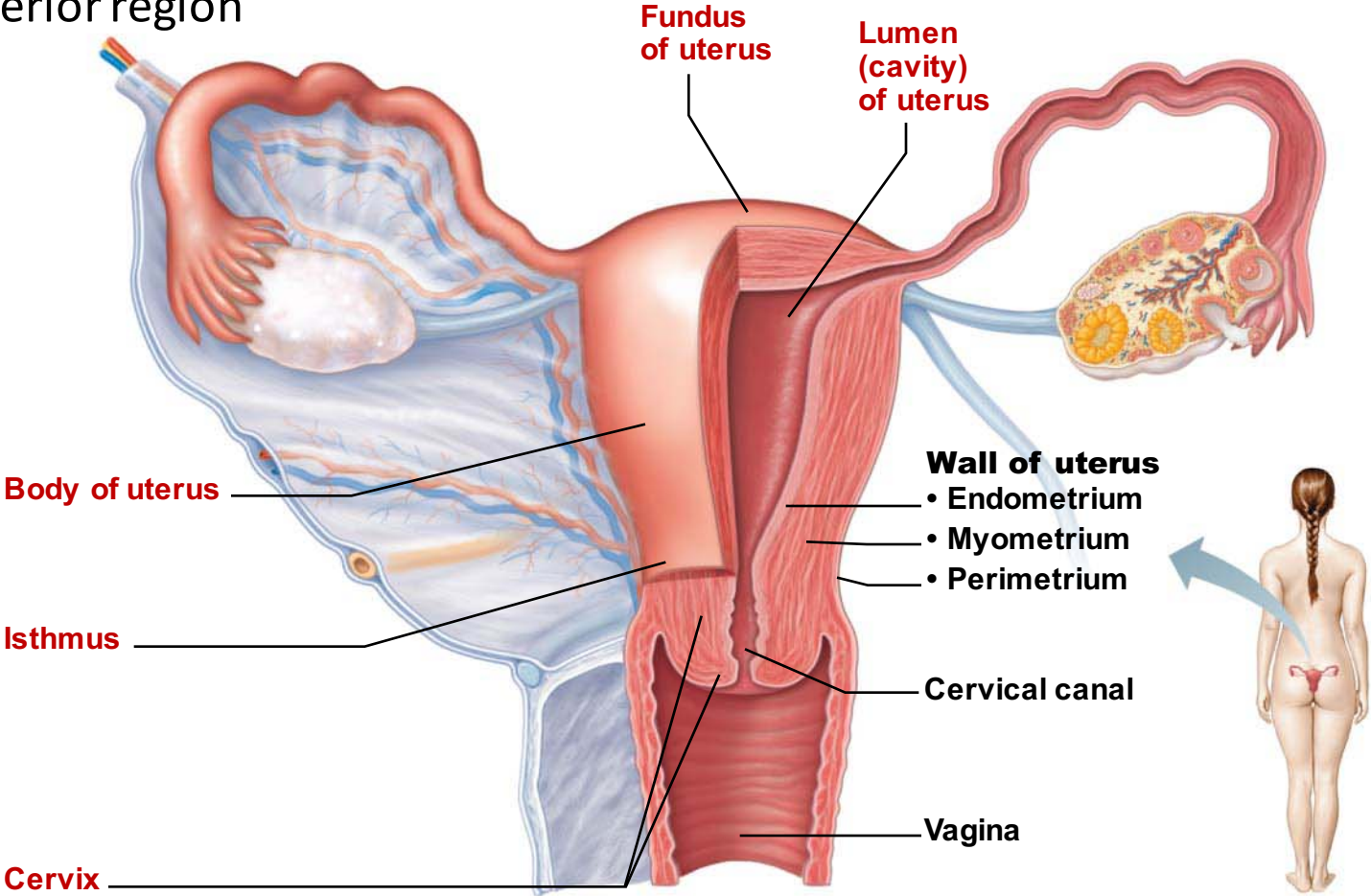


# Uterine body

- Body:** major portion
- Fundus:** rounded superior region
- Isthmus:** narrowed inferior region
- Cervix:** narrow neck



**(a) Posterior view**

## **Uterus: ligaments (woman)**

The ligaments of the uterus are 10 in number:

one **anterior** (vesicouterine fold of peritoneum);

one **posterior** (rectouterine fold of peritoneum);

two **lateral** or **broad**;

two **uterosacral**;

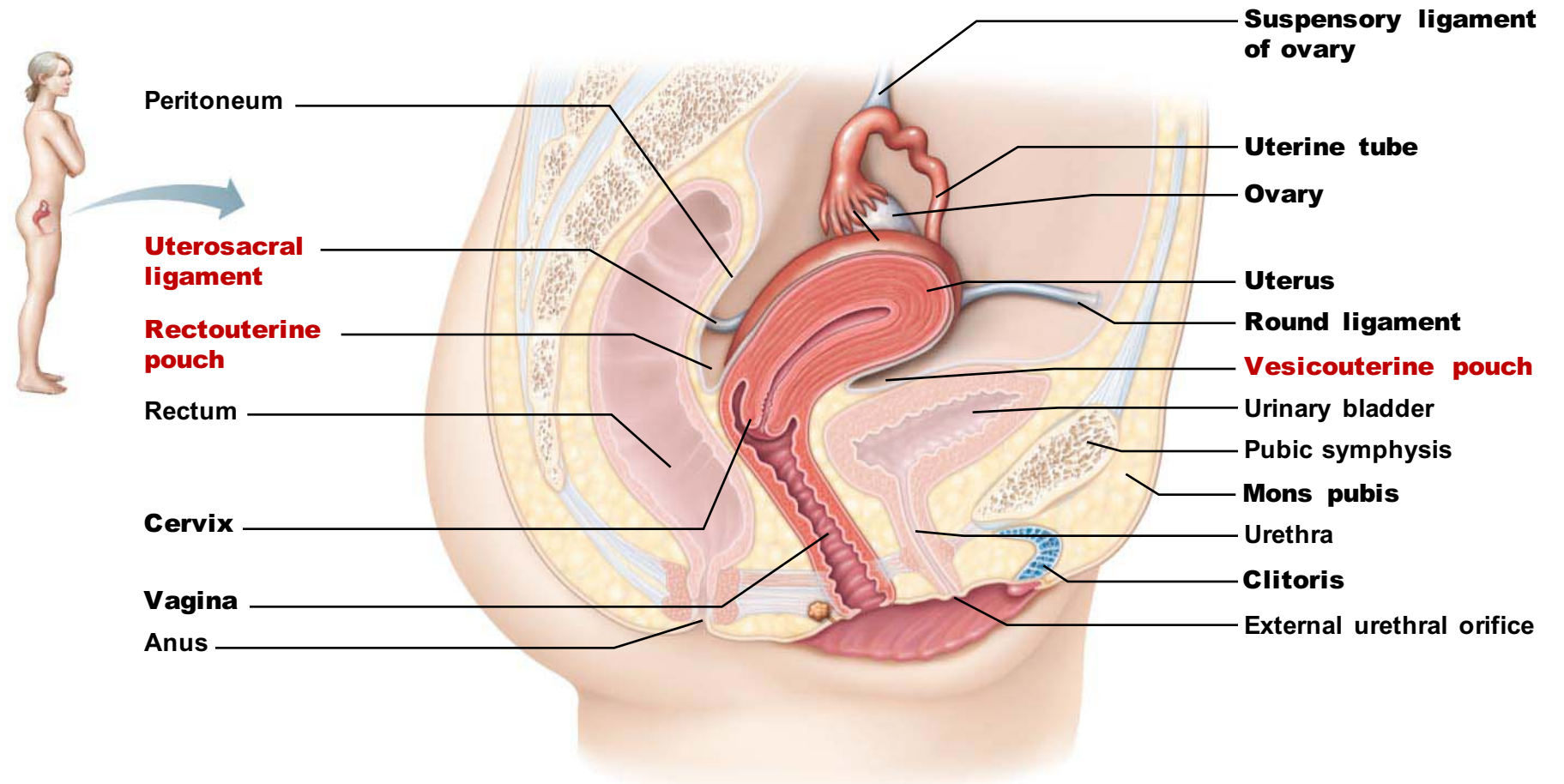
two **cardinal (lateral cervical) ligaments**; and

two **round ligaments**.

**Anterior ligament:** consists of the **vesicouterine fold** of peritoneum, which is reflected on to the bladder from the front of the uterus

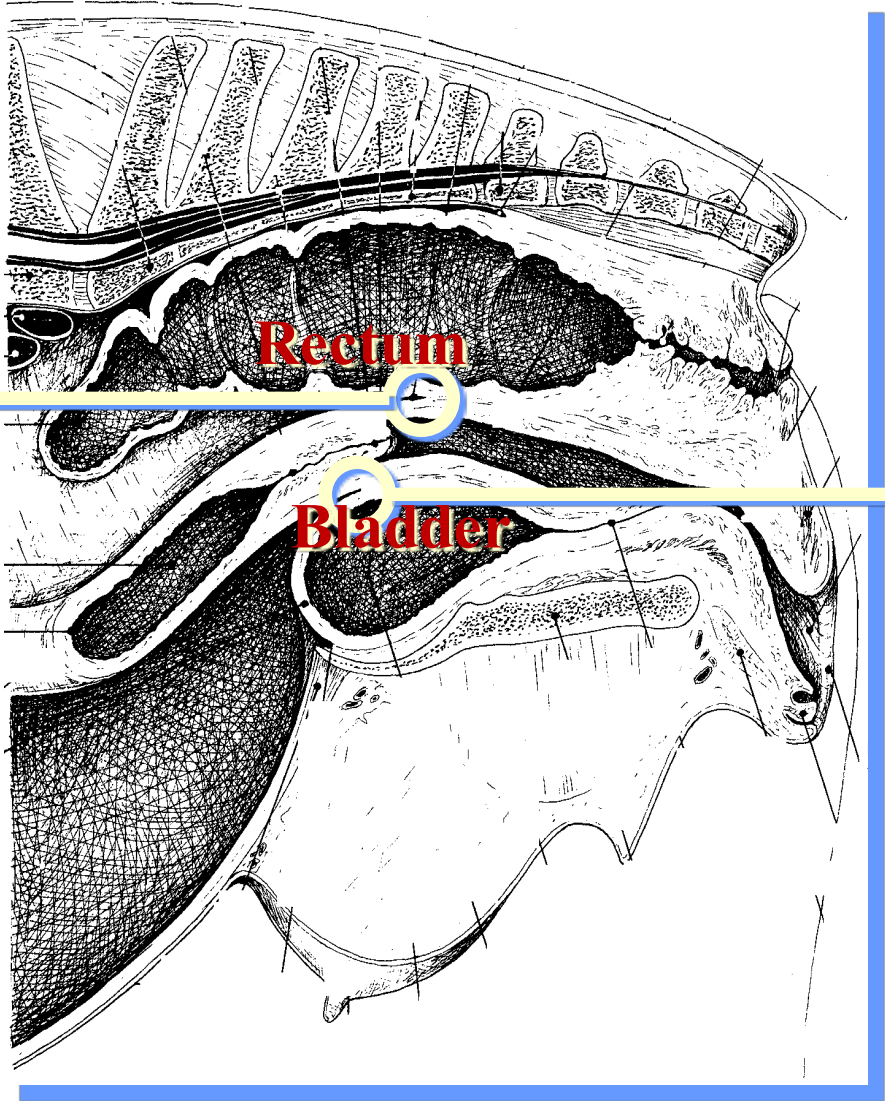
**Posterior ligament:** consists of the **rectouterine fold** of peritoneum, which is reflected from cervix on to the front of the rectum.

**Uterosacral ligaments:** secure uterus to sacrum



# Domestic animals

rectouterine fold



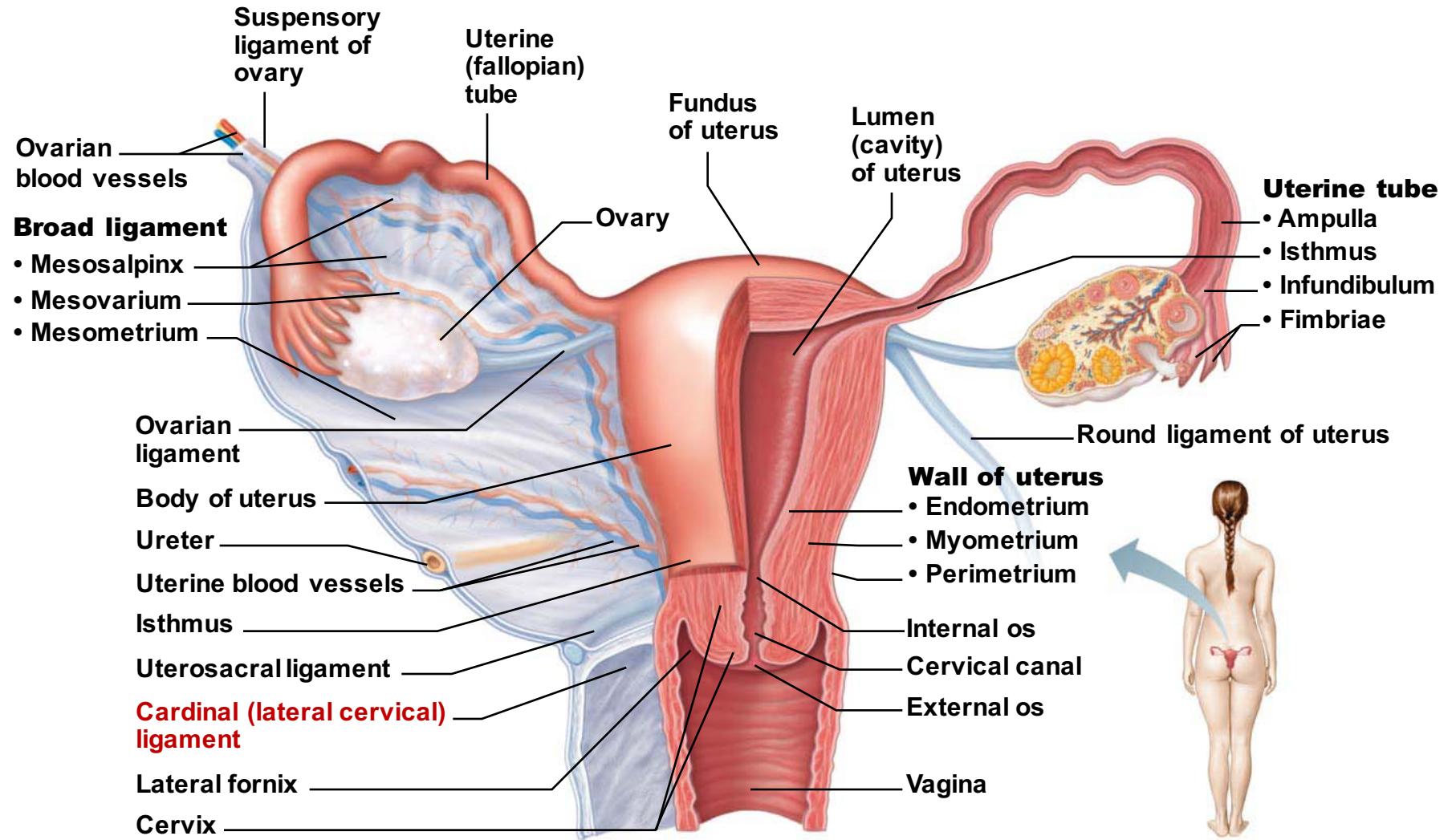
Rectum

Bladder

vesicouterine fold

# cardinal (lateral cervical) ligaments:

from cervix and superior vagina to pelvic lateral walls

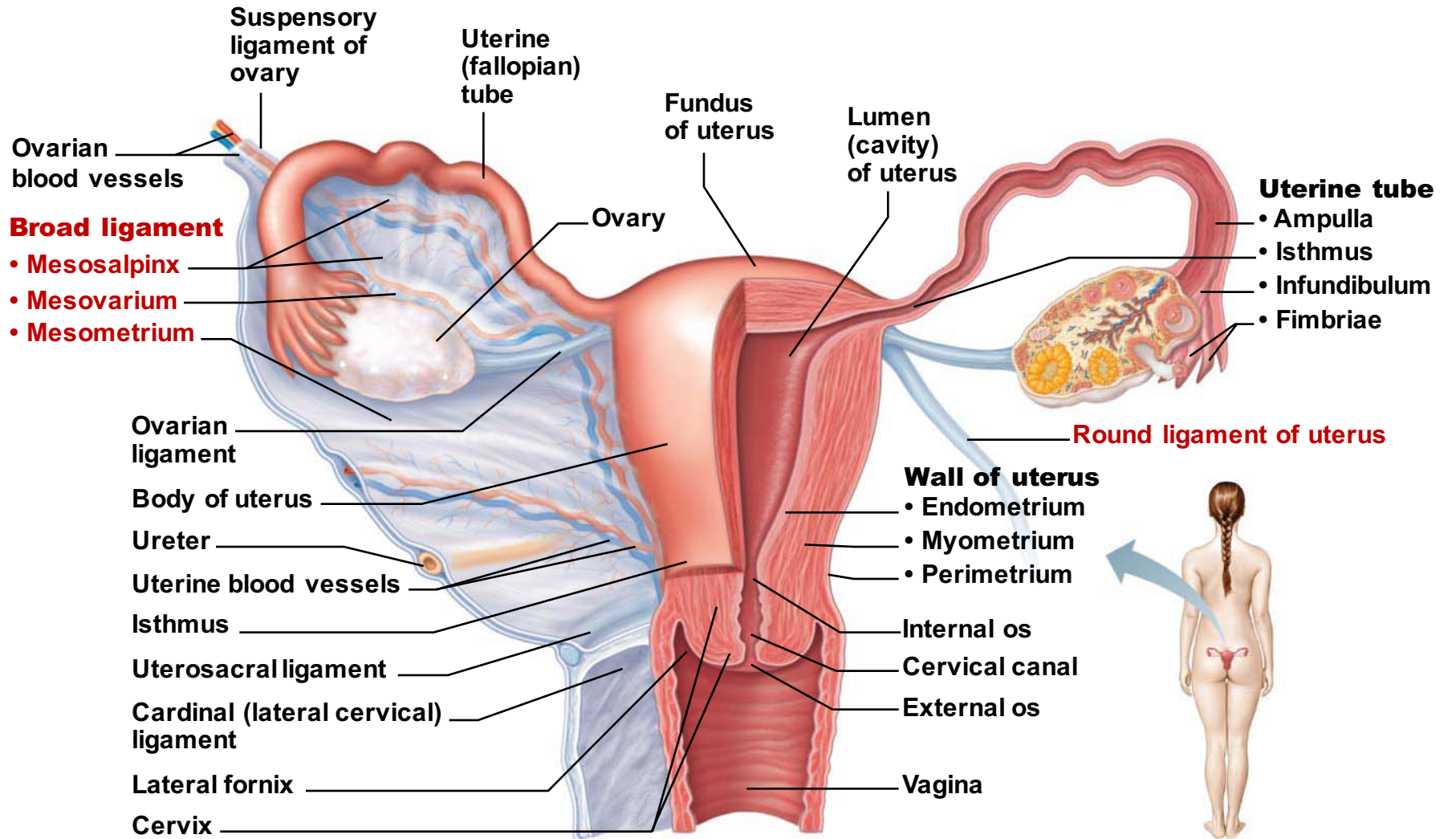


(a) Posterior view

**Round ligaments:** bind uterus to anterior wall

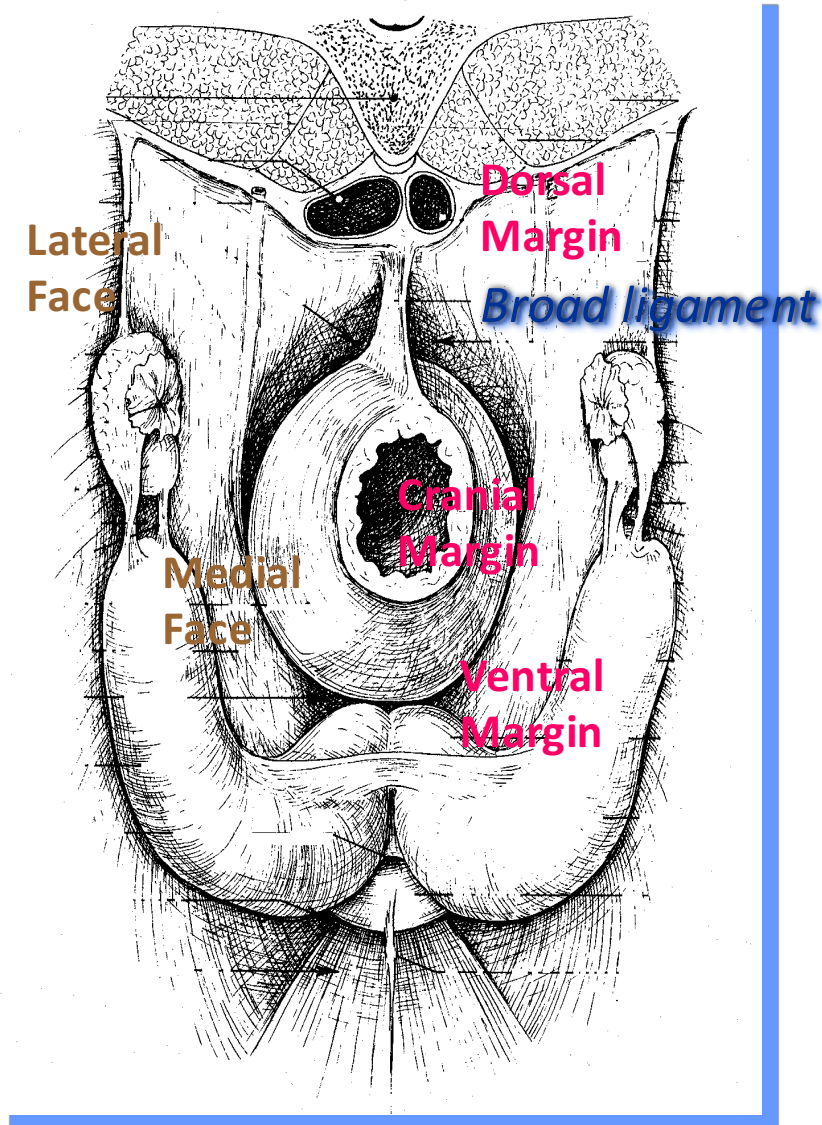
**Broad ligaments:** a fold of peritoneum which is reflected from the margin of the uterus to the lateral walls of the pelvis

**Mesometrium:**  
lateral support of  
broad ligament

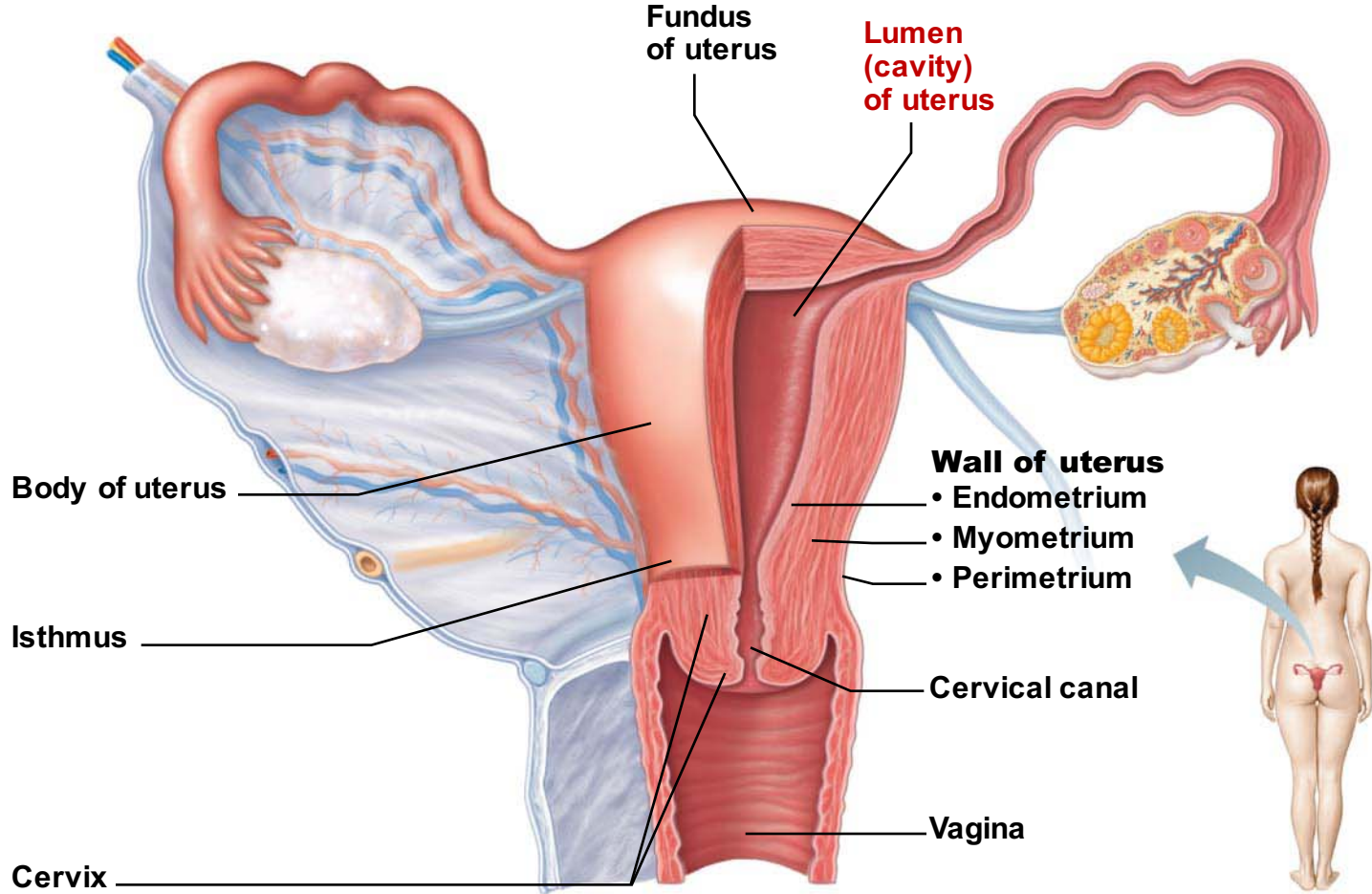


**(a) Posterior view**

# The broad ligaments in domestic animals



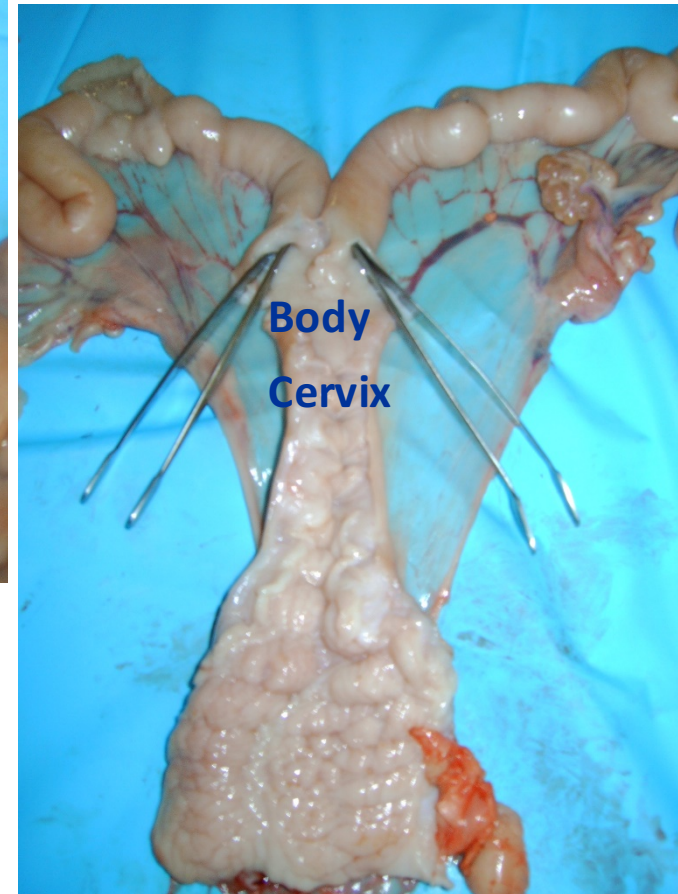
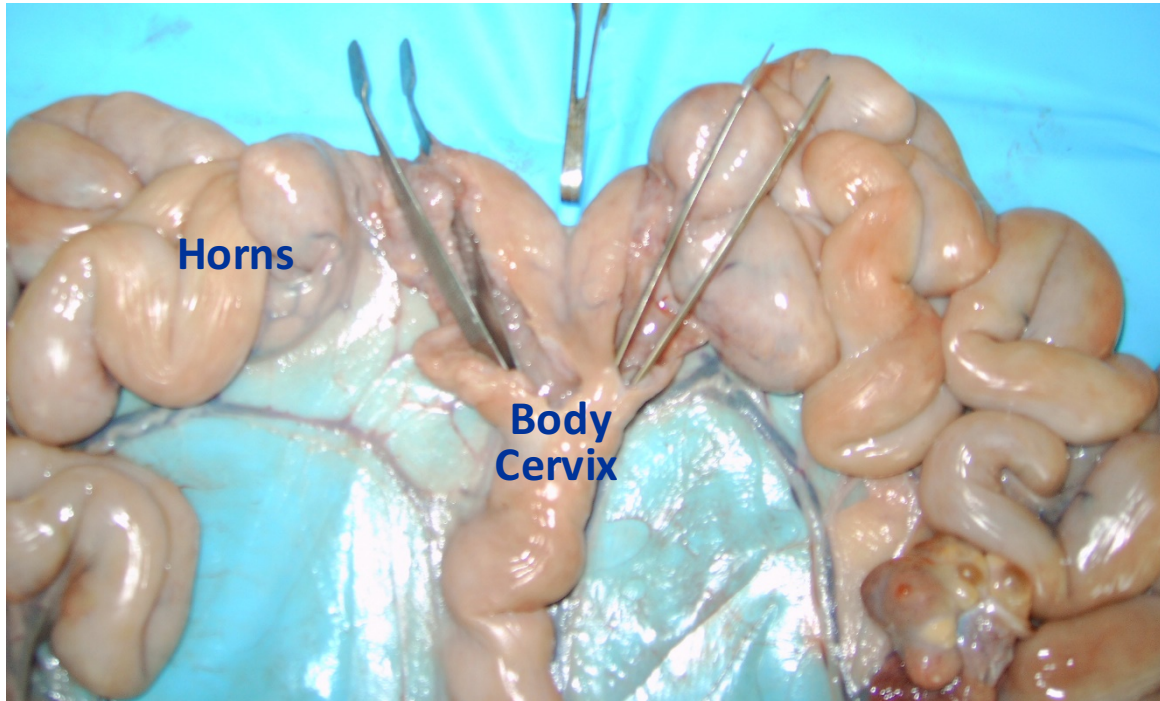
# Uterus cavity



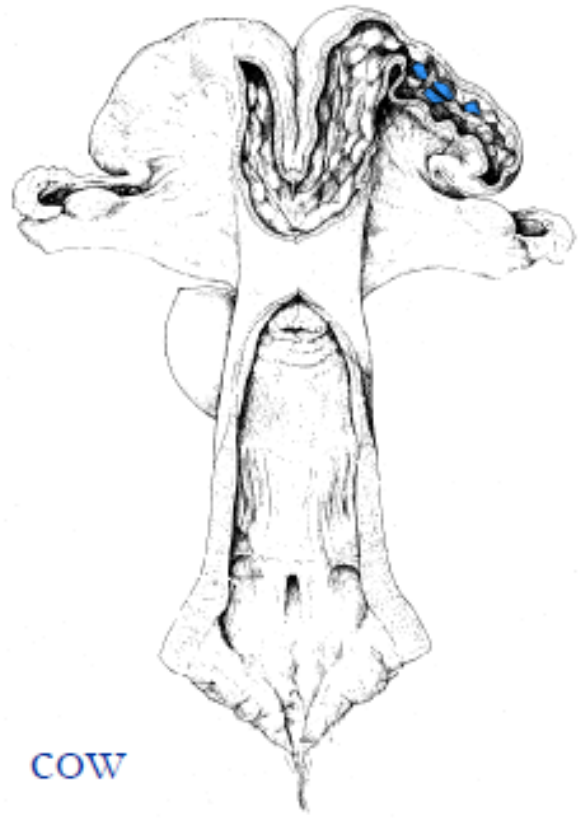
**(a) Posterior view**



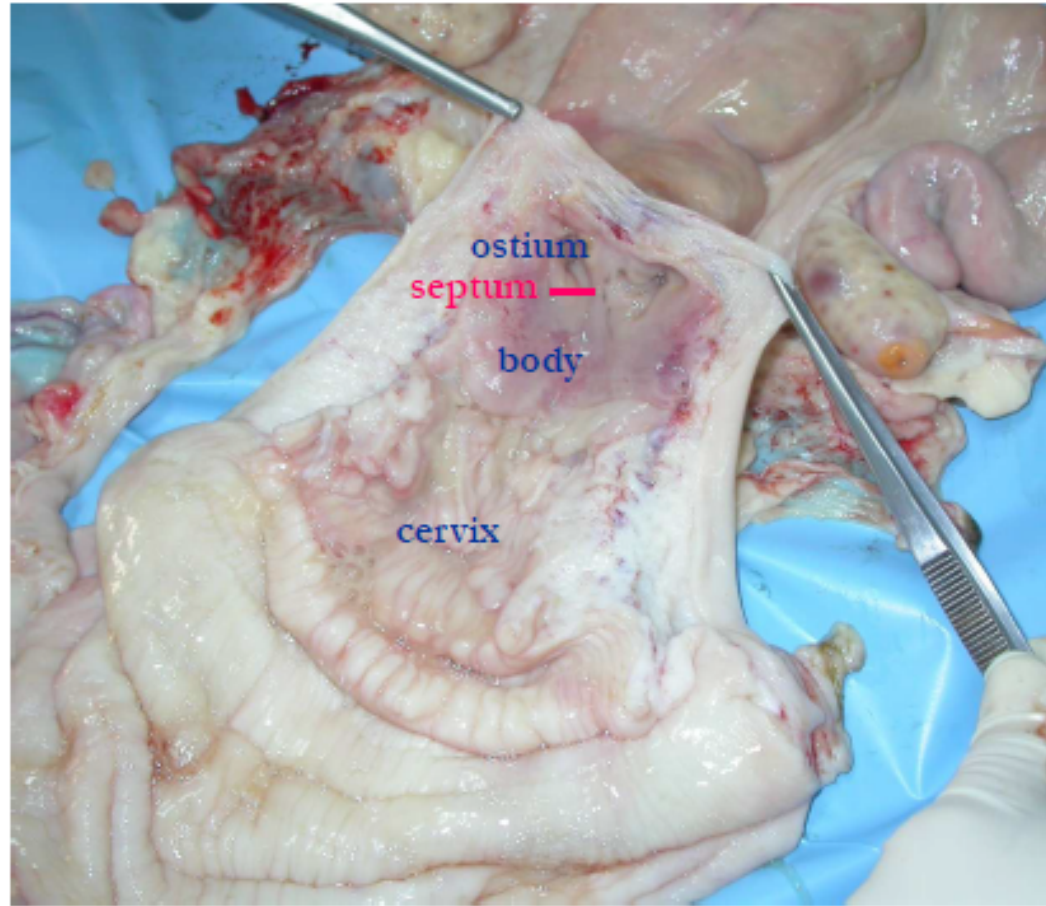
# Uterus cavity



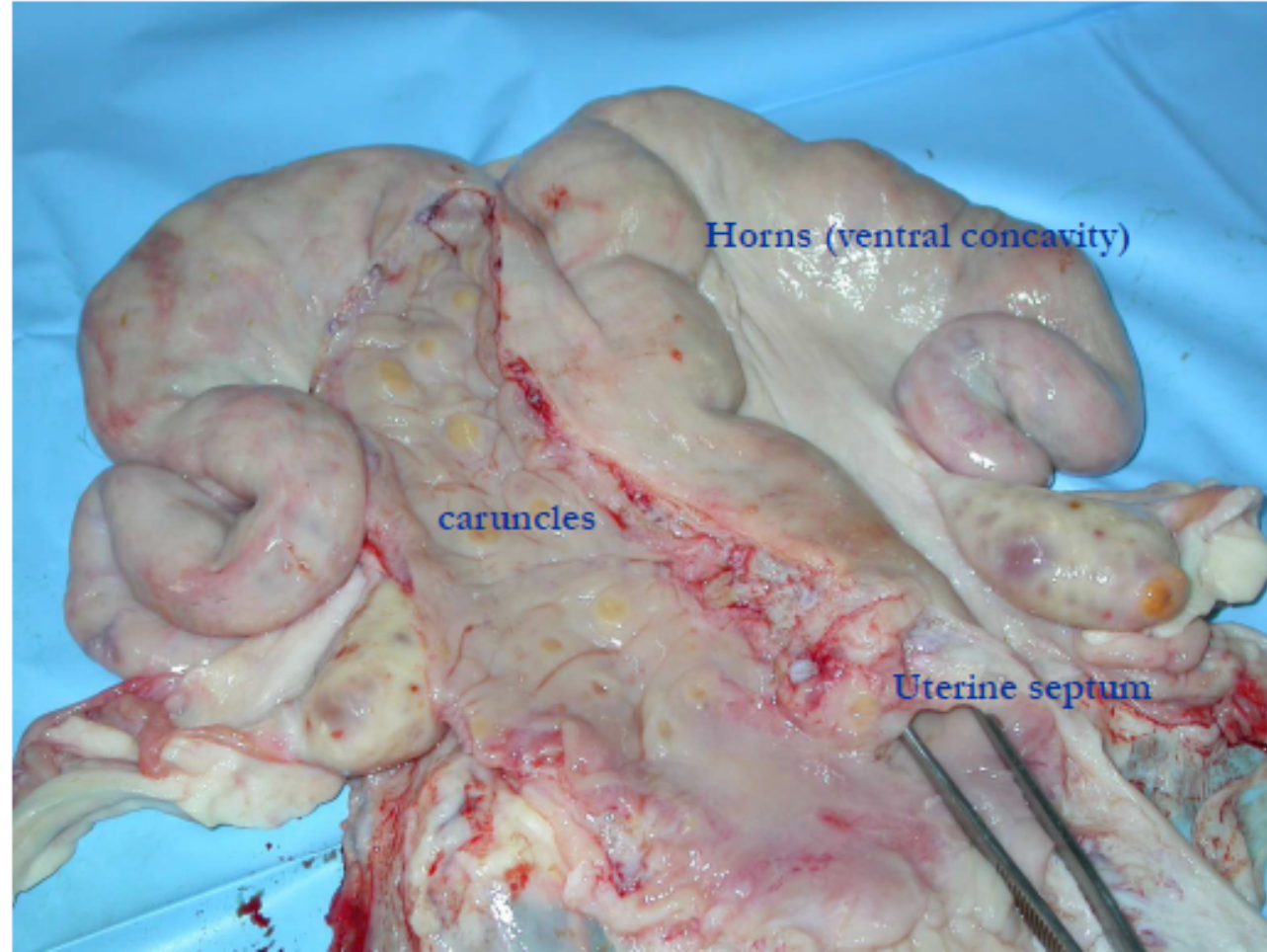
## Uterus: cavity



COW



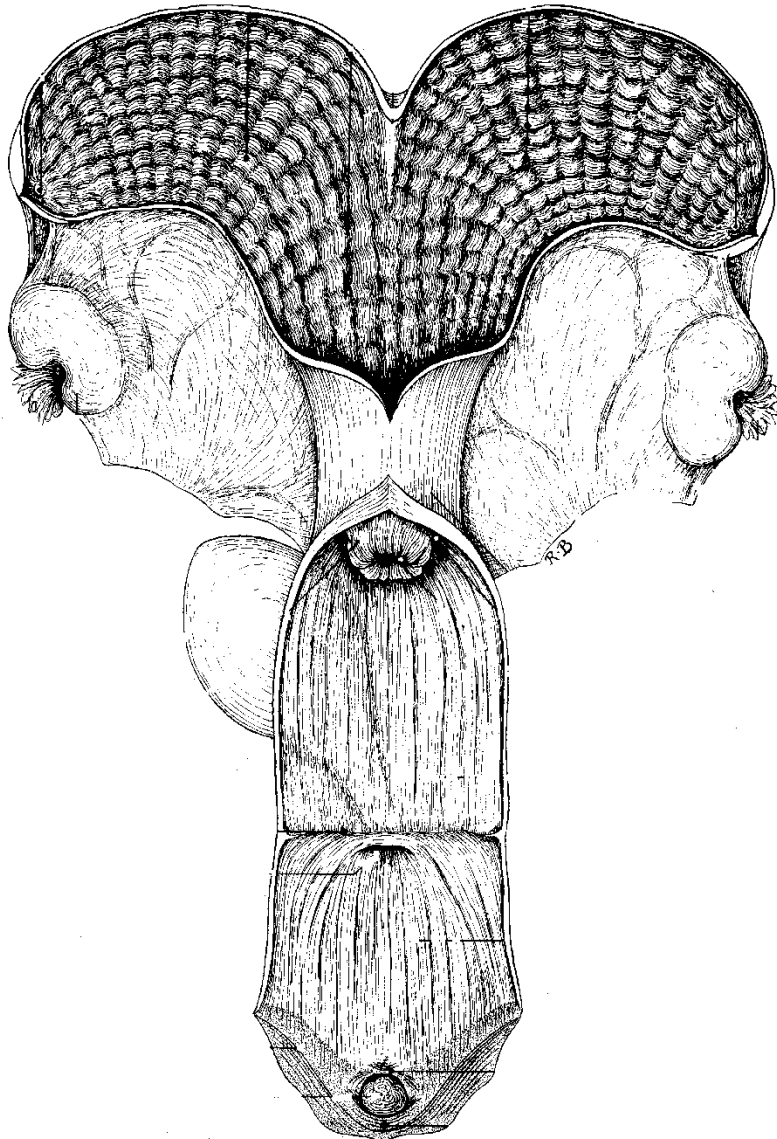
# Uterus: cavity



## Uterus: cavity



## Uterus cavity



mare

The body is long and does not show a septum. The uterus has endometrial folds which are parallel to the length of the uterus.

## Cervix

**Cervix:** narrow neck, or outlet; projects into vagina

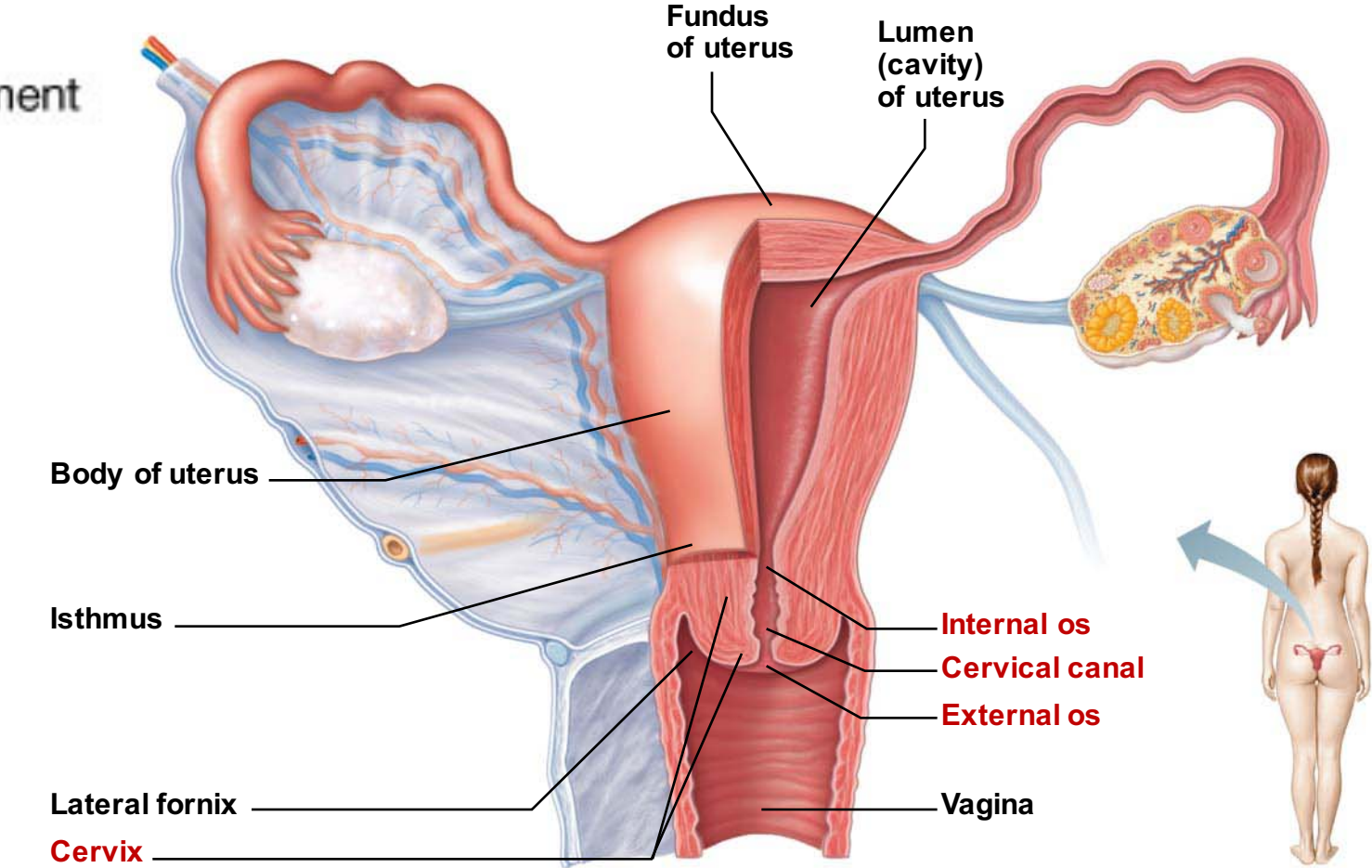
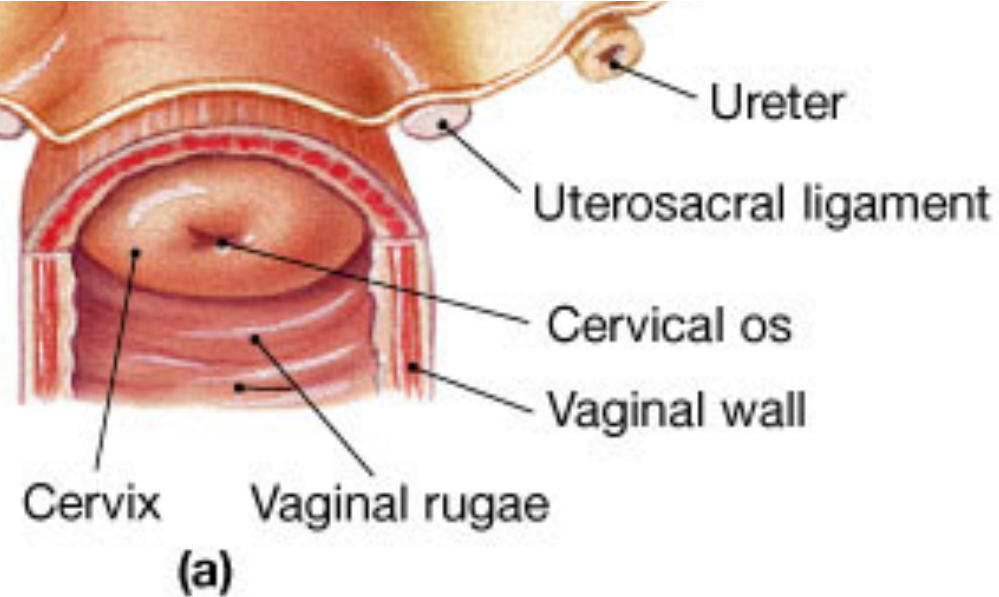
**Cervical canal** communicates with:

Vagina via *external os*

Uterine body via *internal os*

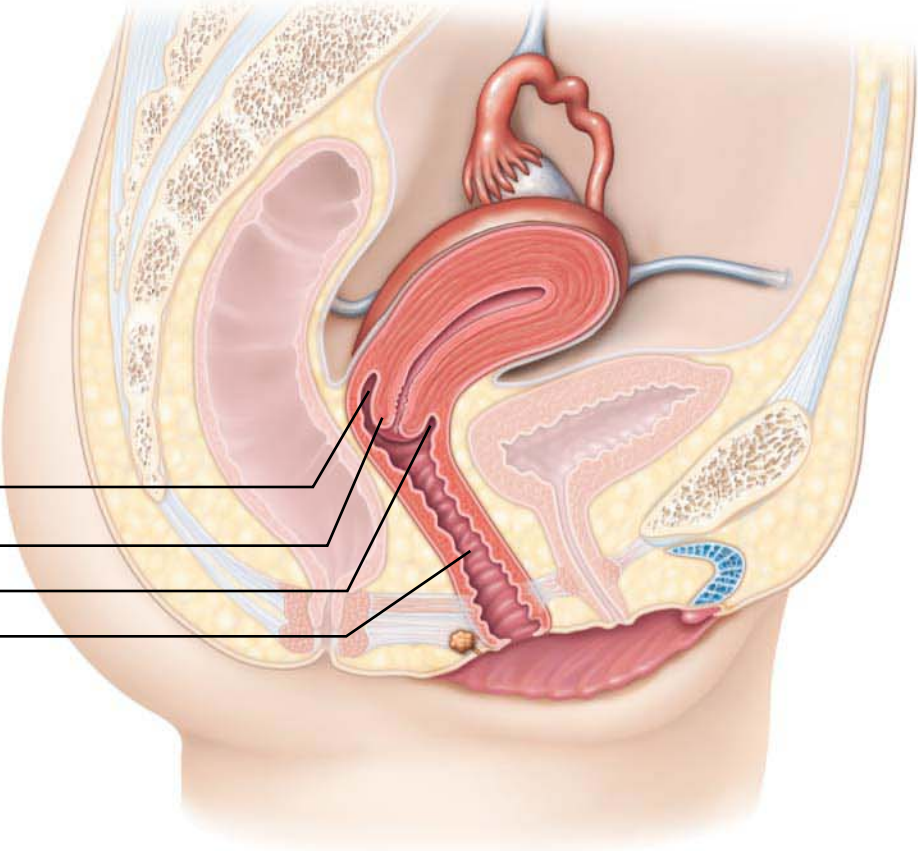
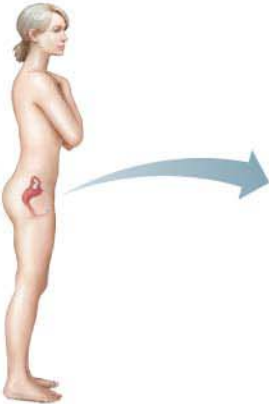
*Cervical glands* secrete mucus that blocks sperm entry except during estrus

# Cervix



**(a) Posterior view**

# Cervix



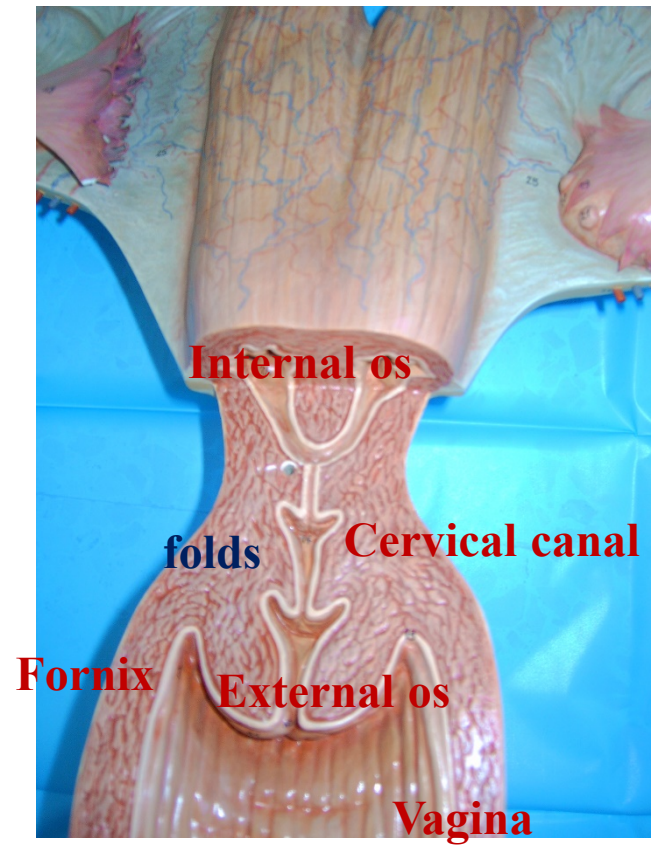
- Posterior fornix** \_\_\_\_\_
- Cervix** \_\_\_\_\_
- Anterior fornix** \_\_\_\_\_
- Vagina** \_\_\_\_\_



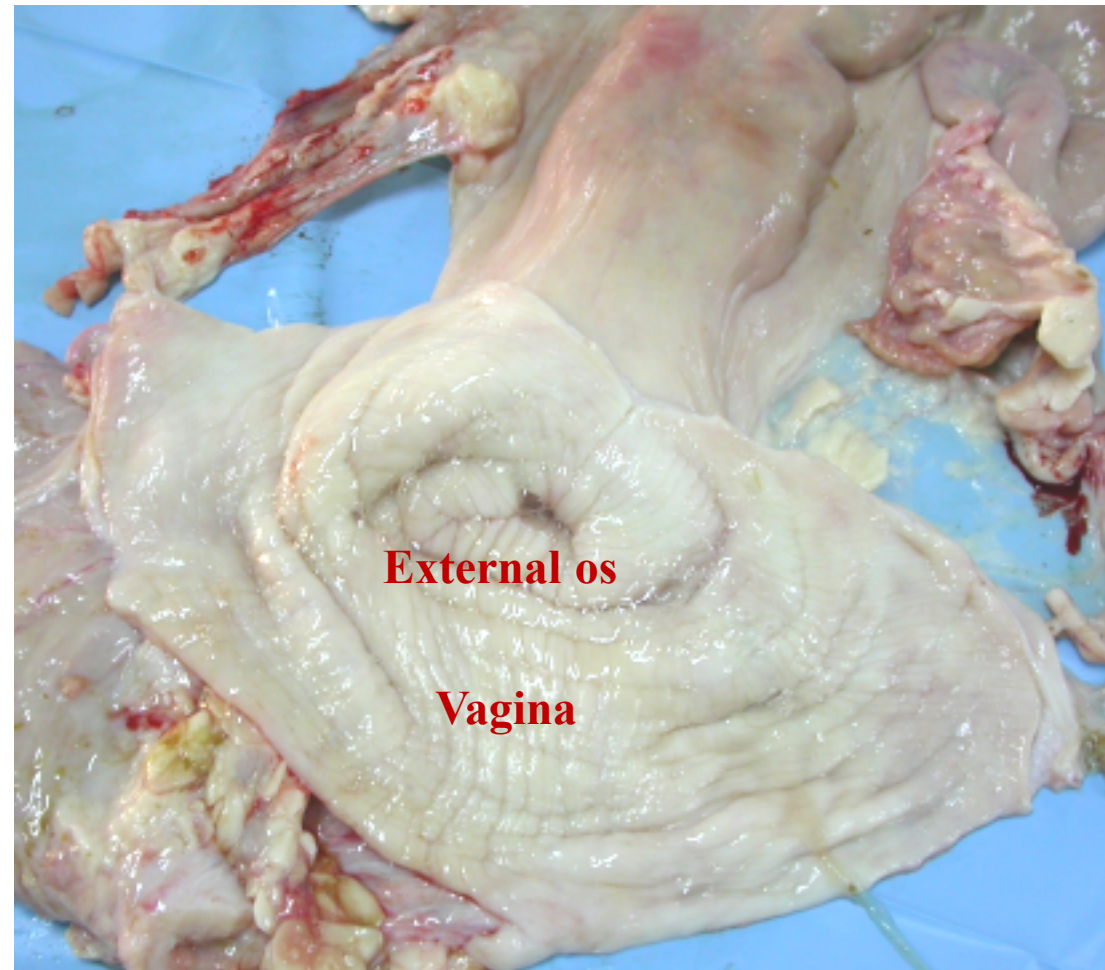
## Cervix: domestic animals

- The lumen of the cervix is the cervical canal.
- The canal is formed by, and often almost occluded by mucosal folds.
  - Single fold in the queen and bitch
  - Multiple folds protruding into the cervical canal in the cow, ewe, and mare.
- The cervical canal opens cranially into the body of the [uterus](#) at the internal uterine ostium.
- The cervical canal opens caudally into the [vagina](#) at the external uterine ostium.

# Cervix: cow



**COW**



## Cervix: cow

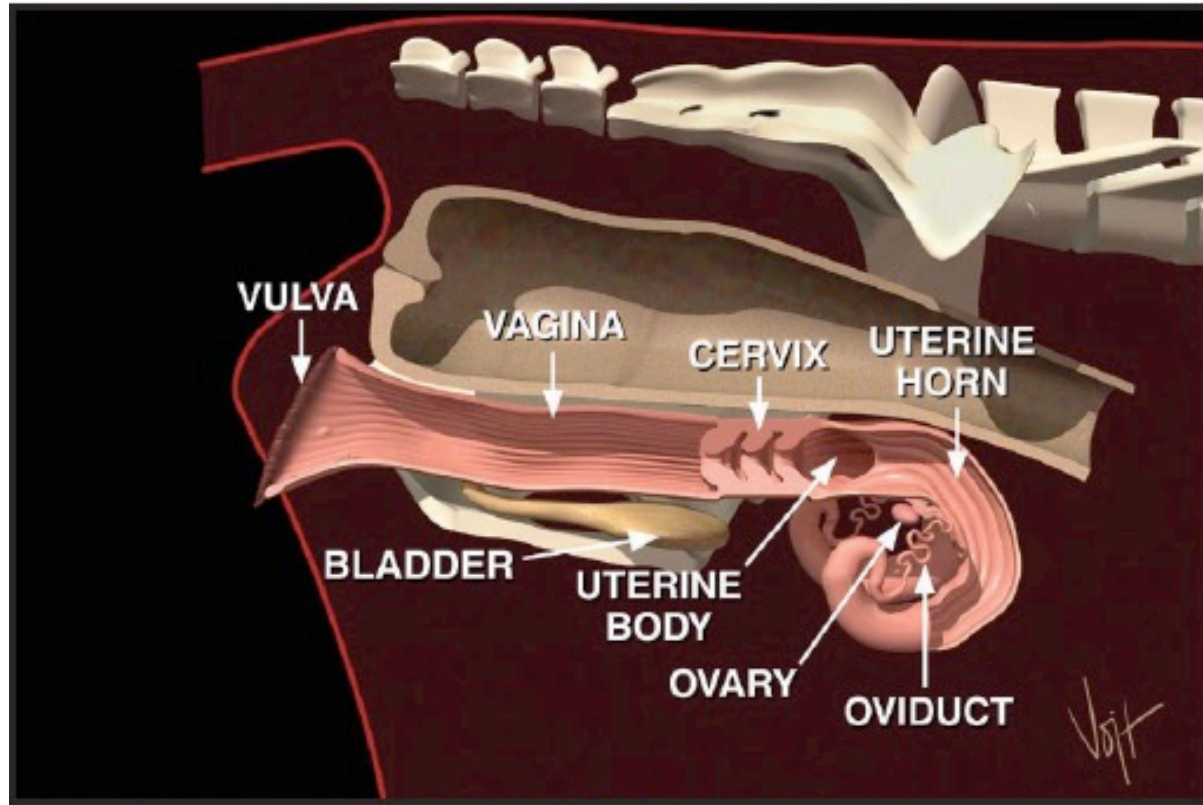


Figure 1. Side view of the cow's reproductive system.

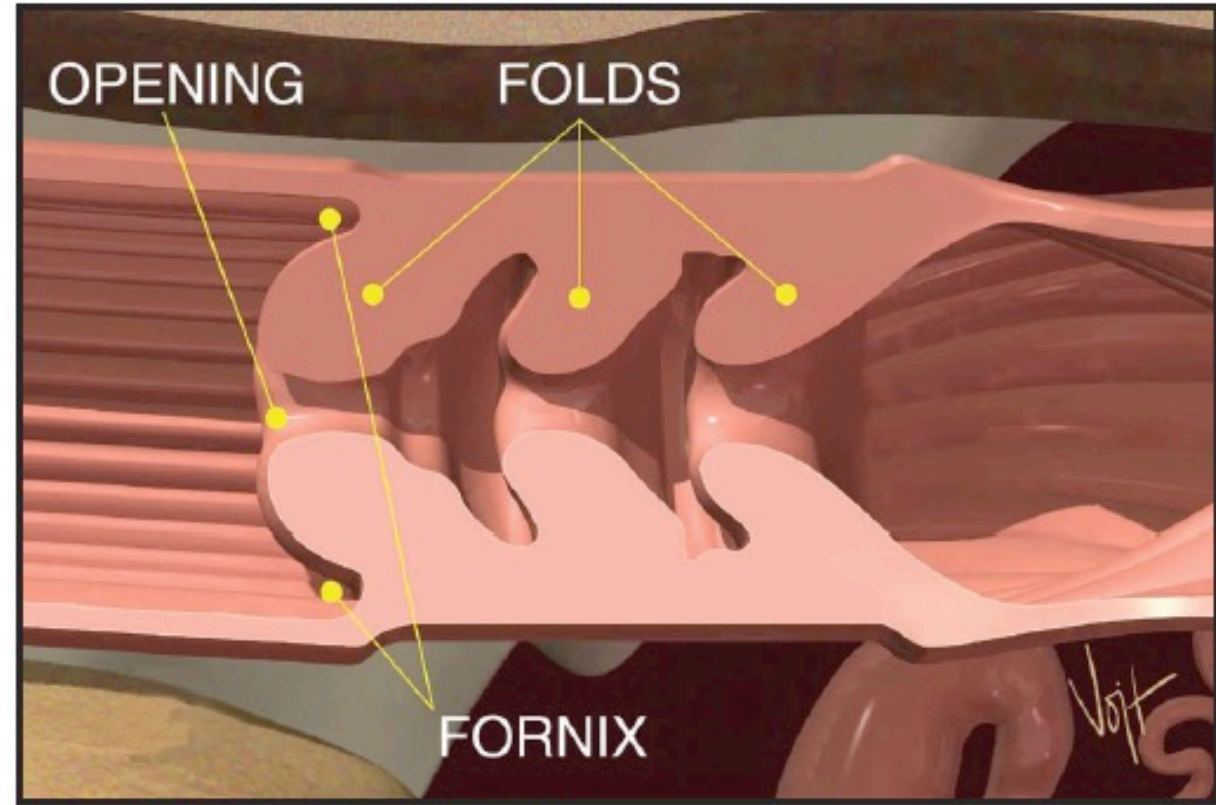
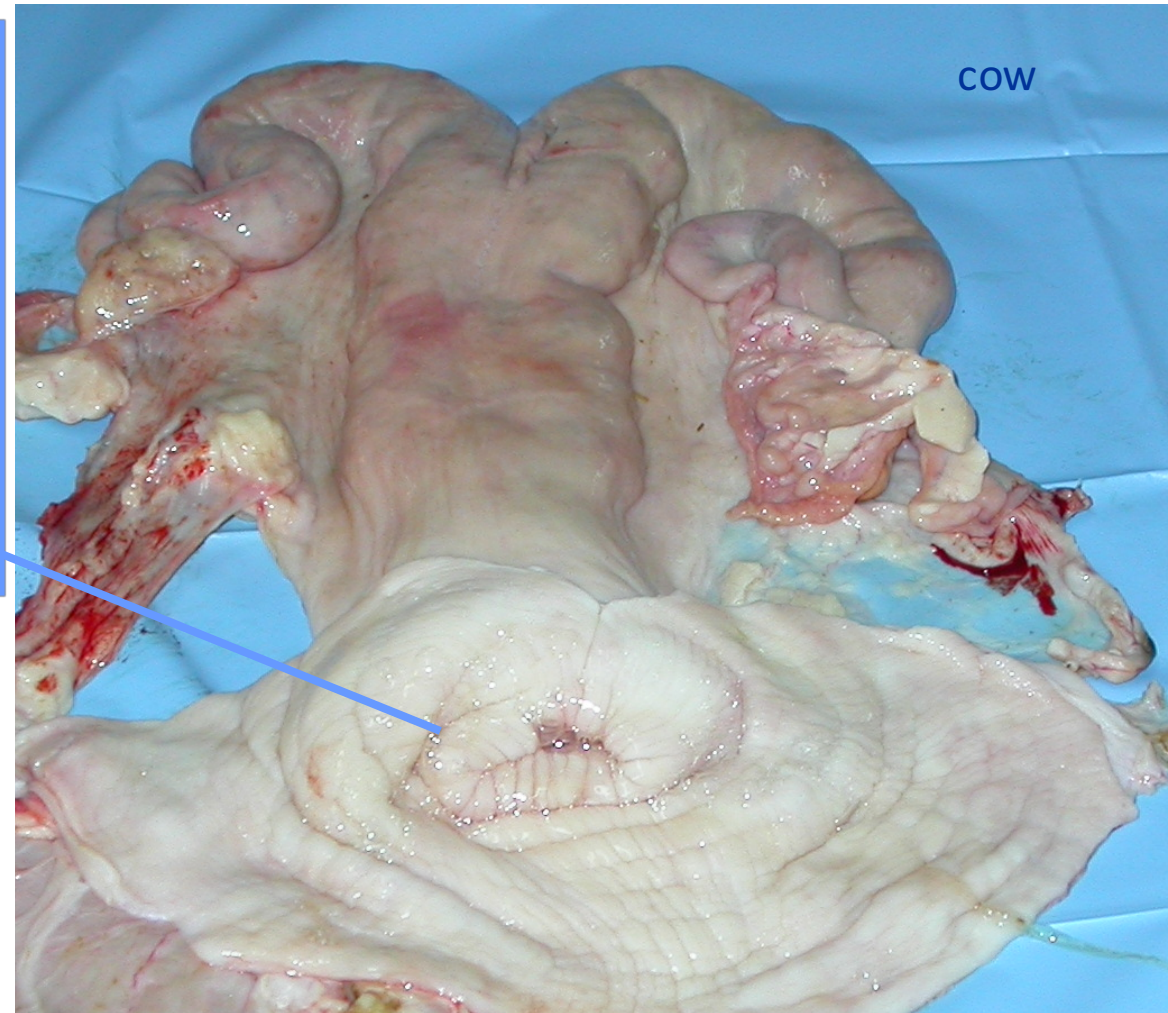
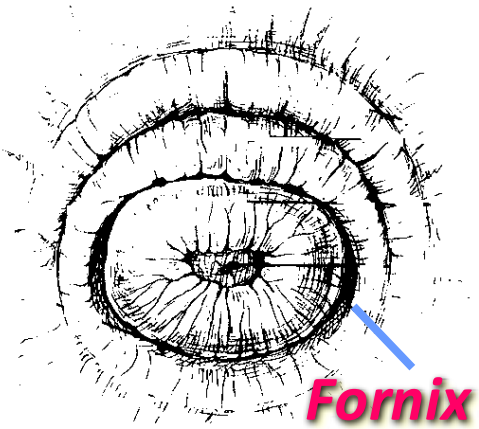
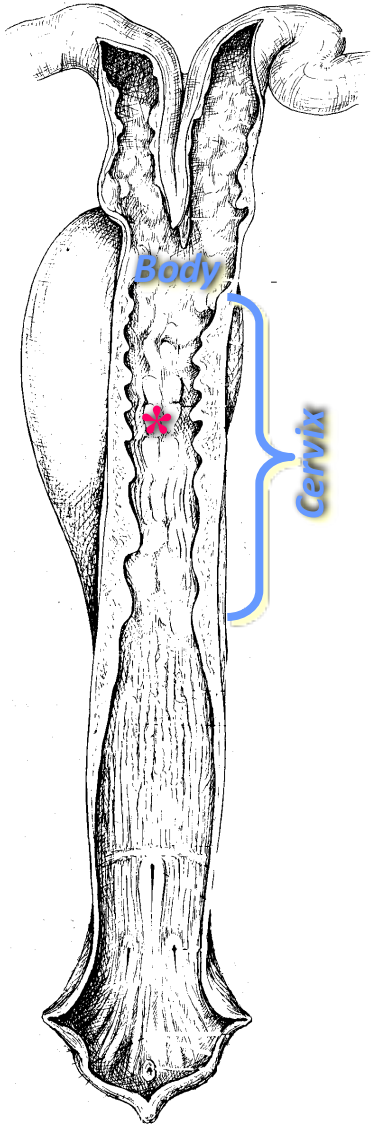


Figure 2. Close-up view of the cervix.

# Cervix: cow



## Cervix: sow



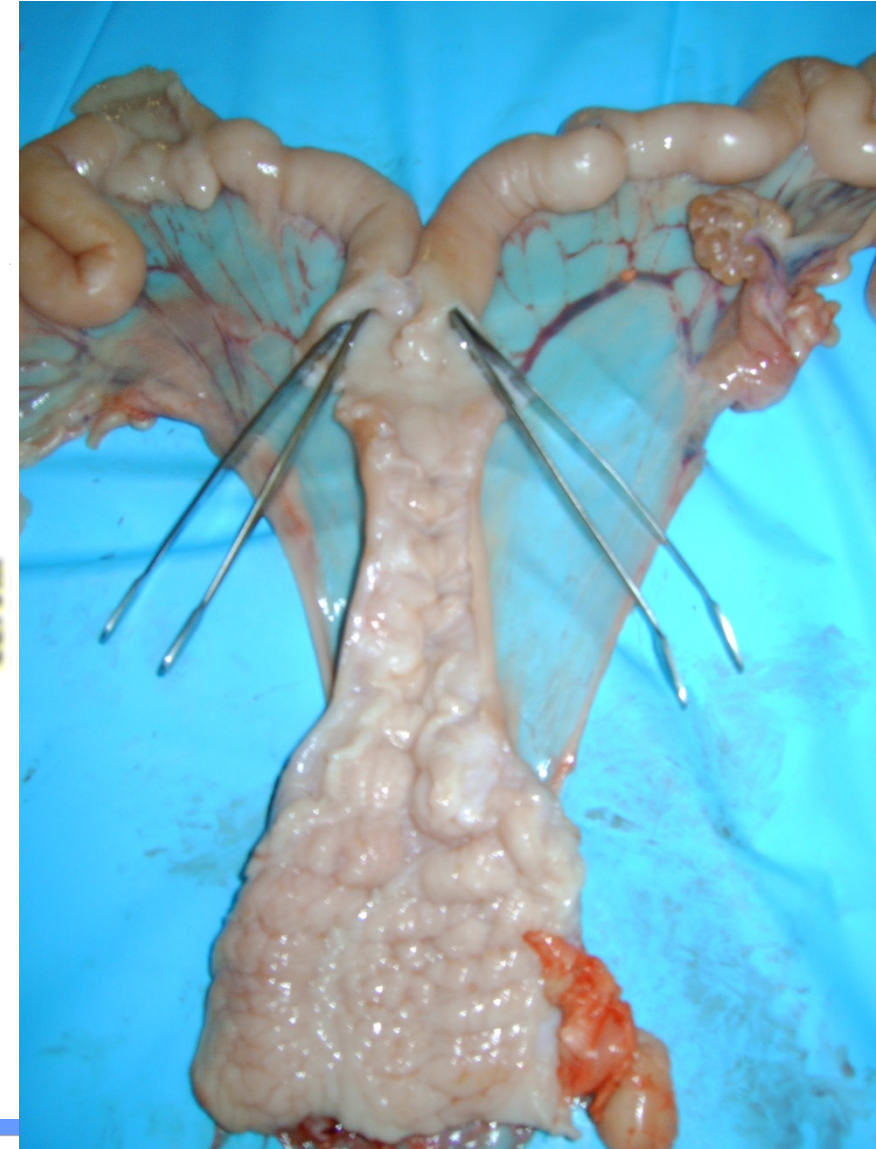
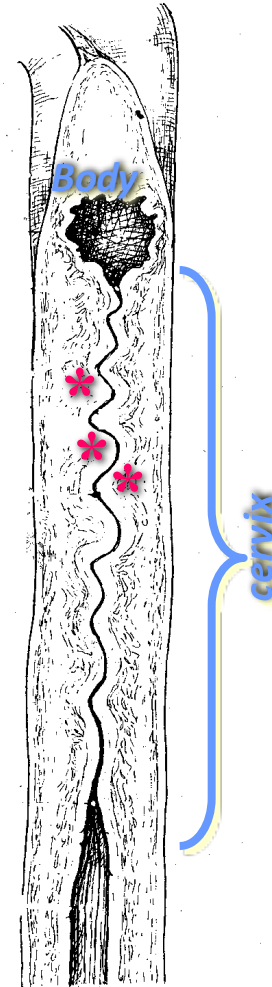
The **body** is very small (few cm).

The **cervix** is very long (10 cm)  
And directly continuous into  
the vagina without forming  
the fornix.

Cervical folds form rings

**cervical rings\***

that interdigitate with each other  
to close the cervical canal.



## Some useful links

<https://www.youtube.com/watch?v=a8fgm-zEYjQ>

<https://www.youtube.com/watch?v=CNRDxjMlEoQ>