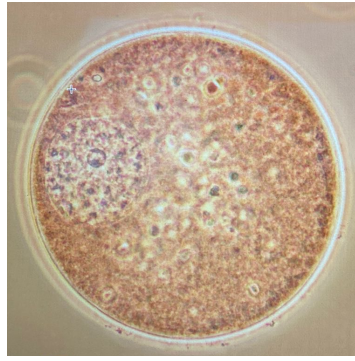
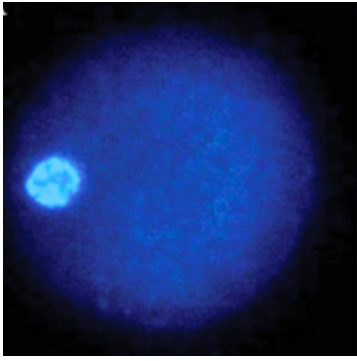


# **Nuclear stage classification**

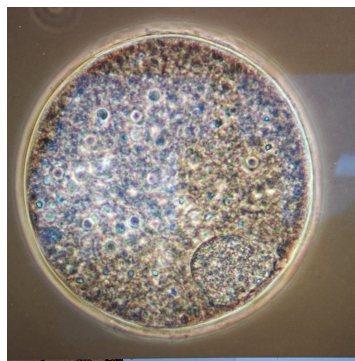
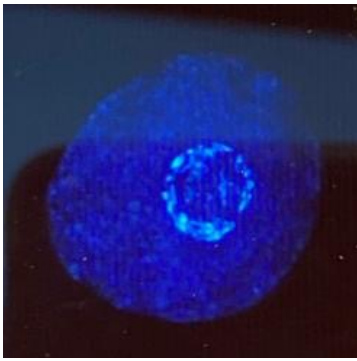
DAPI

LACMOID

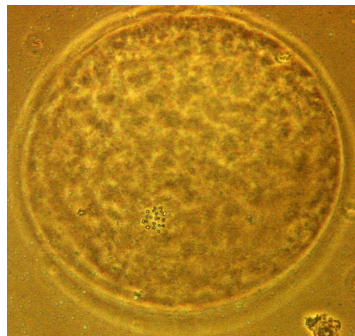
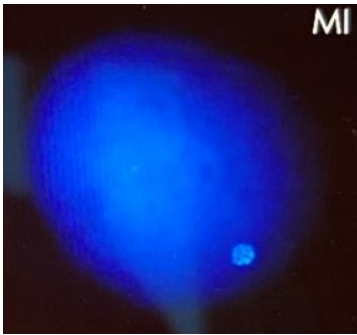
GV



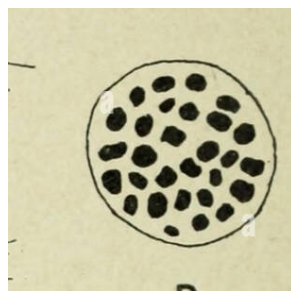
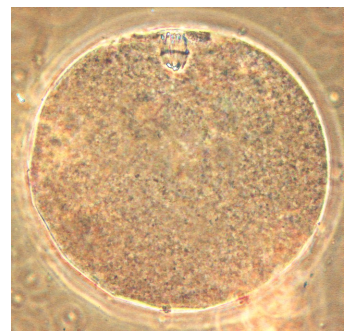
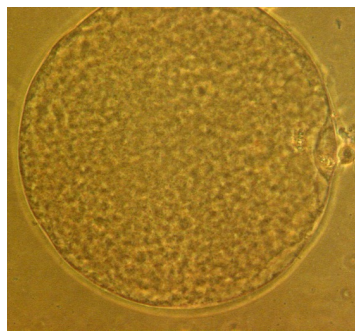
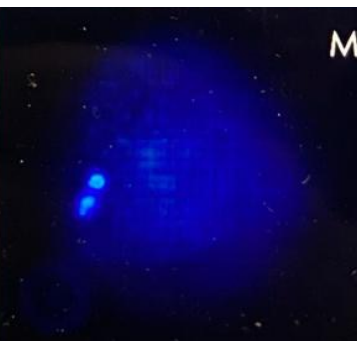
GVBD



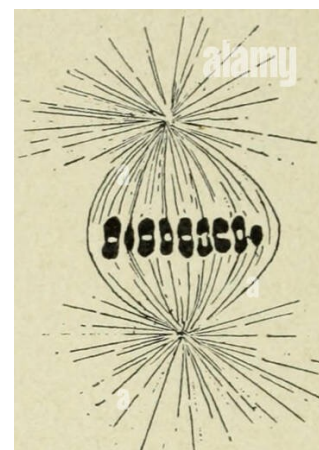
MI



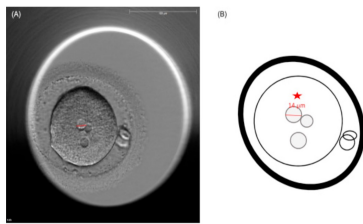
MII



Flat perspective

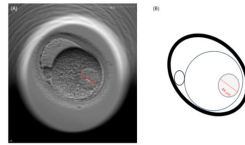


Longitudinal perspective



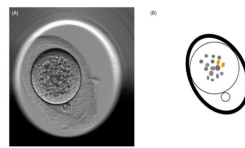
[Download full-size image](#)

Fig. 2. (A and B) Multiple vacuoles of various sizes, \*vacuole with 14µm diameter, large perivitelline space.



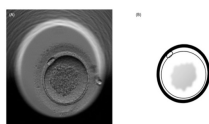
[Download full-size image](#)

Fig. 4. (A and B) Large vacuole with 44µm diameter, large perivitelline space.



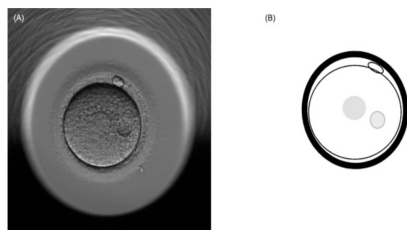
[Download full-size image](#)

Fig. 1. (A and B) Centrally located granulation and refractile bodies.



[Download full-size image](#)

Fig. 3. (A and B) Centrally located endoplasmic granulation.



[Download full-size image](#)

Fig. 6. (A and B) Smooth endoplasmic reticulum clusters.

## LOW QUALITY MII OOCYTES

- Optimal oocyte morphology is defined as an oocyte with spherical structure enclosed by a uniform ZP, with a uniform translucent cytoplasm free of inclusions and a size-appropriate polar body (Alpha Scientists in Reproductive Medicine and ESHRE Special Interest Group of Embryology, 2011).

- These are examples of Metaphase II-stage (MII) oocytes with morphological variations that may affect the developmental competence and implantation potential of the derived embryo.