

EQUINE COLIC /ACUTE ABDOMINAL PAIN

DEFINITION

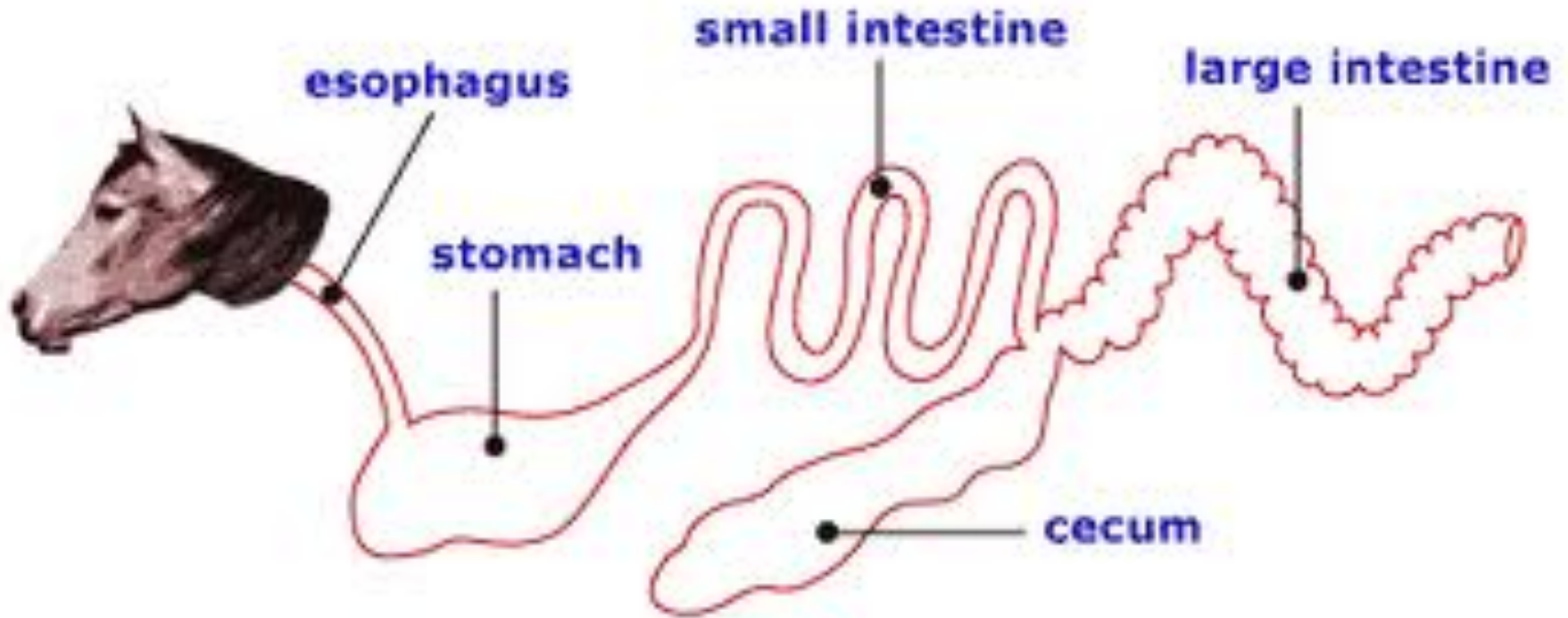
*Colic is defined as abdominal pain;
specifically pain from spasm of the colon.*

*In the horse the term is used to define a symptom
commonly resulting from intestinal ileus or
inflammation.*

COLIC IS ONE OF THE MOST COMMON EMRGENCIES
FACED BY VETERINARIANS

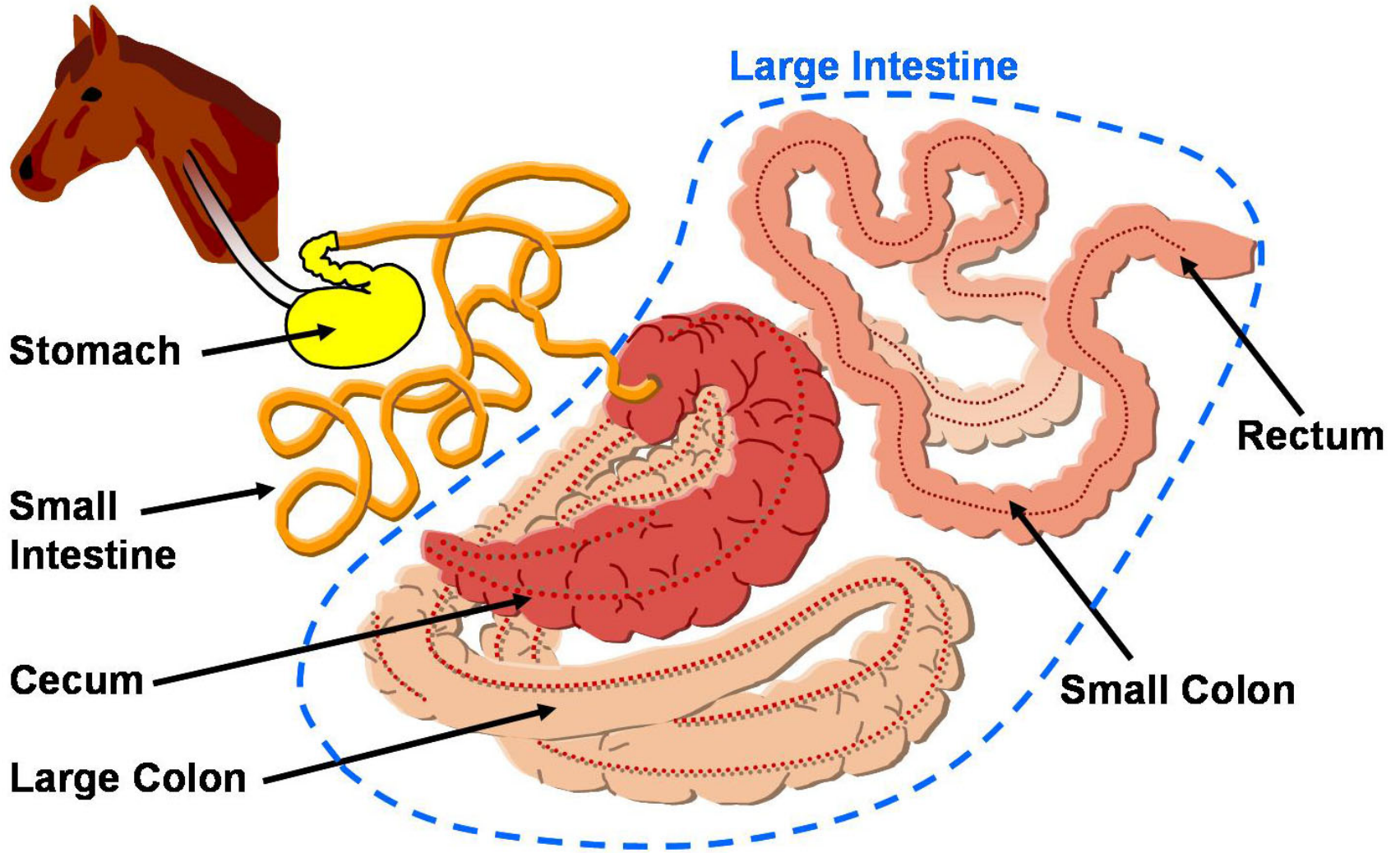
It can be a life-threatening emergency

ANATOMY of the EQUINE GASTROINTESTINAL TRACT



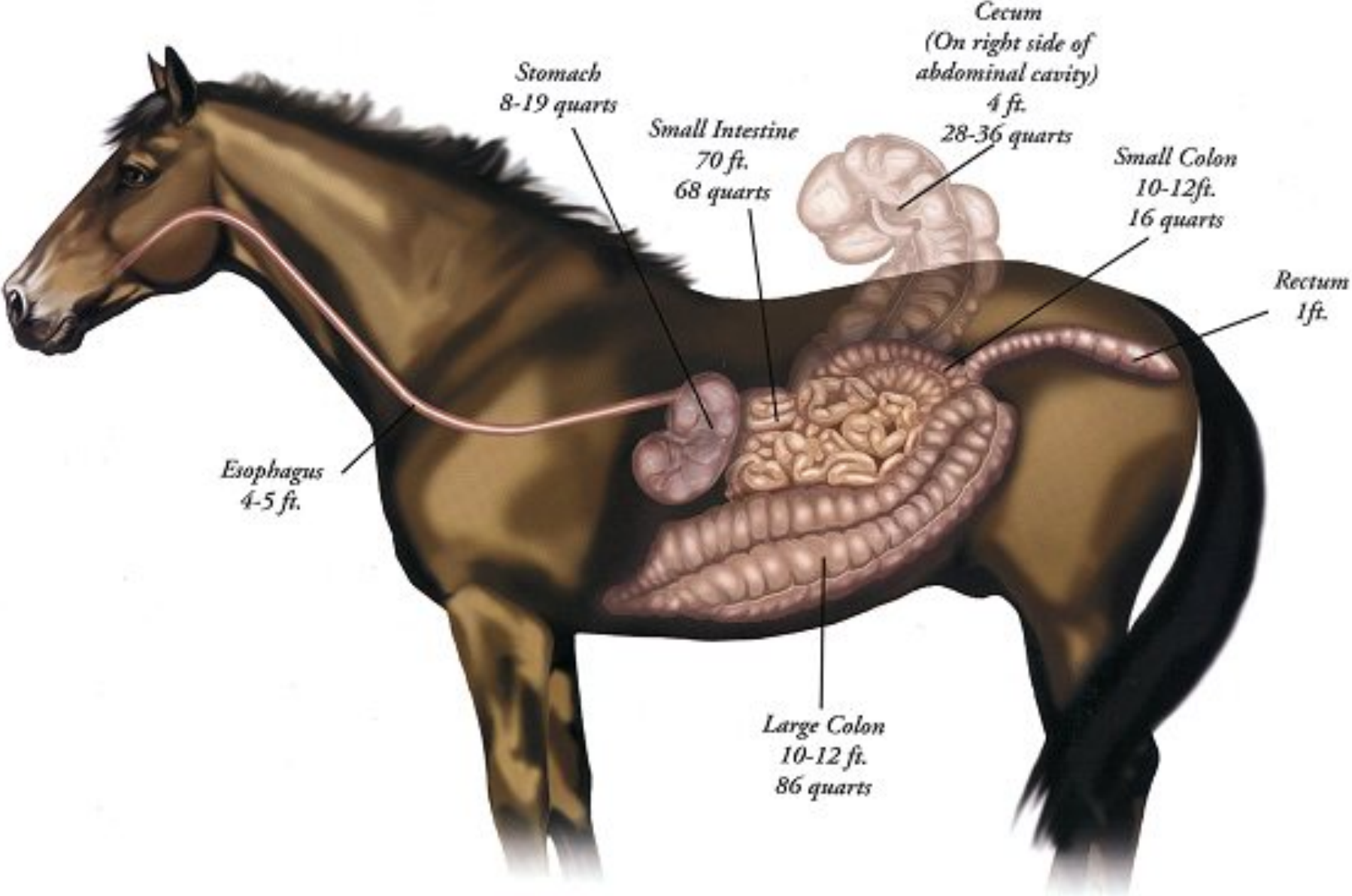
Primary school level

ANATOMY of the EQUINE GASTROINTESTINAL TRACT



Primary school level

ANATOMY of the EQUINE GASTROINTESTINAL TRACT

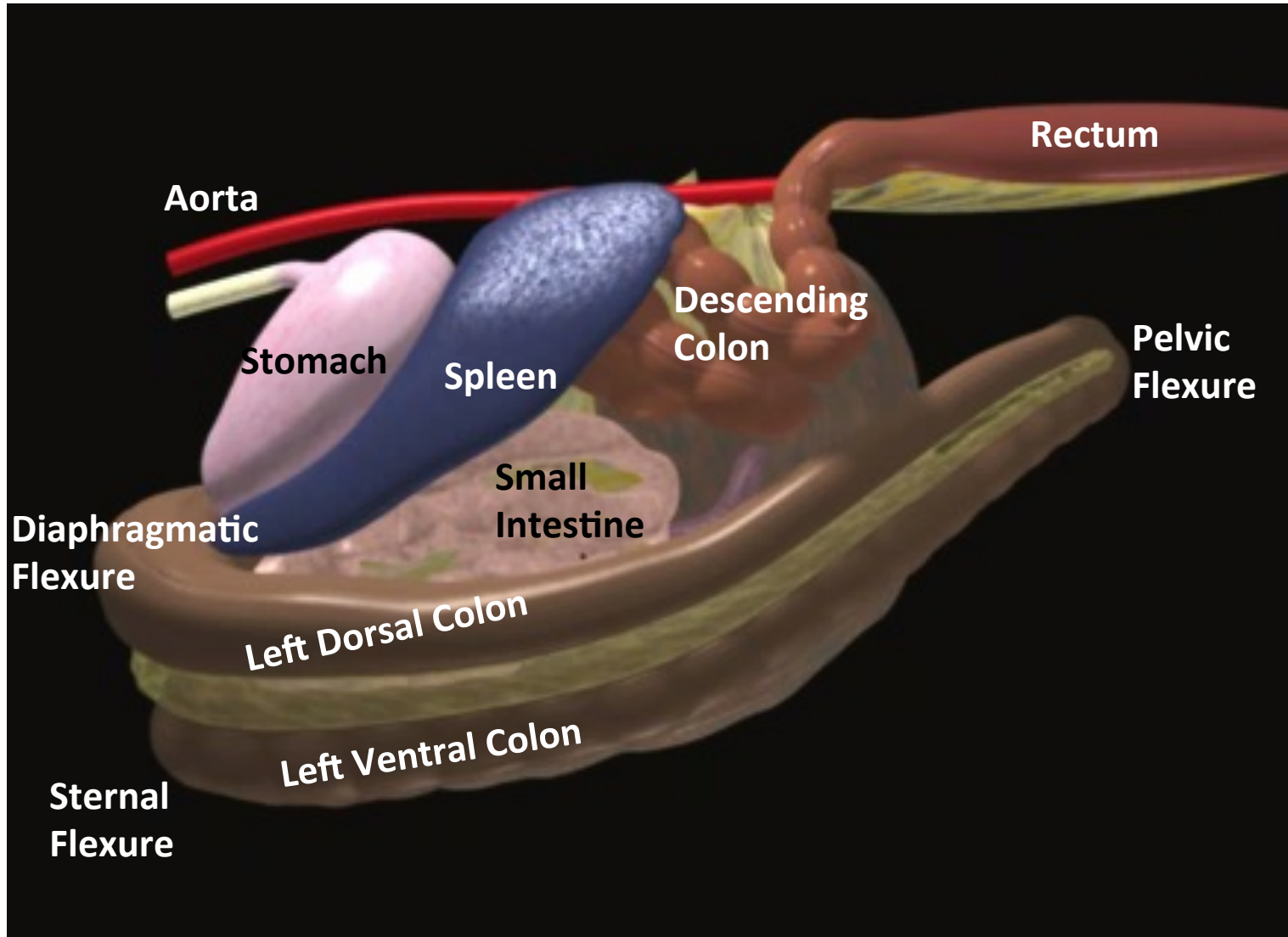


Secondary school level

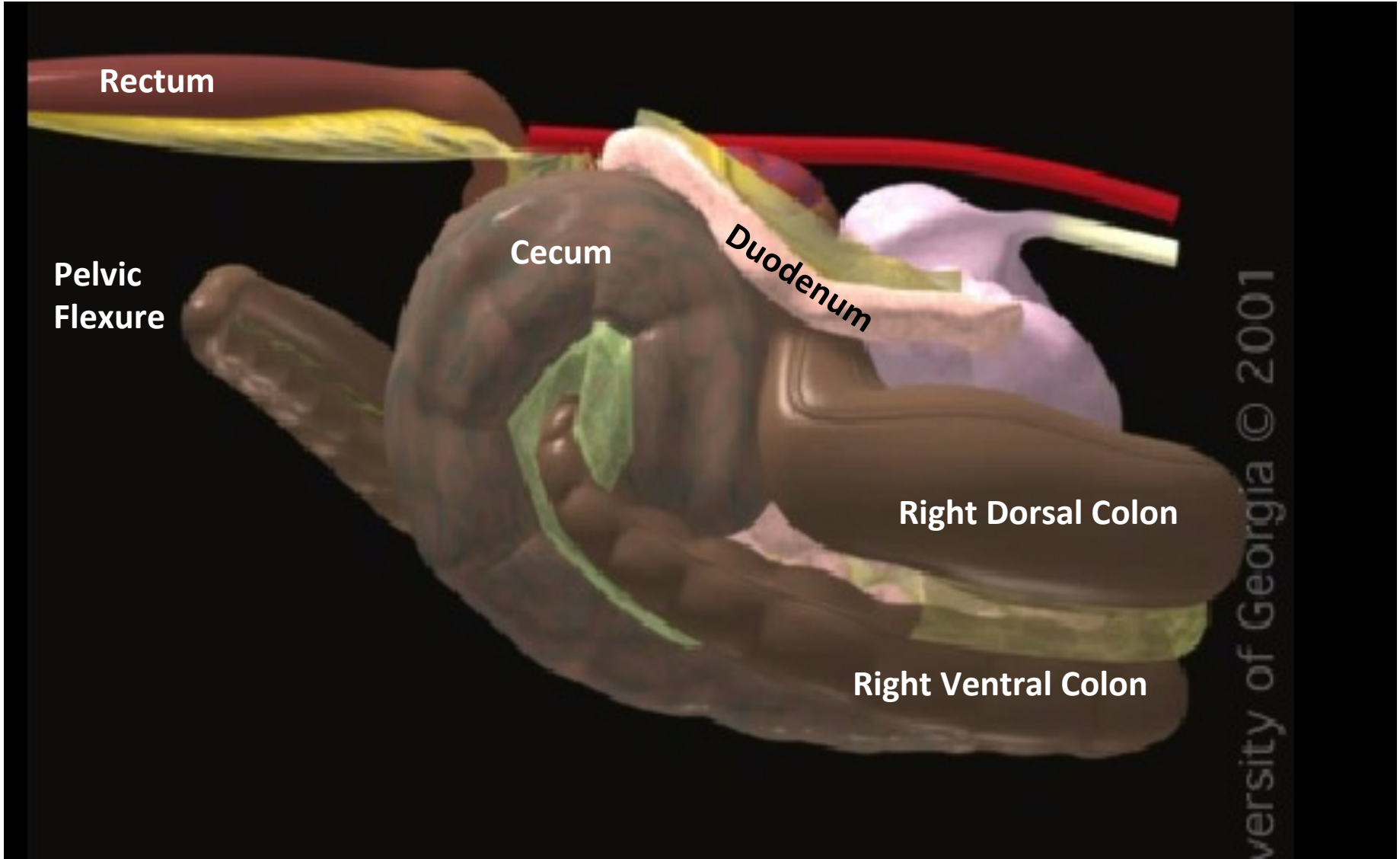
EQUINE GASTROINTESTINAL TRACT ANATOMY

C
O
L
L
E
G
E

L
E
V
E
L

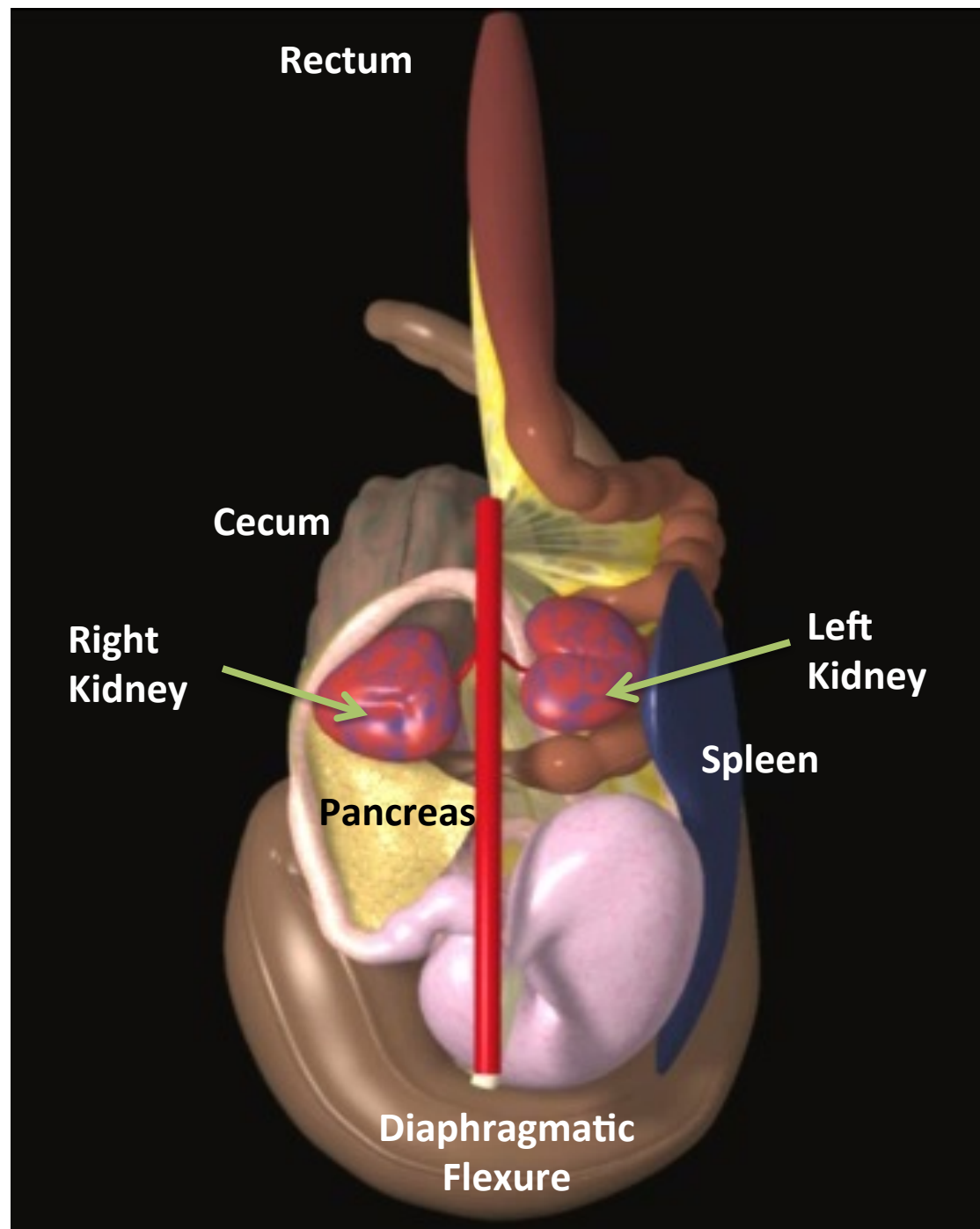


GASTROINTESTINAL TRACT LEFT SIDE WITHOUT RIB CAGE

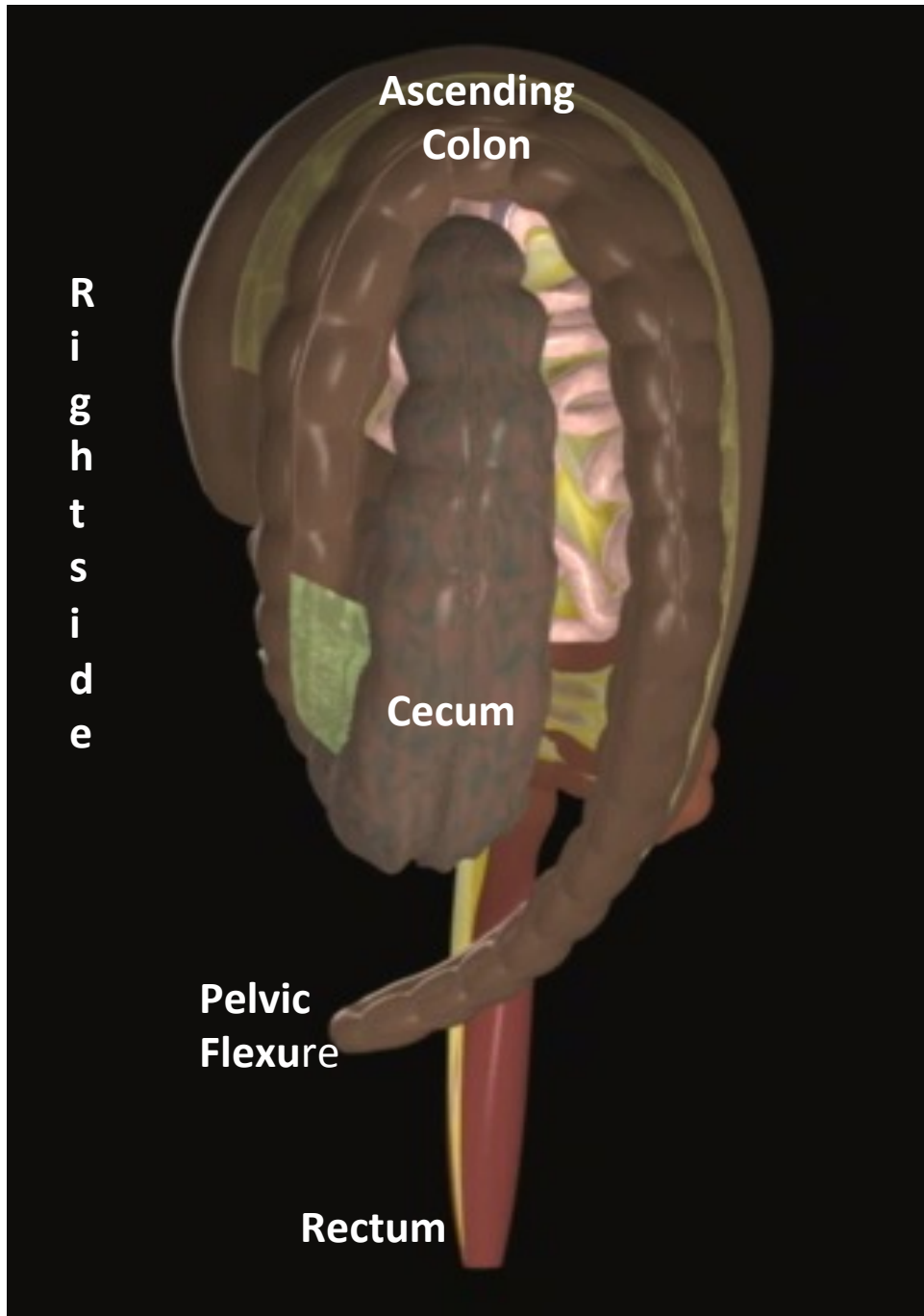


GASTROINTESTINAL TRACT RIGHT SIDE WITHOUT RIB CAGE

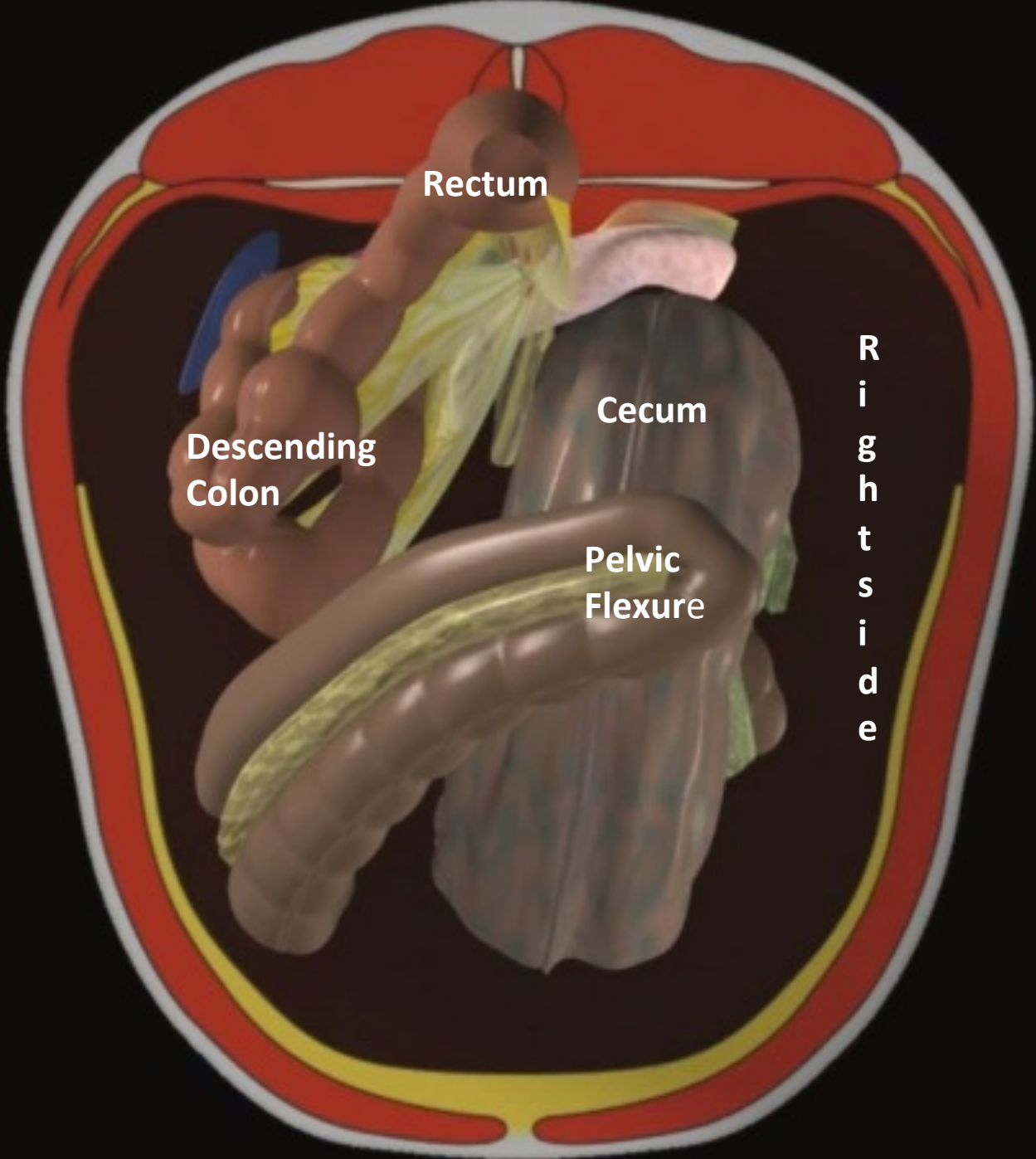
**D
o
r
s
a
l
v
i
e
w**



V
e
n
t
r
a
l
v
i
e
w



**R
e
c
t
a
l
v
i
e
w**



Rectum

**Descending
Colon**

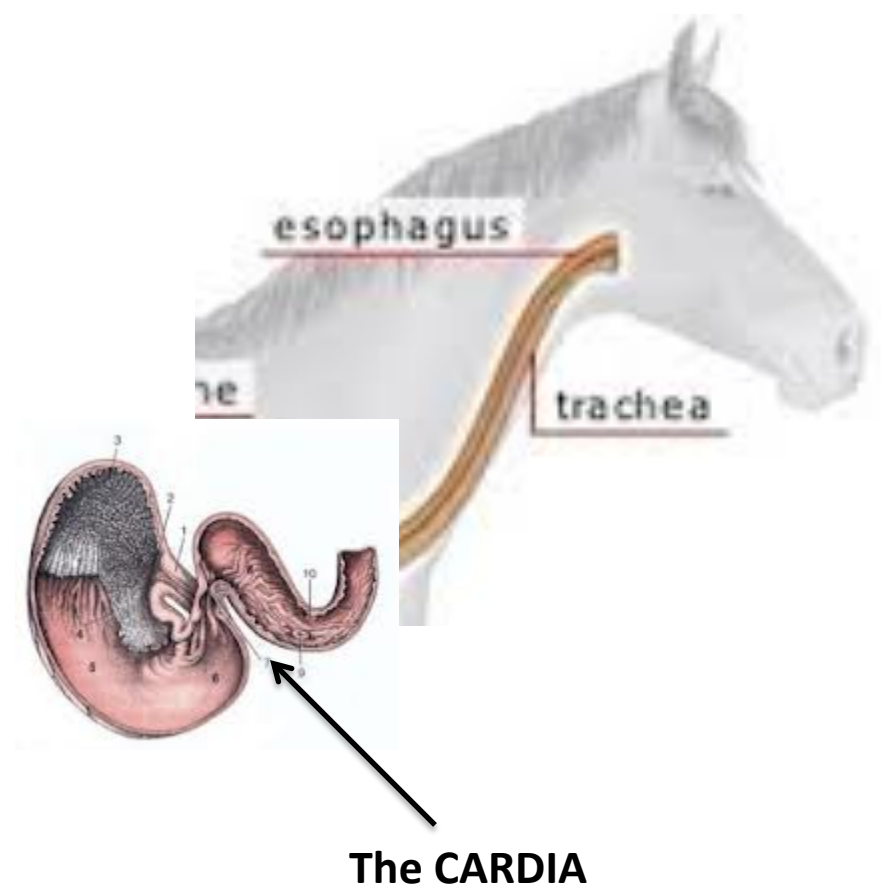
Cecum

**Pelvic
Flexure**

**R
i
g
h
t
s
i
d
e**

Esophagus

- Three portion
 - Cervical
 - Thoracical
 - Abdominal



The combination of the **muscular sphincter** and the **oblique angle** by which the distal end of the esophagus joins the cardia of the stomach makes it virtually **impossible to horse to vomit.**

Stomach

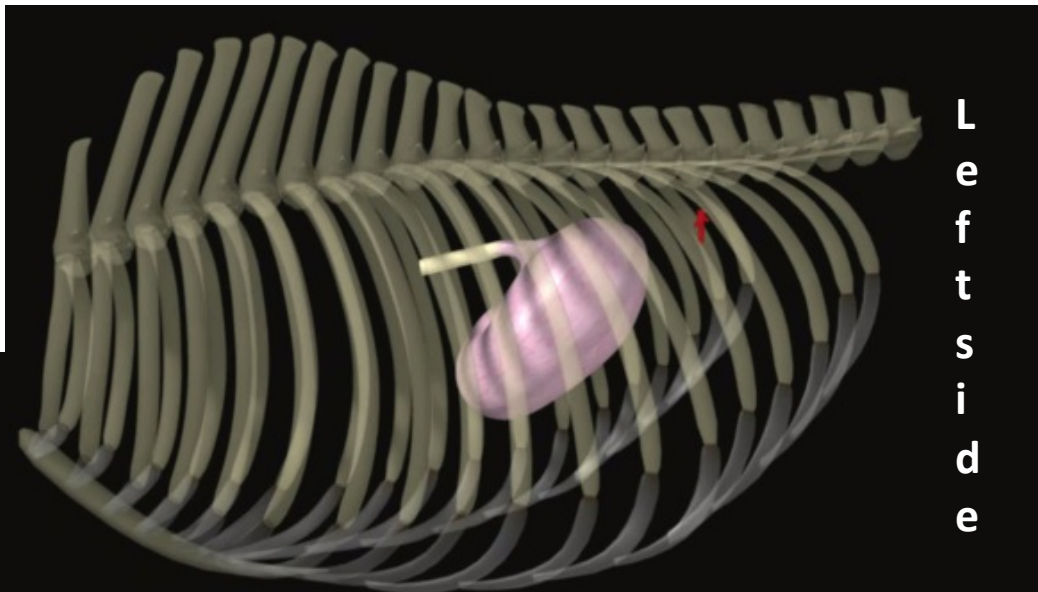
Capacity 10 to 15 Lt

CARDIA

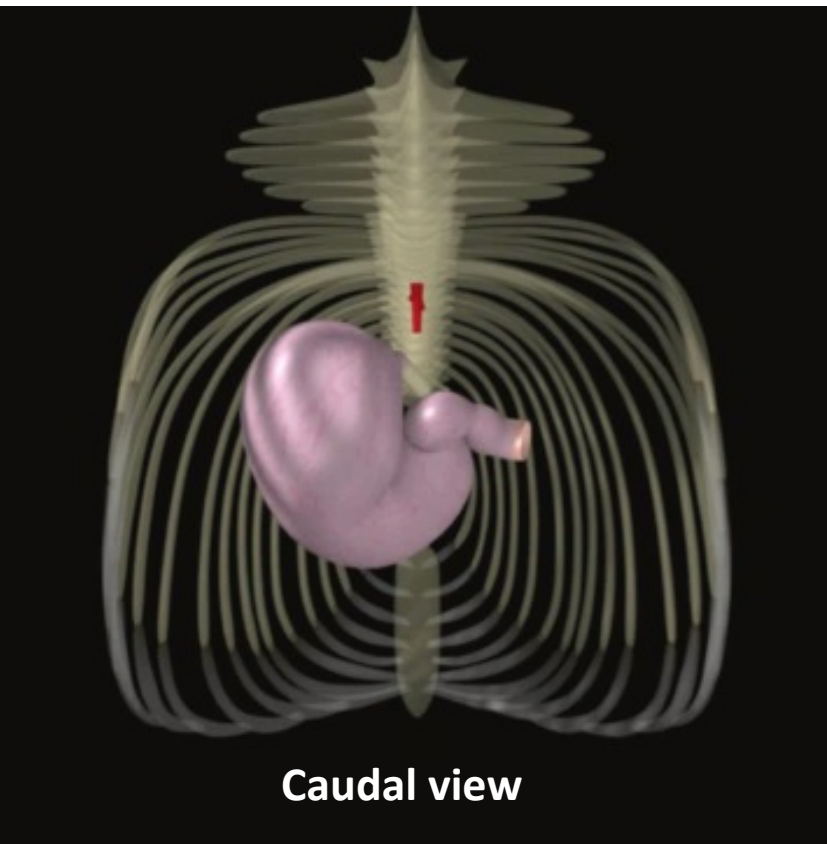
FUNDUS

BODY

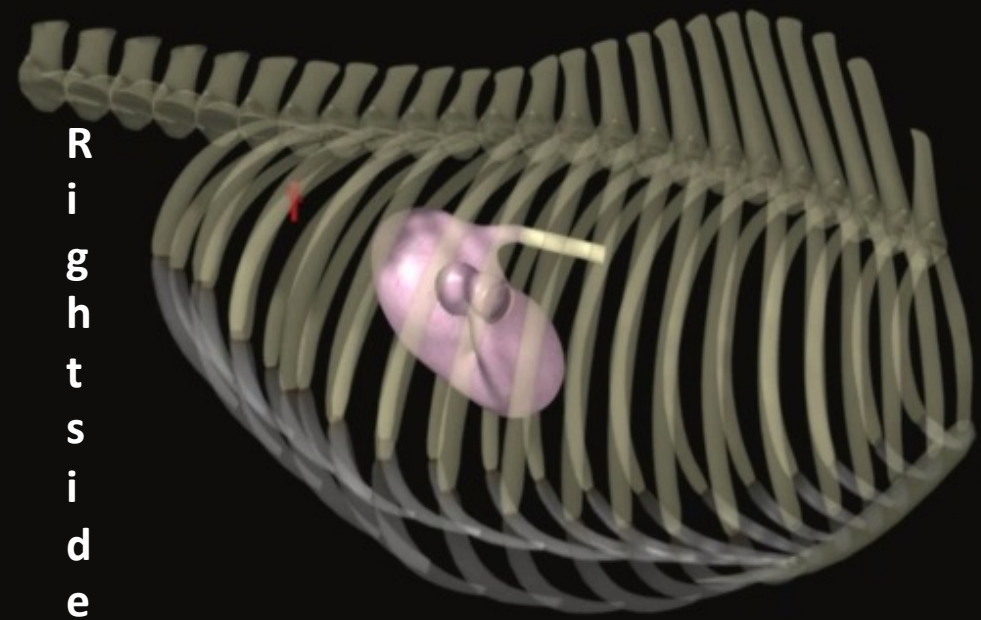
PYLORIC REGION



L
e
f
t
s
i
d
e



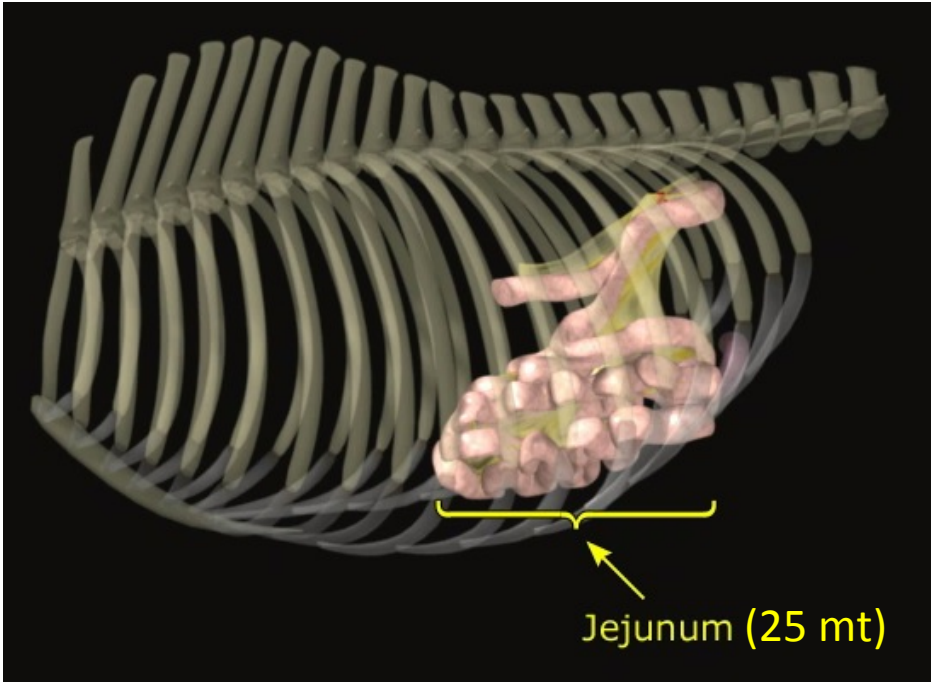
Caudal view



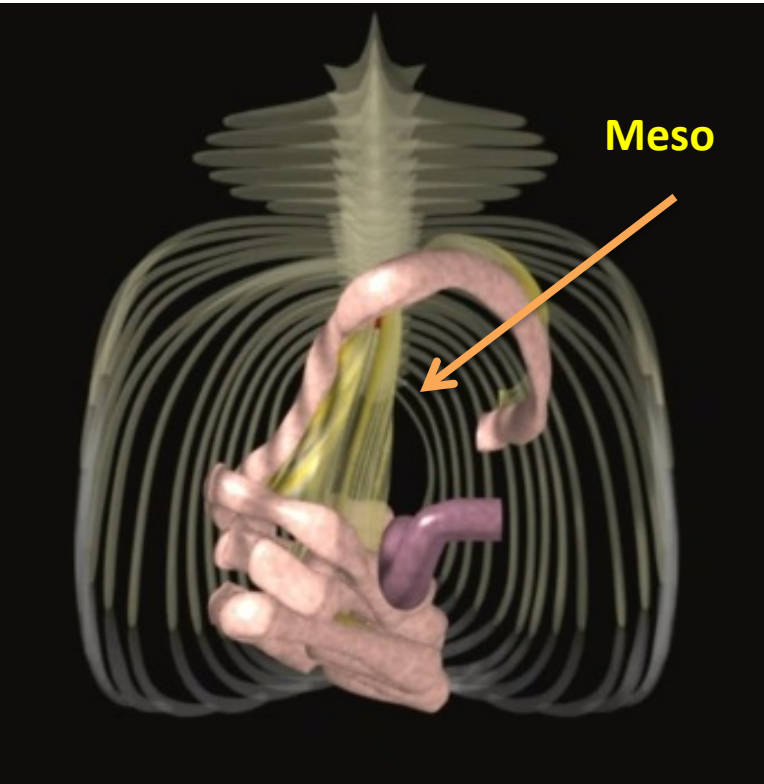
R
i
g
h
t
s
i
d
e

Small intestine

SX

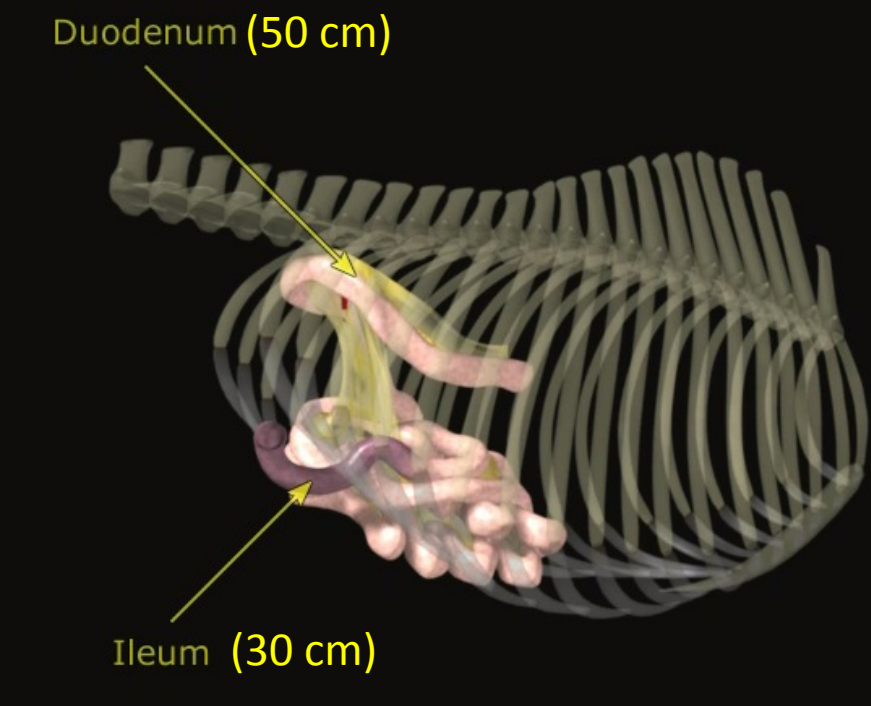


Meso



CAUDAL

Duodenum (50 cm)



DX

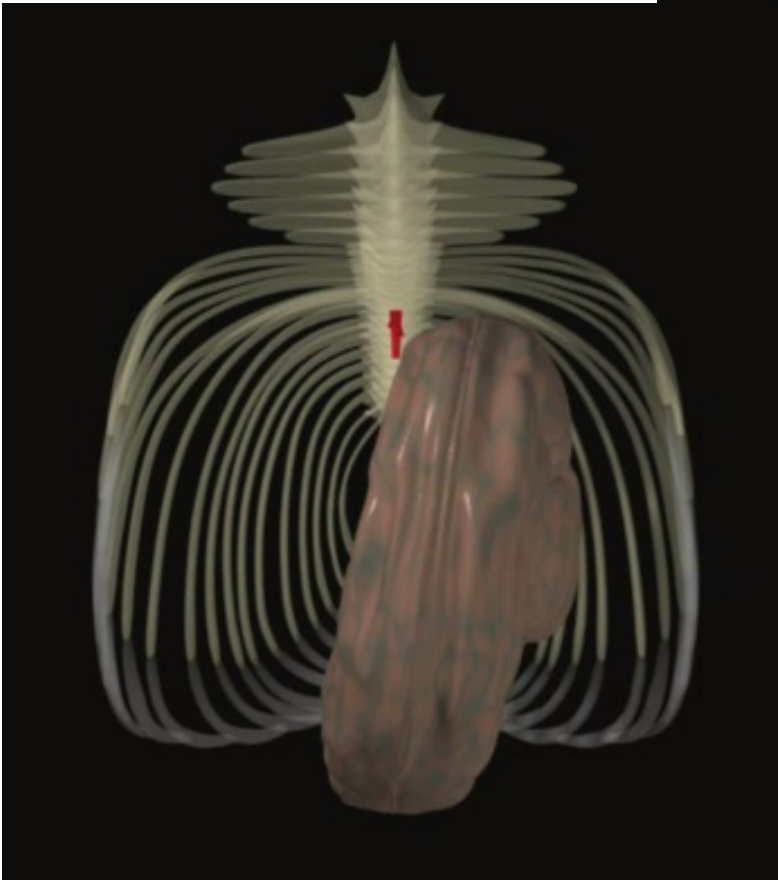
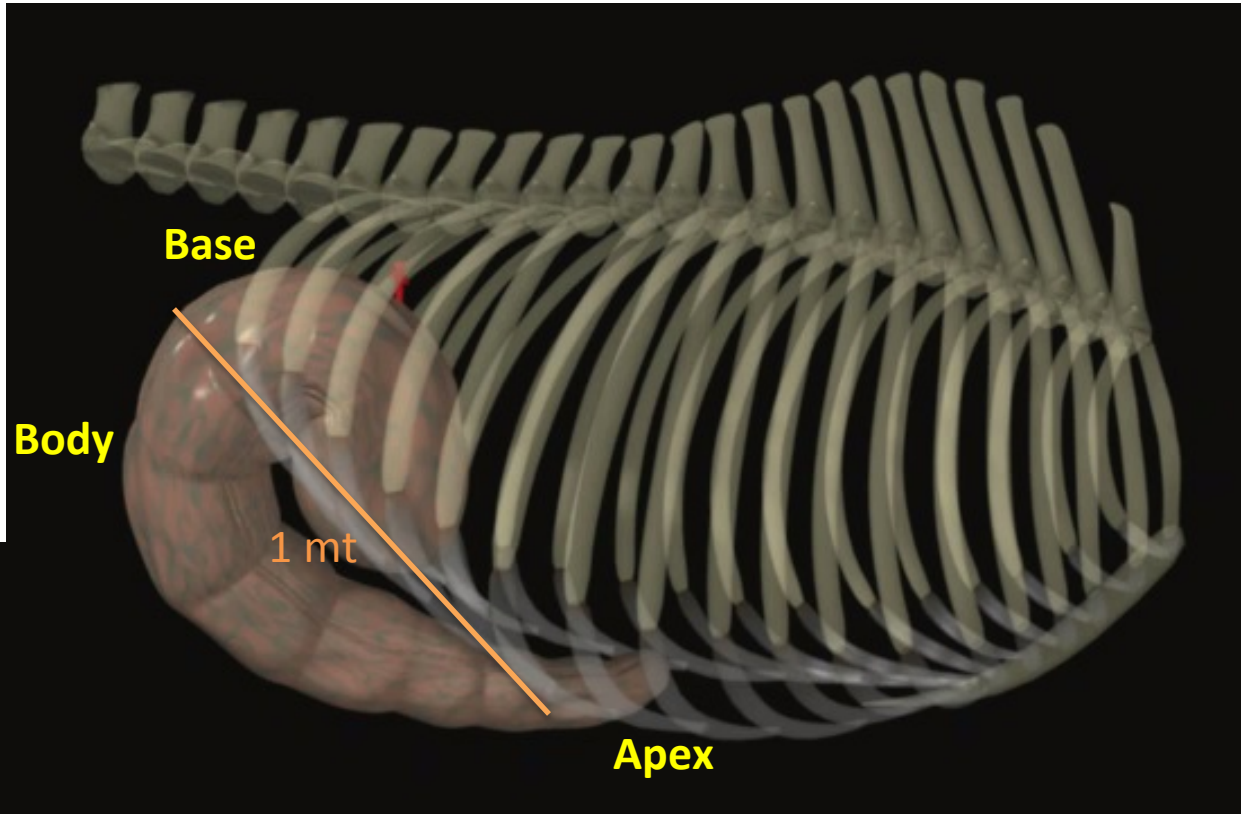
Ileum (30 cm)

Cecum

Fermentation chamber
40 Lt. capacity

CAUDAL

DX

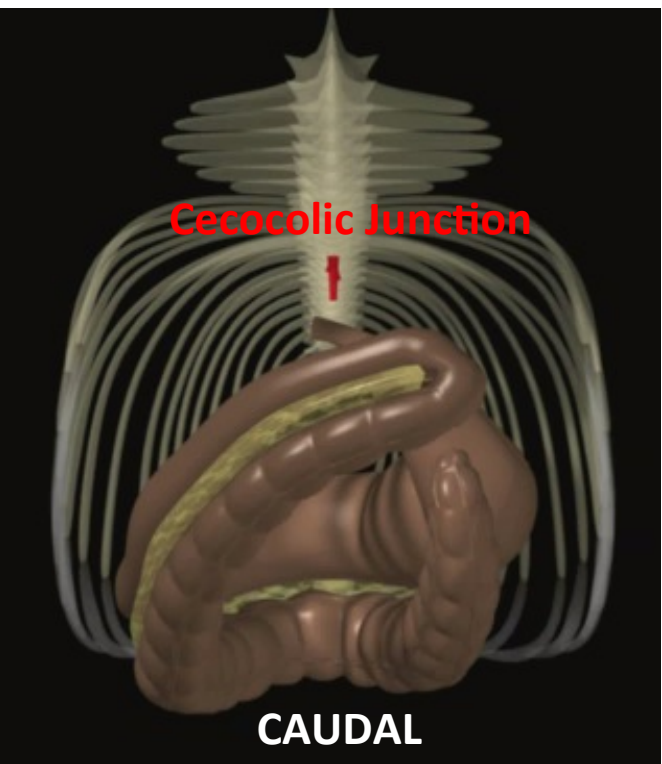
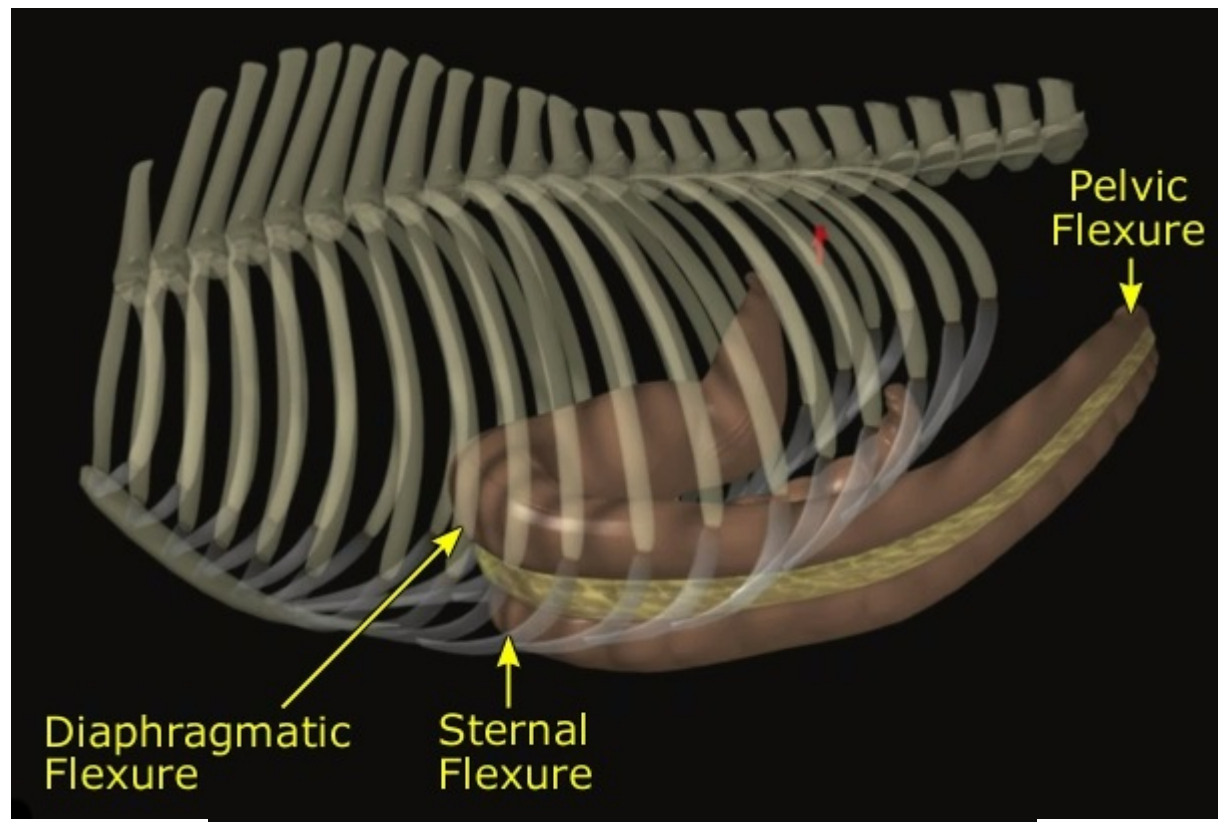


Ascending Colon

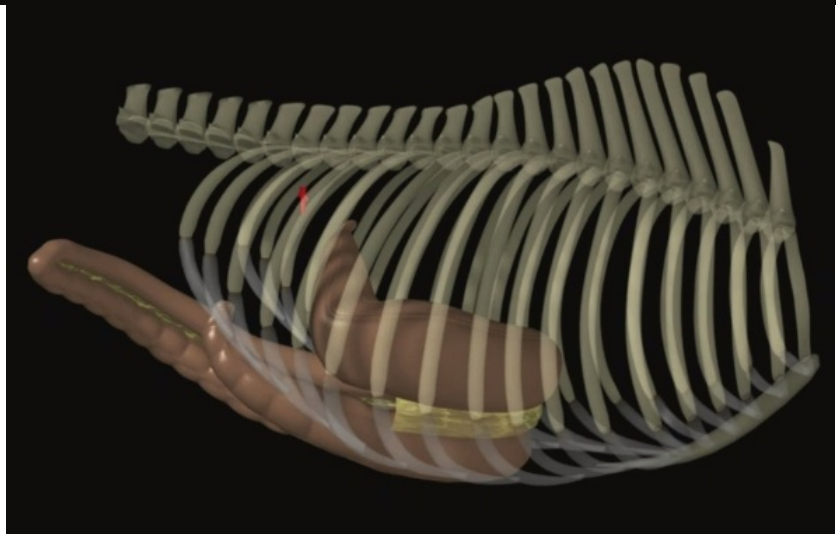
100 Lt. Capacity

- CECOCOLIC JUNCTION
- RIGHT VENTRAL COLON
- STERNAL FLEXURE
- LEFT VENTRAL COLON
- PELVIC FLEXURE
- LEFT DORSAL COLON
- DIAPHRAGMATIC FLEXURE
- RIGHT DORSAL COLON

SX



DX

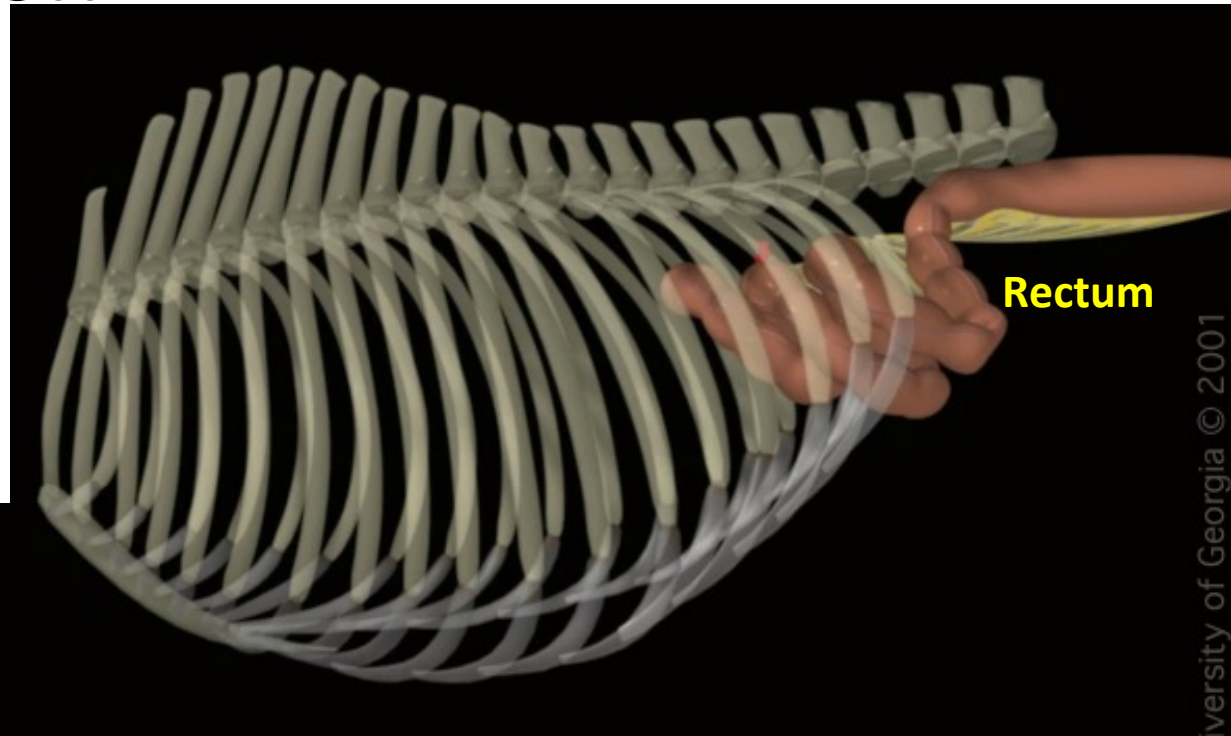


Descending Colon

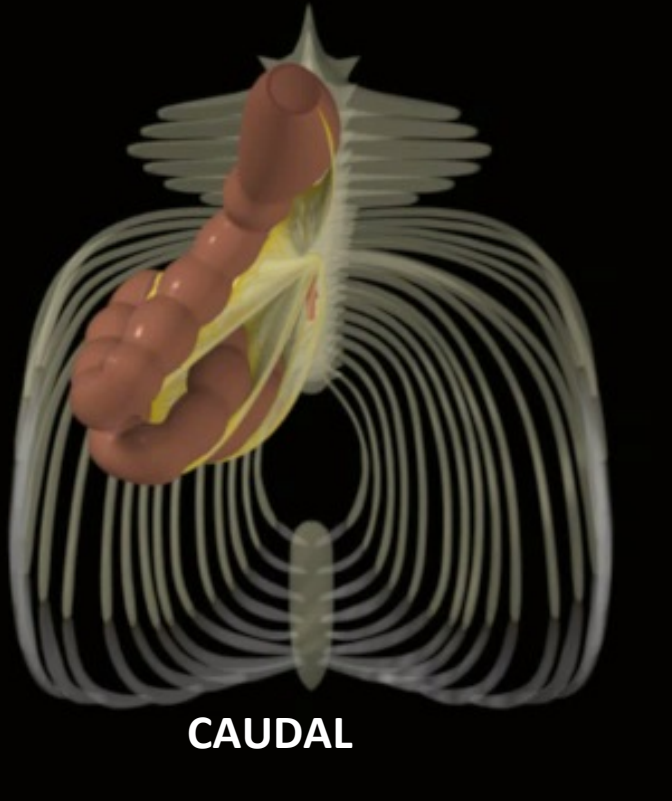
3-4 mt.

Rectum 25 cm

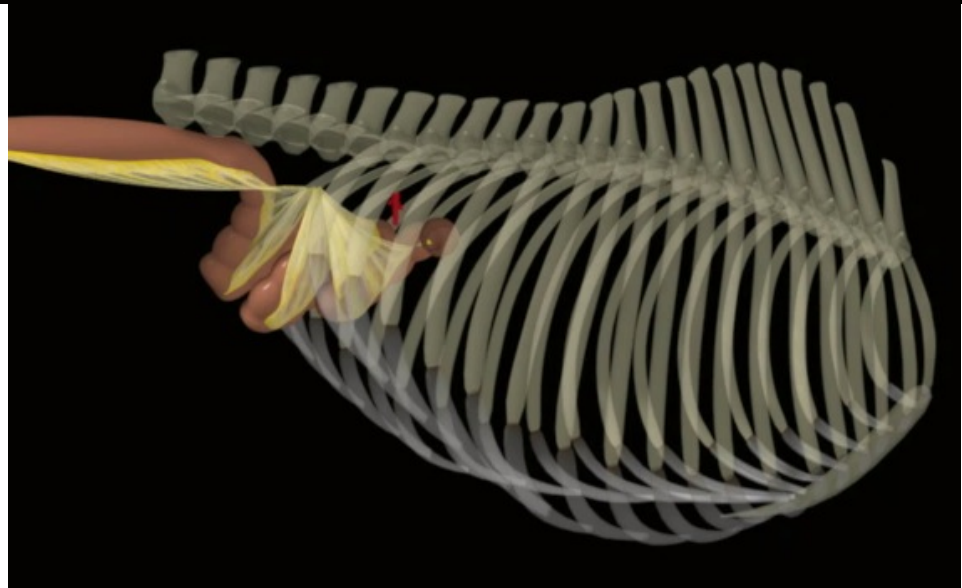
SX



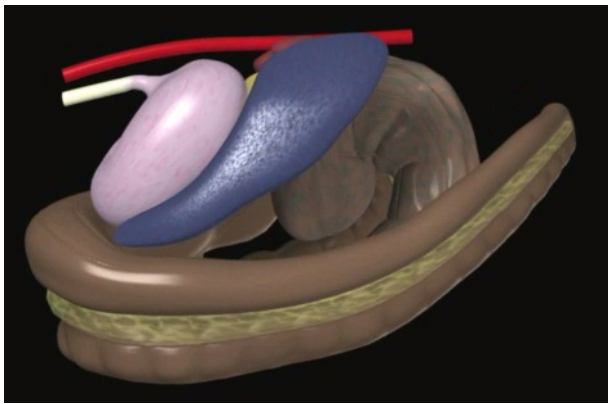
CAUDAL



D
X

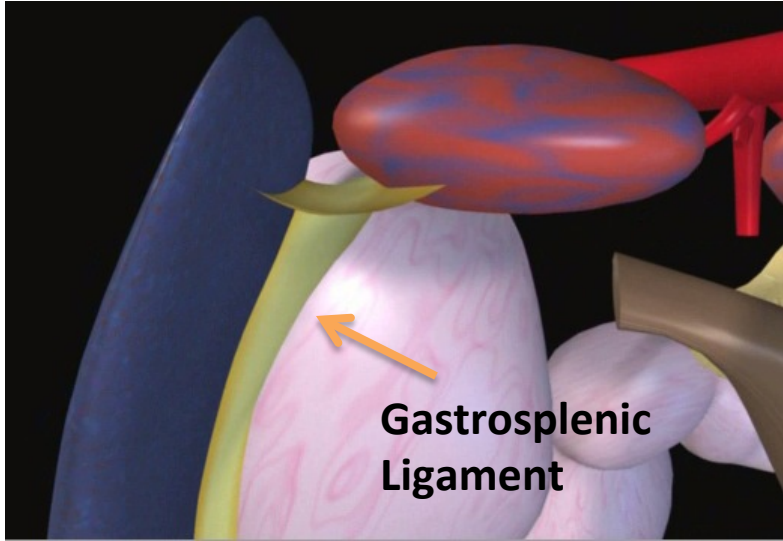
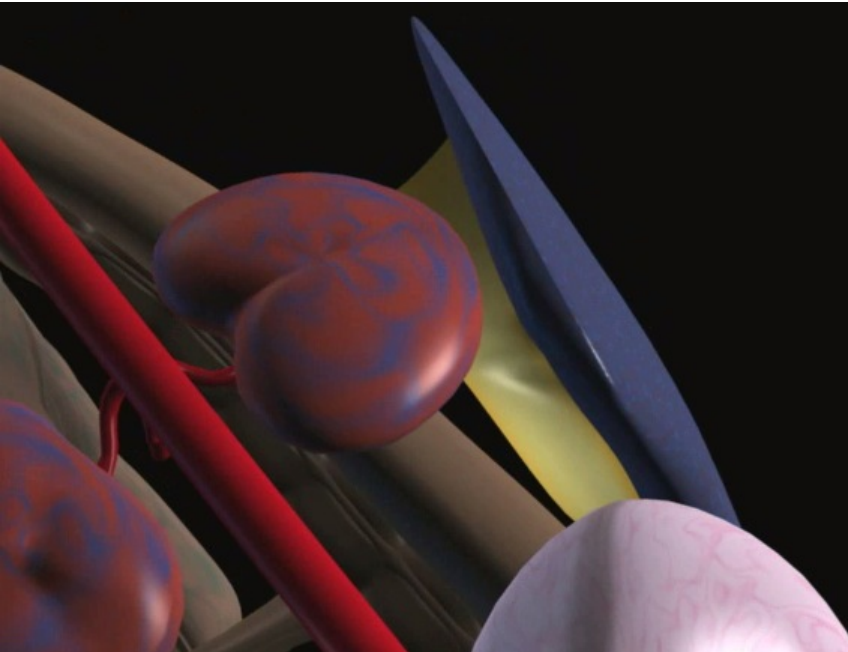
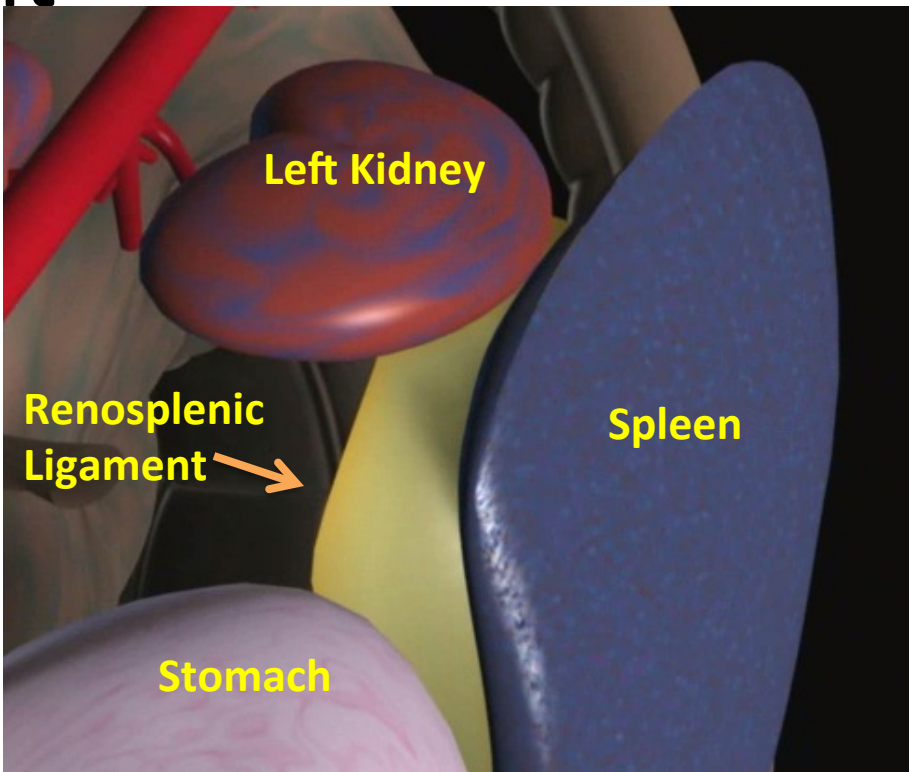


Renosplenic Ligament



DORSAL

S
X



C
A
U
D
A
L

END OF ANATOMY

SEMIOLOGIA ADOME ACUTO

CLASSIFICAZIONI

VISITA

ITER DIAGNOSTICO

MANUALITA'

**PATOLOGIA speciale(principali patologie,
sintomi e patogenesi)**