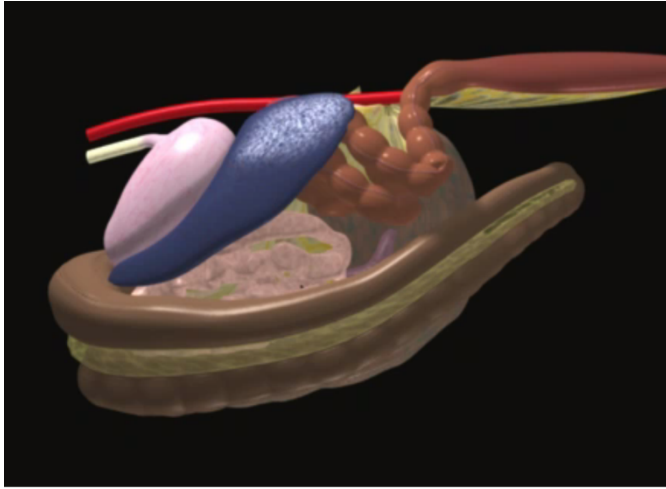


SPECIFIC COLIC CONDITION

ILEAL IMPACTION

NORMAL

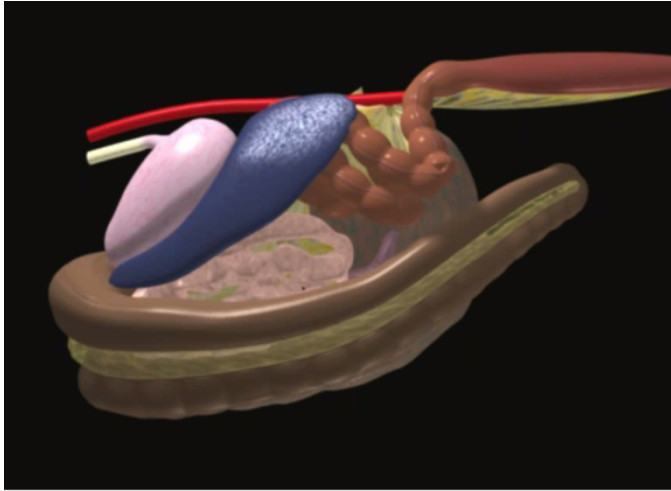


STEP 1

STEP 2



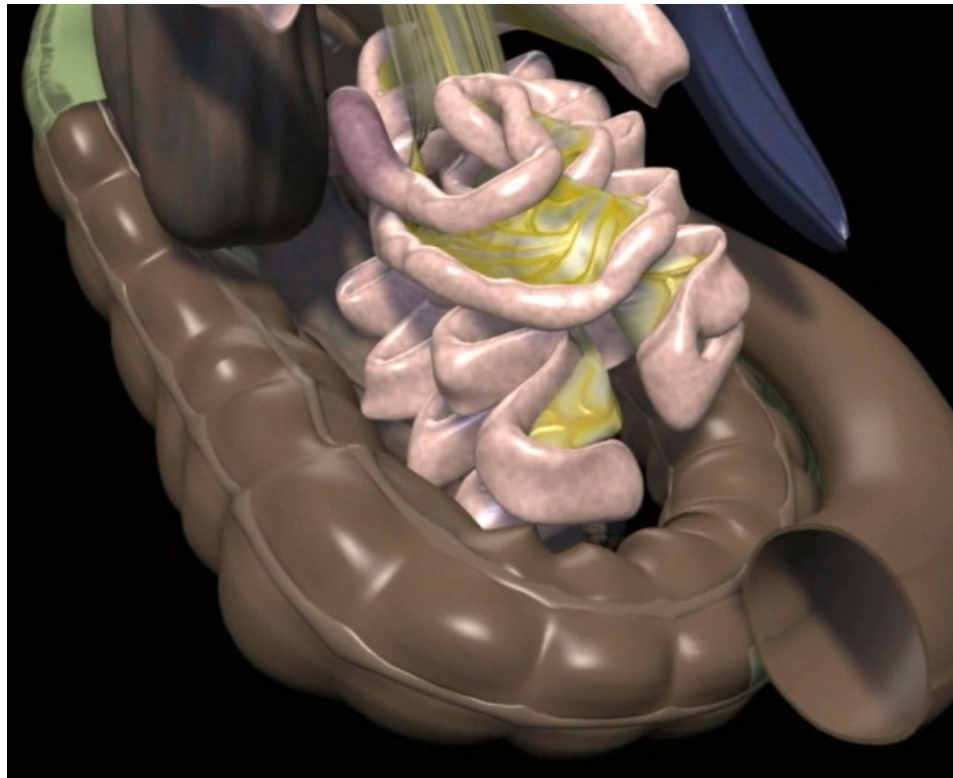
PROXIMAL ENTERITIS



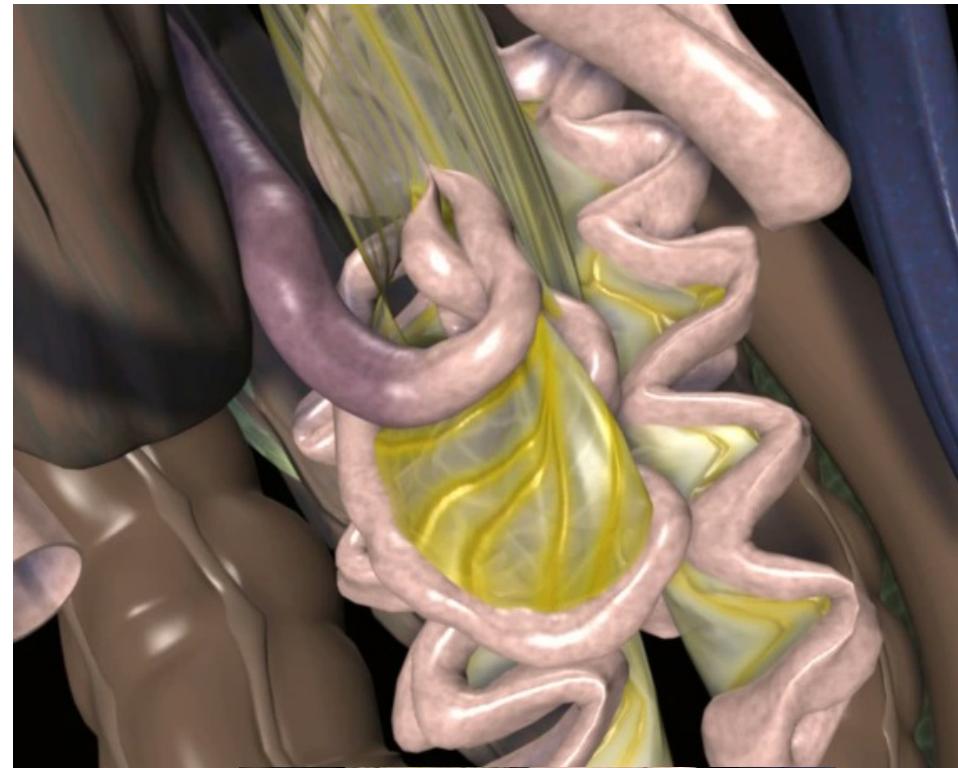
NORMAL



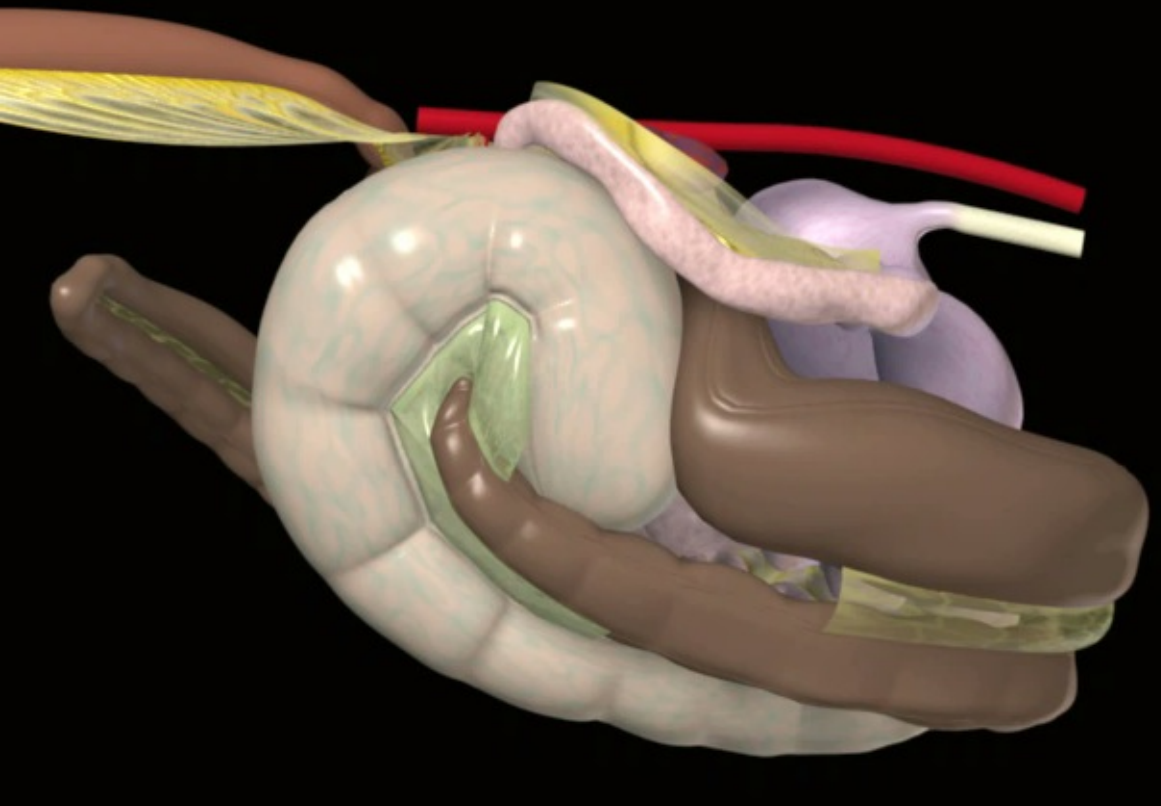
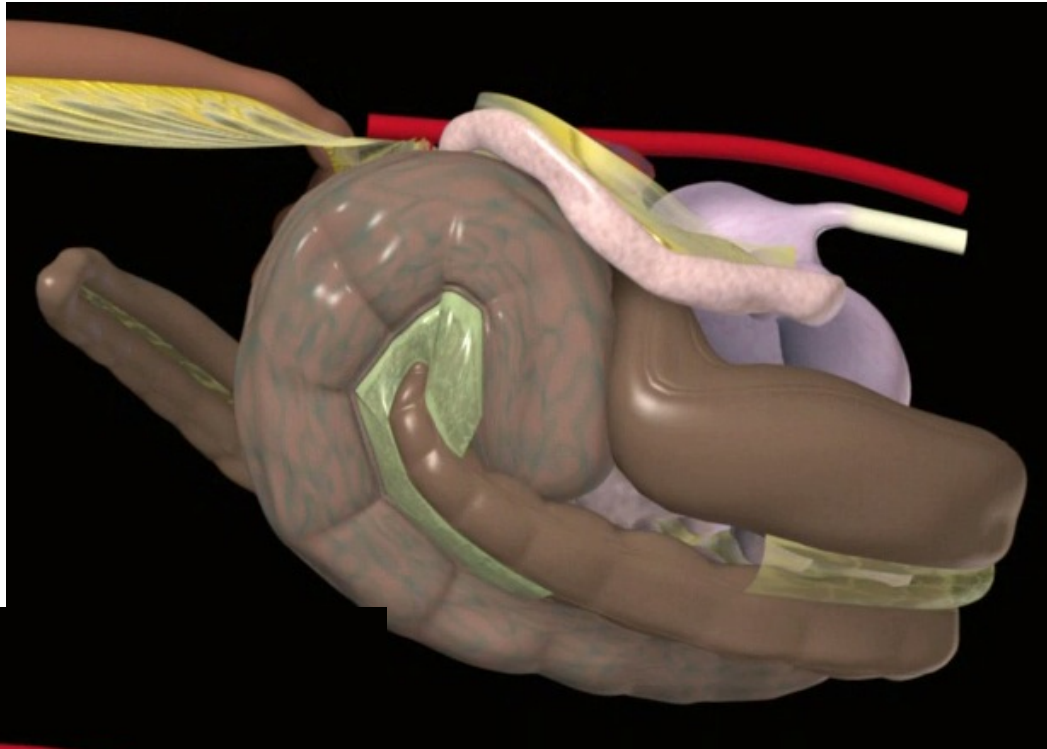
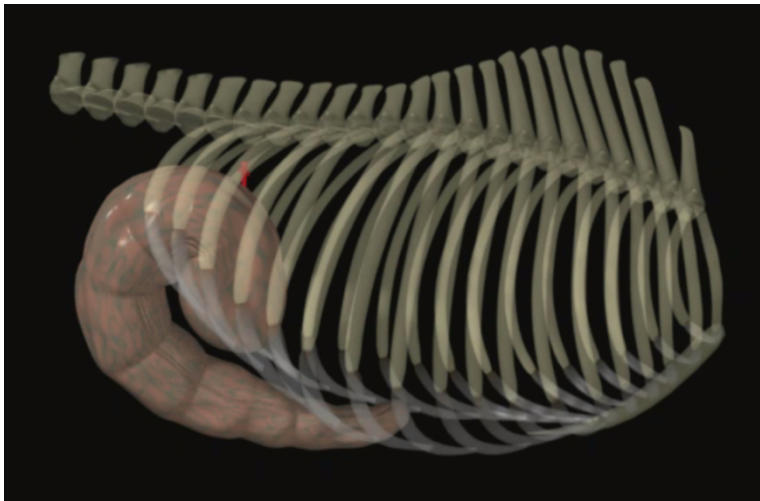
SMALL INTESTINAL STRANGULATION



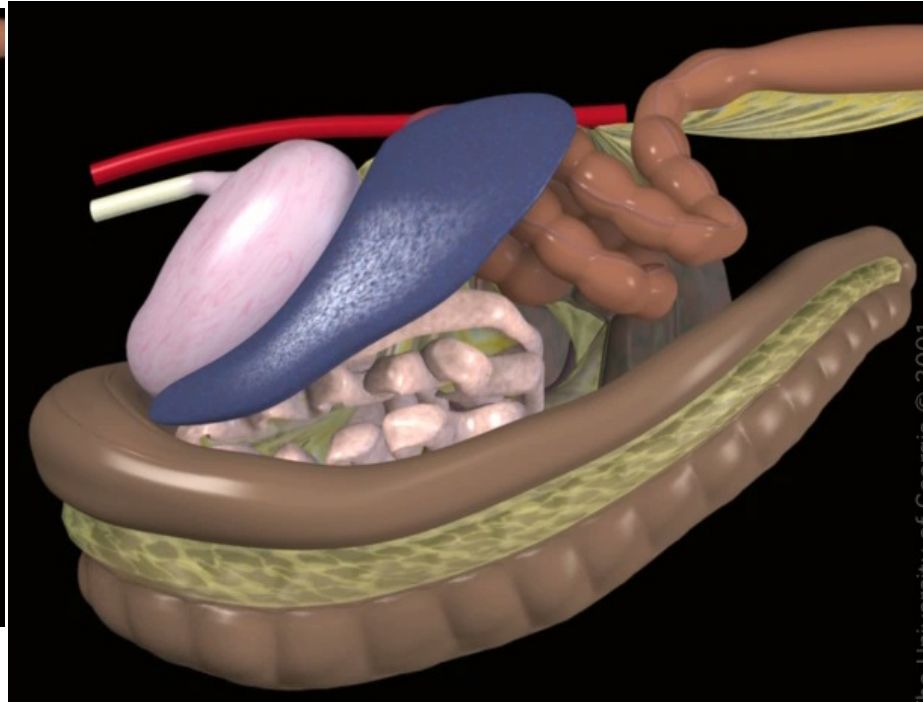
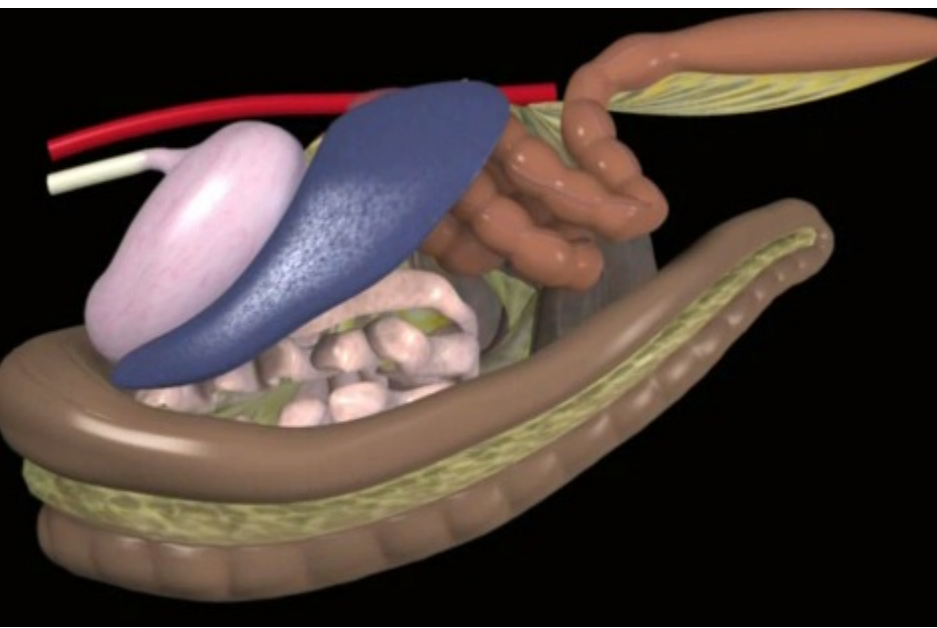
STOMACH AND DORSAL COLON ASPORTED



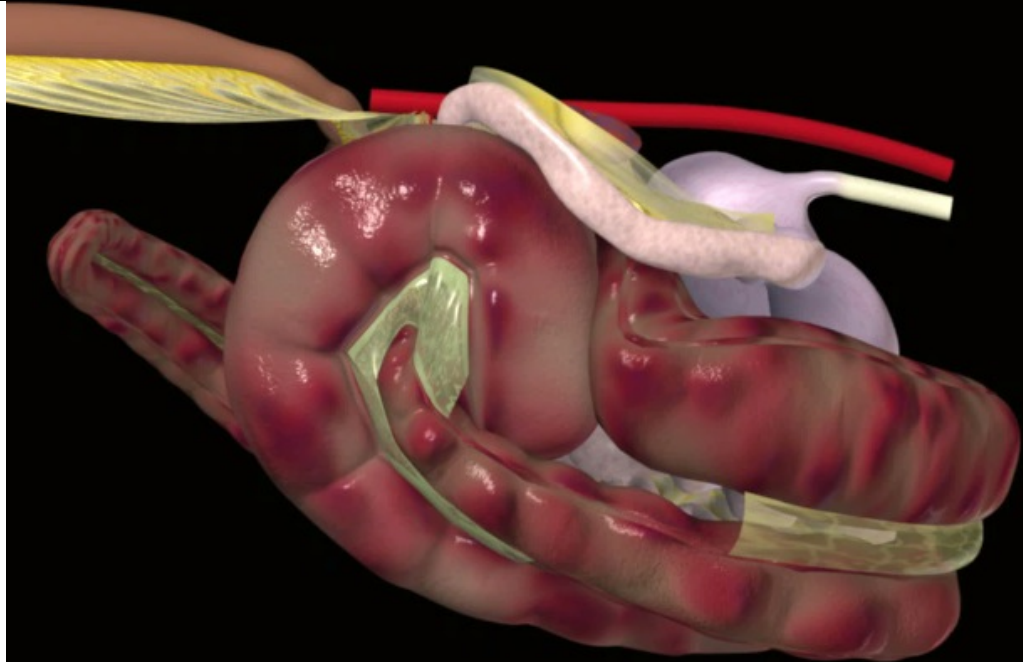
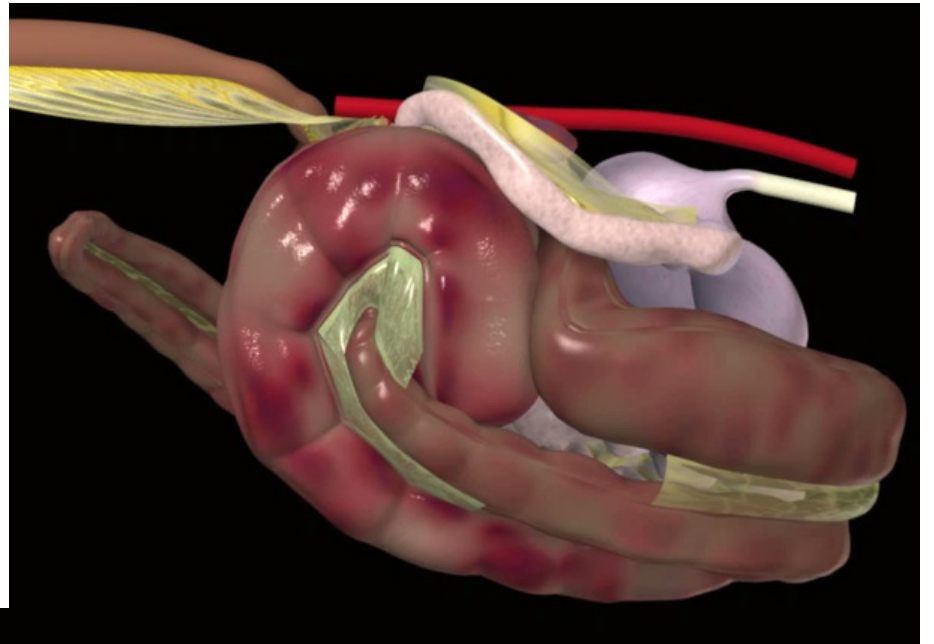
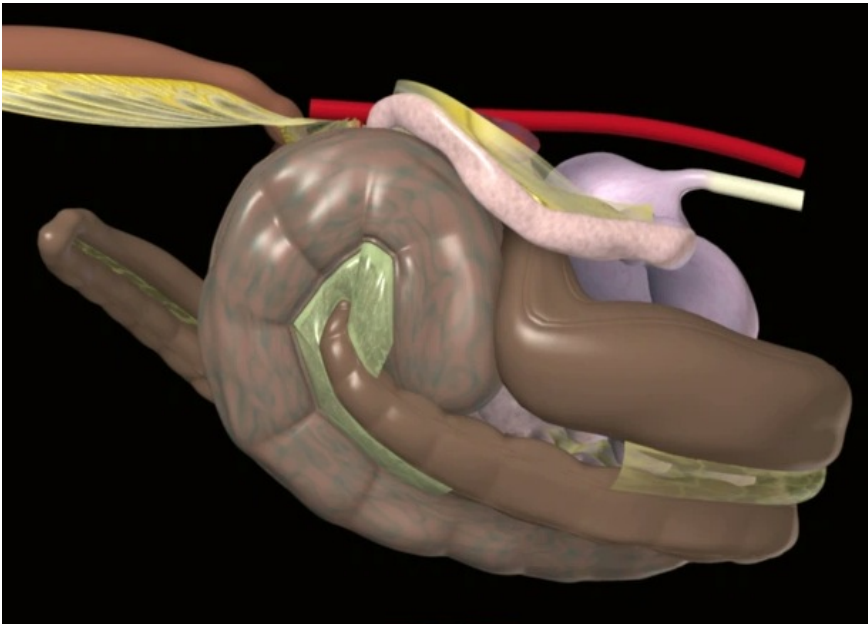
CECAL TYMPANY



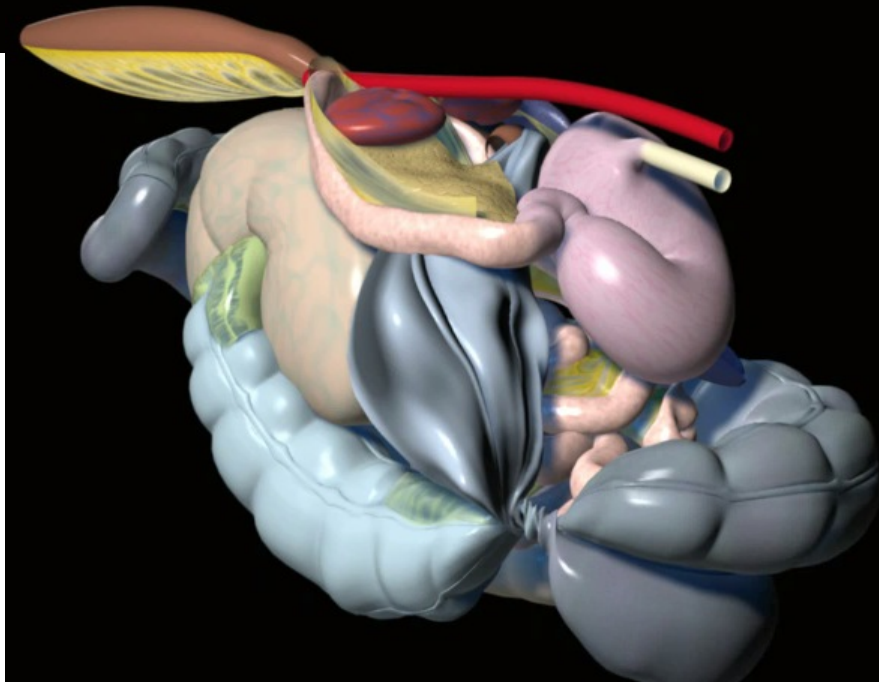
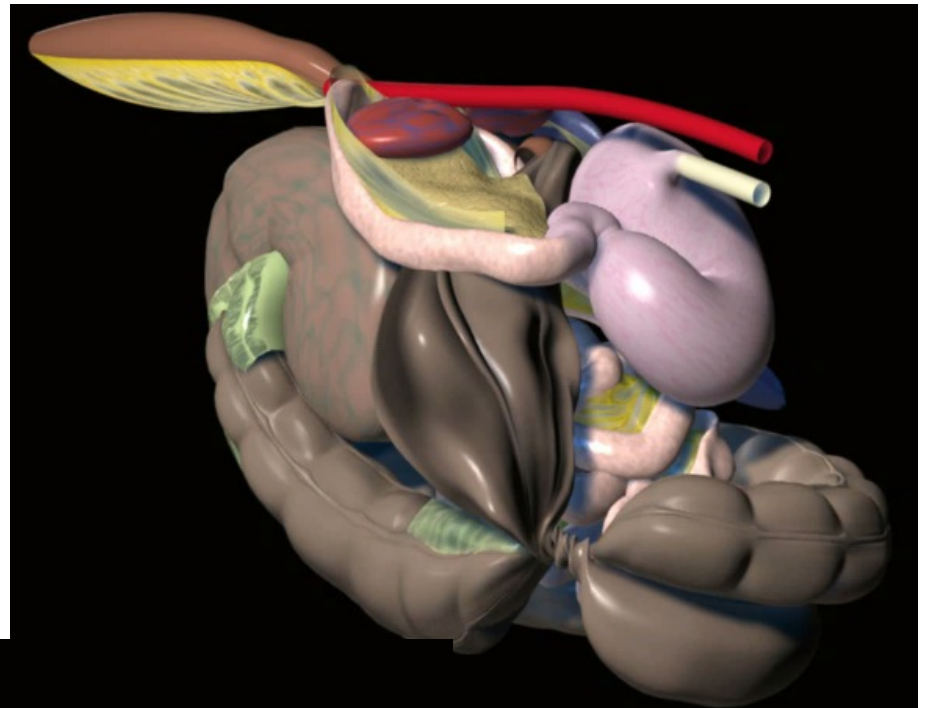
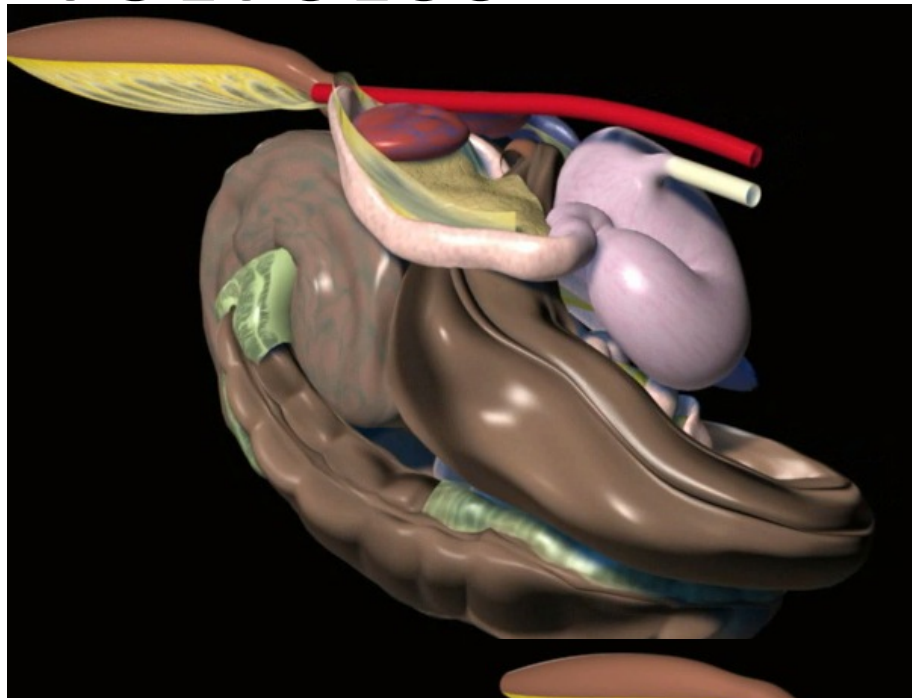
LARGE COLON IMPACTION



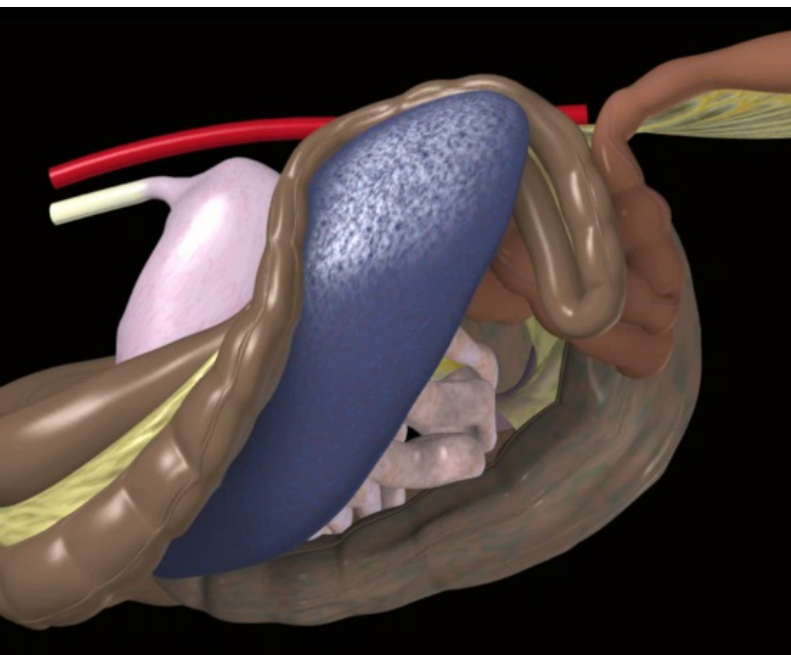
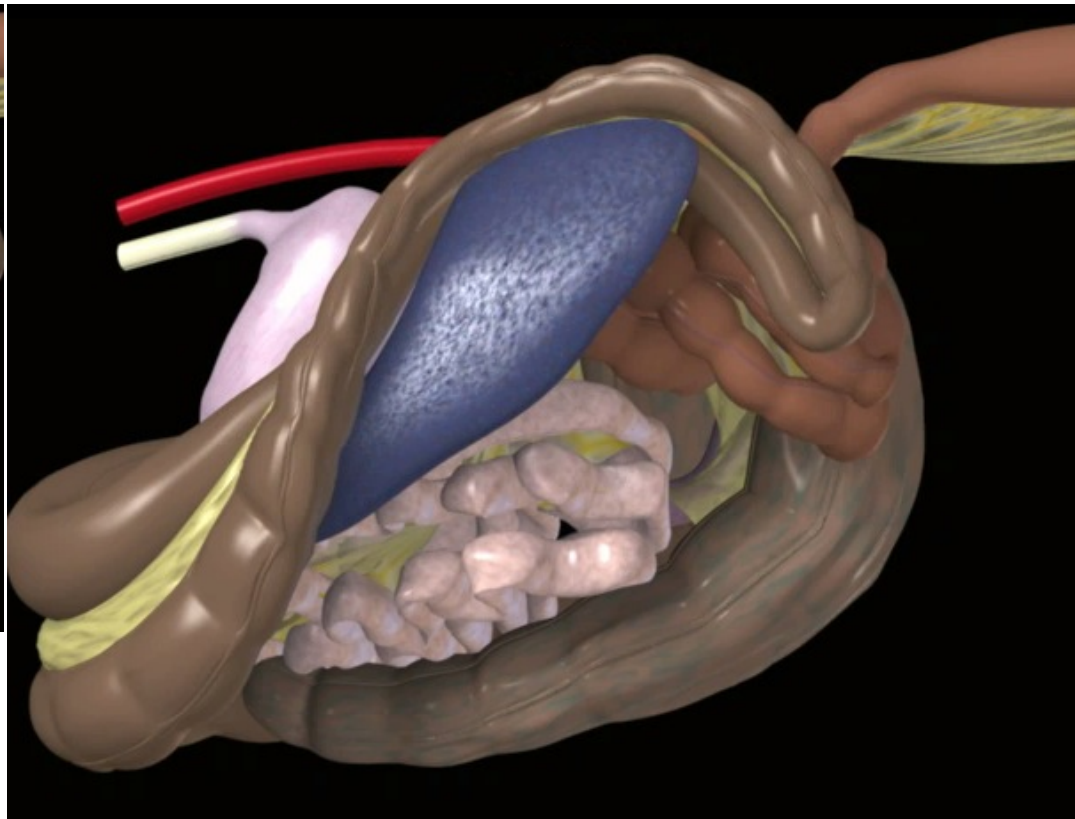
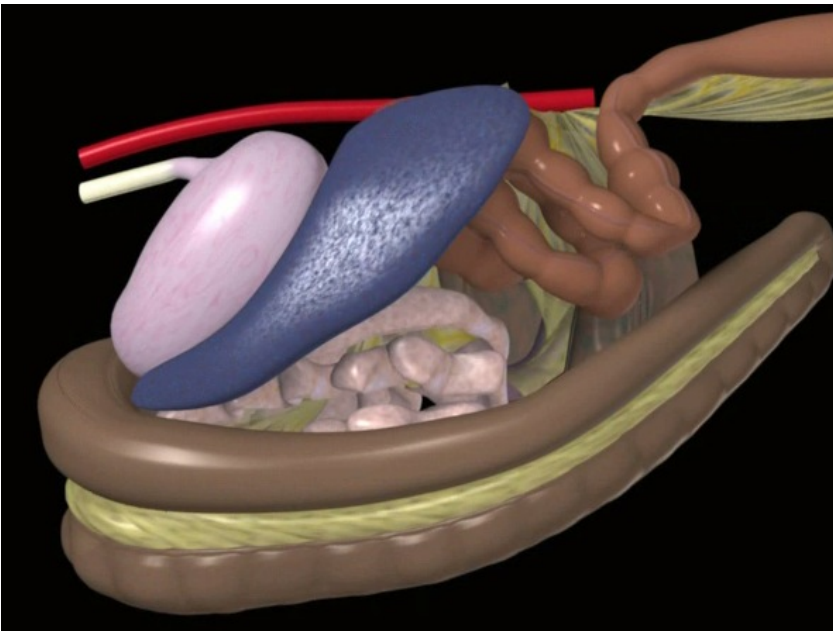
colitis



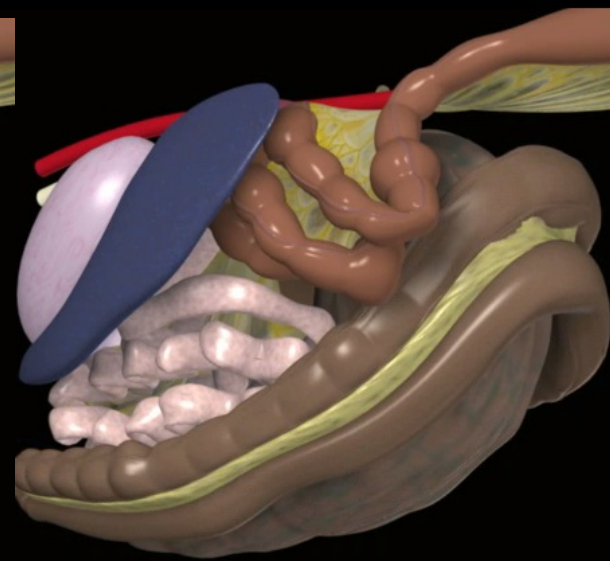
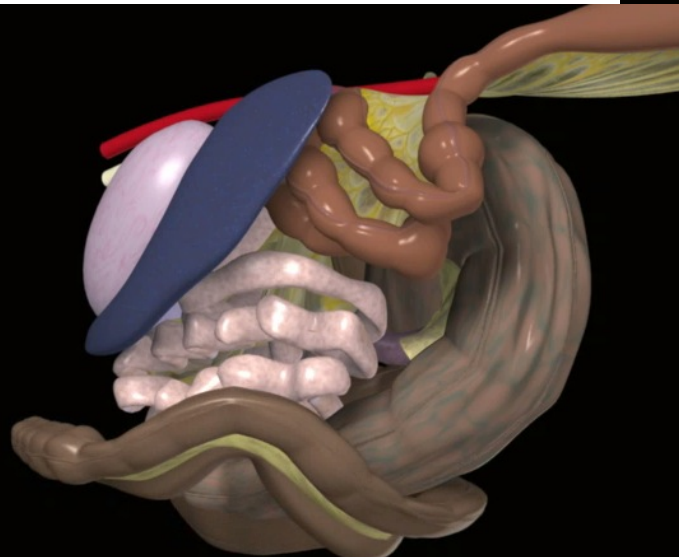
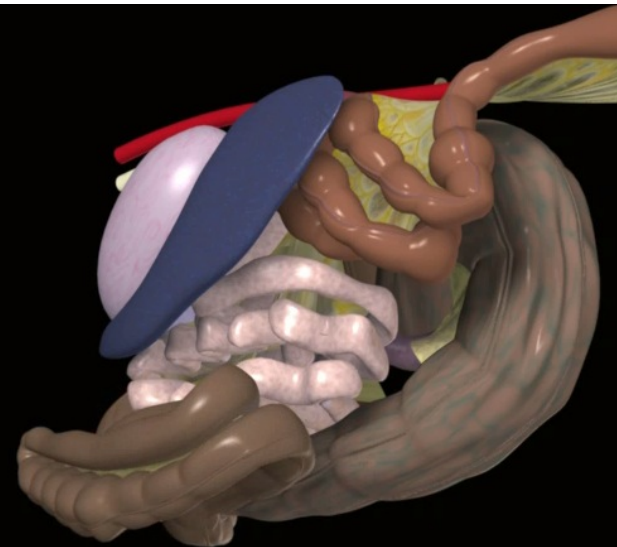
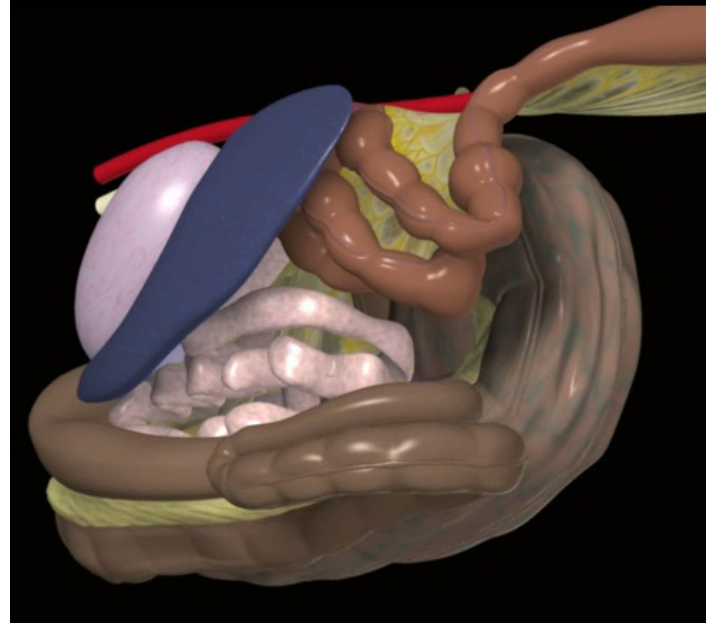
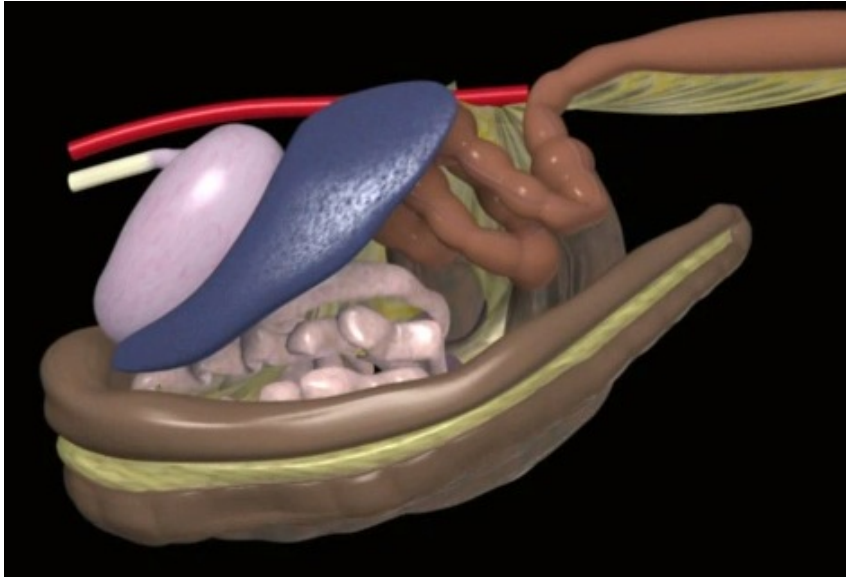
VOLVULUS



LEFT DORSAL DISPLACEMENT



RIGHT DORSAL DISPLACEMENT Illustration 1



RIGHT DORSAL DISPLACEMENT Illustration 2

