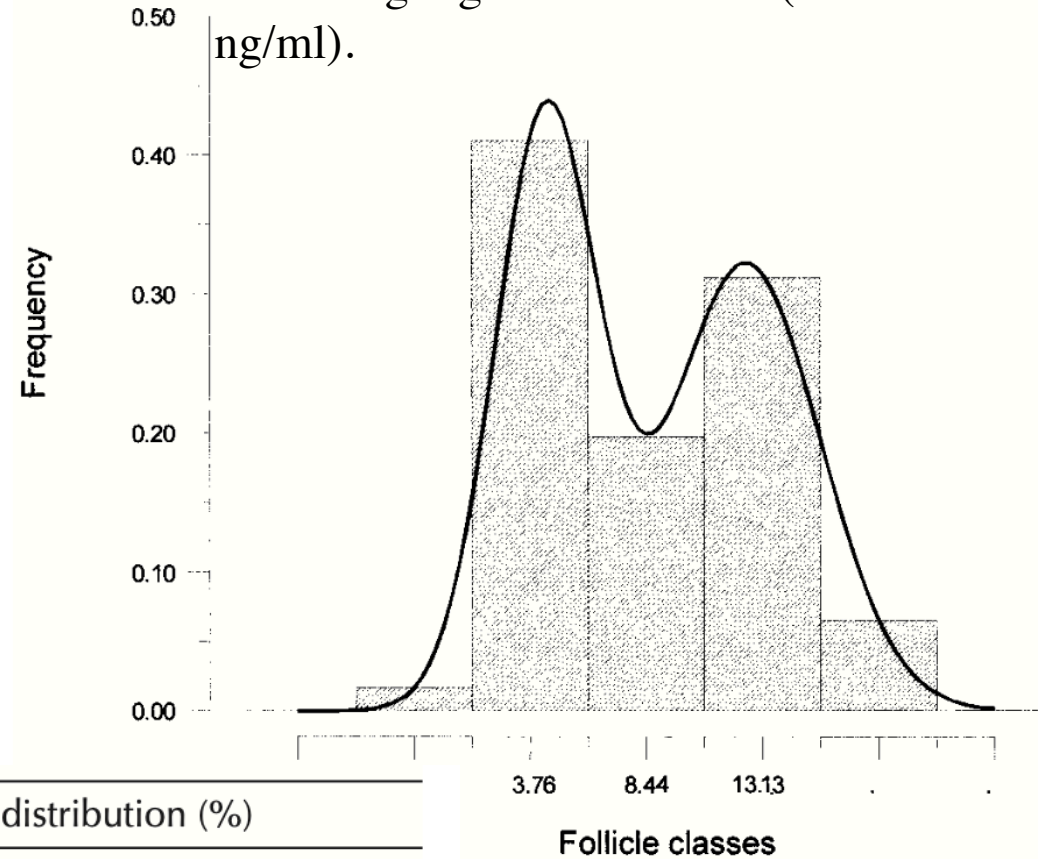
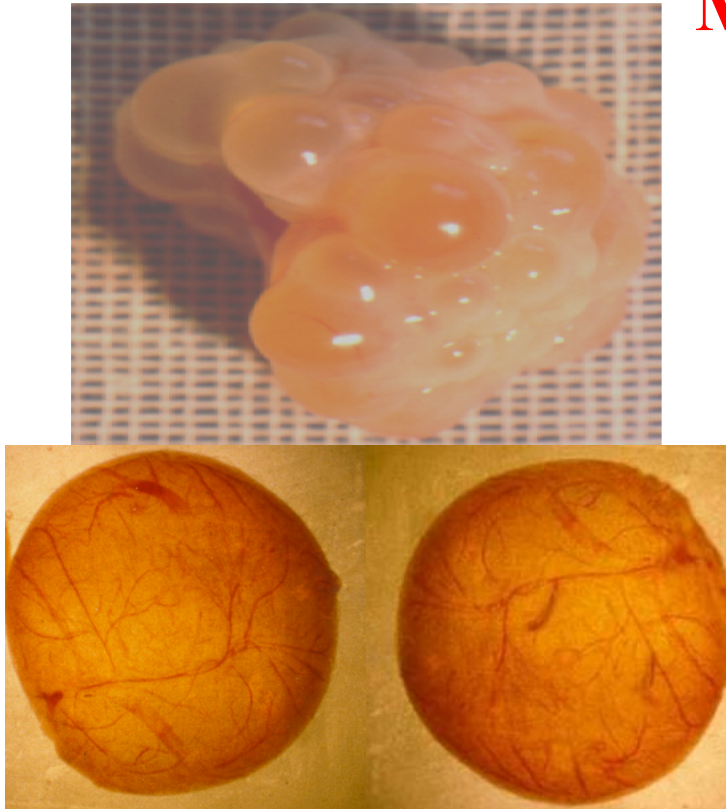


# MEDIUM ANTRAL FOLLICLES

56% of follicles exhibiting low VEGF levels (mean value 3.76 ng/ml) and 44% of follicles exhibiting high VEGF levels (mean 13.13 ng/ml).



	Vascular area distribution (%)		
	Total	Inner network	Outer network
High VEGF follicles <sup>a</sup>	2.54 ± 0.58 <sup>c</sup>	1.19 ± 0.47 <sup>c</sup>	1.35 ± 0.58 <sup>c</sup>
Low VEGF follicles <sup>a</sup>	1.29 ± 0.67 <sup>b</sup>	0.67 ± 0.34 <sup>b</sup>	0.61 ± 0.38 <sup>b</sup>
Atretic follicles	1.01 ± 0.37 <sup>b</sup>	0.15 ± 0.08 <sup>d</sup>	0.86 ± 0.44 <sup>b</sup>

# CORRELATION BETWEEN ESTRADIOL AND VEGF

