

Endocannabinoids as biomarkers of human reproduction

Cinzia Rapino^{1,2,†}, Natalia Battista^{3,4,†}, Monica Bari^{4,5},
and Mauro Maccarrone^{4,6,*}

¹Faculty of Veterinary Medicine, University of Teramo, Teramo, Italy ²StemTeCh Group, Chieti, Italy ³Faculty of Bioscience and Technology for Food, Agriculture and Environment, University of Teramo, Teramo, Italy ⁴European Center for Brain Research/IRCCS Santa Lucia Foundation, Rome, Italy ⁵Department of Experimental Medicine and Surgery, Tor Vergata University of Rome, Rome, Italy ⁶Center of Integrated Research, Campus Bio-Medico University of Rome, Rome, Italy

*Correspondence address. Center of Integrated Research, Campus Bio-Medico University of Rome, Via Alvaro del Portillo 21, 00128 Rome, Italy. Tel: +39 06 2254 19169; Fax: +39 06 2254 1456; E-mail: m.maccarrone@unicampus.it

Submitted on November 29, 2013; resubmitted on January 9, 2014; accepted on January 13, 2014

TABLE OF CONTENTS

- Introduction
 - Current and potential biomarkers in clinical practice
 - Overview of the eCB system in reproductive events
 - Methodologies for detection of eCBs in human reproductive matrices
- Methods
- eCBs in the female reproductive tract
 - eCB levels in blood during pregnancy
 - eCB levels in the ovary and follicular fluid
 - eCBs at the maternal–fetal interface
- eCBs in the male reproductive tract
 - eCBs in the regulation of sperm functions
- eCBs and other peripheral factors involved in reproduction
- Clinical relevance of eCBs in female and male fertility
- Conclusions

BACKGROUND: Infertility is a condition of the reproductive system that affects ~10–15% of couples attempting to conceive a baby. More than half of all cases of infertility are a result of female conditions, while the remaining cases can be attributed to male factors, or to a combination of both. The search for suitable biomarkers of pregnancy outcome is a challenging issue in human reproduction, aimed at identifying molecules with predictive significance of the reproductive potential of male and female gametes. Among the various candidates, endocannabinoids (eCBs), and in particular anandamide (AEA), represent potential biomarkers of human fertility disturbances. Any perturbation of the balance between synthesis and degradation of eCBs will result in local changes of their tone in human female and male reproductive tracts, which in turn regulates various pathophysiological processes, oocyte and sperm maturation included.

METHODS: PubMed and Web of Science databases were searched for papers using relevant keywords like ‘biomarker’, ‘endocannabinoid’, ‘infertility’, ‘pregnancy’ and ‘reproduction’.

RESULTS: In this review, we discuss different studies on the measurements of AEA and related eCBs in human reproductive cells, tissues and fluids, where the local contribution of these bioactive lipids could be critical in ensuring normal sperm fertilizing ability and pregnancy.

[†] Cinzia Rapino and Natalia Battista contributed equally to this manuscript and should be considered joint first authors.

CONCLUSION: Based on the available data, we suggest that the AEA tone has the potential to be exploited as a novel diagnostic biomarker of infertility, to be used in association with assays of conventional hormones (e.g. progesterone, β -chorionic gonadotrophin) and semen analysis. However further quantitative research of its predictive capacity is required.

Key words: biomarkers / endocannabinoids / human reproduction / infertility / pregnancy

Introduction

The reproductive events needed for pregnancy establishment consist of multiple steps that must successfully occur at exactly the right time and in the right place. To become fully competent for fertilization, oocytes and sperm cells must undergo a series of differentiation and maturation events (Voronina and Wessel, 2003; Toshimori, 2009). On the female side, aberrations in the correct embryo placement along the uterus, decidualization, placentation and intrauterine embryonic growth can result in the onset of pre-eclampsia, miscarriage and/or preterm birth (Cha et al., 2012). On the male side, sperm cells should undergo capacitation and acrosome exocytosis in order to fertilize oocytes correctly (Buffone et al., 2012; Aitken, 2013). Any derangement in this complex sequence of events may affect the competence of sperm cells and their ability to commit to the final steps of fertilization (Barash et al., 2003; Das and Holzer, 2012). Therefore, the discovery of biomarkers that track the correct progression of pregnancy process, or reveal any possible complication including anomalies in female and male gametes, is a clinical imperative to provide an opportunity for timely and appropriate intervention (Achache and Revel, 2006; Polsani et al., 2013; Volk et al., 2013). Endocannabinoids (eCBs) are a new groups of bioactive lipids that act as critical signals in various aspects of male and female human reproduction. The aim of this review is to outline and discuss the way forward in using eCBs as novel biomarkers of reproductive events, which have the potential to become predictive and diagnostic tools of fertility defects, to be exploited for improving pregnancy outcomes and ameliorating the management of fertility problems in humans.

Current and potential biomarkers in clinical practice

Nowadays, there is an ongoing research to identify and develop novel molecular and/or genetic biomarkers which might improve diagnostic accuracy or help in detecting different diseases (Achache and Revel, 2006; Lédée et al., 2011). Indeed, the current biomarkers used in clinical practice are limited, since most of the available assays do not have the required sensitivity and specificity (Palmer and Barnhart, 2013). Therefore, it is often difficult to translate results obtained at the bench to the bed site, and research efforts frequently end at the initial phases of biomarker discovery, without any validation of preclinically promising targets (Barnhart et al., 2010). In addition, the phenotyping of samples, collection and storage of biomaterials, use of novel assays, and over-interpretation of confounding/chance findings all represent serious limitations for a biomarker to reach the final step of validation (Pepe et al., 2008; Altman et al., 2012; Hardarson et al., 2012). Since clinicians need reliable biomarkers for the diagnosis of reproductive defects, the use of robust assays is required to qualify new molecules upon their identification. Nevertheless, in view of their clinical relevance, the National Institutes of Health defined a serum biomarker as 'a characteristic that

is objectively measured and evaluated as an indicator of normal biological processes, pathogenic processes or pharmacologic responses to a therapeutic intervention' (Woodcock, 2010). A biomarker in clinical reproductive medicine may be useful to better understand and predict ovarian reserve, gamete quality, embryo viability and euploidy, as well as endometrial receptivity and pregnancy outcome, including miscarriage, ectopic pregnancy and obstetric complications (e.g. pre-eclampsia or preterm labor) (Palmer and Barnhart, 2013). Also in the management of *in vitro* fertilization (IVF) protocols, specific biomarkers could be used to discriminate between suitable and unsuitable embryos to be transferred. At present, the only biomarker used routinely in clinical practice is human chorionic gonadotrophin (hCG) (Rausch and Barnhart, 2012; Seeber, 2012). Indeed, once a pregnancy is established, the rise of hCG produced by the trophoblasts indicates the viability of the embryo. Additional biomarkers in serum, including progesterone (P), estrogen (E_2), alpha-fetoprotein, fetal fibronectin and inhibin A, have been studied and used in clinical practice to track the progress of a normal pregnancy, or to determine complications related to this process (Stovall et al., 1992; Grosskinsky et al., 1993; Seifer et al., 1996; Ness et al., 1998; Krause et al., 2001; Lambert-Messerlian and Canick, 2004; Abdelazim, 2013). The chemical structures of the lipid hormones P and E_2 are shown in Fig. 1A. At an early stage and before placental production, P is secreted by the corpus luteum and becomes a critical signal for the establishment of normal pregnancy. Indeed serum P appears to be the single most specific biomarker for distinguishing viable from non-viable pregnancies in early gestation (Cowan et al., 1992) and, in combination with transvaginal ultrasound hCG, it is useful for diagnosis of ectopic pregnancy (Arck et al., 2007). Additionally, E_2 levels provide important information on ovarian function and diseases that affect testes, ovaries or adrenal glands (Domingues et al., 2010). Blood E_2 levels can also allow clinicians to monitor the progression of pregnancy, efficacy of fertility treatments, or evaluate menopause symptoms. Furthermore, inhibin A and beta-core hCG, the major metabolite of hCG in maternal urine, have been studied as potential biomarkers for determining ectopic versus normal pregnancies (Cole et al., 1994; Seifer et al., 1996). The biochemical profiles of these biomarkers and their involvement in clinical female reproductive practice are reported in Table I. Incidentally, it should be noted that for pre-eclampsia, pre-symptomatic predictive blood-borne potential biomarkers include activin-A (Diesch et al., 2006), C-reactive protein (Mihu et al., 2008), placenta growth factor and its receptor soluble fms-like tyrosine kinase (s-IFLT) (Shokry et al., 2010), leptin (Sucak et al., 2010), transforming growth factor- α I, and plasminogen activator inhibitor (Belo et al., 2002). Yet, these biomarkers have limited clinical exploitation, due to poor sensitivity and specificity of the available methods for their detection. So far, there is no single marker that allows early prediction of pre-eclampsia in women. Moreover, ovarian reserve tests comprise hormonal markers [basal follicle stimulating hormone (FSH), E_2 , inhibin-B, antimullerian hormone] and ultrasonographic markers (ovarian volume, antral follicle counts), yet they all have

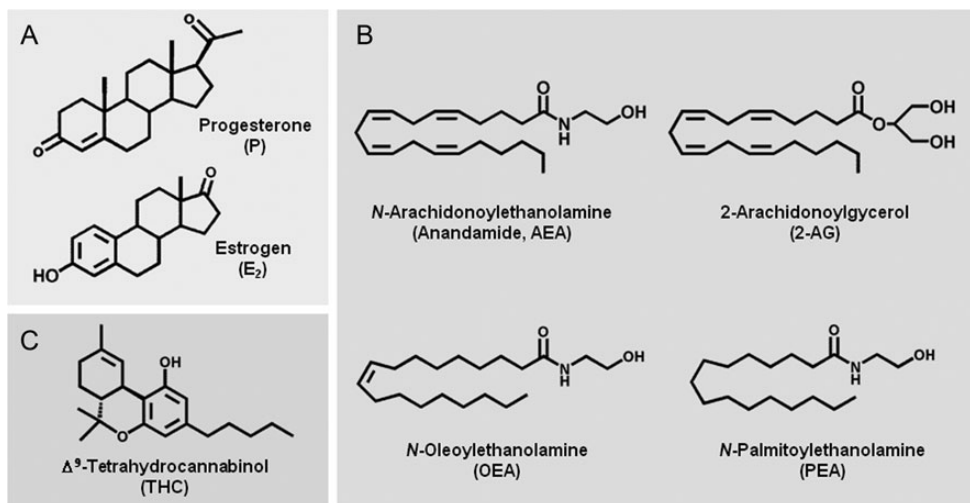


Figure 1 Chemical structures of current and potential lipid biomarkers of reproduction. (A) Steroid hormones; (B) eCBs and eCB-like compounds; (C) THC. eCB, endocannabinoid.

Table 1 Main serum biomarkers used in clinical female reproductive practice.

Type	Description	Role
β-Human chorionic gonadotrophin (hCG)	Glycoprotein produced by trophoblastic cells of the placenta	Pregnancy viability
Progesterone (P)	Steroid hormone secreted by corpus luteum and placenta for the preparation of endometrium for a possible pregnancy	Pregnancy viability in early gestation Ectopic pregnancy
Estrogen (E ₂)	Sex hormone produced primarily in ovary and testes by aromatization of testosterone. Small amounts are produced by adrenal glands	Pregnancy dynamics Testes, ovaries or adrenal glands diseases Menopause
α-Fetoprotein	Oncofetal glycoprotein produced in the yolk sac during the first trimester, and in the fetal liver and gastrointestinal tract during late pregnancy	Abnormal placentation (placenta previa and placenta accreta) Pre-eclampsia Fetal loss and preterm delivery
Fetal fibronectin	Glycoprotein produced by fetal cells, found in amniotic fluid and placenta	Spontaneous preterm birth
Inhibin A	Peptide produced by corpus luteum and regulated by hCG	Down's syndrome Ectopic pregnancy

major limitations in accuracy, invasiveness and cost parameters that need to be considered carefully to make reliable predictions (Domingues *et al.*, 2010). It is important to point out that most of the potential biomarkers

studied in reproductive medicine, or those already in use, are aimed at diagnosing diseases, like infertility, polycystic ovary syndrome, endometriosis or determining the viability of early pregnancy, just to mention a few (Seeber, 2012; Fassbender *et al.*, 2013; Iliodromiti *et al.*, 2013). In this context, the goal has been to identify individual markers of each disease, whereas only a few examples of multivariate diagnostic markers have been reported until now (Nolen and Lokshin, 2013; Palmer and Barnhart, 2013). However, it should be pointed out that the use of two or more biomarkers may indeed provide a diagnostic test with better sensitivity and specificity (Ridker *et al.*, 2003). Combinations of biomarkers have also been shown to support rapid diagnosis of early or ectopic pregnancies, suggesting that a multiple biomarker strategy might help to distinguish viable from non-viable pregnancies (Kuc *et al.*, 2011; Kagan *et al.*, 2012; Daponte *et al.*, 2013; Nicolaidis *et al.*, 2013).

On the male side, conventional semen analysis provides important information about sperm concentration, viability, motility and morphology, but is considered a poor indicator of reproductive potential (Guzick *et al.*, 2001; Jequier, 2010). Although fertile men have higher mean sperm parameters (concentration, motility and morphology) than infertile men, there is a large overlap between fertile and infertile subjects (Guzick *et al.*, 2001). Sperm analysis provides useful clues for the initial evaluation of male infertility, but it does not measure fertility itself (Guzick *et al.*, 1998; Jequier, 2010) nor does it take into account functional aspects of sperm cells like the ability to fertilize the oocyte. In addition, since mammalian fertilization and subsequent embryo development depend partially on the inherent integrity of sperm DNA (Ahmadi and Ng, 1999; Agarwal and Said, 2003), different assays have been developed and used in research laboratories to assess sperm DNA damage, which is more clinically informative and relevant (Vasan, 2011). In any case, the results of sperm DNA integrity testing alone do not predict pregnancy rates achieved through natural or artificial conception, as warned by the American Society for Reproductive Medicine (Practice Committee of the American Society for Reproductive Medicine, 2013).

Here we will support the view, based on data from the literature from human studies, that bioactive lipids like eCBs might represent a novel class of biomarkers to be exploited in the clinical practice of reproductive medicine.

Overview of the eCB system in reproductive events

eCBs are non-classical neurotransmitters, released from membrane phospholipids and produced 'on demand' by the cell (Pacher and Kunos, 2013). The best characterized eCBs are *N*-arachidonylethanolamine, also known as anandamide (AEA), and 2-arachidonoylglycerol (2-AG), both shown in Fig. 1B. These bioactive lipids act by binding to type-1 and type-2 cannabinoid receptors (CB₁ and CB₂) (Pertwee et al., 2010), to GPR55, a recently discovered putative 'CB₃' (Ross, 2009; Gasperi et al., 2013), and to nuclear receptors like the peroxisome proliferator-activated receptors (PPARs) (Pistis and Melis, 2010). AEA behaves also as an endovanilloid, by binding to transient receptor potential vanilloid type 1 (TRPV1) channels (Di Marzo and De Petrocellis, 2010). The 'canonical pathway' for AEA biosynthesis occurs in two steps, of which the first is catalyzed by the *N*-arachidonoylphosphatidyl ethanolamine-specific phospholipase D (NAPE-PLD), a member of the metallo-β-lactamase family that is molecularly distinguished from the known PLD isoforms that hydrolyze common glycerophospholipids (Okamoto et al., 2009). Alternative metabolic routes for AEA biosynthesis include: (i) members of the PLA/acyltransferase family like Ca²⁺-independent *N*-acyltransferases and (ii) multistep pathways via *N*-acylated lysophospholipids (for a recent review see Ueda et al., 2013, and references therein). On the other hand, the PLC–diacylglycerol lipase (DAGL) pathway is the most important route for the biosynthesis of 2-AG (Bisogno et al., 2003; Ueda et al., 2011). Both AEA and 2-AG signaling pathways are terminated by enzymatic hydrolysis, mediated primarily by the serine hydrolases fatty acid amide hydrolase (FAAH, also called FAAH-I) (McKinney and Cravatt, 2005; Fezza et al., 2008) and monoacylglycerol lipase (MAGL) (Dinh et al., 2002), respectively. However, other oxidative enzymes such as cyclooxygenase-2 (COX-2), different lipoxygenase (LOX) isozymes and cytochrome P₄₅₀ add molecular oxygen to AEA or 2-AG, producing prostaglandin-ethanolamides (Kozak et al., 2002) and glyceryl esters (Kozak et al., 2001), or hydroxy-anandamides and hydroxyeicosatetraenoyl-glycerols (van der Stelt et al., 2002), respectively. In addition, despite controversies on the different routes by which eCBs can cross plasma membranes and be shuttled to their intracellular targets or catabolic enzymes (Fowler, 2013), eCB transport across membranes appears to be a protein-mediated process, which occurs through an endocannabinoid membrane transporter (EMT) (Chicca et al., 2012). Fatty acid binding proteins, heat shock protein 70 and albumin (Maccarrone et al., 2010, and references therein) might also contribute to AEA uptake. In addition, a partly truncated FAAH-I, termed FAAH-I like anandamide transporter (FLAT) (Fu et al., 2011), was proposed as an intracellular transporter of AEA, although a recent paper, published during the preparation of this manuscript, demonstrated that this protein might better mediate AEA inactivation (Leung et al., 2013). Taken together eCBs, their receptors, and biosynthetic and catabolic enzymes, as well as putative transporter(s), form the endocannabinoid system (ECS), schematically depicted in Fig. 2. In this context, it should be noted that *in vivo* levels of AEA including those in reproductive organs are regulated by a tight balance between

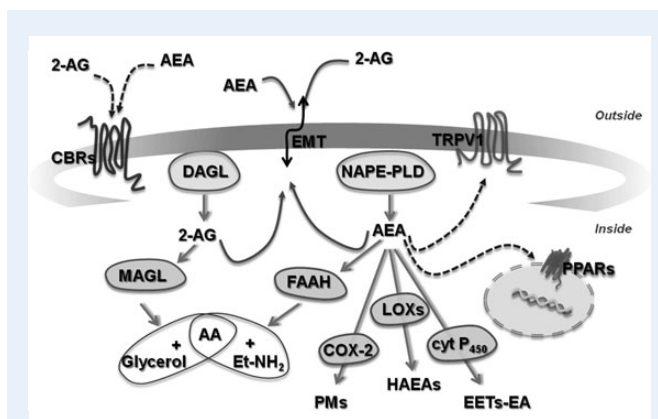


Figure 2 Biosynthesis, degradation and target receptors of AEA and 2-AG. AEA is mainly synthesized by NAPE-PLD, whereas DAGL is the most important enzyme for the biosynthesis of 2-AG. AEA and 2-AG signaling pathways are terminated by enzymatic hydrolysis, mediated primarily by the serine hydrolases FAAH and MAGL, respectively. The transport of eCBs across the plasma membrane is due to a putative EMT. eCBs exert their biological activity by binding to CBRs, whereas TRPV1 and PPARs are the main intracellular targets for AEA. The latter compound can also undergo oxidation to HAEAs by LOXs, or to PMs by COX-2. Additionally, cyt P₄₅₀ can also oxygenate AEA to generate EETs-EA. Abbreviations: AEA, anandamide; 2-AG, 2-arachidonoylglycerol; NAPE-PLD, *N*-arachidonoylphosphatidylethanolamine-specific phospholipase D; DAGL, diacylglycerol lipase; FAAH, fatty acid amide hydrolase; MAGL, monoacylglycerol lipase; eCB, endocannabinoid; EMT, endocannabinoids membrane transporter; CBRs, cannabinoid receptors; TRPV1, transient receptor potential vanilloid type 1; PPARs, peroxisome proliferator-activated receptors; AA, arachidonic acid; Et-NH₂, ethanolamine; HAEAs, hydroperoxy-anandamides; LOXs, lipoxygenases; PMs, prostamides; COX-2, cyclooxygenase-2; cyt P₄₅₀, cytochrome P₄₅₀; EETs-EA, epoxygenated fatty acids-ethanolamide.

biosynthetic and degradative enzymes (Wang et al., 2006a, and references therein). Changes in the activity and/or expression of these enzymes determine significant fluctuations in AEA levels, which in turn can lead to success or failure of pregnancy (Schuel, 2006; Karasu et al., 2011).

The ECS system regulates diverse physiologic processes, and has attracted considerable attention in reproductive pathophysiology for the potential use of its distinct elements for the diagnosis and/or treatment of human infertility (Maccarrone, 2009). Indeed, there is accumulating evidence that alterations of some ECS components in the various stages of reproductive events may negatively affect the final outcome (Di Blasio et al., 2013). Previous data have highlighted that AEA metabolizing enzymes, especially FAAH, are fundamental to ensure proper AEA levels, and hence to avoid impairments of fertility signals networks, both on the female (Maccarrone et al., 2000; Sun et al., 2009; Trabucchi et al., 2009) and male side (Francavilla et al., 2009; Aquila et al., 2010a; Lewis et al., 2012; Amoako et al., 2013). Studies performed on CB₁ and CB₂ knock-out mice demonstrate that they suffer from pregnancy loss (Wang et al., 2004; Sun and Dey, 2008), and that CB₁ deficiency leads to embryo retention in the oviduct for an extended period, and hence to ectopic pregnancy and reduced fertility (Wang et al., 2004). Complete sequestration of CB₁-mediated signaling causes abnormal embryo development (Wang et al., 2004), whereas female mice

lacking CB₂ do not present embryos correctly hatched to the implantation sites (Wang *et al.*, 2004). Embryo retention, due to failure in the oviductal-uterine embryo transport, might be ascribed to deficient CB₁ expression in maternal oviducts (Wang *et al.*, 2004; Guo *et al.*, 2005; Sun and Dey, 2012), or to high oviductal AEA levels, as reported in *Faah* knock-out mice (Wang *et al.*, 2006b). Similarly, both high and low eCB signaling compromise the placentation process (Sun *et al.*, 2010), as well as parturition (Wang *et al.*, 2008). On the male side, binding of eCBs to cannabinoid and vanilloid receptors plays a key role in controlling spermatogenesis, the acquisition of sperm fertilizing ability (i.e. sperm viability and motility), capacitation and sperm-oocyte fusion (Francavilla *et al.*, 2009). Very recently, hot spots in the regulation of sperm quality by some ECS members have been discussed (Maccarrone, 2013), and involve plasma membrane dynamics, epigenetic control and chromatin remodeling (Chioccarelli *et al.*, 2010; Battista *et al.*, 2012). Additional information in humans reported in the following sections complement comprehensive reviews that have appeared recently in the literature (Bambang *et al.*, 2012; Battista *et al.*, 2012; Chan *et al.*, 2013; Di Blasio *et al.*, 2013).

Methodologies for detection of eCBs in human reproductive matrices

eCBs have been detected in several human matrices, demonstrating that alterations in their levels might be associated with pathological dysfunctions (Pertwee, 2013). A variety of analytical techniques have been developed for the qualitative detection and quantitative determination of these compounds, as detailed in a recent review (Battista *et al.*, 2014, and references therein). It should be stressed that AEA and 2-AG do not have chromophores or fluorescent moieties in their structures, which could make these molecules easily detectable by gas chromatography (GC) separation and direct UV absorbance detection. In addition, the low eCB content in some non-conventional matrices (i.e. follicular fluids and seminal plasma) requires sensitive, accurate and reproducible methods for proper detection in clinical samples. The search for novel methodological approaches is constantly evolving to overcome the pitfalls due to the matrix effect, extraction yield and low chemical stability of eCBs (i.e. acyl transmigration from 2-AG to 1-AG), which still affect available analytical procedures (Buczynski and Parsons, 2010). Moreover, sample storage and extraction (through solid phase extraction or liquid-liquid extraction methods) represent crucial steps, which might interfere with the analysis and affect the final results. Liquid chromatography (LC) coupled to one mass spectrometry (MS) detector (LC-MS) or two (LC-MS/MS) is largely used for the determination of eCBs in biological samples (Zoerner *et al.*, 2011). Lately, ultra high performance LC (UPLC) has been also used in the form of UPLC-MS/MS, in order to increase the analytical performance (Lam *et al.*, 2008, 2010; Amoako *et al.*, 2010; Fanelli *et al.*, 2012). Taking into account that studies on humans generate data with wide confidence intervals, the use of largely standardized methodologies with improved sensitivity may markedly reduce the variability of results obtained so far by independent investigators.

The quantitative detection of eCB content in human reproductive cells, tissues and fluids through different methodologies is summarized in Table II, and represents an emerging issue because of its potential exploitation for the diagnosis and/or therapy of male and female infertility, as detailed in the next sections.

Table II Different methods for eCB detection in human female and male reproductive matrices.

Matrix	Methodology	References
Plasma	LC-MS	Maccarrone <i>et al.</i> (2002a) and Habayeb <i>et al.</i> (2004, 2008a)
	UPLC-MS/MS	Lam <i>et al.</i> (2008), El-Talatini <i>et al.</i> (2009a, b, 2010), Nallendran <i>et al.</i> (2010), Taylor <i>et al.</i> (2011), Tong <i>et al.</i> (2012) and Gebeh <i>et al.</i> (2013a, b)
Fallopian tubes	UPLC-MS/MS	Gebeh <i>et al.</i> (2012)
Follicular fluid	LC-MS	Schuel <i>et al.</i> (2002a)
	UPLC-MS/MS	El-Talatini <i>et al.</i> (2009b)
Amniotic fluid, placenta, fetal membranes	UPLC-MS/MS	Marczylo <i>et al.</i> (2010)
Milk	GC-MS	Di Marzo <i>et al.</i> (1998)
	LC-MS	Schuel <i>et al.</i> (2002a)
	UPLC-MS/MS	Lam <i>et al.</i> (2010)
Sperm cells	LC-MS	Francavilla <i>et al.</i> (2009) and Lewis <i>et al.</i> (2012)
Seminal plasma	LC-MS	Schuel <i>et al.</i> (2002a), Francavilla <i>et al.</i> (2009)
	UPLC-MS/MS	Amoako <i>et al.</i> (2010, 2013)

LC-MS, liquid chromatography-mass spectrometry; UPLC-MS, ultra-high performance liquid chromatography-mass spectrometry; GC-MS, gas chromatography-mass spectrometry.

Methods

PubMed and Web of Science databases were searched for papers using relevant keywords, like 'biomarker', 'endocannabinoid', 'infertility', 'pregnancy', 'reproduction' and 'sperm'.

We only included English journal articles published since 1973, based on their widely recognized relevance to the topic. Database research was focused on human and mammalian species.

eCBs in the female reproductive tract

eCBs play an important role in several female reproductive processes, including folliculogenesis, ovulation and oocyte maturation, as well as implantation and early pregnancy (Lazzarin *et al.*, 2004; Taylor *et al.*, 2007; El-Talatini *et al.*, 2009a, b, 2010; Peralta *et al.*, 2011). In the endometrium, high doses of eCBs alter these latter processes; additionally, they play a role in labor and parturition (Wang *et al.*, 2006a; Maccarrone, 2009; Nallendran *et al.*, 2010; Bari *et al.*, 2011; Xie *et al.*, 2012). On this basis, several independent groups have investigated the presence of eCBs in female reproductive fluids such as blood plasma, breast milk and oviductal fluid, by measuring the levels of AEA, 2-AG and related compounds, like OEA (*N*-oleoylethanolamine) and PEA (*N*-palmitoyl ethanolamine) (Schuel *et al.*, 2002a; El-talatini *et al.*, 2009a; Fonseca *et al.*, 2010; Lam *et al.*, 2010; Gebeh *et al.*, 2013a). The chemical structures of the latter two compounds are shown in Fig. 1B. It should be noted that studies on human subjects have been performed in women

undergoing IVF-embryo transfer programs or healthy volunteers with uncomplicated pregnancy, which provide the opportunity to perform eCB measurements only at different stages of the menstrual cycle or of pregnancy.

eCB levels in blood during pregnancy

It is well known that plasma AEA levels vary throughout the menstrual cycle, with highest levels in the follicular phase compared with luteal phase and with early pregnancy (Maccarrone et al., 2002a; Habayeb et al., 2004). A recent study analyzed plasma AEA concentrations obtained from female volunteers at different stages of the menstrual cycle, or from pregnant women, by using UPLC-MS/MS (Lam et al., 2008). This highly specific and reproducible method allowed an accurate analysis in reduced plasma sample volumes, showing an increase of AEA concentration at the follicular phase (1.45 ± 0.81 nM) compared with the luteal phase (0.77 ± 0.30 nM), in keeping with previous studies (Maccarrone et al., 2002a; Habayeb et al., 2004). Higher AEA contents in plasma at the time of ovulation, and lower concentrations in the luteal phase of the menstrual cycle, as well as at the beginning of implantation, are required to ensure a successful pregnancy (El-Talatini et al., 2009a). On the other hand, low FAAH and high AEA levels in blood are associated with spontaneous miscarriage, as reported in two studies where low FAAH activity was found in lymphocytes of women who spontaneously aborted (Maccarrone et al., 2000) compared with healthy controls. In keeping with these findings, a pilot study limited to a small number of participants reported higher plasma AEA level (~ 3 -fold) in women with threatened miscarriage with respect to the birth group (Habayeb et al., 2008a). Similarly, women undergoing successful IVF/intracytoplasmic sperm injection (ICSI) show low levels of AEA at the time of implantation, compared with women who fail to become pregnant (El-Talatini et al., 2009a). In particular, a lower AEA level has been demonstrated on the day of embryo transfer, along with a higher level at 4 and 5 weeks of gestation (the time of the pregnancy test), and a drop at 6 weeks (time of the first ultrasound scan) to values similar to those at the pregnancy test (Maccarrone et al., 2000; El-Talatini et al., 2009a; Taylor et al., 2011). Consistent with these studies on human plasma, an analysis of ECS in peripheral blood mononuclear cells during human menstrual cycles showed the highest FAAH activity and the lowest AEA concentrations on Day 21 compared with Day 7 and Day 14, a time point corresponding to the luteal phase and the putative window of uterine receptivity for implantation (Lazzarin et al., 2004). Conversely, serum AEA levels measured in asymptomatic women at 6–10 weeks of gestation have been reported to be the same in those who miscarried and those who did not (Tong et al., 2012). It should be noted that differences in sample processing (e.g. frozen samples versus fresh samples, and serum versus plasma) may have contributed to these divergent results (Tong et al., 2012).

Moreover, AEA measurements have also been performed during early pregnancy, showing no difference in the first (0.91 ± 0.28 nM) and second (0.91 ± 0.30 nM) trimesters with respect to the levels measured in the luteal phase of the menstrual cycle; instead, AEA levels are significantly elevated (1.48 nM) in women with non-viable first trimester pregnancies compared with the values (1.21 nM) found in confirmed viable pregnancies (Lam et al., 2008; Taylor et al., 2011). In the viable pregnancies, high AEA levels apparently correlate with low levels of P (Maccarrone et al., 2003a, b), and are possibly associated with

implantation failure and aberrant development of the fetomaternal interface, culminating overall in miscarriage. Furthermore, AEA levels in women with non-viable first trimester pregnancies are similar to those found in the follicular phase (Lazzarin et al., 2004; El-Talatini et al., 2010; Taylor et al., 2011). No significant association has been reported between AEA and P levels in plasma at the time of implantation or during early pregnancy, or in normally cycling women (El-Talatini et al., 2009a, b). However, a positive correlation between E_2 and AEA was found during the menstrual cycle of healthy women and in non-pregnant women after IVF and embryo transfer (El-Talatini et al., 2009a, b, 2010). In addition, an increase in plasma AEA levels has been observed in women during active labor, suggesting a role for this eCB also in the final phase of pregnancy (Habayeb et al., 2004; Lam et al., 2008). In women spontaneously laboring at term, plasma AEA levels were ~ 4 -fold higher than the levels in non-laboring women at term (Habayeb et al., 2004). This latter observation was confirmed by an independent study (Nallendran et al., 2010), where a ~ 1.5 -fold increase in the levels of laboring versus non-laboring subjects was documented. Incidentally, the smaller increase observed in the latter study might be due to a different mechanism of labor (induced versus spontaneous), and to a different method of plasma analysis (Nallendran et al., 2010). In this context, it should be noted that AEA undergoes spatiotemporal distribution specific changes, in order to support pregnancy onset: during the early stage, at the implantation site, low levels are needed to promote uterine receptivity and maintenance of pregnancy, while at the time of labor, high levels of AEA may be useful for parturition, probably because its hydrolysis releases arachidonic acid, which in turn increases the concentration of prostaglandins (Di Marzo and Petrosino, 2007; Mitchell et al., 2008). These fluctuations of AEA content are schematically depicted in Fig. 3. Moreover, as already shown in mouse models, COX-2 might be involved in the regulation of AEA content in humans, in order to guarantee normal implantation and then preservation of pregnancy (Yu et al., 1997; Kozak et al., 2002). In particular, AEA oxygenation by COX-2 at implantation sites would produce prostamides, which can be essential for processes such as ovulation, fertilization, implantation and decidualization, by analogy with classical prostanoids (Lim et al., 1997). Interestingly, as CB_1 is expressed in placental villi of women undergoing elective Cesarean section, it can be suggested that maternal AEA may maintain uterine quiescence through this receptor subtype, by producing myometrial relaxant factors like nitric oxide and gonadotrophin-releasing factor (Acone et al., 2009). eCBs seem to be involved also in early pregnancy complications, since higher levels of AEA have been found in Fallopian tubes of pregnant women compared with non-pregnant luteal phase controls (Gebeh et al., 2012). Furthermore, plasma samples obtained from women with ectopic pregnancies exhibit a decreased FAAH activity compared with normally pregnant controls, which leads to higher AEA levels (Gebeh et al., 2013a). Surprisingly, also the plasma concentrations of other eCBs (i.e. OEA and PEA), measured by UPLC-MS/MS, were found to be elevated in ectopic pregnancy and *in vitro* studies showed that AEA and OEA, but not PEA, have a negative effect on the Fallopian tube cilia beat frequency (Gebeh et al., 2013a). It is generally accepted that OEA and PEA act as 'entourage' compounds, which potentiate the effects of eCBs at their receptor targets by indirectly inhibiting their degradation (Jonsson et al., 2001; Di Marzo and Petrosino, 2007; García Mdel et al., 2009). These data support a role for AEA and related eCBs in modulating tubal function in ectopic pregnancy (Gebeh et al., 2013a), though it cannot be ruled

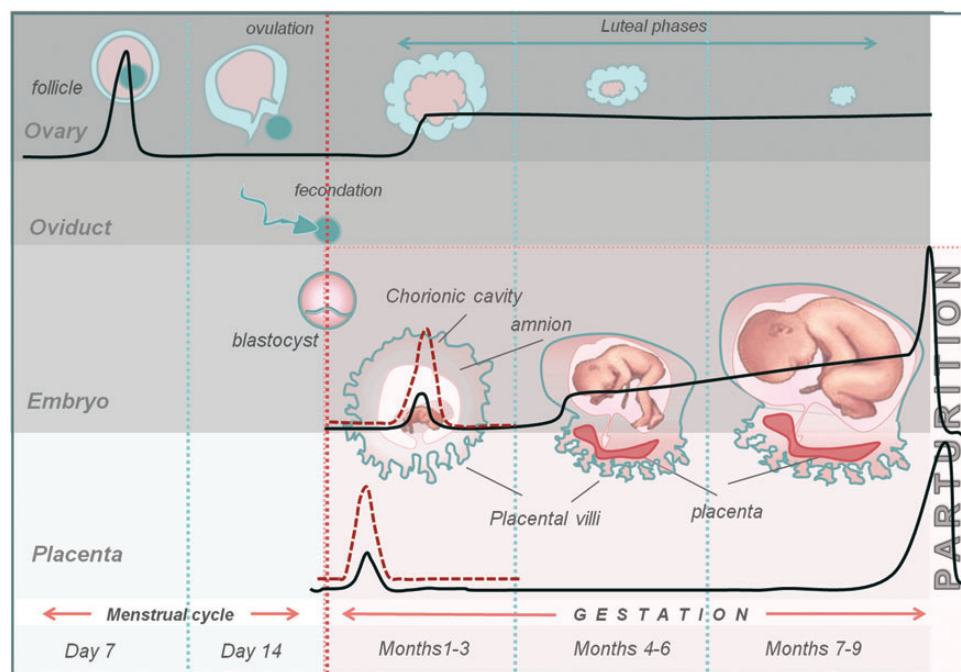


Figure 3 Fluctuations in AEA levels through the menstrual cycle and gestation. Under physiological conditions (solid line), higher AEA plasma levels in the follicular phase and lower concentrations in the luteal phase of the menstrual cycle, as well as at the beginning of implantation, are required to ensure the successful outcome of pregnancy. During early pregnancy, low levels of AEA, with respect to the levels measured in the luteal phase of the menstrual cycle, are needed to promote uterine receptivity and pregnancy maintenance. Finally, high AEA levels in the placenta at term and at the time of labor may be necessary for parturition. Under pathological conditions (dashed line), AEA levels are increased in the placenta obtained from pre-eclampsia patients, and in ectopic or non-viable pregnancies, as well as in lymphocytes from women who miscarry. AEA, anandamide.

out that high levels of plasma AEA are more generally associated with defects in uterine wall implantation. In this context, it has been clearly documented in mouse models, but not yet in humans, that different ECS elements play a major role in regulating blastocyst development, in order to guarantee successful implantation in the uterus (Paria *et al.*, 1998; Liu *et al.*, 2002; El-Talatini *et al.*, 2009b; Maccarrone, 2009; Sun *et al.*, 2010; Taylor *et al.*, 2010). Indeed, the levels and activity of uterine AEA and FAAH, as well as of blastocyst CB₁ receptors and FAAH, are coordinately regulated to synchronize preimplantation development and uterine receptivity (Wang *et al.*, 2006b; Maccarrone, 2009).

eCB levels in the ovary and follicular fluid

Adverse effects of Δ^9 -tetrahydrocannabinol (THC, shown in Fig. 1C), the active principle of cannabis extracts like hashish and marijuana (Izzo *et al.*, 2009), are reported in folliculogenesis and ovulation, where this phytocannabinoid is associated with poor quality oocytes, and eventually anovulation and infertility (Nir *et al.*, 1973; Ayalon *et al.*, 1977). Also AEA, PEA and OEA have been quantified in follicular fluid retained following oocyte aspiration from women undergoing IVF treatment (Schuel *et al.*, 2002a). Recently, AEA measurements have been in the human ovary and follicular fluid, to demonstrate that AEA is produced by the granulosa of growing (i.e. secondary and tertiary) follicles, corpus luteum and corpus albicans, but not by oocytes (El-Talatini *et al.*, 2009b). On this basis, the authors suggested that AEA may play a role during the antral phase of folliculogenesis (El-Talatini *et al.*, 2009b). Interestingly, AEA measured in the follicular fluid obtained

from women undergoing controlled ovarian hyperstimulation for IVF/ICSI was higher in follicles with mature oocytes than in those with immature oocytes (1.56 ± 0.11 versus 0.99 ± 0.09 nM) (El-Talatini *et al.*, 2009b). Yet, receiver operating characteristic analysis, which allows the visualization and analysis of the behaviors of diagnostic systems (Fawcett, 2006), revealed that a concentration of AEA of 1.09 nM in follicular fluid was predictive of mature oocytes in 77% of the cases, supporting the hypothesis that AEA in follicular and oviductal fluids may be involved in oocyte maturity (Schuel *et al.*, 2002a; El-Talatini *et al.*, 2009b). This effect could probably occur through the CB₂ receptors, which were indeed localized by immunohistochemical analysis in oocytes of tertiary follicles, but not in those at other stages of development (El-Talatini *et al.*, 2009b). Since other ECS components have been identified in the rat ovarian medulla and cortex, eCB signaling could also be involved in the regulation of follicular maturation and development in humans (Bagavandoss and Grimshaw, 2010).

eCBs at the maternal–fetal interface

AEA has also been quantified by advanced methodologies in human cord and maternal blood, amniotic fluid, placenta and fetal membranes collected during Cesarean section (Marczylo *et al.*, 2010). Higher AEA levels were found in freshly processed placenta (2.72 ± 1.04 pmol/g of tissue) than in fetal membranes (1.19 ± 0.63 pmol/g of tissue) (Marczylo *et al.*, 2010), where a consistently higher FAAH expression was demonstrated (Park *et al.*, 2003). In this context, it should be noted that AEA concentrations, in the human brain as well as in human

plasma, may increase due to repeated freeze-thaw cycles or delays in tissue processing (Vogeser et al., 2006; Palkovits et al., 2008). Therefore, it is crucial to strictly control the experimental procedures, in order to avoid large fluctuations in AEA levels. In addition, CB₂ but not CB₁ expression has been found in human placental macrophages during the first trimester (Helliwell et al., 2004). As placental tissues from spontaneously miscarrying women are characterized by very low FAAH levels and high CB₁ expression in trophoblastic cells (Acone et al., 2009; Trabucco et al., 2009), increased FAAH expression (Habayeb et al., 2008b) and consequently reduced AEA levels in the placenta in the early stages of pregnancy may be associated with a better pregnancy maintenance (Habayeb et al., 2008b). Therefore, FAAH may have a protective role for the placental barrier between fetal and maternal blood cells, by decreasing circulating maternal AEA (Helliwell et al., 2004; Trabucco et al., 2009). Consequently, the fetus is exposed to changes in AEA levels during its development within the uterus: these levels are low at the beginning, but then become high in the placenta at term. In addition, higher AEA levels in the umbilical vein (0.88 ± 0.33 nM) compared with the artery (0.77 ± 0.30 nM) suggest that there may be a transport across the placenta and/or a biosynthesis of AEA by the placenta itself (Marczylo et al., 2010). Incidentally, it should be noted that conflicting data have been reported on AEA concentrations in amniotic fluid, varying from 0.02–0.18 nM (Marczylo et al., 2010) to 8 nM (Schuel et al., 2002a). This is likely due to different gestational ages and sample collection procedures between the two studies. AEA seems to be produced also by human placenta, where higher and lower expression of NAPE-PLD and FAAH, respectively, were observed in pre-eclampsia compared with normotensive women, and might possibly contribute to fetus damage (Abán et al., 2013). Also the newborn is exposed to eCBs, and indeed from the day after delivery, the mother produces human milk with 2-AG concentrations (~ 1 μ M) that are ~ 125 -fold higher than those of AEA (~ 8 nM) (Di Marzo et al., 1998). This pioneering study was performed by GC-MS analysis, and was extended later on through more sophisticated methodologies (Table II). LC-MS and UPLC-MS/MS showed that indeed human milk contains different *N*-acylethanolamines in the nanomolar range: 0.1–5.0 nM for AEA, 2.0–67.0 nM for OEA and 9.0–23.0 nM for PEA (Schuel et al., 2002a; Lam et al., 2010). Collectively, available data suggest a positive role for eCBs in milk intake by the newborn.

Overall, the positive or negative effects of eCBs depend on the site of action and on the duration of exposure, as well as on the spatiotemporal expression patterns of the key synthetic/hydrolytic enzymes and target receptors of these substances. Available literature data reviewed here suggest that AEA levels in plasma of pregnant women might be considered as a diagnostic biomarker for natural or assisted pregnancy outcome. They also suggest that modulating the ECS could potentially be useful as a therapeutic alternative to prevent preterm labor. By using a specific cutoff of AEA levels, also in combination with other widely accepted biomarkers (e.g. P or hCG), diagnostic tests on whole blood could also deliver more reliable information on the risk of miscarriage.

eCBs in the male reproductive tract

The involvement of eCBs in human male reproductive events was recognized shortly after the identification of these bioactive lipids (Schuel et al.,

2002a). Since then, eCBs have been quantified in seminal plasma and human sperm cells (Francavilla et al., 2009; Marczylo et al., 2009; Amoako et al., 2010, 2013). Much like boar sperm cells, where a complete ECS was demonstrated for the first time (Maccarrone et al., 2005), human sperm cells have been shown to express CB₁ (Rossato et al., 2005; Aquila et al., 2009), CB₂ (Agirregoitia et al., 2010) and TRPV1, along with all major components of the ECS needed to synthesize (NAPE-PLD) and degrade (EMT and FAAH) AEA (Francavilla et al., 2009). Interestingly, ECS elements are expressed differently in distinct sperm segments: NAPE-PLD and FAAH are localized in the post-acrosomal region and in the midpiece; CB₁ is present in the plasma membrane over the acrosomal region, in the middle region and along the tail; CB₂ is found in the plasma membrane at the sperm head; and finally TRPV1 is restricted to the post-acrosomal region (Francavilla et al., 2009; Agirregoitia et al., 2010). The location of different ECS components in the human sperm cell is represented in Fig. 4. These immunocytochemistry data support functional and pharmacological studies, which document a different role for CB₁, CB₂ and TRPV1 receptors in the complex process of fertilization (Maccarrone, 2009, 2013).

eCBs in the regulation of sperm functions

The binding of AEA to CB₁ and/or CB₂ receptors seems relevant for the acquisition of sperm fertilizing ability, both in invertebrates (Schuel et al., 1994), vertebrates (Cobellis et al., 2006, 2010; Cacciola et al., 2008; Sun et al., 2010) and humans (Rossato et al., 2005; Agirregoitia et al., 2010). The control of sperm motility, as well as the induction of the acrosome reaction (AR), has been ascribed to CB₁ activation (Schuel et al., 2002b; Rossato et al., 2005; Aquila et al., 2010a; Barbonetti et al., 2010), although more recently also a role for CB₂ has been documented (Agirregoitia et al., 2010). Indeed, motility analysis on semen samples incubated with specific agonists or antagonists of CB₁ and CB₂ demonstrated that the distinct activation of these receptors modulates the proportion of motile sperm cells, with CB₁ increasing the percentage of

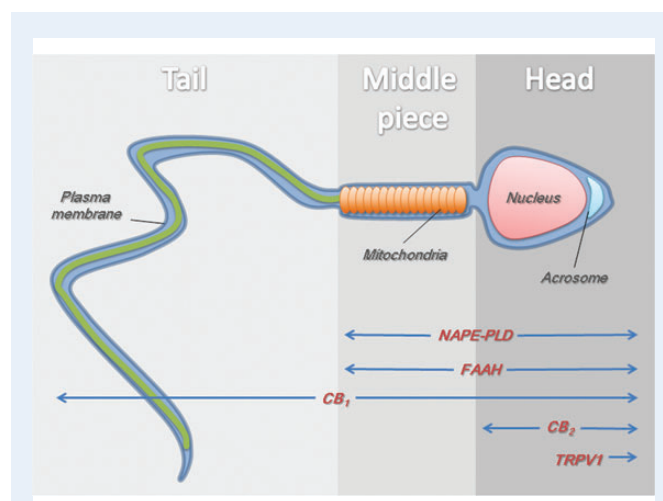


Figure 4 Schematic drawing of the localization of endocannabinoid system (ECS) elements in the human sperm cell. Abbreviations: NAPE-PLD, *N*-arachidonoylphosphatidylethanolamine-specific phospholipase D; FAAH; fatty acid amide hydrolase; CB_{1/2}, type-1 or 2 cannabinoid receptor; TRPV1, transient receptor potential vanilloid type 1.

immobile cells and reducing the proportion of rapidly progressive sperm cells in favor of slow, sluggish sperm cells (Agirreagoitia *et al.*, 2010).

Sperm motility is directly related to mitochondrial function, which in turn is connected to mechanisms of energy depletion, possibly due to deficits in mitochondrial oxidative phosphorylation (Rossato, 2008; Badawy *et al.*, 2009) or to glycolysis blockage (Barbonetti *et al.*, 2010). In this context, it has been suggested that AEA inhibits sperm mitochondrial activity in a dose-dependent manner (Rossato *et al.*, 2005), and that the presence of CB₁ in the midpiece of human sperm cells, where mitochondria are localized (Aquila *et al.*, 2010b), affects their motility by decreasing the mitochondrial transmembrane potential in a non-apoptotic manner (Barbonetti *et al.*, 2010). TRPV1 receptors were identified in the testis from rats (Stein *et al.*, 2004), but as yet not from humans. In general, the latter family of channel receptors may be involved in regulating calcium-dependent functions of mammalian sperm cells, including motility, capacitation and AR (Kumar and Shoeb, 2011). They might also be involved in controlling human sperm/oocyte fusion (Francavilla *et al.*, 2009). Indeed, functional studies based on capsazepine, a selective antagonist of TRPV1, demonstrated a marked reduction of the ability of sperm cells to fuse with oocytes in the presence of P, and a reduction of the P-induced AR rate (Francavilla *et al.*, 2009). Interestingly, the responsiveness to P was restored by using a specific EMT inhibitor, which was able at the same time to prevent the effect of capsazepine (Francavilla *et al.*, 2009).

The levels of expression of CB₁ and CB₂ receptor subtypes and of TRPV1, as well as their distinct compartmentalization in sperm cells, may critically regulate sperm function. Also, the content of eCBs in the male reproductive tract may differentially activate these molecular targets, thus affecting the different steps of fertilization.

eCBs and other peripheral factors involved in reproduction

Besides the well-known direct effects of eCBs in fertility, ECS elements are also known to interact with sex steroid hormones and cytokines, thus indirectly regulating these complex processes (Karasu *et al.*, 2011; Bambang *et al.*, 2012). Sex steroid hormones (i.e. P, E₂, luteinizing hormone, FSH and testosterone) are the main factors involved in fertility; more recently also leptin, an hormone that helps the body to regulate fat accumulation, has been added to the list, although its role remains unclear (Karasu *et al.*, 2011; Ahrens *et al.*, 2013). P up-regulates lymphocyte FAAH activity through the transcription factor, Ikaros, leading to decreased AEA levels (Maccarrone *et al.*, 2001, 2003a, b). An indirect correlation between E₂ and eCB tone was also documented in human endothelial cells, where enhanced AEA levels, due to increased NAPE-PLD and decreased FAAH activities, may modulate the cardiovascular and immune systems (Maccarrone *et al.*, 2002b). Crosstalks between the endocrine and immune systems are known to regulate a large number of biological processes, with a basic role in implantation (Sen *et al.*, 2014). Several immune cells (i.e. macrophages and T cells) and signaling/regulatory molecules (i.e. hormones, cytokines and growth factors) play functional roles during the establishment of pregnancy (Karasu *et al.*, 2011). Endometrial and trophoblast cells, as well as peripheral leukocytes and natural killer (NK) cells, represent a source of cytokines that exert a widespread regulation of basic cellular functions, like proliferation and differentiation (Lee *et al.*, 2011).

Type-1 helper (Th1) and type-2 helper (Th2) cytokines derived from peripheral T lymphocytes act with opposite effects on trophoblast growth, depending on the balance and timing of their production. Th1 cytokines are anti-fertility factors that stimulate NK cells and enhance tumor necrosis factor- α (TNF- α) secretion from macrophages, whereas Th2 cytokines are pro-fertility factors that act through the suppression of NK cells activity and the stimulation of natural suppressor cells (Piccinni, 2010; Lee *et al.*, 2011; Battista *et al.*, 2012). Leukemia inhibitory factor (LIF), a member of the interleukin (IL)-6 family, plays important roles in the immune and hematopoietic systems, and is also essential for reproduction (Smith *et al.*, 1998; Aghajanova, 2004). A relationship between reduced LIF expression and recurrent miscarriage has been shown in women (Piccinni *et al.*, 1998; Taupin *et al.*, 1999), suggesting that this cytokine is critical for implantation and pregnancy maintenance in humans (Ahima and Flier, 2000; Maccarrone and Wenger, 2005). LIF levels have been investigated as predictive markers of successful embryo implantation, since they decrease in the late luteal phase of the menstrual cycle (Laird *et al.*, 1997; Sharkey *et al.*, 1999), and in secretory phase endometrium of patients with infertility (Wu *et al.*, 2013). Interestingly, eCBs have been demonstrated to increase the production of IL-1, IL-4, IL-6 and IL-10 (Derocq *et al.*, 2000; Kishimoto *et al.*, 2004), and to inhibit the release of TNF- α and interferon- γ from human lymphocytes (Klein *et al.*, 2004; Cencioni *et al.*, 2010). Moreover, it is known that high levels of AEA in blood inhibit the release of LIF via CB₁, culminating in pregnancy failure (Maccarrone *et al.*, 2001). In this context, it has been demonstrated that IL-4 and IL-10 enhance FAAH activity, which

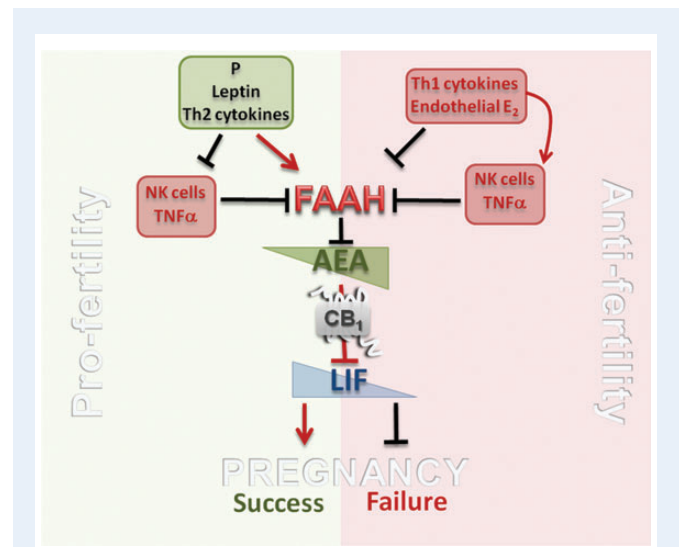


Figure 5 High levels of LIF and low levels of AEA are essential for successful pregnancy. AEA reduces LIF release via CB₁ receptors. P and leptin decrease AEA levels by up-regulating the FAAH promoter, and hence FAAH expression and activity. Instead, anti-fertility Th1 cytokines increase AEA levels by inhibiting FAAH, and additionally they potentiate NK cells and TNF α production. Pro-fertility Th2 cytokines potentiate FAAH activation by P, and inhibit NK cells and TNF α secretion. Finally, endothelial E₂ increases AEA levels, by reducing FAAH activity. Abbreviations: LIF, leukemia inhibitory factor; AEA, anandamide; CB₁, type-1 cannabinoid receptor; P, progesterone; FAAH, fatty acid amide hydrolase; Th, T-helper; NK, natural killer; TNF α , tumor necrosis factor α ; E₂, estrogen.

instead is inhibited by IL-2 and IL-12, leading to decreased or increased AEA levels, respectively (Maccarrone and Finazzi-Agrò, 2004). Consistently, defective FAAH in peripheral blood has been proposed as a diagnostic marker of human infertility (Maccarrone et al., 2000). The effects on pregnancy outcome due to cytokines-hormones-AEA networks are summarized in Fig. 5.

In plasma, the leptin content correlates with P levels during the luteal phase of the menstrual cycle, and with hCG concentrations during human pregnancy (Hardie et al., 1997). Recent studies have shown that obese women undergoing IVF treatment have a lower conception rate (Wang et al., 2000; Fedorcsák et al., 2004) and higher risk of miscarriage (Fedorcsák et al., 2000; Wang et al., 2002). In line with this, it has been demonstrated that there is a different regulation of eCBs in maternal fat and placental tissue, depending on maternal obesity. Indeed, in obese mothers increased AEA was observed in the subcutaneous fat, and decreased 2-AG was observed in the placenta, leading to the hypothesis that both eCBs may exert a distinct control during fetal development (Brocato et al., 2013). In addition, AEA levels are also indirectly controlled by leptin, which up-regulates the FAAH promoter via signal transducer and activator of transcription 3 (STAT3), and concomitantly

reduces AEA levels in T cells (Maccarrone et al., 2003a). Moreover, alterations of leptin levels have been found in the ovulatory and luteal phases of women of reproductive age (Ajala et al., 2013), overall supporting a link between obesity, eCBs, leptin, sex hormones and fertility (Linne, 2004; Henson and Castracane, 2006; Metwally and Ledger, 2008).

Clinical relevance of eCBs in female and male fertility

eCBs levels may be altered not only in pregnancy disorders, but also under some pathological conditions that affect the uterus, such as endometritis (Iuvone et al., 2008), and in some types of female reproductive cancers (Guida et al., 2010). Indeed, it has been reported that the levels of 2-AG, but not of AEA, are elevated in biopsies from women affected by endometrial carcinoma, as a result of decreased expression of MAGL (Guida et al., 2010). In parallel, increased 2-AG and up-regulated CB₂ receptors counteract endometrial carcinoma growth in human endometrioma (Guida et al., 2010). However plasma eCB levels, measured by

Table III ECS elements and AEA as biomarkers of human reproduction.

Reproductive cells, tissues and fluids	AEA levels	Other ECS elements	Outcome
Blood			
Lymphocytes		↓FAAH	Miscarriage
Plasma			
Menstrual cycle	↑ follicular phase ↓ luteal phase	↓FAAH	Uterine receptivity
Early pregnancy	↓		Progression of pregnancy and/or embryo transfer
Labor	↓		Parturition
Early pregnancy complications	↑	↑ OEA, ↑ PEA ↓ FAAH	Ectopic pregnancy
Placenta			
Early pregnancy	↓	↑ FAAH ↓ CB ₁	Maintenance of pregnancy
'At term' pregnancy	↑	↑ NAPE-PLD, ↓FAAH ↑ CB ₁	Parturition Pre-eclampsia Placental development
Follicles (secondary and tertiary)	↑	↑ CB ₂	Folliculogenesis Oocytes maturation
Follicular fluid	↑	? OEA, ? PEA	Follicles/oocytes maturation
Amniotic fluid	↑	? OEA, ? PEA	Supply of oxygenated and nutrient-rich blood to the fetus through the umbilical vein
Sperm cells	↑	↓ CB ₁ , ↑ CB ₂ ↑ TRPV1 ↓ TRPV1	Acquisition of fertilizing ability Sperm-oocyte fusion Sperm infertility
Seminal plasma			
Normozoospermia	↑	? OEA, ? PEA	Regulation of sperm reproductive functions
Asthenozoospermia and oligoasthenoteratozoospermia	↓	↓ CB ₁	Alteration of physiological sperm cells kinematic parameters
Idiopathic infertility	↓		Reduction of sperm ability to penetrate an oocyte

FAAH, fatty acid amide hydrolase; GEA, N-oleoylethanolamide; PEA, N-palmitoyl ethanolamine; CB_{1/2}, type-1 or 2 cannabinoid receptor; NAPE-PLD, N-arachidonylphosphatidylethanolamine-specific phospholipase D; TRPV1, transient receptor potential vanilloid type 1.

UPLC-MS/MS, were found to be the same in women with hyperemesis gravidarum (HG), a condition whose aetiopathogenesis remains unknown, and normally pregnant subjects (Gebeh *et al.*, 2013b). Although eCBs were reported to modulate emesis (Mechoulam and Parker, 2013), both in humans and in animal models, these findings seem to rule out their involvement in HG.

On the male side, the evaluation of eCB content in human sperm cells and/or in seminal plasma could be a novel diagnostic tool for reproductive medicine. The concentrations of AEA in seminal plasma of normozoospermic men range from ~ 0.20 nM (Amoako *et al.*, 2010, 2013) to 13–26 nM (Schuel *et al.*, 2002a; Lewis and Maccarrone, 2009; Lewis *et al.*, 2012). In line with this, we have recently reported a marked reduction of AEA (26.4 ± 3.6 versus 7.3 ± 1.2 nM) and 2-AG (218.8 ± 55.4 versus 56.7 ± 14.1 nM) content in infertile seminal plasma, paralleled by increased degradation in infertile versus fertile semen samples (Lewis *et al.*, 2012). However, no significant alterations were found in infertile versus fertile sperm cells (0.9 ± 0.3 versus 0.8 ± 0.1 pmol/mg of protein for AEA; 37.9 ± 9.2 versus 31.3 ± 6.8 pmol/mg of protein for 2-AG). Instead, we observed a marked decrease in TRPV1 binding in infertile versus fertile sperm cells (Lewis *et al.*, 2012), further supporting a major role for this ion channel in sperm function (Maccarrone, 2013). On this basis, we might speculate that the reduction of AEA causes infertile sperm cells to lose their quiescent state, and with that the ability to prevent premature capacitation. This condition could then precipitate a premature AR, reducing the ability of the sperm cell to penetrate an oocyte *in vivo*, as well as in IVF. These findings have been lately strengthened by a clinical study performed on men affected by asthenozoospermia and oligoasthenoteratozoospermia (Amoako *et al.*, 2013). Here, AEA levels in seminal plasma, measured by UPLC-MS, were found to be almost halved in patients with respect to normal subjects (~ 0.08 nM versus ~ 0.20 nM). These differences in AEA content in men with different pathological semen subtypes were associated with poor semen quality, such as decreased sperm count and abnormal sperm motility, and also with alterations of CB₁ transcription (Amoako *et al.*, 2013). Besides AEA, also PEA might play a role in male infertility. The presence of this compound in male reproductive tract might modulate plasma membrane polarity, with an effect on Ca²⁺ influx during the capacitation process (Ambrosini *et al.*, 2003). Additionally, PEA might affect some kinematic parameters of sperm cells (i.e. their motility), and might act on the development of hyperactivation during capacitation, leading to idiopathic infertility (Ambrosini *et al.*, 2005). Collectively, these data pinpoint eCBs (and in particular AEA) as potential new biomarkers that may be used to evaluate male reproductive defects, thus opening new avenues for the treatment of infertility in humans.

Conclusions

In this review, we have discussed human studies on the assay of eCB content in female and male reproductive tracts (cells, tissues and fluids), focusing our attention on how endogenous AEA tone might exert its function in regulating different reproductive events, from oocyte and follicle maturation, and normal and pathological pregnancy, to sperm capacitation, motility and fusion with the oocyte. In females, the levels of eCBs have been reported from different stages of follicular development to the gestational period. In males, ECS components were identified in human sperm cells and seminal plasma, but the

endogenous tone of eCBs remains to be addressed at different stages of gametogenesis.

Keeping in mind that fertilization fails in up to 10% of IVF cycles (Lewis *et al.*, 2012), available data might point to AEA and other ECS elements as new candidate biomarkers for infertility, and for devising strategies for fertility preservation under normal and pathological conditions (Table III).

The identification of AEA as a potential biomarker to be exploited to determine pregnancy outcome and sperm fertilizing ability appears to hold some potential for reproductive health. Overall, assessing the content of eCBs as biomarkers in female and male reproductive tracts may be an addition to the assays of conventional hormones (e.g. P and hCG) and to semen analyses. On a final note, assays of FAAH activity/expression and of AEA content in peripheral blood offer the advantage of being routinely performed in easily accessible cells, by means of high throughput techniques like radiochromatography/enzyme-linked immunosorbent assays, and LC-MS/UPLC-MS/MS. Therefore, these analyses have the potential to be useful in predicting impaired sperm fertilizing ability as well as the outcome of natural and/or assisted reproduction in pregnant women and in pregnancy complications. However further quantitative research of their sensitivity and specificity for predicting the various fertility defects is required.

Authors' roles

All authors conceived the topic of this study, and were involved in the drafting of the manuscript and figures. M.M. revised and approved the final version.

Funding

This investigation was partly supported by Ministero dell'Istruzione, dell'Università e della Ricerca (grant PRIN 2010–2011 to M.M.).

Conflict of interest

All authors have no conflicts of interest to declare.

References

- Abán C, Leguizamón GF, Cella M, Damiano A, Franchi AM, Farina MG. Differential expression of endocannabinoid system in normal and preeclamptic placentas: effects on nitric oxide synthesis. *Placenta* 2013;**34**:67–74.
- Abdelazim IA. Fetal fibronectin (Quick Check fFN test®) for detection of premature rupture of fetal membranes. *Arch Gynecol Obstet* 2013;**287**:205–210.
- Achache H, Revel A. Endometrial receptivity markers, the journey to successful embryo implantation. *Hum Reprod Update* 2006;**12**:731–746.
- Acone G, Trabucco E, Colacurci N, Cobellis L, Mackie K, Meccariello R, Cacciola G, Chioccarelli T, Fasano S, Pierantoni R *et al.* Low type I cannabinoid receptor levels characterize placental villous in labouring delivery. *Placenta* 2009;**30**:203–205.
- Agarwal A, Said TM. Role of sperm chromatin abnormalities and DNA damage in male infertility. *Hum Reprod Update* 2003;**9**:331–345.
- Aghajanova L. Leukemia inhibitory factor and human embryo implantation. *Ann N Y Acad Sci* 2004;**1034**:176–183.
- Agirregoitia E, Carracedo A, Subirán N, Valdivia A, Agirregoitia N, Peralta L, Velasco G, Irazusta J. The CB(2) cannabinoid receptor regulates human sperm cell motility. *Fertil Steril* 2010;**93**:1378–1387.
- Ahima RS, Flier JS. Adipose tissue as an endocrine organ. *Trends Endocrinol Metab* 2000;**1**:327–332.

- Ahmadi A, Ng SC. Fertilizing ability of DNA-damaged spermatozoa. *J Exp Zool* 1999; **284**:696–704.
- Ahrens K, Mumford SL, Schliep KC, Kissell KA, Neil MD, Perkins J, Wactawski-Wende J, Schisterman EF. Serum leptin levels and reproductive function during the menstrual cycle. *Am J Obstet Gynecol* 2013; in press. doi: 10.1016/j.ajog.2013.11.009.
- Aitken RJ. Human spermatozoa: revelations on the road to conception. *FI000Prime Rep* 2013; **5**:39.
- Ajala OM, Ogunro PS, Elusanmi GF, Ogunyemi OE, Bolarinde AA. Changes in serum leptin during phases of menstrual cycle of fertile women: relationship to age groups and fertility. *Int J Endocrinol Metab* 2013; **11**:27–33.
- Altman DG, McShane LM, Sauerbrei W, Taube SE. Reporting Recommendations for Tumor Marker Prognostic Studies (REMARK): explanation and elaboration. *PLoS Med* 2012; **9**:e1001216.
- Ambrosini A, Zolese G, Wozniak M, Genga D, Boscaro M, Mantero F, Balercia G. Idiopathic infertility: susceptibility of spermatozoa to *in-vitro* capacitation, in the presence and the absence of palmitylethanolamide (a homologue of anandamide), is strongly correlated with membrane polarity studied by Laurdan fluorescence. *Mol Hum Reprod* 2003; **9**:381–388.
- Ambrosini A, Zolese G, Ambrosi S, Bertoli E, Mantero F, Boscaro M, Balercia G. Idiopathic infertility: effect of palmitylethanolamide (a homologue of anandamide) on hyperactivated sperm cell motility and Ca²⁺ influx. *J Androl* 2005; **26**:429–436.
- Amoako AA, Marczylo TH, Lam PM, Willets JM, Derry A, Elson J, Konje JC. Quantitative analysis of anandamide and related acylethanolamides in human seminal plasma by ultra performance liquid chromatography tandem mass spectrometry. *J Chromatogr B Analyt Technol Biomed Life Sci* 2010; **878**:3231–3237.
- Amoako AA, Marczylo TH, Marczylo EL, Elson J, Willets JM, Taylor AH, Konje JC. Anandamide modulates human sperm motility: implications for men with asthenozoospermia and oligoasthenoteratozoospermia. *Hum Reprod* 2013; **28**:2058–2066.
- Aquila S, Guido C, Laezza C, Santoro A, Pezzi V, Panza S, Andò S, Bifulco M. A new role of anandamide in human sperm: focus on metabolism. *J Cell Physiol* 2009; **221**:147–153.
- Aquila S, Guido C, Santoro A, Gazzo P, Laezza C, Baffa MF, Andò S, Bifulco M. Rimobant (SR141716) induces metabolism and acquisition of fertilizing ability in human sperm. *Br J Pharmacol* 2010a; **159**:831–841.
- Aquila S, Guido C, Santoro A, Perrotta I, Laezza C, Bifulco M, Sebastiano A. Human sperm anatomy: ultrastructural localization of the cannabinoid I receptor and a potential role of anandamide in sperm survival and acrosome reaction. *Anat Rec* 2010b; **293**:298–309.
- Arck P, Hansen PJ, Mulac Jericevic B, Piccinni MP, Szekeres-Bartho J. Progesterone during pregnancy: endocrine-immune cross talk in mammalian species and the role of stress. *Am J Reprod Immunol* 2007; **58**:268–279.
- Ayalon D, Nir I, Cordova T, Bauminger S, Puder M, Naor Z, Kashi R, Zor U, Harell A, Lindner HR. Acute effect of delta1-tetrahydrocannabinol on the hypothalamo-pituitary-ovarian axis in the rat. *Neuroendocrinology* 1977; **23**:31–42.
- Badawy ZS, Chohan KR, Whyte DA, Penefsky HS, Brown OM, Souid AK. Cannabinoids inhibit the respiration of human sperm. *Fertil Steril* 2009; **91**:2471–2476.
- Bagavandoss P, Grimshaw S. Temporal and spatial distribution of the cannabinoid receptors (CB1, CB2) and fatty acid amide hydroxylase in the rat ovary. *Anat Rec (Hoboken)* 2010; **293**:1425–1432.
- Bambang KN, Lambert DG, Lam PMW, Quenby S, Maccarrone M, Konje JC. Immunity and early pregnancy events: are endocannabinoids the missing link? *J Reprod Immunol* 2012; **96**:8–18.
- Barash A, Dekel N, Fieldust S, Segal I, Schechtman E, Granot I. Local injury to the endometrium doubles the incidence of successful pregnancies in patients undergoing *in vitro* fertilization. *Fertil Steril* 2003; **79**:1317–1322.
- Barbonetti A, Vassallo MR, Fortunato D, Francavilla S, Maccarrone M, Francavilla F. Energetic metabolism and human sperm motility: impact of CB₁ receptor activation. *Endocrinology* 2010; **151**:5882–5892.
- Bari M, Battista N, Pirazzi V, Maccarrone M. The manifold actions of endocannabinoids on female and male reproductive events. *Front Biosci* 2011; **16**:498–516.
- Barnhart KT, Sammel MD, Appleby D, Rausch M, Molinaro T, Van Calster B, Kirk E, Condous G, Van Huffel S, Timmerman D et al. Does a prediction model for pregnancy of unknown location developed in the UK validate on a US population? *Hum Reprod* 2010; **25**:2434–2440.
- Battista N, Meccariello R, Cobellis G, Fasano S, Di Tommaso M, Pirazzi V, Konje JC, Pierantoni R, Maccarrone M. The role of endocannabinoids in gonadal function and fertility along the evolutionary axis. *Mol Cell Endocrinol* 2012; **355**:1–14.
- Battista N, Sergi M, Montesano C, Napoletano S, Compagnone D, Maccarrone M. Analytical approaches for the determination of phytocannabinoids and endocannabinoids in human matrices. *Drug Test Anal* 2014; **6**:7–16.
- Belo L, Santos-Silva A, Rumley A, Lowe G, Pereira-Leite L, Quintanilha A, Rebelo I. Elevated tissue plasminogen activator as a potential marker of endothelial dysfunction in pre-eclampsia: correlation with proteinuria. *BJOG* 2002; **109**:1250–1255.
- Bisogno T, Howell F, Williams G, Minassi A, Cascio MG, Ligresti A, Matias I, Schiano-Moriello A, Paul P, Williams EJ et al. Cloning of the first sn1-DAG lipase points to the spatial and temporal regulation of endocannabinoid signaling in the brain. *J Cell Biol* 2003; **163**:463–468.
- Brocato B, Zoerner AA, Janjetovic Z, Skobowiat C, Gupta S, Moore BM, Slominski A, Zhang J, Schenone M, Phinehas R et al. Endocannabinoid crosstalk between placenta and maternal fat in a baboon model (*Papio* spp.) of obesity. *Placenta* 2013; **34**:983–989.
- Buczynski MW, Parsons LH. Quantification of brain endocannabinoid levels: methods, interpretations and pitfalls. *Br J Pharmacol* 2010; **160**:423–442.
- Buffone MG, Ijiri TW, Cao W, Merdushev T, Aghajanian HK, Gerton GL. Heads or tails? Structural events and molecular mechanisms that promote mammalian sperm acrosomal exocytosis and motility. *Mol Reprod Dev* 2012; **79**:4–18.
- Cacciola G, Chioccarelli T, Ricci G, Meccariello R, Fasano S, Pierantoni R, Cobellis G. The endocannabinoid system in vertebrate male reproduction: a comparative overview. *Mol Cell Endocrinol* 2008; **286**:S24–S30.
- Cencioni MT, Chiurchiù V, Catanzaro G, Borsellino G, Bernardi G, Battistini L, Maccarrone M. Anandamide suppresses proliferation and cytokine release from primary human T-lymphocytes mainly via CB₂ receptors. *PLoS One* 2010; **5**:e8688.
- Cha J, Sun X, Dey SK. Mechanisms of implantation: strategies for successful pregnancy. *Nat Med* 2012; **18**:1754–1767.
- Chan HW, McKirdy NC, Peiris HN, Rice GE, Mitchell MD. The role of endocannabinoids in pregnancy. *Reproduction* 2013; **146**:101–109.
- Chicca A, Marazzi J, Nicolussi S, Gertsch J. Evidence for bidirectional endocannabinoid transport across cell membranes. *J Biol Chem* 2012; **287**:34660–34682.
- Chioccarelli T, Cacciola G, Altucci L, Lewis SE, Simon L, Ricci G, Ledent C, Meccariello R, Fasano S, Pierantoni R et al. Cannabinoid receptor 1 influences chromatin remodeling in mouse spermatids by affecting content of transition protein 2 mRNA and histone displacement. *Endocrinology* 2010; **151**:5017–5029.
- Cobellis G, Cacciola G, Scarpa D, Meccariello R, Chianese R, Franzoni MF, Mackie K, Pierantoni R, Fasano S. Endocannabinoid system in frog and rodent testis: type-1 cannabinoid receptor and fatty acid amide hydrolase activity in male germ cells. *Biol Reprod* 2006; **75**:82–89.
- Cobellis G, Ricci G, Cacciola G, Orlando P, Petrosino S, Cascio MG, Bisogno T, De Petrocellis L, Chioccarelli T, Altucci L et al. A gradient of 2-arachidonoylglycerol regulates mouse epididymal sperm cell start-up. *Biol Reprod* 2010; **82**:451–458.
- Cole LA, Kardana A, Seifer DB, Bohler HCL. Urine hCG b-subunit core fragment, a sensitive test for ectopic pregnancy. *J Clin Endocrinol Metab* 1994; **78**:497–499.
- Cowan BD, Vandermolen DT, Long CA, Whitworth NS. Receiver operator characteristic, efficiency analysis, and predictive value of serum progesterone concentration as a test for abnormal gestations. *Am J Obstet Gynecol* 1992; **166**:1729–1737.
- Daponte A, Deligeorgiou E, Garas A, Pournaras S, Hadjichristodoulou C, Messinis IE. Activin A and follistatin as biomarkers for ectopic pregnancy and missed abortion. *Dis Markers* 2013; **35**:497–503.
- Das M, Holzer HE. Recurrent implantation failure: gamete and embryo factors. *Fertil Steril* 2012; **97**:1021–1027.
- Deroq JM, Jbilo O, Bouaboula M, Séguin M, Clère C, Casellas P. Genomic and functional changes induced by the activation of the peripheral cannabinoid receptor CB₂ in the promyelocytic cells HL-60. Possible involvement of the CB₂ receptor in cell differentiation. *J Biol Chem* 2000; **275**:15621–15628.
- Di Blasio AM, Vignali M, Gentilini D. The endocannabinoid pathway and the female reproductive organs. *J Mol Endocrinol* 2013; **50**:1–9.
- Diesch CH, Holzgreve W, Hahn S, Zhong XY. Comparison of activin A and cell-free fetal DNA levels in maternal plasma from patients at high risk for preeclampsia. *Prenat Diagn* 2006; **26**:1267–1270.
- Di Marzo V, De Petrocellis L. Endocannabinoids as regulators of transient receptor potential (TRP) channels: a further opportunity to develop new endocannabinoid-based therapeutic drugs. *Curr Med Chem* 2010; **17**:1430–1449.

- Di Marzo V, Petrosino S. Endocannabinoids and the regulation of their levels in health and disease. *Curr Opin Lipidol* 2007;**18**:129–140.
- Di Marzo V, Sepe N, De Petrocellis L, Berger A, Crozier G, Frideri E, Mechoulam R. Trick or treat from food endocannabinoids? *Nature* 1998;**396**:636–637.
- Dinh TP, Carpenter D, Leslie FM, Freund TF, Katona I, Sensi SL, Kathuria S, Piomelli D. Brain monoglyceride lipase participating in endocannabinoid inactivation. *Proc Natl Acad Sci USA* 2002;**99**:10819–10824.
- Domingues TS, Rocha AM, Serafini PC. Tests for ovarian reserve: reliability and utility. *Curr Opin Obstet Gynecol* 2010;**22**:271–276.
- El-Talatini MR, Taylor AH, Konje JC. Fluctuation in anandamide levels from ovulation to early pregnancy in *in-vitro* fertilization-embryo transfer women, and its hormonal regulation. *Hum Reprod* 2009a;**24**:1989–1998.
- El-Talatini MR, Taylor AH, Elson JC, Brown L, Davidson AC, Konje JC. Localisation and function of the endocannabinoid system in the human ovary. *PLoS One* 2009b;**4**:e4579.
- El-Talatini MR, Taylor AH, Konje JC. The relationship between plasma levels of the endocannabinoid, anandamide, sex steroids, and gonadotrophins during the menstrual cycle. *Fertil Steril* 2010;**93**:1989–1996.
- Fanelli F, Di Lallo VD, Belluomo I, De lasio R, Baccini M, Casadio E, Gasparini DI, Colavita M, Gambineri A, Grossi G et al. Estimation of reference intervals of five endocannabinoids and endocannabinoid related compounds in human plasma by two dimensional-LC/MS/MS. *J Lipid Res* 2012;**53**:481–493.
- Fassbender A, Vodolazka A, Saunders P, Lebovic D, Waelkens E, De Moor B, D'Hooghe T. Biomarkers of endometriosis. *Fertil Steril* 2013;**15**:1135–1145.
- Fawcett T. An introduction to ROC analysis. *Pattern Recognit Lett* 2006;**27**:861–874.
- Fedorcsák P, Storeng R, Dale PO, Tanbo T, Abyholm T. Obesity is a risk factor for early pregnancy loss after IVF or ICSI. *Acta Obstet Gynecol Scand* 2000;**79**:43–48.
- Fedorcsák P, Dale PO, Storeng R, Ertzeid G, Bjercke S, Oldereid N, Omland AK, Abyholm T, Tanbo T. Impact of overweight and underweight on assisted reproduction treatment. *Hum Reprod* 2004;**19**:2523–2528.
- Fezza F, De Simone C, Amadio D, Maccarrone M. Fatty acid amide hydrolase: a gate-keeper of the endocannabinoid system. *Subcell Biochem* 2008;**49**:101–132.
- Fonseca M, Correia-da-Silva G, Taylor AH, Lam PM, Marczylo TH, Bell SC, Konje JC, Teixeira NA. The endocannabinoid 2-arachidonoylglycerol (2-AG) and metabolizing enzymes during rat fetoplacental development: a role in uterine remodelling. *Int J Biochem Cell Biol* 2010;**42**:1884–1892.
- Fowler CJ. Transport of endocannabinoids across the plasma membrane and within the cell. *FEBS J* 2013;**280**:1895–1904.
- Francavilla F, Battista N, Barbonetti A, Vassallo MR, Rapino C, Antonangelo C, Pasquariello N, Catanzaro G, Barboni B, Maccarrone M. Characterization of the endocannabinoid system in human spermatozoa and involvement of transient receptor potential vanilloid 1 receptor in their fertilizing ability. *Endocrinology* 2009;**150**:4692–4700.
- Fu J, Bottegoni G, Sasso O, Bertorelli R, Rocchia W, Masetti M, Gujjarro A, Lodola A, Amirotti A, Garau G et al. A catalytically silent FAAH-I variant drives anandamide transport in neurons. *Nat Neurosci* 2011;**15**:64–69.
- García Mdel C, Adler-Graschinsky E, Celuch SM. Enhancement of the hypotensive effects of intrathecally injected endocannabinoids by the entourage compound palmitoylethanolamide. *Eur J Pharmacol* 2009;**610**:75–80.
- Gasperi V, Dainese E, Oddi S, Sabatucci A, Maccarrone M. GPR55 and its interaction with membrane lipids: comparison with other endocannabinoid-binding receptors. *Curr Med Chem* 2013;**20**:64–78.
- Gebeh K, Willets JM, Marczylo EL, Taylor AH, Konje JC. Ectopic pregnancy is associated with high anandamide levels and aberrant expression of FAAH and CBI in fallopian tubes. *J Clin Endocrinol Metab* 2012;**97**:2827–2835.
- Gebeh K, Willets JM, Bari M, Hirst RA, Marczylo TH, Taylor AH, Maccarrone M, Konje JC. Elevated anandamide and related N-acylethanolamine levels occur in the peripheral blood of women with ectopic pregnancy and are mirrored by changes in peripheral fatty acid amide hydrolase activity. *JCEM* 2013a;**98**:1226–1234.
- Gebeh AK, Willets JM, Marczylo TH, Konje JC. Plasma anandamide and related n-acylethanolamide levels are not elevated in pregnancies complicated by hyperemesis gravidarum. *J Matern Fetal Neonatal Med* 2013b (in press).
- Grossinsky CM, Hage ML, Tyrey L, Christakos AC, Hughes CL. hCG, progesterone, alphafetoprotein, and estradiol in the identification of ectopic pregnancy. *Obstet Gynecol* 1993;**81**:705–709.
- Guida M, Ligresti A, De Filippis D, D'Amico A, Petrosino S, Cipriano M, Bifulco G, Simonetti S, Orlando P, Insabato L et al. The levels of the endocannabinoid receptor CB2 and its ligand 2-arachidonoylglycerol are elevated in endometrial carcinoma. *Endocrinology* 2010;**151**:921–928.
- Guo Y, Wang H, Okamoto Y, Ueda N, Kingsley PJ, Marnett LJ, Schmid HH, Das SK, Dey SK. N-acylphosphatidylethanolamine-hydrolyzing phospholipase D is an important determinant of uterine anandamide levels during implantation. *J Biol Chem* 2005;**280**:23429–23432.
- Guzick DS, Sullivan MW, Adamson GD, Cedars MI, Falk RJ, Peterson EP, Steinkampf MP. Efficacy of treatment for unexplained infertility. *Fertil Steril* 1998;**70**:207–213.
- Guzick DS, Overstreet JW, Factor-Litvak P, Brazil CK, Nakajima ST, Coutifaris C, Carson SA, Cisneros P, Steinkampf MP, Hill JA et al. Sperm morphology, motility, and concentration in infertile and fertile men. *N Engl J Med* 2001;**345**:1388–1393.
- Habayeb OM, Taylor AH, Evans DM, Cooke MS, Taylor DJ, Bell SC, Konje JC. Plasma levels of the endocannabinoid anandamide in women: a potential role in pregnancy maintenance and labor? *JCEM* 2004;**89**:5482–5487.
- Habayeb OM, Taylor AH, Finney M, Evans MD, Konje JC. Plasma anandamide concentration and pregnancy outcome in women with threatened miscarriage. *JAMA* 2008a;**299**:1135–1136.
- Habayeb OM, Taylor AH, Bell SC, Taylor DJ, Konje JC. Expression of the endocannabinoid system in human first trimester placenta and its role in trophoblast proliferation. *Endocrinology* 2008b;**149**:5052–5060.
- Hardarson T, Ahlström A, Rogberg L, Botros L, Hillensjö T, Westlander G, Sakkas D, Wikland M. Non-invasive metabolomic profiling of Day 2 and 5 embryo culture medium: a prospective randomized trial. *Hum Reprod* 2012;**27**:89–96.
- Hardie L, Trayhurn P, Abramovich D, Fowler P. Circulating leptin in women: a longitudinal study in the menstrual cycle and during pregnancy. *Clin Endocrinol (Oxf)* 1997;**47**:101–106.
- Helliwell RJ, Chamley LW, Blake-Palmer K, Mitchell MD, Wu J, Kearns CS, Glass M. Characterization of the endocannabinoid system in early human pregnancy. *J Clin Endocrinol Metab* 2004;**89**:5168–5174.
- Henson MC, Castracane VD. Leptin in pregnancy: an update. *Biol Reprod* 2006;**74**:218–229.
- Iliodromiti S, Kelsey TW, Anderson RA, Nelson SM. Can anti-Müllerian hormone predict the diagnosis of polycystic ovary syndrome? A systematic review and meta-analysis of extracted data. *J Clin Endocrinol Metab* 2013;**98**:3332–3340.
- Iuvone T, De Filippis D, Di Spiezo Sardo A, D'Amico A, Simonetti S, Sparice S, Esposito G, Bifulco G, Insabato L, Nappi C et al. Selective CB2 up-regulation in women affected by endometrial inflammation. *J Cell Mol Med* 2008;**12**:661–670.
- Izzo AA, Borrelli F, Capasso R, Di Marzo V, Mechoulam R. Non-psychotropic plant cannabinoids: new therapeutic opportunities from an ancient herb. *Trends Pharmacol Sci* 2009;**30**:515–527.
- Jequier AM. Semen analysis: a new manual and its application to the understanding of semen and its pathology. *Asian J Androl* 2010;**12**:11–13.
- Jonsson KO, Vandevoorde S, Lambert DM, Tiger G, Fowler CJ. Effects of homologues and analogues of palmitoylethanolamide upon the inactivation of the endocannabinoid anandamide. *Br J Pharmacol* 2001;**133**:1263–1275.
- Kagan KO, Hoopmann M, Abele H, Alkier R, Lüthgens K. First-trimester combined screening for trisomy 21 with different combinations of placental growth factor, free β -human chorionic gonadotropin and pregnancy-associated plasma protein-A. *Ultrasound Obstet Gynecol* 2012;**40**:530–535.
- Karasu T, Marczylo TH, Maccarrone M, Konje JC. The role of sex steroid hormones, cytokines and the endocannabinoid system in female fertility. *Hum Reprod Update* 2011;**17**:347–361.
- Kishimoto S, Kobayashi Y, Oka S, Gokoh M, Waku K, Sugiura T. 2-Arachidonoylglycerol, an endogenous cannabinoid receptor ligand, induces accelerated production of chemokines in HL-60 cells. *J Biochem* 2004;**135**:517–524.
- Klein TW, Newton C, Larsen K, Chou J, Perkins I, Lu L, Nong L, Friedman H. Cannabinoid receptors and T helper cells. *J Neuroimmunol* 2004;**147**:91–94.
- Kozak KR, Crews BC, Ray JL, Tai HH, Morrow JD, Marnett LJ. Metabolism of prostaglandin glycerol esters and prostaglandin ethanolamides *in vitro* and *in vivo*. *J Biol Chem* 2001;**276**:36993–36998.
- Kozak KR, Crews BC, Morrow JD, Wang LH, Ma HY, Weinander R, Jakobsson PJ, Marnett LJ. Metabolism of the endocannabinoids, 2-arachidonoylglycerol and anandamide, into prostaglandin, thromboxane, and prostacyclin glycerol esters and ethanolamides. *J Biol Chem* 2002;**277**:44877–44885.
- Krause TG, Christens P, Wohlfahrt J, Lei U, Westergaard T, Nørgaard-Pedersen B, Melbye M. Second-trimester maternal serum alpha-fetoprotein and risk of adverse pregnancy outcome(1). *Obstet Gynecol* 2001;**97**:277–282.

- Kuc S, Wortelboer EJ, van Rijn BB, Franx A, Visser GH, Schielen PC. Evaluation of 7 serum biomarkers and uterine artery Doppler ultrasound for first-trimester prediction of preeclampsia: a systematic review. *Obstet Gynecol Surv* 2011;**66**:225–239.
- Kumar PG, Shoeb M. The role of trp ion channels in testicular function. *Adv Exp Med Biol* 2011;**704**:881–908.
- Laird SM, Tuckerman EM, Dalton CF, Dunphy BC, Li TC, Zhang X. The production of leukaemia inhibitory factor by human endometrium: presence in uterine flushings and production by cells in culture. *Hum Reprod* 1997;**12**:569–574.
- Lam PM, Marczylo TH, El-Talatini M, Finney M, Nallendran V, Taylor AH, Konje JC. Ultra performance liquid chromatography tandem mass spectrometry method for the measurement of anandamide in human plasma. *Anal Biochem* 2008;**380**:195–201.
- Lam PM, Marczylo TH, Konje JC. Simultaneous measurement of three N-acyl ethanolamides in human bio-matrices using ultra performance liquid chromatography-tandem mass spectrometry. *Anal Bioanal Chem* 2010;**398**:2089–2097.
- Lambert-Messerlian GM, Canick JA. Clinical application of inhibin a measurement: prenatal serum screening for Down syndrome. *Semin Reprod Med* 2004;**22**:235–242.
- Lazzarin N, Valensise H, Bari M, Ubaldi F, Battista N, Finazzi-Agrò A, Maccarrone M. Fluctuations of fatty acid amide hydrolase and anandamide levels during the human ovulatory cycle. *Gynecol Endocrinol* 2004;**18**:212–218.
- Lédée N, Petitbarat M, Rahmati M, Dubanchet S, Chaouat G, Sandra O, Perrier-d'Hauterive S, Munaut C, Foidart JM. New pre-conception immune biomarkers for clinical practice: interleukin-18, interleukin-15 and TWEAK on the endometrial side, G-CSF on the follicular side. *J Reprod Immunol* 2011;**88**:118–123.
- Lee JY, Lee M, Lee SK. Role of endometrial immune cells in implantation. *Clin Exp Reprod Med* 2011;**38**:119–125.
- Leung K, Elmes MW, Glaser ST, Deutsch DG, Kaczocha M. Role of FAAH-like anandamide transporter in anandamide inactivation. *PLoS One* 2013;**8**:e79355.
- Lewis SE, Maccarrone M. Endocannabinoids, sperm biology and human fertility. *Pharmacol Res* 2009;**60**:126–131.
- Lewis LS, Rapino C, Di Tommaso M, Pucci M, Battista N, Paro R, Simon L, Lutton D, Maccarrone M. Differences in the endocannabinoid system of sperm from fertile and infertile men. *PLoS One* 2012;**7**:e47704.
- Lim H, Paria BC, Das SK, Dinchuk JE, Langenbach R, Trzaskos JM, Dey SK. Multiple female reproductive failures in cyclooxygenase 2-deficient mice. *Cell* 1997;**91**:197–208.
- Linne Y. Effects of obesity on women's reproduction and complications during pregnancy. *Obes Rev* 2004;**5**:137–143.
- Liu WM, Duan EK, Cao YJ. Effects of anandamide on embryo implantation in the mouse. *Life Sci* 2002;**71**:1623–1632.
- Maccarrone M. Endocannabinoids: friends and foes of reproduction. *Prog Lipid Res* 2009;**48**:344–354.
- Maccarrone M. Endocannabinoids as markers of sperm quality: hot spots. *Front Endocrinol (Lausanne)* 2013;**4**:169.
- Maccarrone M, Finazzi-Agrò A. Anandamide hydrolase: a guardian angel of human reproduction? *Trends Pharmacol Sci* 2004;**25**:353–357.
- Maccarrone M, Wenger T. Effects of cannabinoids on hypothalamic and reproductive function. *Hand Exp Pharmacol* 2005;**168**:555–571.
- Maccarrone M, Valensise H, Bari M, Lazzarin N, Romanini C, Finazzi-Agrò A. Relation between decreased anandamide hydrolase concentrations in human lymphocytes and miscarriage. *Lancet* 2000;**355**:1329–1329.
- Maccarrone M, Valensise H, Bari M, Lazzarin N, Romanini C, Finazzi-Agrò A. Progesterone up-regulates anandamide hydrolase in human lymphocytes: role of cytokines and implications for fertility. *J Immunol* 2001;**166**:7183–7189.
- Maccarrone M, Bisogno T, Valensise H, Lazzarin N, Fezza F, Manna C, Di Marzo V, Finazzi-Agrò A. Low fatty acid amide hydrolase and high anandamide levels are associated with failure to achieve an ongoing pregnancy after IVF and embryo transfer. *Mol Hum Reprod* 2002a;**8**:188–195.
- Maccarrone M, Bari M, Battista N, Finazzi-Agrò A. Estrogen stimulates arachidonylethanolamide release from human endothelial cells and platelet activation. *Blood* 2002b;**100**:4040–4048.
- Maccarrone M, Bari M, Di Rienzo M, Finazzi-Agrò A, Rossi A. Progesterone activates fatty acid amide hydrolase (FAAH) promoter in human T lymphocytes through the transcription factor Ikaros. Evidence for a synergistic effect of leptin. *J Biol Chem* 2003a;**278**:32726–32732.
- Maccarrone M, Cecconi S, Rossi G, Battista N, Pauselli R, Finazzi-Agrò A. Anandamide activity and degradation are regulated by early postnatal aging and follicle-stimulating hormone in mouse Sertoli cells. *Endocrinology* 2003b;**144**:20–28.
- Maccarrone M, Barboni B, Paradisi A, Bernabò N, Gasperi V, Pistilli MG, Fezza F, Lucidi P, Mattioli M. Characterization of the endocannabinoid system in boar spermatozoa and implications for sperm capacitation and acrosome reaction. *J Cell Sci* 2005;**118**:4393–4404.
- Maccarrone M, Dainese E, Oddi S. Intracellular trafficking of anandamide: new concepts for signaling. *Trends Biochem Sci* 2010;**35**:601–608.
- Marczylo TH, Lam PM, Nallendran V, Taylor AH, Konje JC. A solid-phase method for the extraction and measurement of anandamide from multiple human biomatrices. *Anal Biochem* 2009;**384**:106–113.
- Marczylo TH, Lam PM, Amoako AA, Konje JC. Anandamide levels in human female reproductive tissues: solid-phase extraction and measurement by ultraperformance liquid chromatography tandem mass spectrometry. *Anal Biochem* 2010;**400**:155–162.
- McKinney MK, Cravatt BF. Structure and function of fatty acid amide hydrolase. *Annu Rev Biochem* 2005;**74**:411–432.
- Mechoulam R, Parker LA. The endocannabinoid system and the brain. *Annu Rev Psychol* 2013;**64**:21–47.
- Metwally M, Ledger WL. Reproductive endocrinology and clinical aspects of obesity in women. *Ann N Y Acad Sci* 2008;**1127**:140–146.
- Mihu D, Costin N, Mihu CM, Blaga LD, Pop RB. C-reactive protein, marker for evaluation of systemic inflammatory response in preeclampsia. *Rev Med Chir Soc Med Nat Iasi* 2008;**112**:1019–1025.
- Mitchell MD, Sato TA, Wang A, Keelan JA, Ponnampalam AP, Glass M. Cannabinoids stimulate prostaglandin production by human gestational tissues through a tissue- and CBI-receptor-specific mechanism. *Am J Physiol Endocrinol Metab* 2008;**294**:E352–E356.
- Nallendran V, Lam PM, Marczylo TH, Bankart MJ, Taylor AH, Taylor DJ, Konje JC. The plasma levels of the endocannabinoid, anandamide, increase with the induction of labour. *BJOG* 2010;**117**:863–869.
- Ness RB, McLaughlin MT, Heine RP, Bass DC, Mortimer L. Fetal fibronectin as a biomarker to discriminate between ectopic and intrauterine pregnancies. *Am J Obstet Gynecol* 1998;**179**:697–702.
- Nicolaides KH, Wright D, Poon LC, Syngelaki A, Gil MM. First-trimester contingent screening for trisomy 21 by biomarkers and maternal blood cell-free DNA testing. *Ultrasound Obstet Gynecol* 2013;**42**:41–50.
- Nir I, Ayalon D, Tsafiri A, Cordova T, Lindner HR. Suppression of the cyclic surge of luteinizing hormone secretion and of ovulation in the rat by delta 1-tetrahydrocannabinol. *Nature* 1973;**243**:470–471.
- Nolen BM, Lokshin AE. Biomarker testing for ovarian cancer: clinical utility of multiplex assays. *Mol Diagn Ther* 2013;**17**:139–146.
- Okamoto Y, Tsuboi K, Ueda N. Enzymatic formation of anandamide. *Vitam Horm* 2009;**81**:1–24.
- Pacher P, Kunos G. Modulating the endocannabinoid system in human health and disease—successes and failures. *FEBS J* 2013;**280**:1918–1943.
- Palkovits M, Harvey-White J, Liu J, Kovacs ZS, Bobest M, Lovas G, Bagó AG, Kunos G. Regional distribution and effects of postmortal delay on endocannabinoid content of the human brain. *Neuroscience* 2008;**152**:1032–1039.
- Palmer SS, Barnhart KT. Biomarkers in reproductive medicine: the promise, and can it be fulfilled? *Fertil Steril* 2013;**99**:954–962.
- Paria BC, Ma W, Andrenyak DM, Schmid PC, Schmid HH, Moody DE, Deng H, Makriyannis A, Dey SK. Effects of cannabinoids on preimplantation mouse embryo development and implantation are mediated by brain-type cannabinoid receptors. *Biol Reprod* 1998;**58**:1490–1495.
- Park B, Gibbons HM, Mitchell MD, Glass M. Identification of the CBI cannabinoid receptor and fatty acid amide hydrolase (FAAH) in the human placenta. *Placenta* 2003;**24**:990–995.
- Pepe MS, Feng Z, Huang Y, Longton G, Prentice R, Thompson IM, Zheng Y. Integrating the predictiveness of a marker with its performance as a classifier. *Am J Epidemiol* 2008;**167**:362–368.
- Peralta L, Agirregoitia E, Mendoza R, Expósito A, Casis L, Matorras R, Agirregoitia N. Expression and localization of cannabinoid receptors in human immature oocytes and unfertilized metaphase-II oocytes. *Reprod BioMed Online* 2011;**23**:372–379.
- Pertwee RG. Elevating endocannabinoid levels: pharmacological strategies and potential therapeutic applications. *Proc Nutr Soc* 2013 (in press).

- Pertwee RG, Howlett AC, Abood ME, Alexander SP, Di Marzo V, Elphick MR, Greasley PJ, Hansen HS, Kunos G, Mackie K *et al*. International Union of Basic and Clinical Pharmacology. LXXIX. Cannabinoid receptors and their ligands: beyond CB₁ and CB₂. *Pharmacol Rev* 2010;**62**:588–631.
- Piccinni MP. T cell tolerance towards the fetal allograft. *J Reprod Immunol* 2010;**85**:71–75.
- Piccinni MP, Beloni L, Livi C, Maggi E, Scarselli G, Romagnani S. Defective production of both leukemia inhibitory factor and type 2 T-helper cytokines by decidual T cells in unexplained recurrent abortions. *Nat Med* 1998;**4**:1020–1024.
- Pistis M, Melis M. From surface to nuclear receptors: the endocannabinoid family extends its assets. *Curr Med Chem* 2010;**17**:1450–1467.
- Polsani S, Phipps E, Jim B. Emerging new biomarkers of preeclampsia. *Adv Chronic Kidney Dis* 2013;**20**:271–279.
- Practice Committee of the American Society for Reproductive Medicine. The clinical utility of sperm DNA integrity testing: a guideline. *Fertil Steril* 2013;**99**:673–677.
- Rausch ME, Barnhart KT. Serum biomarkers for detecting ectopic pregnancy. *Clin Obstet Gynecol* 2012;**55**:418–423.
- Ridker PM, Buring JE, Cook NR, Rifai N. C-reactive protein, the metabolic syndrome, and risk of incident cardiovascular events: an 8-year follow-up of 14 719 initially healthy American women. *Circulation* 2003;**107**:391–397.
- Ross RA. The enigmatic pharmacology of GPR55. *Trends Pharmacol Sci* 2009;**30**:156–163.
- Rossato M. Endocannabinoids, sperm functions and energy metabolism. *Mol Cell Endocrinol* 2008;**286**:S31–S35.
- Rossato M, Ion Popa F, Ferigo M, Clari G, Foresta C. Human sperm express cannabinoid receptor Cb1, the activation of which inhibits motility, acrosome reaction, and mitochondrial function. *J Clin Endocrinol Metab* 2005;**90**:984–991.
- Schuel H. Tuning the oviduct to the anandamide tone. *J Clin Invest* 2006;**116**:2087–2090.
- Schuel H, Goldstein E, Mechoulam R, Zimmerman AM, Zimmerman S. Anandamide (arachidonyl ethanolamide), a brain cannabinoid receptor agonist, reduces sperm fertilizing capacity in sea urchins by inhibiting the acrosome reaction. *Proc Natl Acad Sci USA* 1994;**91**:7678–7682.
- Schuel H, Burkman LJ, Lippes J, Crickard K, Forester E, Piomelli D, Giuffrida A. N-Acylethanolamines in human reproductive fluids. *Chem Phys Lipids* 2002a;**121**:211–227.
- Schuel H, Burkman LJ, Lippes J, Crickard K, Mahony MC, Giuffrida A, Picone RP, Makriyannis A. Evidence that anandamide-signaling regulates human sperm functions required for fertilization. *Mol Reprod Dev* 2002b;**63**:376–387.
- Seeber BE. What serial hCG can tell you, and cannot tell you, about an early pregnancy. *Fertil Steril* 2012;**98**:1074–1077.
- Seifer DB, Lambert-Messerlian GM, Canick JA, Frishman GN, Schneyer AL. Serum inhibin levels are lower in ectopic than intrauterine spontaneously conceived pregnancies. *Fertil Steril* 1996;**65**:667–669.
- Sen A, Kushnir VA, Barad DH, Gleicher N. Endocrine autoimmune diseases and female infertility. *Nat Rev Endocrinol* 2014;**10**:37–50.
- Sharkey AM, King A, Clark DE, Burrows TD, Jokhi PP, Charnock-Jones DS, Loke YW, Smith SK. Localization of leukemia inhibitory factor and its receptor in human placenta throughout pregnancy. *Biol Reprod* 1999;**60**:355–364.
- Shokry M, Bedaiwy MA, Fathalla MM, Alsemery A, Elwakil S, Murphy A. Maternal serum placental growth factor and soluble fms-like tyrosine kinase 1 as early predictors of preeclampsia. *Acta Obstet Gynecol Scand* 2010;**89**:143–146.
- Smith SK, Charnock-Jones DS, Sharkey AM. The role of leukemia inhibitory factor and interleukin-6 in human reproduction. *Hum Reprod* 1998;**13**:237–243.
- Stein RJ, Santos S, Nagatomi J, Hayashi Y, Minnerly BS, Xavier M, Patel AS, Nelson JB, Futrell WJ, Yoshimura N *et al*. Cool (TRPM8) and hot (TRPV1) receptors in the bladder and male genital tract. *J Urol* 2004;**172**:1175–1178.
- Stovall TG, Ling FW, Andersen RN, Buster JE. Improved sensitivity and specificity of a single measurement of serum progesterone over serial quantitative beta-human chorionic gonadotropin in screening for ectopic pregnancy. *Hum Reprod* 1992;**7**:723–725.
- Sucak A, Kanat-Pektas M, Gungor T, Mollamahmutoglu L. Leptin levels and antihypertensive treatment in preeclampsia. *Singapore Med J* 2010;**51**:39–43.
- Sun X, Dey SK. Aspects of endocannabinoid signaling in periimplantation biology. *Mol Cell Endocrinol* 2008;**286**:S3–11.
- Sun X, Dey SK. Endocannabinoid signaling in female reproduction. *ACS Chem Neurosci* 2012;**3**:349–355.
- Sun X, Wang H, Okabe M, Mackie K, Kingsley PJ, Marnett LJ, Cravatt BF, Dey SK. Genetic loss of Faah compromises male fertility in mice. *Biol Reprod* 2009;**80**:235–242.
- Sun X, Xie H, Yang J, Wang H, Bradshaw HB, Dey SK. Endocannabinoid signaling directs differentiation of trophoblast cell lineages and placentation. *Proc Natl Acad Sci USA* 2010;**107**:16887–16892.
- Taupin JL, Miossec V, Pitard V, Blanchard F, Daburon S, Raheer S, Jacques Y, Godard A, Moreau JF. gp190, reveals a LIF binding site outside and interactions between the two cytokine binding domains. *J Biol Chem* 1999;**274**:14482–14489.
- Taylor H, Ang C, Bell SC, Konje JC. The role of the endocannabinoid system in gametogenesis, implantation and early pregnancy. *Hum Reprod Update* 2007;**13**:501–513.
- Taylor AH, Amoako AA, Bambang K, Karasu T, Gebeh A, Lam PM, Marzczylo TH, Konje JC. Endocannabinoids and pregnancy. *Clin Chim Acta* 2010;**411**:921–930.
- Taylor H, Finney M, Lam PM, Konje JC. Modulation of the endocannabinoid system in viable and non-viable first trimester pregnancies by pregnancy-related hormones. *Reprod Biol Endocrinol* 2011;**29**:152.
- Tong S, Ngian GL, Onwude JL, Permezel M, Saglam B, Hay S, Konje JC, Marzczylo TH, Fleming G, Walker SP *et al*. Diagnostic accuracy of maternal serum macrophage inhibitory cytokine-1 and pregnancy-associated plasma protein-A at 6–10 weeks of gestation to predict miscarriage. *Obstet Gynecol* 2012;**119**:1000–1008.
- Toshimori K. Dynamics of the mammalian sperm head: modifications and maturation events from spermatogenesis to egg activation. *Adv Anat Embryol Cell Biol* 2009;**204**:5–94.
- Trabuocco E, Acone G, Marenga A, Pierantoni R, Cacciola G, Chioccarelli T, Mackie K, Fasano S, Colacurci N, Meccariello R *et al*. Endocannabinoid system in first trimester placenta: low FAAH and high Cb1 expression characterize spontaneous miscarriage. *Placenta* 2009;**30**:516–522.
- Ueda N, Tsuboi K, Uyama T, Ohnishi T. Biosynthesis and degradation of the endocannabinoid 2-arachidonoylglycerol. *Biofactors* 2011;**37**:1–7.
- Ueda N, Tsuboi K, Uyama T. Metabolism of endocannabinoids and related N-acyl ethanolamines: canonical and alternative pathways. *FEBS J* 2013;**280**:1874–1894.
- Van der Stelt M, van Kuik JA, Bari M, van Zadelhoff G, Leeflang BR, Veldink GA, Finazzi Agro' A, Vliegthart JF, Maccarrone M. Oxygenated metabolites of anandamide and 2-arachidonoyl-glycerol: conformational analysis and interaction with cannabinoid receptors, membrane transporter and fatty acid amide hydrolase. *J Med Chem* 2002;**45**:3709–3720.
- Vasan SS. Semen analysis and sperm function tests: how much to test? *Indian J Urol* 2011;**27**:41–48.
- Vogeser M, Hauer D, Christina Azad S, Huber E, Storr M, Schelling G. Release of anandamide from blood cells. *Clin Chem Lab Med* 2006;**44**:488–491.
- Volk M, Mauer A, Lovrečić L, Juvan P, Peterlin B. Expression signature as a biomarker for prenatal diagnosis of trisomy 21. *PLoS One* 2013;**8**:e74184.
- Voronina E, Wessel GM. The regulation of oocyte maturation. *Curr Top Dev Biol* 2003;**58**:53–110.
- Wang JX, Davies M, Norman RJ. Body mass and probability of pregnancy during assisted reproduction treatment: retrospective study. *BMJ* 2000;**321**:1320–1321.
- Wang JX, Davies MJ, Norman RJ. Obesity increases the risk of spontaneous abortion during infertility treatment. *Obes Res* 2002;**10**:551–554.
- Wang H, Guo Y, Wang D, Kingsley PJ, Marnett LJ, Das SK, DuBois RN, Dey SK. Aberrant cannabinoid signaling impairs oviductal transport of embryos. *Nat Med* 2004;**10**:1074–1080.
- Wang H, Dey SK, Maccarrone M. Jekyll and Hyde: two faces of cannabinoid signaling in male and female fertility. *Endocr Rev* 2006a;**27**:427–448.
- Wang H, Xie H, Guo Y, Zhang H, Takahashi T, Kingsley PJ, Marnett LJ, Das SK, Cravatt BF, Dey SK. Fatty acid amide hydrolase deficiency limits early pregnancy events. *J Clin Invest* 2006b;**116**:2122–2131.
- Wang H, Xie H, Dey SK. Loss of cannabinoid receptor CB1 induces preterm birth. *PLoS One* 2008;**3**:e3320.
- Woodcock J. Assessing the clinical utility of diagnostics used in drug therapy. *Clin Pharmacol Ther* 2010;**88**:765–773.
- Wu M, Yin Y, Zhao M, Hu L, Chen Q. The low expression of leukemia inhibitory factor in endometrium: possible relevant to unexplained infertility with multiple implantation failures. *Cytokine* 2013;**62**:334–339.

- Xie H, Sun X, Piao Y, Jegga AG, Handwerger S, Ko MS, Dey SK. Silencing or amplification of endocannabinoid signaling in blastocysts via CB1 compromises trophoblast cell migration. *J Biol Chem* 2012;**287**:32288–32297.
- Yu M, Ives D, Ramesha CS. Synthesis of prostaglandin E2 ethanolamide from anandamide by cyclooxygenase-2. *J Biol Chem* 1997;**272**:21181–21186.
- Zoerner AA, Gutzki FM, Batkai S, May M, Rakers C, Engeli S, Jordan J, Tsikas D. Quantification of endocannabinoids in biological systems by chromatography and mass spectrometry: a comprehensive review from an analytical and biological perspective. *Biochim Biophys Acta* 2011;**1811**:706–723.