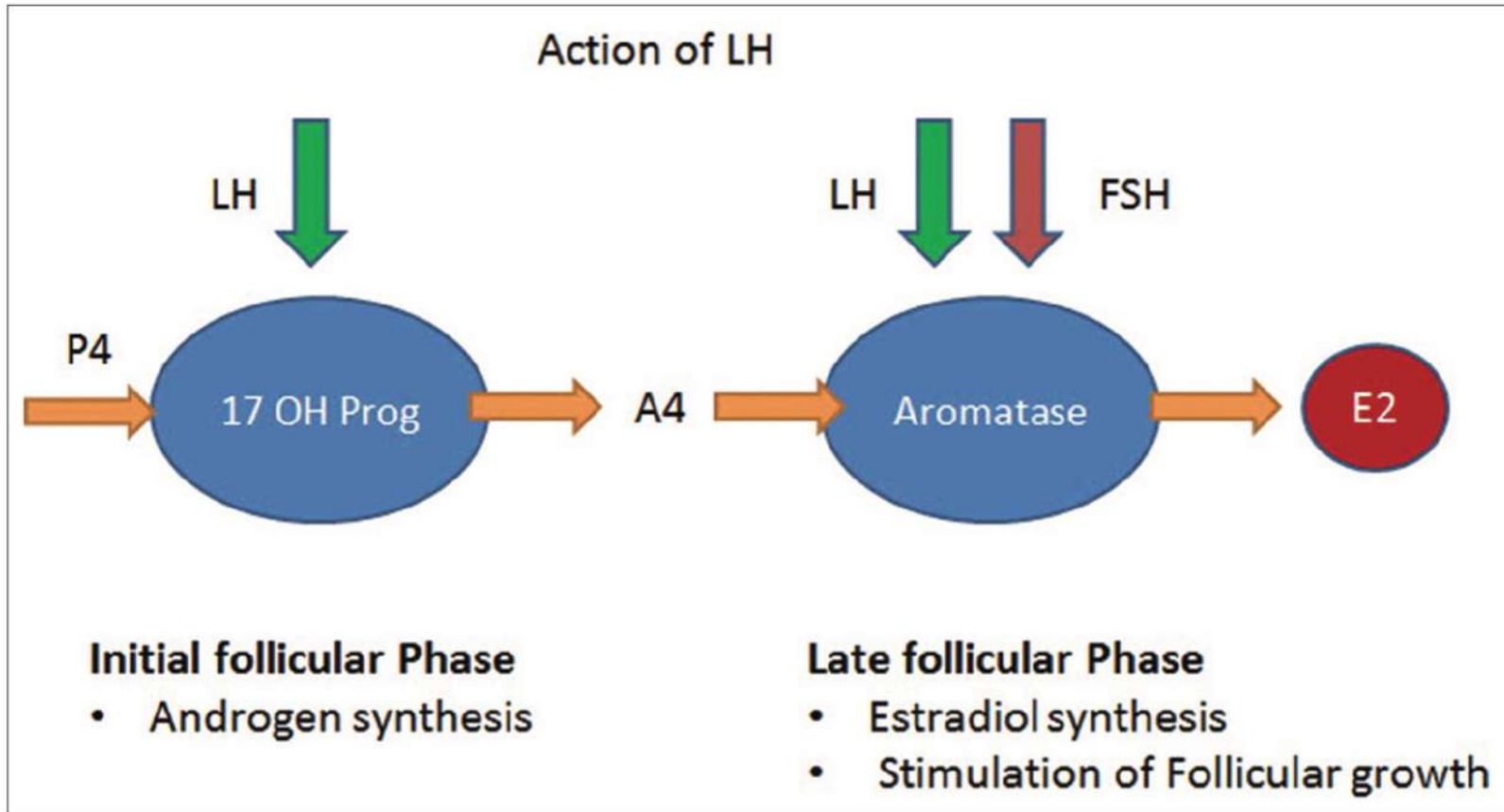


Two-cell Two-gonadotropin theory

...in a nutshell...



Ramaraju, *et al.*, 2013: Role of LH in controlled ovarian hyper-stimulation

Two-cell Two-gonadotropin theory

...and more in detail...

The steroid hormones are produced from cholesterol through a series of reactions catalyzed by **steroid cytochrome P450 (CYP) hydroxylases** and **hydroxysteroid dehydrogenases (HSD)**

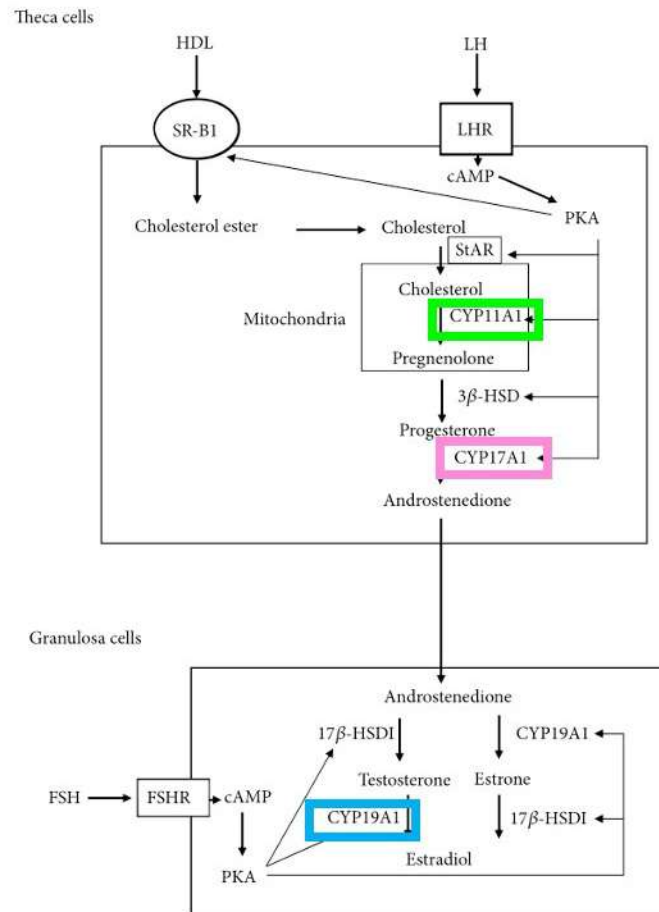


Figure 1



Schematic diagram of two-cell-two-gonadotropin theory in ovarian steroidogenesis. Theca cells autonomously produce androstenedione from cholesterol via the positive regulation of steroidogenic enzymes by LH/cAMP/PKA pathway. Granulosa cells convert androstenedione into estradiol. It is promoted by FSH/cAMP/PKA pathway.

Two-cell Two-gonadotropin theory

(1) The source of cholesterol for steroidogenesis depends on cholesterol ester uptake from plasma proteins by lipoprotein receptors, such as SR-B1

...and more in detail...

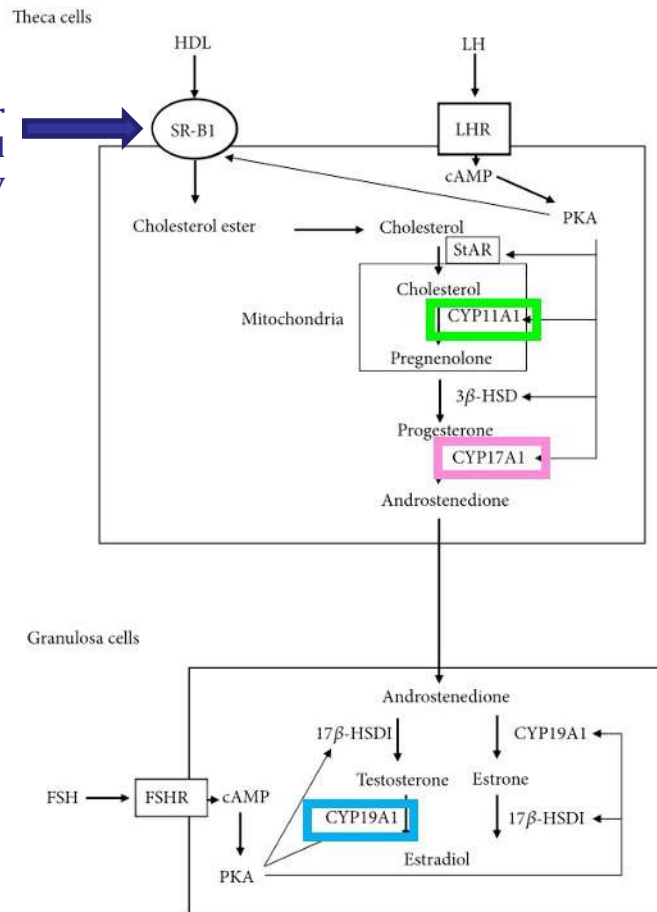


Figure 1



Schematic diagram of two-cell–two-gonadotropin theory in ovarian steroidogenesis. Theca cells autonomously produce androstenedione from cholesterol via the positive regulation of steroidogenic enzymes by LH/cAMP/PKA pathway. Granulosa cells convert androstenedione into estradiol. It is promoted by FSH/cAMP/PKA pathway.

Two-cell Two-gonadotropin theory

(1) The source of cholesterol for steroidogenesis depends on cholesterol ester uptake from plasma proteins by lipoprotein receptors, such as SR-B1

...and more in detail...

(2) Cholesterol transport from the outer to the inner mitochondria membrane by StAR represents a rate-limiting step of steroidogenesis

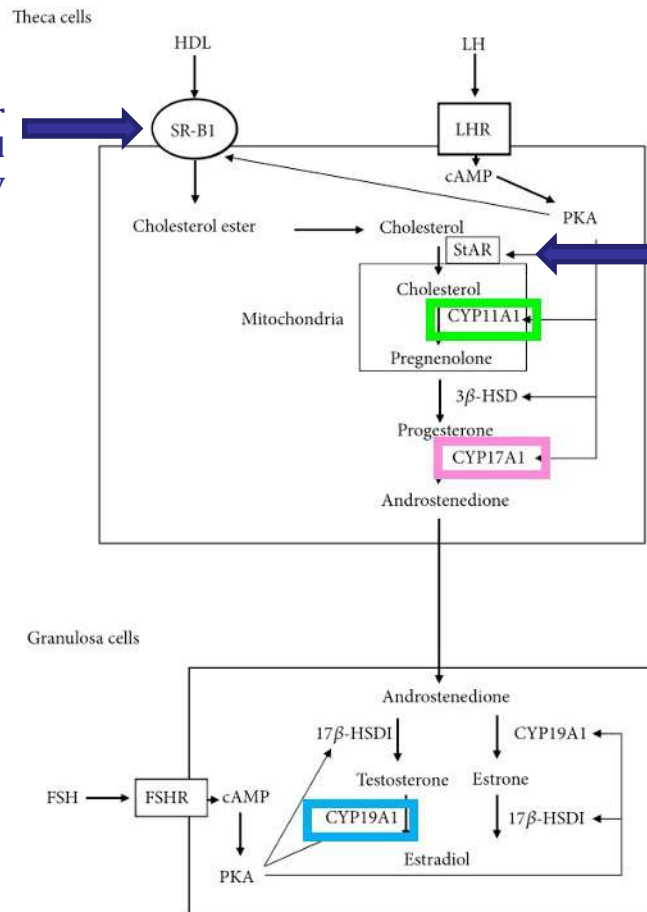


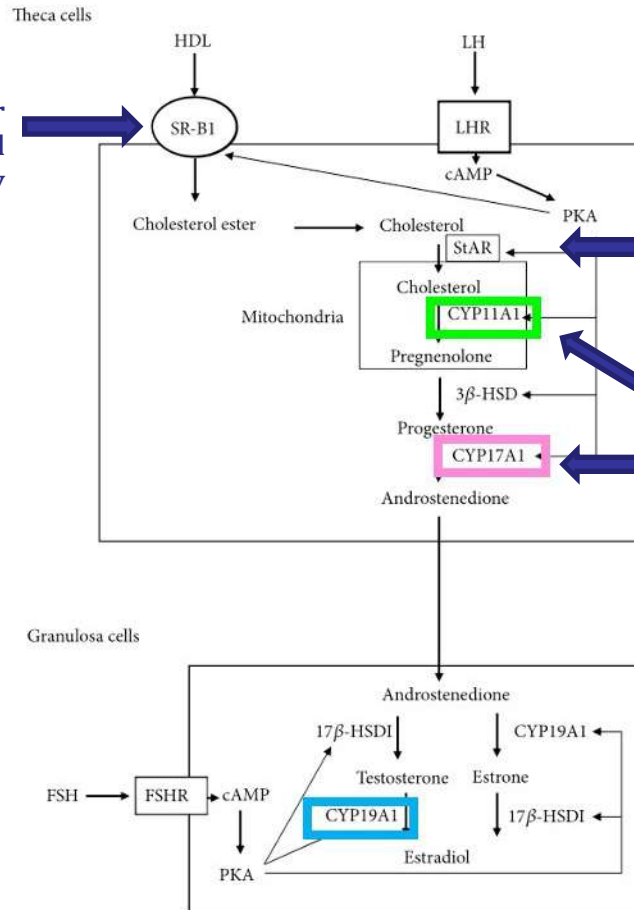
Figure 1



Schematic diagram of two-cell–two-gonadotropin theory in ovarian steroidogenesis. Theca cells autonomously produce androstenedione from cholesterol via the positive regulation of steroidogenic enzymes by LH/cAMP/PKA pathway. Granulosa cells convert androstenedione into estradiol. It is promoted by FSH/cAMP/PKA pathway.

Two-cell Two-gonadotropin theory

(1) The source of cholesterol for steroidogenesis depends on cholesterol ester uptake from plasma proteins by lipoprotein receptors, such as SR-B1



...and more in detail...

(2) Cholesterol transport from the outer to the inner mitochondria membrane by StAR represents a rate-limiting step of steroidogenesis

(3) Steroidogenesis begins with conversion of cholesterol into pregnenolone in mitochondria by CYP11A1

CYP17A1 catalyzes two sequential reactions (17 α -hydroxylation and a 17,20-lyase reaction) leading to the formation of androstenedione from progesterone.

Figure 1



Schematic diagram of two-cell–two-gonadotropin theory in ovarian steroidogenesis. Theca cells autonomously produce androstenedione from cholesterol via the positive regulation of steroidogenic enzymes by LH/cAMP/PKA pathway. Granulosa cells convert androstenedione into estradiol. It is promoted by FSH/cAMP/PKA pathway.

Two-cell Two-gonadotropin theory

(1) The source of cholesterol for steroidogenesis depends on cholesterol ester uptake from plasma proteins by lipoprotein receptors, such as SR-B1

...and more in detail...

(2) Cholesterol transport from the outer to the inner mitochondria membrane by StAR represents a rate-limiting step of steroidogenesis

(3) Steroidogenesis begins with conversion of cholesterol into pregnenolone in mitochondria by CYP11A1

CYP17A1 catalyzes two sequential reactions (17 α -hydroxylation and a 17,20-lyase reaction) leading to the formation of androstenedione from progesterone.

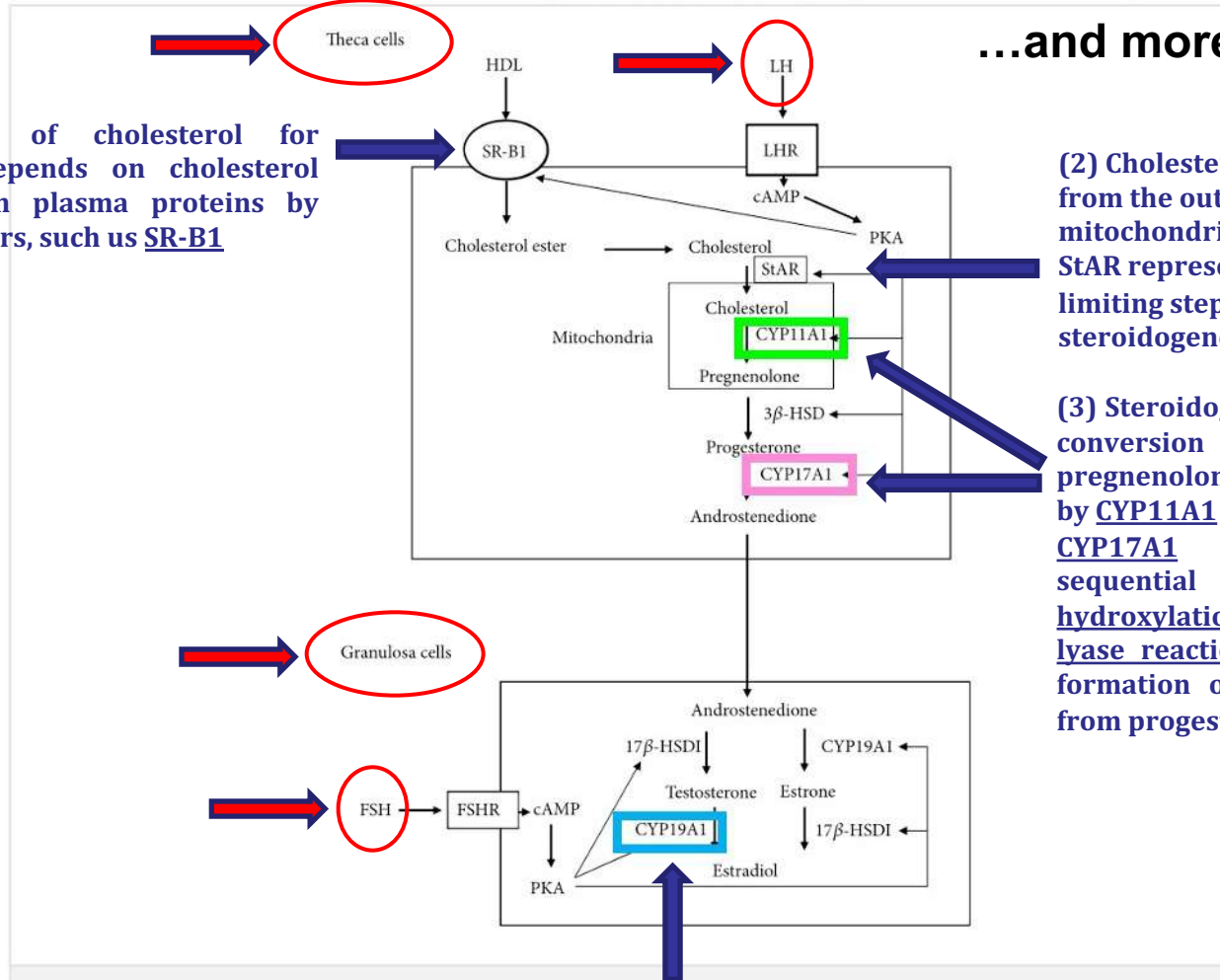


Figure 1



Schematic diagram of two-cell–two-gonadotropin theory in ovarian steroidogenesis. Theca cells autonomously produce androstenedione from cholesterol via the positive regulation of steroidogenic enzymes by LH/cAMP/PKA pathway. Granulosa cells convert androstenedione into estradiol. It is promoted by FSH/cAMP/PKA pathway.

Two-cell Two-gonadotropin theory

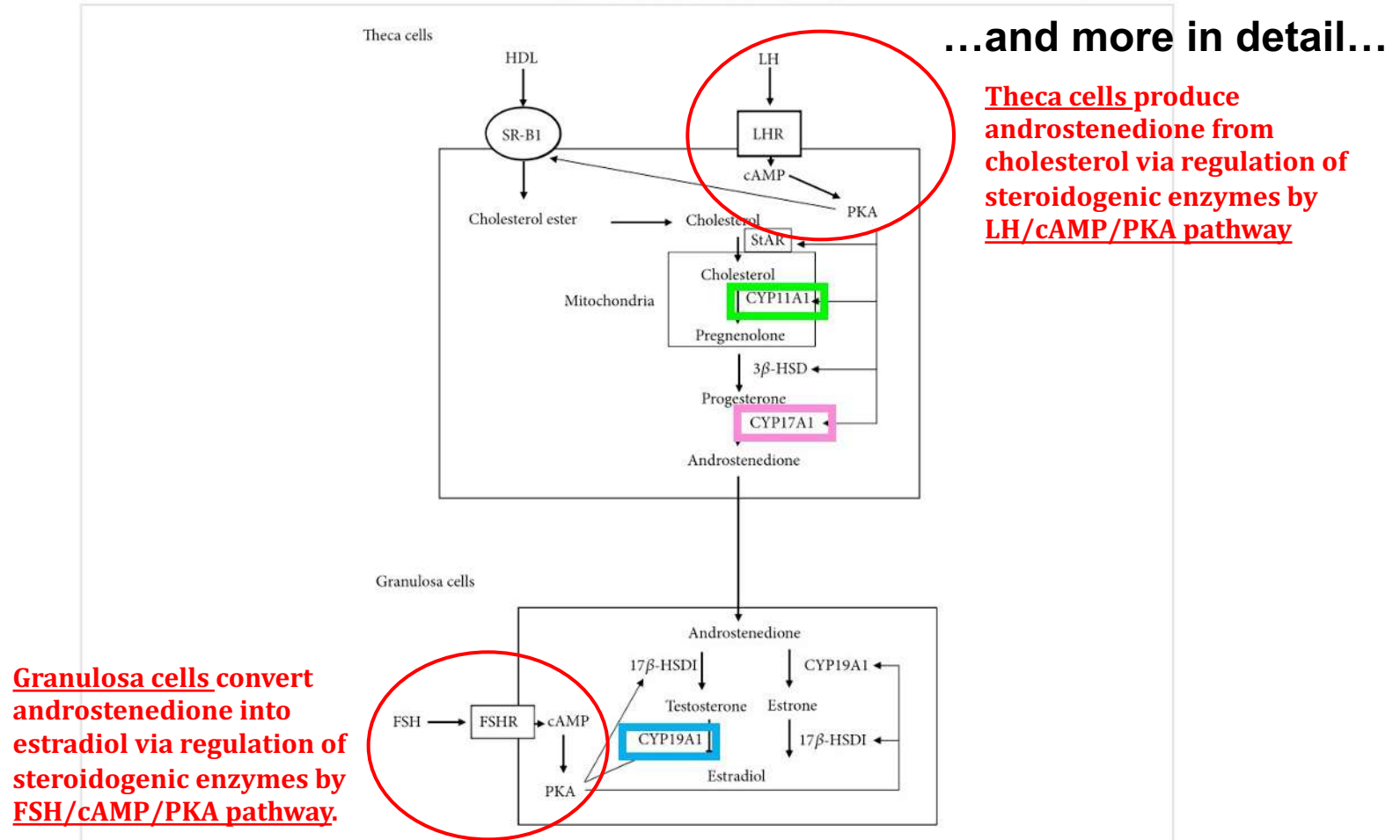


Figure 1



Schematic diagram of two-cell–two-gonadotropin theory in ovarian steroidogenesis. Theca cells autonomously produce androstenedione from cholesterol via the positive regulation of steroidogenic enzymes by LH/cAMP/PKA pathway. Granulosa cells convert androstenedione into estradiol. It is promoted by FSH/cAMP/PKA pathway.

Two-cell Two-gonadotropin theory

...Key points to sum up...

1. The most accepted model of follicle development is the **Two-cell Two-gonadotropin theory**.
2. The ovary comprises of **two cellular components (Theca cells and Granulosa cells)**, which are stimulated by LH and FSH, leading to the production of ovarian steroid hormones.
3. These steroid hormones are produced from cholesterol through a series of reactions catalyzed by steroid cytochrome P450 (CYP) hydroxylases (**CYP11A1**, **CYP17A1**, **CYP19A1**). Specifically:
 - CYP11A1**: essential enzyme in the synthesis of all steroid hormones. In fact, steroidogenesis begins with conversion of cholesterol into pregnenolone in mitochondria by CYP11A1 enzymes. The enzyme can be found in theca cells
 - CYP17A1**: is an essential steroidogenic enzyme, which catalyzes two sequential reactions (known as 17 α -hydroxylation and a 17,20-lyase reaction) leading to the formation of androstenedione from progesterone. The enzyme can be found in theca cells
 - CYP19A1**: also known as aromatase, is an enzyme responsible for a key step in the biosynthesis of estrogens. Aromatase enzyme is responsible for the »aromatization« (conversion) of androgens into estrogens. The enzyme can be found in granulosa cells.
4. **Theca cells** produce androstenedione from cholesterol via the positive regulation of steroidogenic enzymes by **LH/cAMP/PKA pathway**.
Granulosa cells, thanks to aromatase enzyme, convert androstenedione into estradiol. It is promoted by **FSH/cAMP/PKA pathway**.

TERTIARY or ANTRAL FOLLICLES: transition from antral to dominant follicle

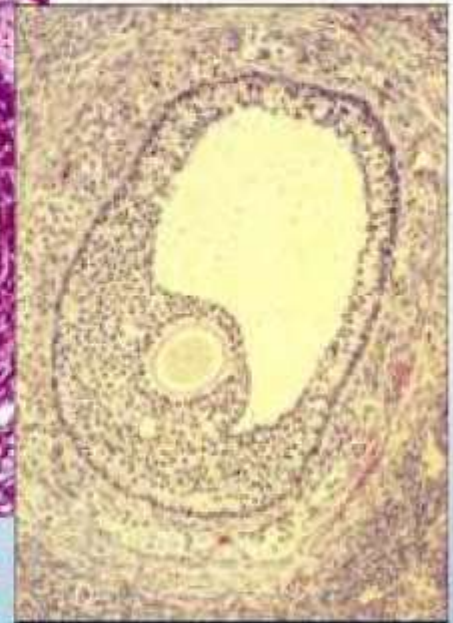
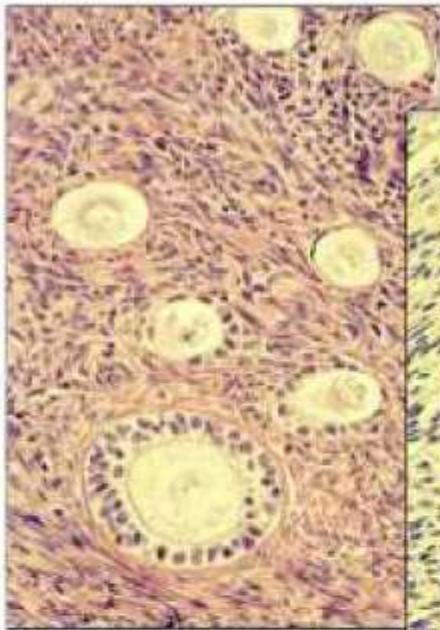
**FSH receptors are expressed
exclusively in granulosa cells**

**LH receptors up to the stage of preovulatory
follicles are expressed exclusively in theca
cells, whereas in periovulatory follicles they
start to be expressed also in granulosa cells
(initiated by FSH and estrogens).**

TERTIARY or ANTRAL FOLLICLES: transition from antral to dominant follicle

LH surge

LH receptors up to the stage of preovulatory follicles are expressed exclusively in theca cells, whereas in periovulatory follicles they start to be expressed also in granulosa cells (initiated by FSH and estrogens).



FSH – LH independent

FSH dependent

LH dependent

TERTIARY or ANTRAL FOLLICLES

PERIOVULATORY ANTRAL FOLLICLES

DOMINANT FOLLICLE

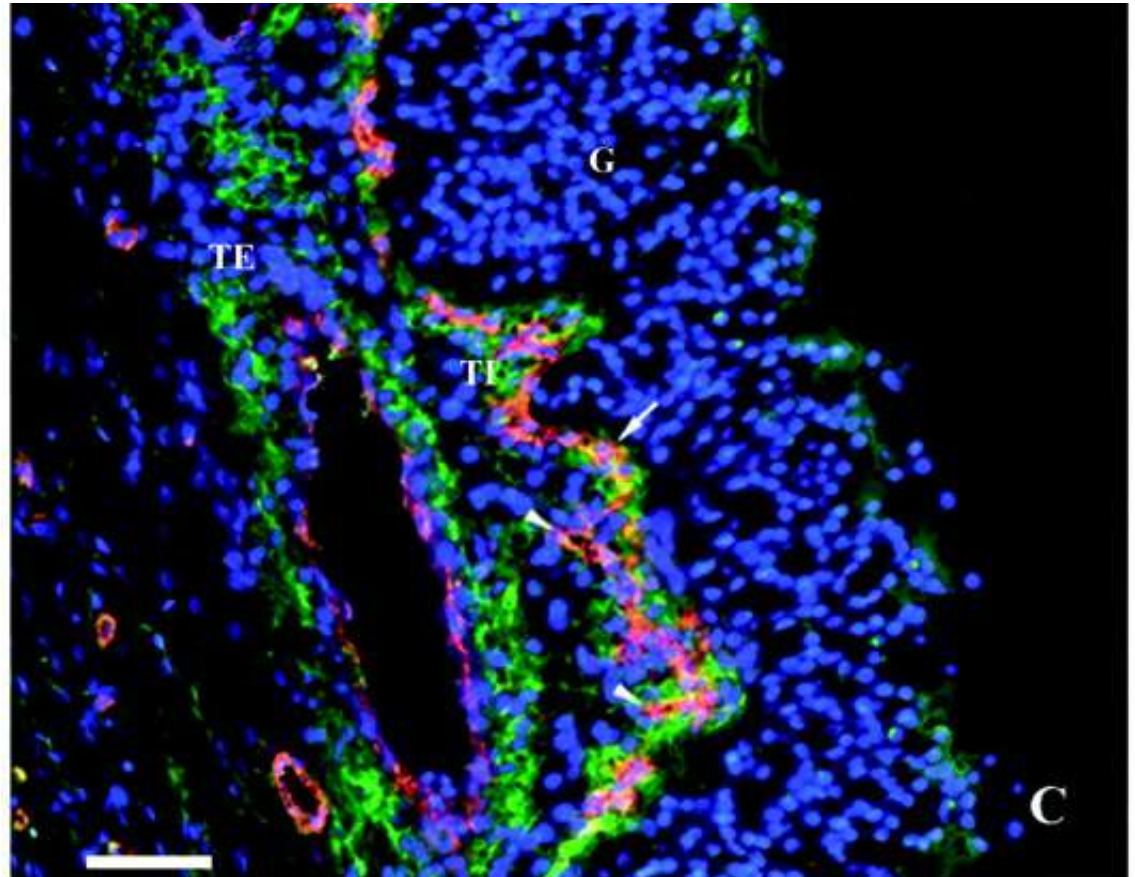
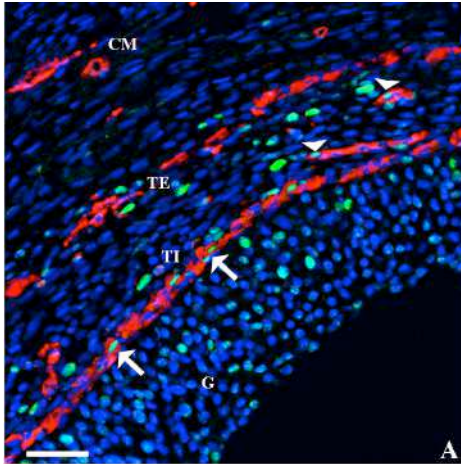


Species	Time of ovulation
Cattle	12 (10–15) hours after end of oestrus
Horse	24–48 hours before end of oestrus
Swine	38–48 hours after onset of oestrus
Sheep	18–20 hours after onset of oestrus
Goat	Near the end of oestrus
Dog	1–2 days after onset of oestrus
Cat	Induced ovulation

Onset of the LH surge to ovulation is species-specific

TERTIARY or ANTRAL FOLLICLES
PERIOVULATORY ANTRAL FOLLICLES
DOMINANT FOLLICLE

Follicular maturation

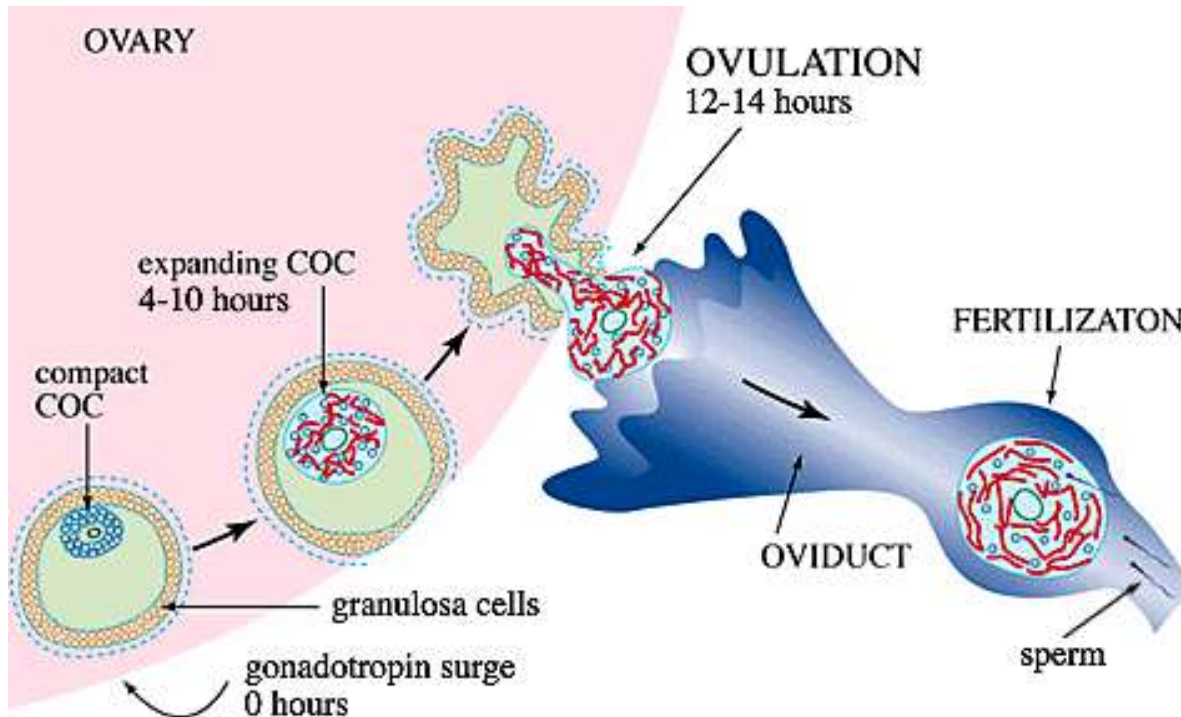


TERTIARY or ANTRAL FOLLICLES

PERIOVULATORY ANTRAL FOLLICLES

DOMINANT FOLLICLE

Cytoplasmic oocyte maturation



At the time of hormonal stimulation, there is a **progressive accumulation of HA, a mucopolysaccharide**, leading to expansion of the cumulus oophorus matrix **expansion**. Shortly before ovulation the COC matrix reaches its maximal volume (20 times its initial state). It is a sort of **intercellular cement**. **Cytoplasmic oocyte maturation involves:**

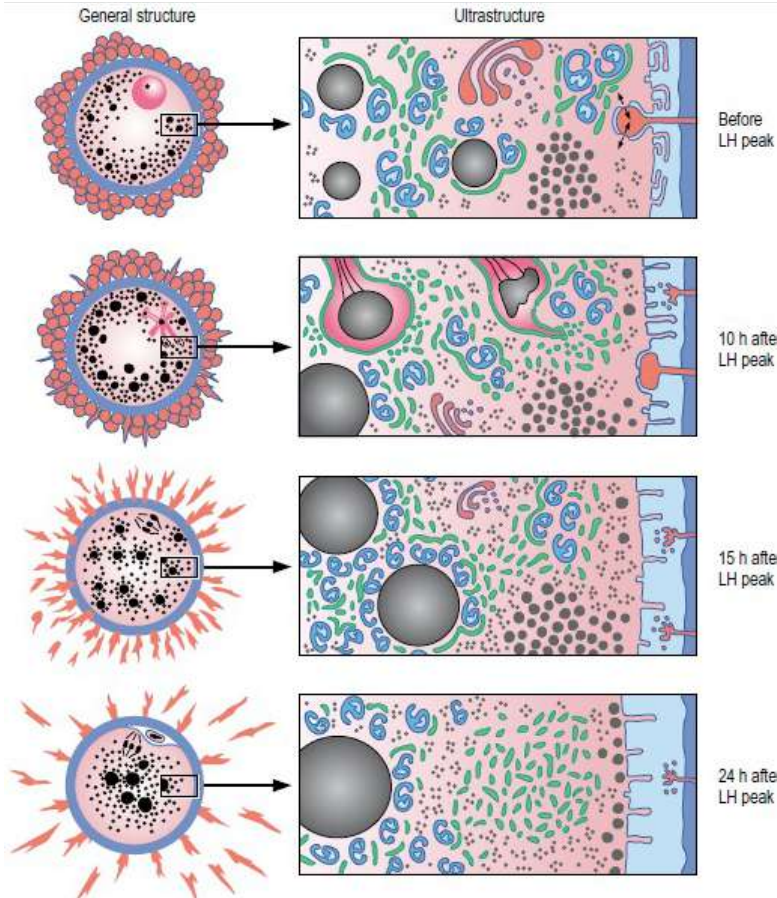
- Disruption of the contact between the corona radiata cells and the oocyte membrane,
- Increase lipid content in oocyte cytoplasm,
- The cortical granules are aligned just below the oocyte membrane.

TERTIARY or ANTRAL FOLLICLES

PERIOVULATORY ANTRAL FOLLICLES

DOMINANT FOLLICLE

Cytoplasmic oocyte maturation



Before the LH peak, the oocyte is characterized by a **peripherally located nucleus** (red) and a peripheral location of the **organelles**. At the ultrastructural level, the oocyte presents well developed smooth endoplasmic reticulum (SER; green), associated with lipid droplets (large black spheres) and mitochondria (blue), Golgi complexes (red), and clusters of cortical granules (small black spheres). The oocyte communicates through gap junctions with projections from the cumulus cells (arrows).

10 h after the LH peak, the oocyte has resumed meiosis and the germinal vesicle, breaks down, and microtubules (black lines) appear adjacent to the condensing chromosomes (black in red nucleus). The perivitelline space between the oocyte and the zona pellucida develops, and in the oocyte the mitochondria tend to arrange around the lipid droplets and the Golgi complexes have decreased in size. The gap junctions between the oocyte and the cumulus cell projections are partially lost

15 h after the LH peak, the oocyte has reached metaphase of the first meiotic division (metaphase I). The number and size of the lipid droplets have increased, mitochondria have assembled around the droplets, and these conglomerates have attained a more even distribution throughout the cytoplasm. Numerous ribosomes (black dots) have appeared, especially around the chromosomes, and the size of the Golgi complexes has decreased further. The gap junctions between the oocyte and the cumulus cell projections have been broken down

24 h after the LH peak, the oocyte has reached the metaphase of the second meiotic division (metaphase II) and the first polar body has been extruded. The bulk of the cortical granules are distributed at solitary positions along the plasma membrane. The lipid droplets and mitochondria have attained a more central location in the cytoplasm leaving a rather organelle-free peripheral zone in which the most prominent features are large clusters of SER. Golgi complexes are practically absent. Ovulation occurs around 24 h after the peak of the LH surge.

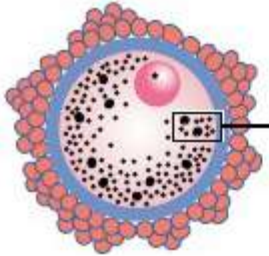
TERTIARY or ANTRAL FOLLICLES

PERIOVULATORY ANTRAL FOLLICLES

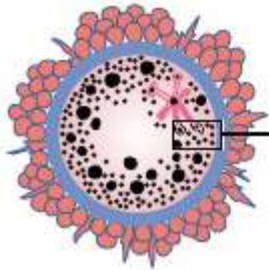
DOMINANT FOLLICLE

Nuclear oocyte maturation

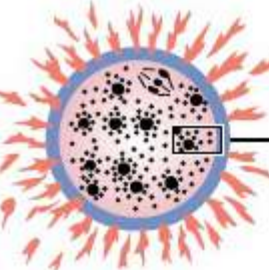
General structure



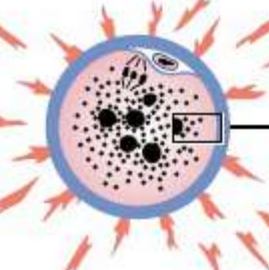
Germinal vesicle (GV)



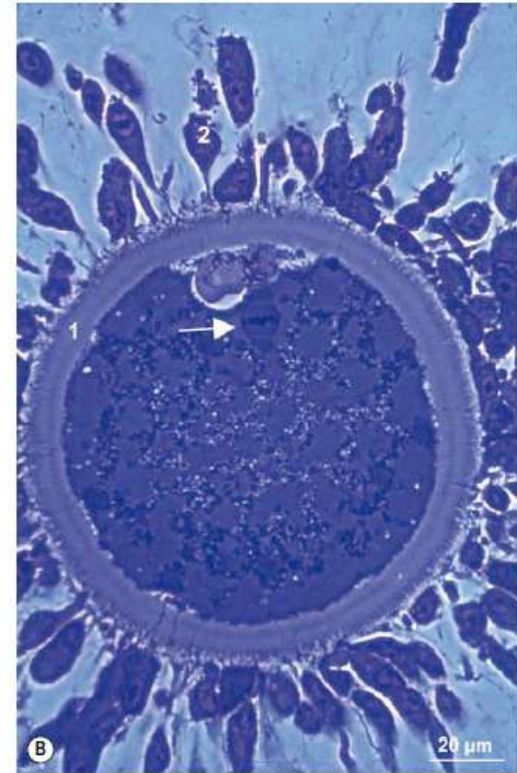
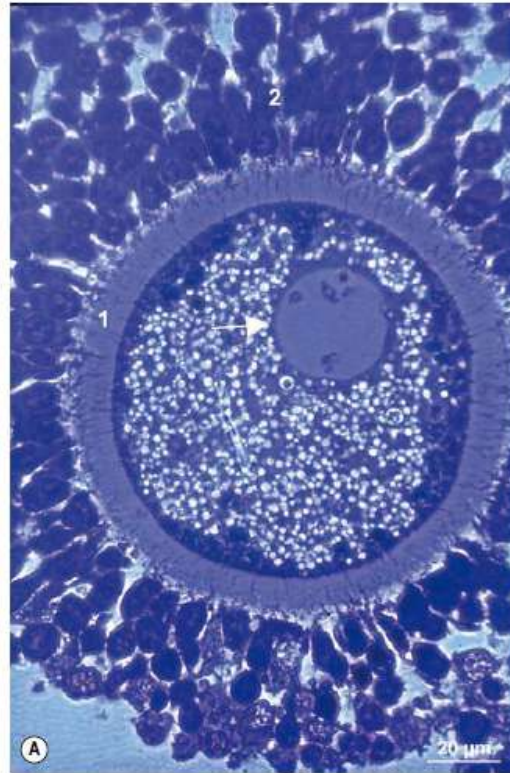
Germinal vesicle break down (GVBD)



Metaphase I (MI)

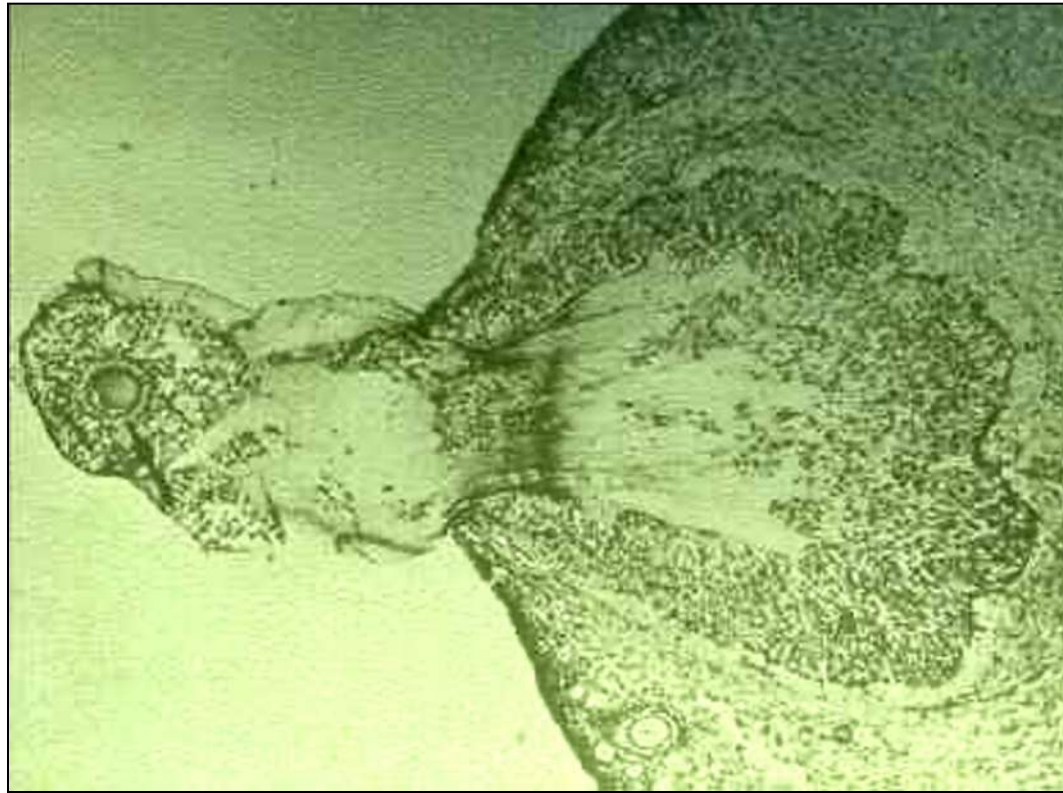


Metaphase II (MII)

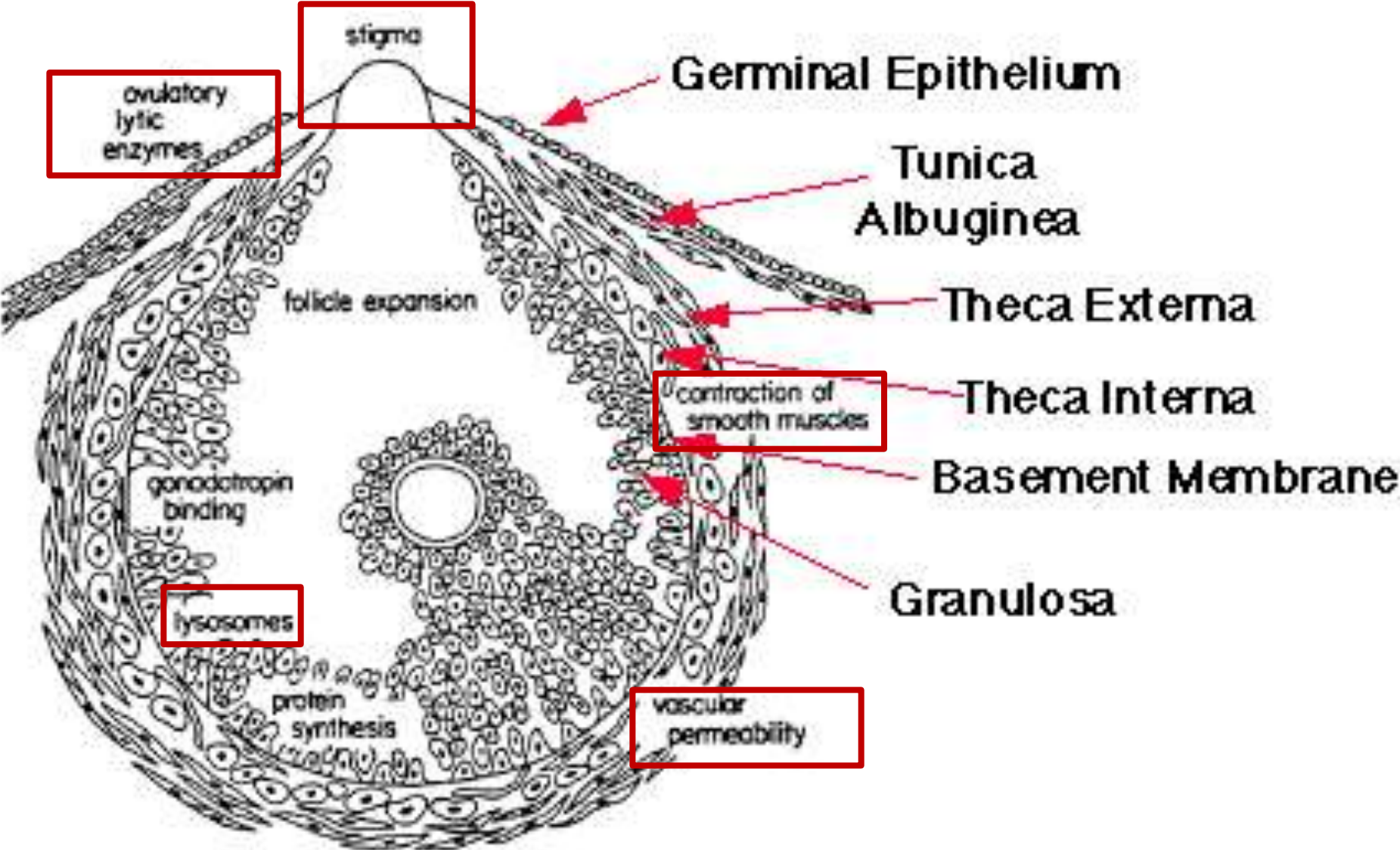


...in a nutshell...

OVULATION



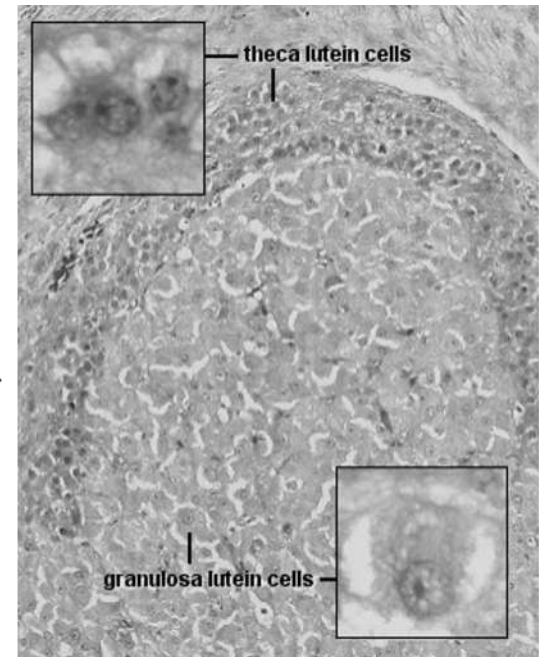
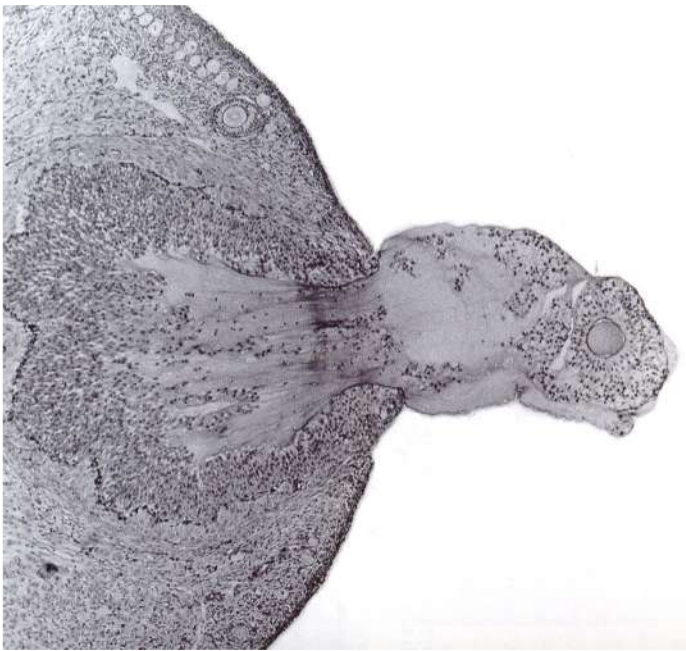
OVULATION

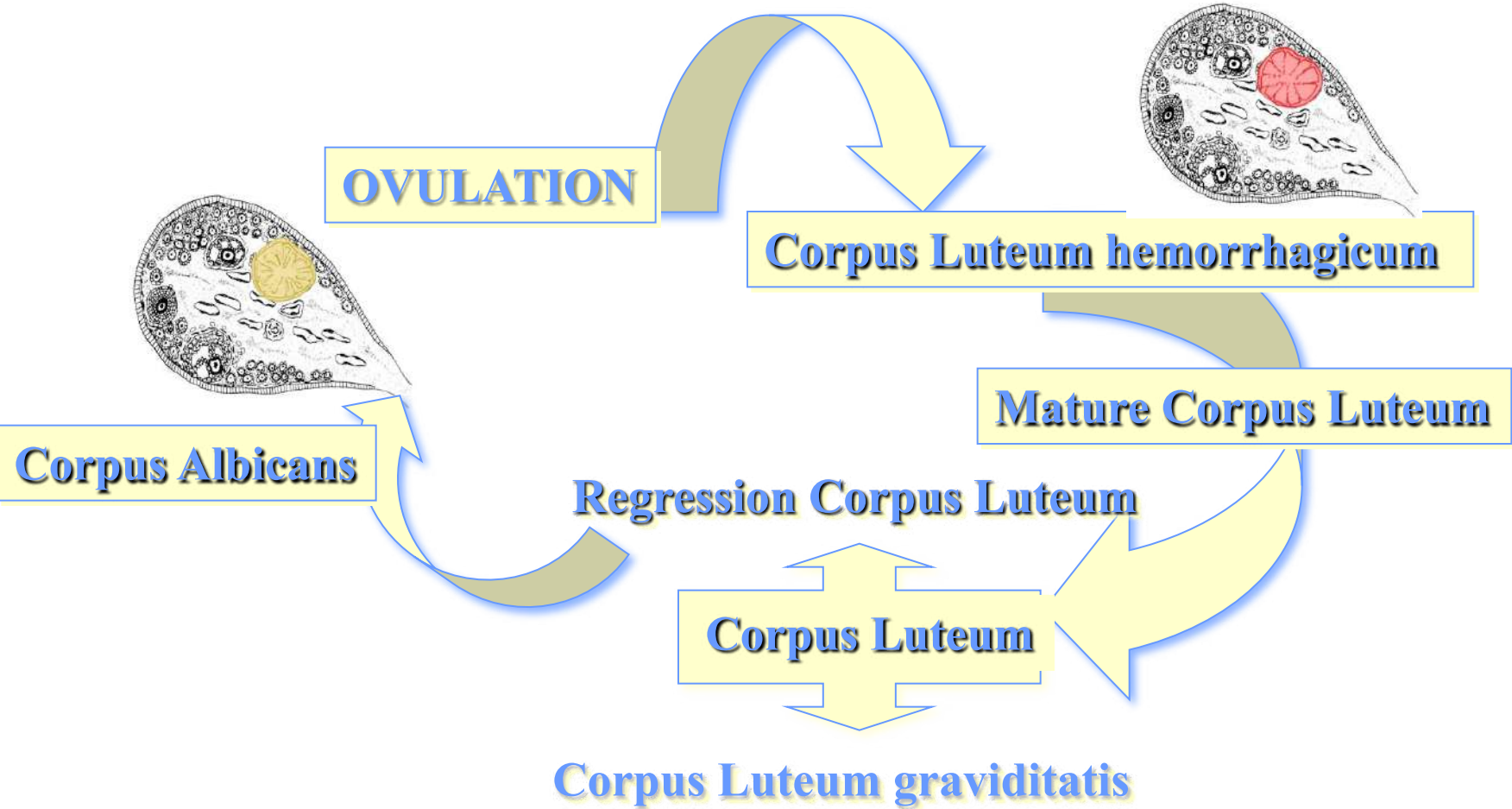


OVULATION

- An increase of intrafollicular pressure,
- Proteolytic enzyme activity on the follicular wall,
- Morphological changes in the stigma,
- Perifollicular ovarian smooth muscle contractions and
- Vascular modifications in the perifollicular vessels.

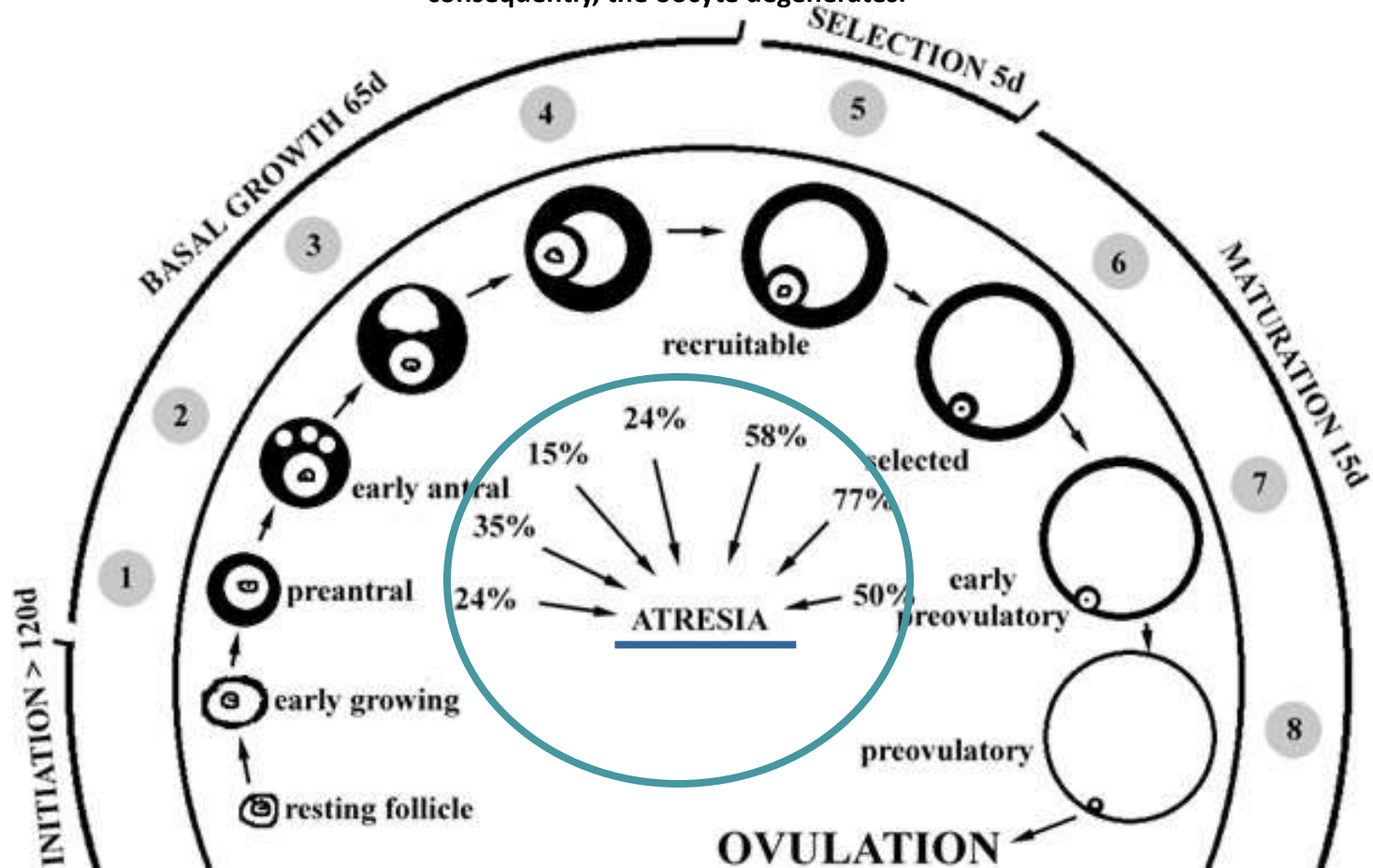
CORPUS LUTEUM





ATRETIC FOLLICLES

Degeneration of follicle (atresia) can occur at any stage of development. The granulosa cells undergo apoptosis and consequently, the oocyte degenerates.



Each reproductive cycle a pool of follicles will grow (folliculogenesis), but only one (mono-ovulatory species) or few (poli-ovulatory species) will ovulate; most of them will undergo to atresia

STAGES OF ATRESIA

Healthy (non-atretic) follicle

- many dividing granulosa cells (high mitotic index)
- No/very low % pyknotic granulosa cells
- follicle fluid “clean” without cell debris
- oocyte in the resting stage of prophase MI
- theca extensively vascularized

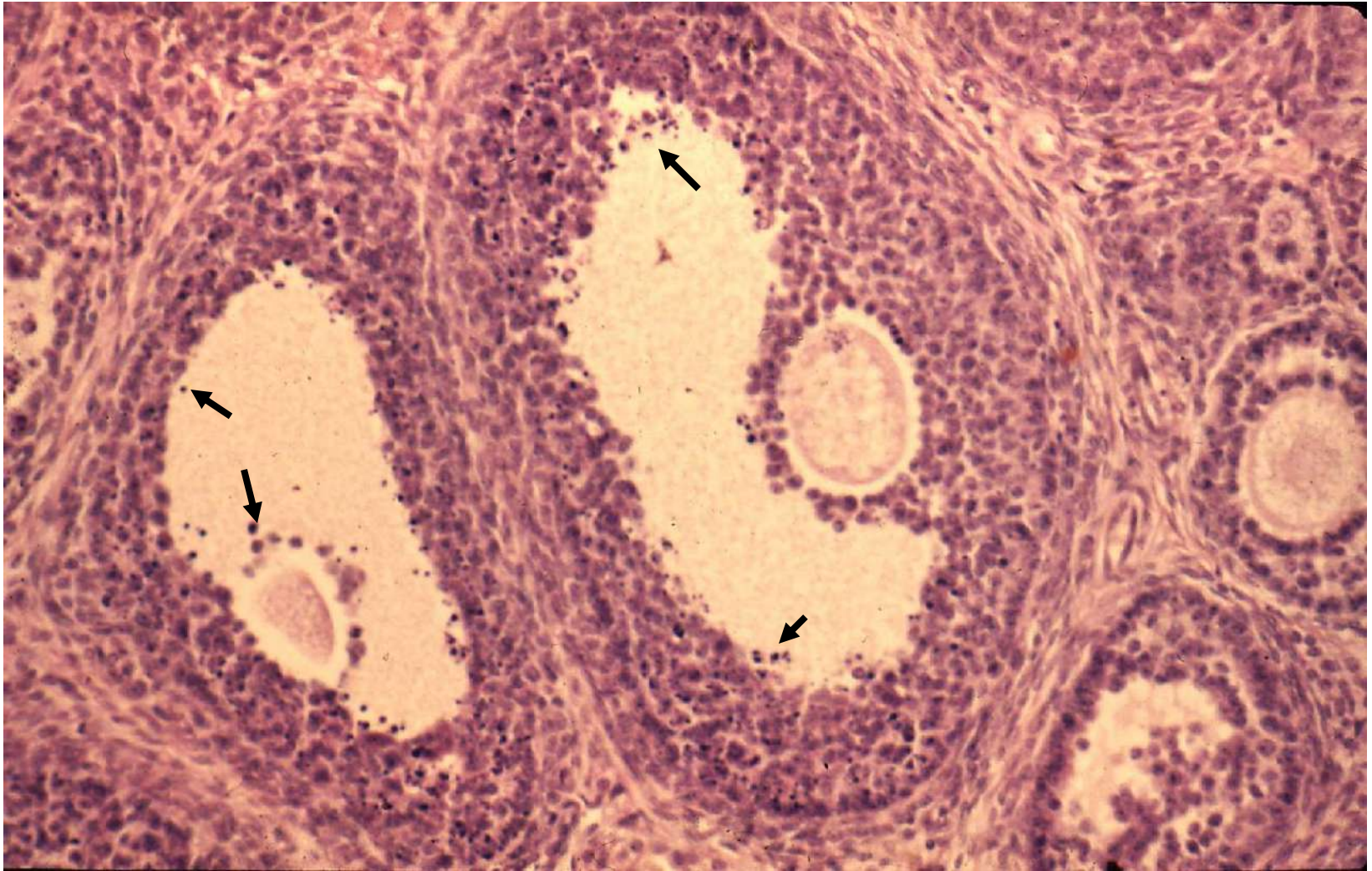
Atresia

- no dividing granulosa cells
- 10-30% pyknotic granulosa cells
- detachment of granulosa cells from basement membrane
- follicle fluid contains many cell debris or atretic bodies



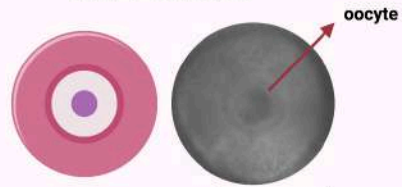
- reduction in number of granulosa cells
- oocyte fragmentation
- connective tissue invasion into follicle fluid
- follicle starts to collapse

Atretic follicles



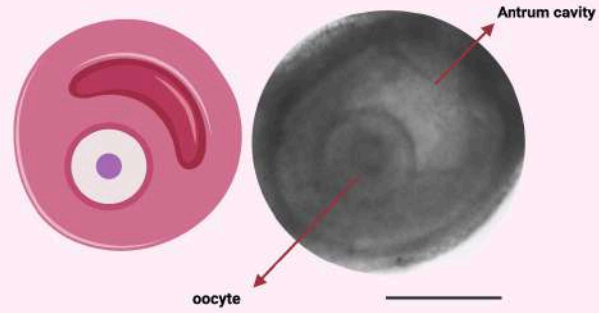
Detachment and apoptosis of granulosa cells

PA Follicle

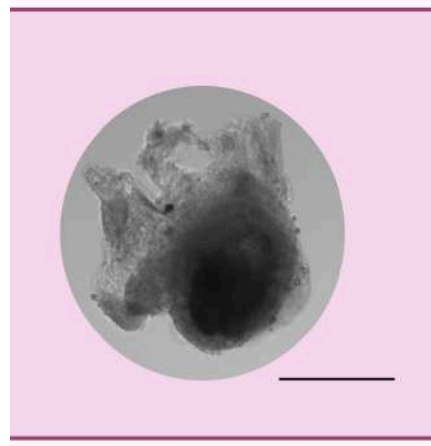


EA Follicle

Healthy ivF follicles

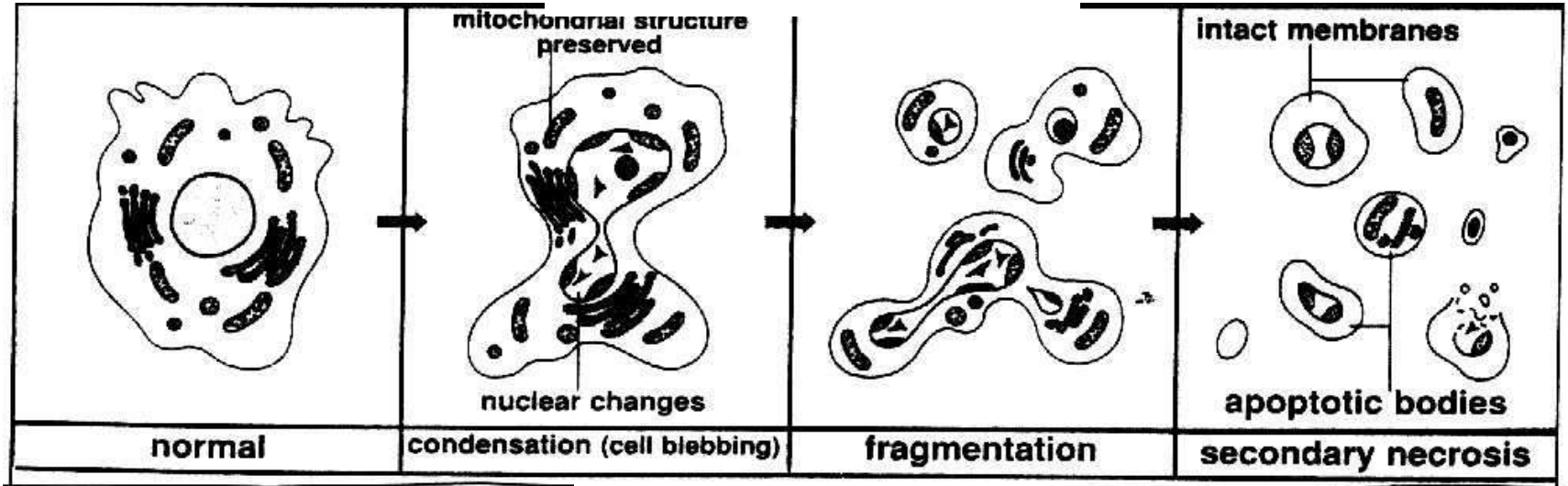


ATRETIC FOLLICLE

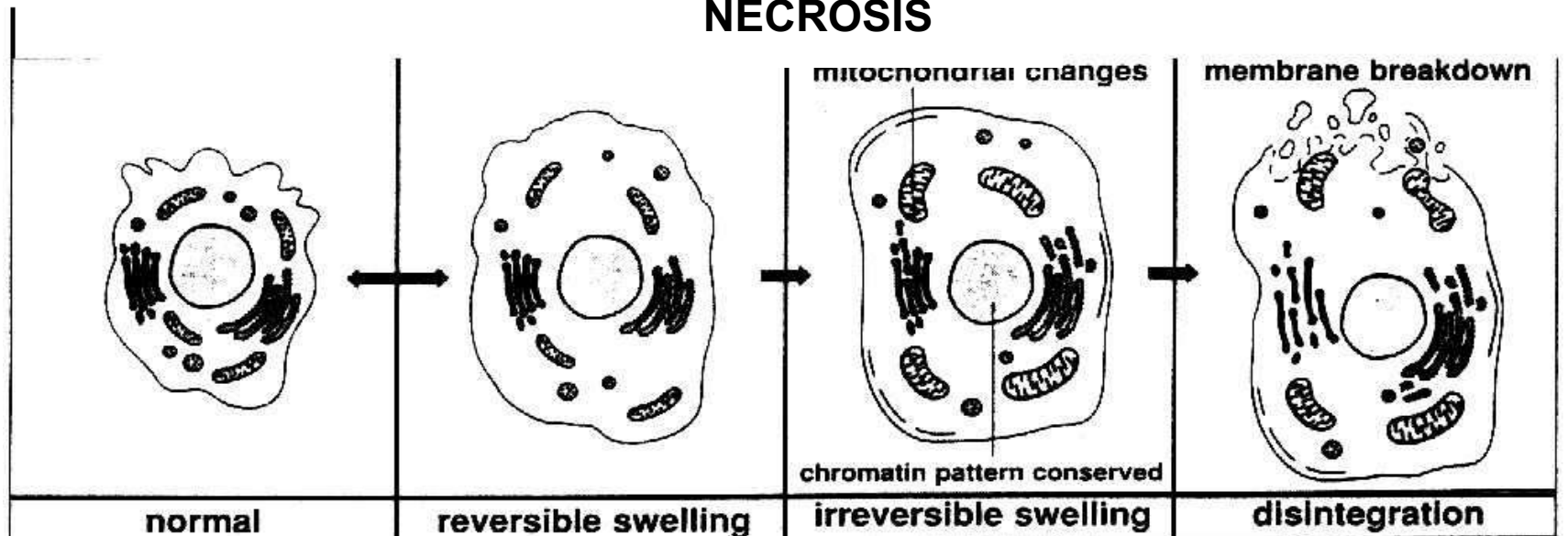


Apoptosis-programmed cell death

APOPTOSIS



NECROSIS



APOPTOSIS

AFFECTS SCATTERED INDIVIDUAL CELLS

CHROMATIN AND CYTOPLASMIC CONDENSATION

CELL SHRINKAGE

MAY REQUIRE mRNA AND PROTEIN SYNTHESIS

NORMAL ATP LEVEL

NO INFLAMMATION

ENDONUCLEASE ACTIVATION AND

DNA CLEAVAGE (ladder pattern)

NECROSIS

AFFECTS TRACTS OF CONTIGUOUS CELLS

CELL SWELLING AND RUPTURE OF PLASMA

MEMBRANE

NOT DEPENDENT UPON NEW mRNA OR PROTEIN

SYNTHESIS

DECREASED ATP LEVEL

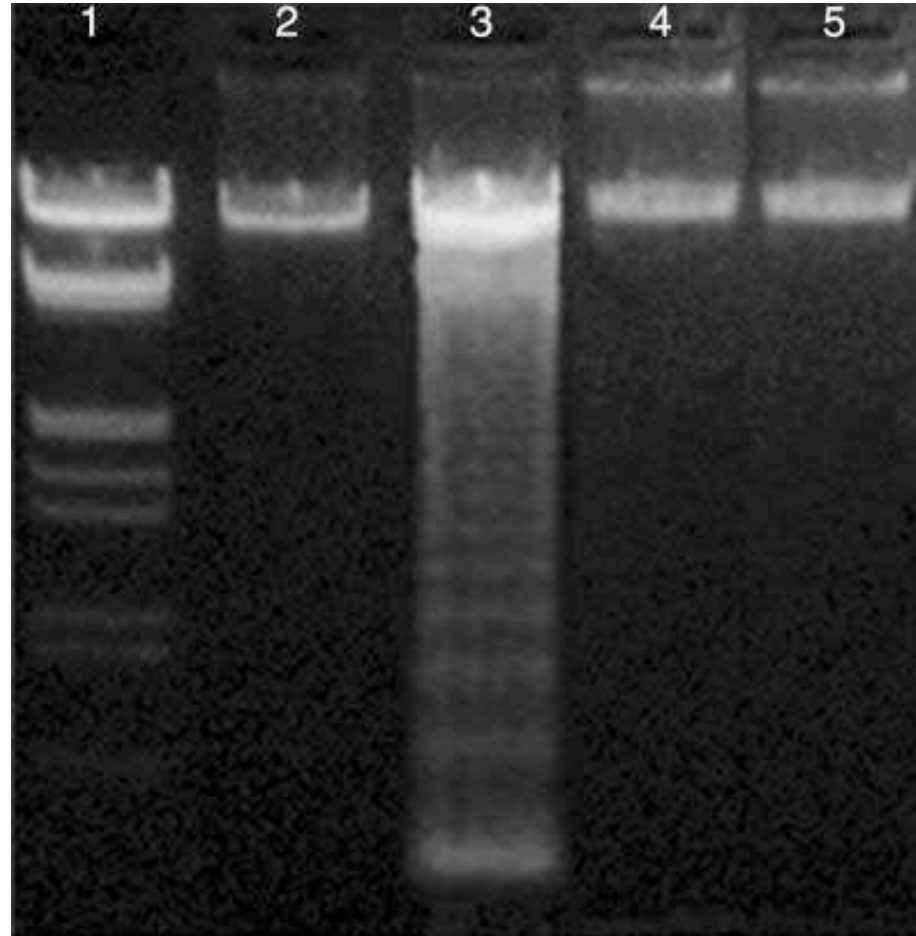
ELICITS INFLAMMATORY RESPONSE

ACTIVATION OF NONSPECIFIC Dnases

(smearing)

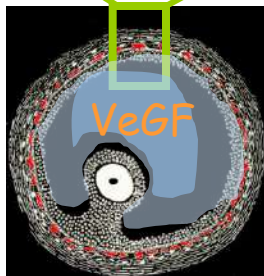
DNA FRAGMENTATION (ladder pattern)

Fig. 1. Analysis of extracted DNA from granulosa and theca layers of 4–5 mm antral and atresic follicles by 2% agarose gel electrophoresis with ethidium bromide staining. Lane 1: control (λ Eco/Hind); lane 2: healthy antral granulosa; lane 3: atretic granulosa; lane 4: healthy antral theca; lane 5: atretic theca.

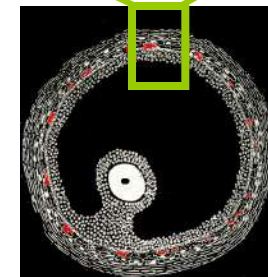


The **hallmark** of apoptosis is the presence of a typical **DNA fragmentation** that is identified by the appearance of a ladder pattern on gel electrophoresis. This gel indicates that the **cells involved in apoptosis** are for the most part **granulosa cells**.

Antral Follicle

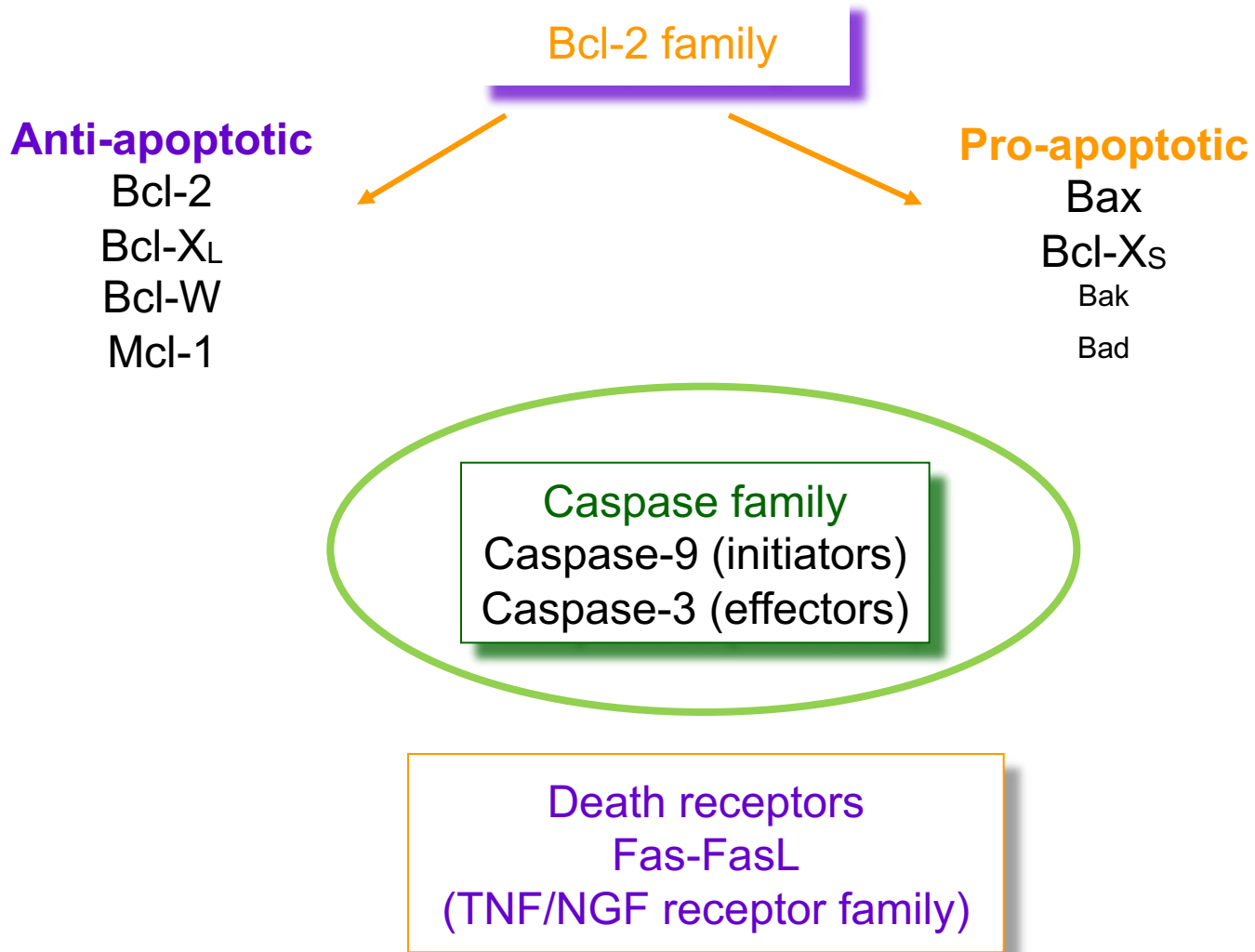


Atretic Follicle



The apoptotic process starts within the granulosa layer, as a consequence of the vascular changes that accompany the precocious signs of atresia that involve the **regression of the inner network** which is clearly of primary importance to the **survival or death** of the adjacent avascular **membrane granulosa**

APOPTOSIS IN FOLLICULAR GRANULOSA CELLS



Caspase3 - TUNEL

Intense Caspase-3 immunoreactivity was principally observed in the granulosa cells of early atretic follicles

