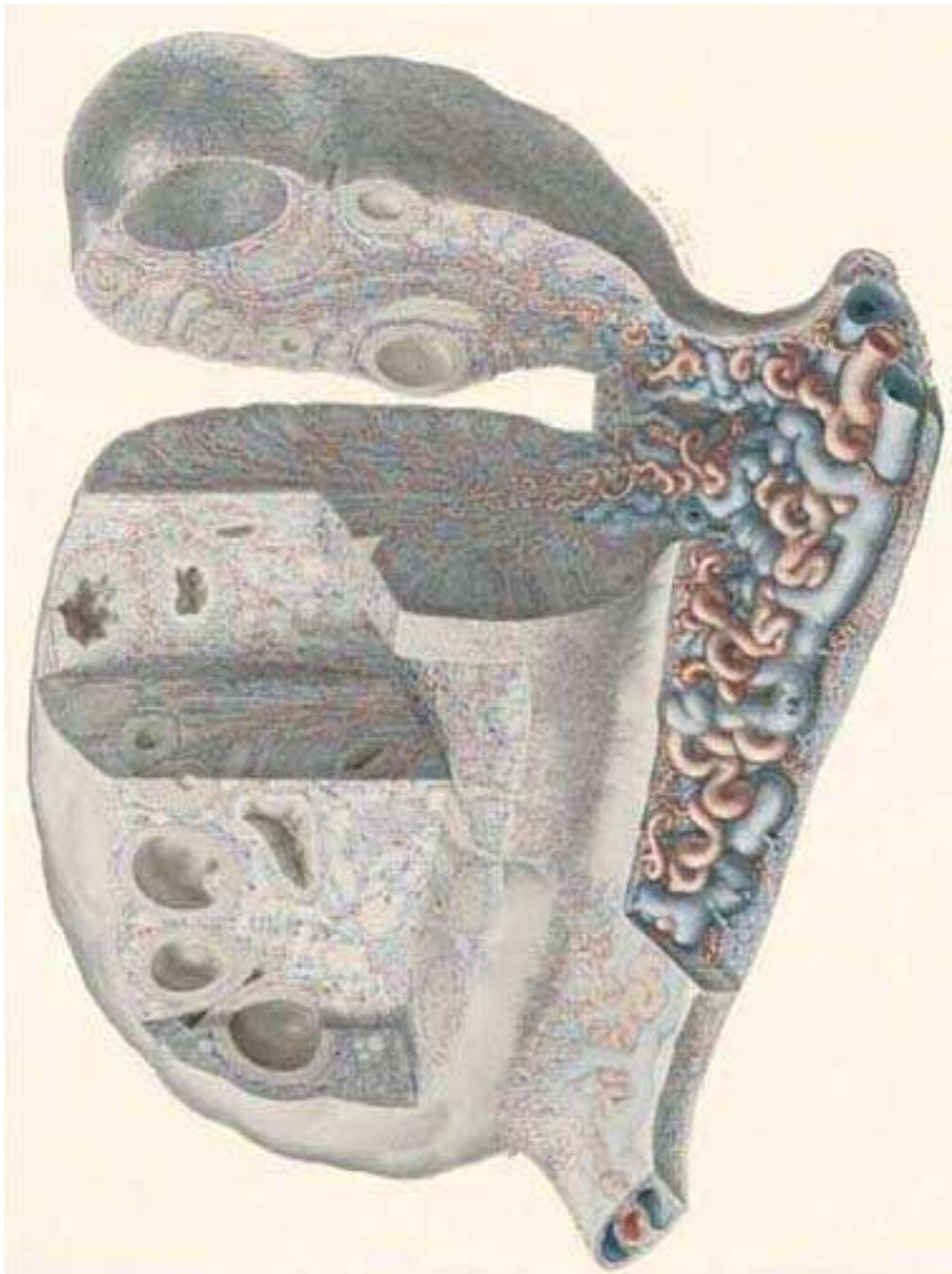
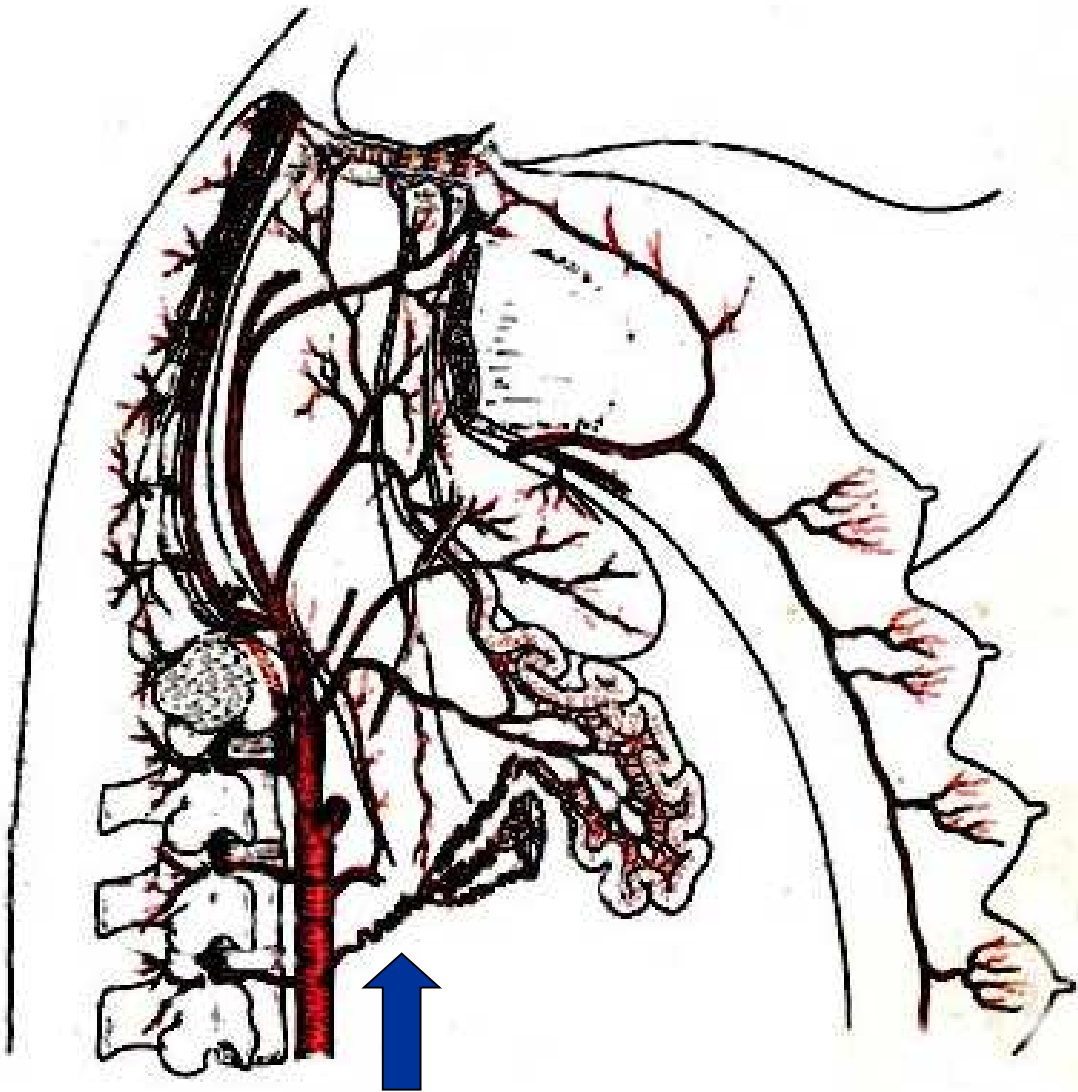
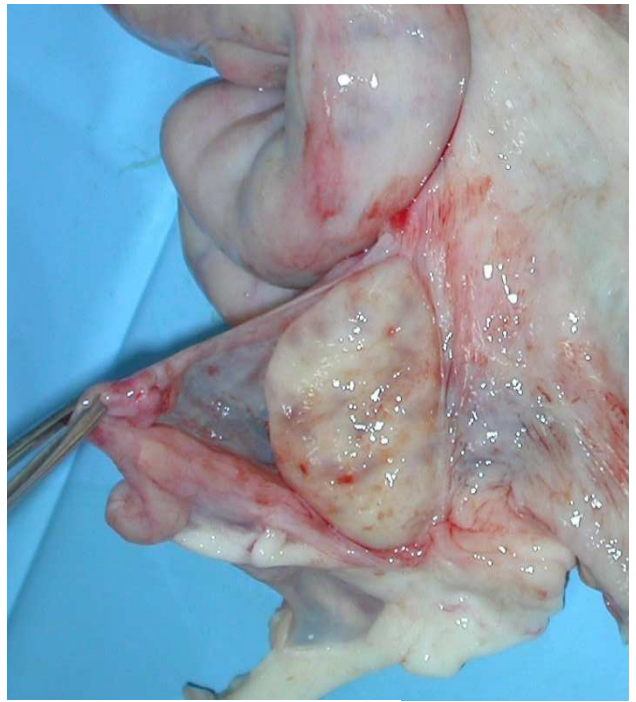
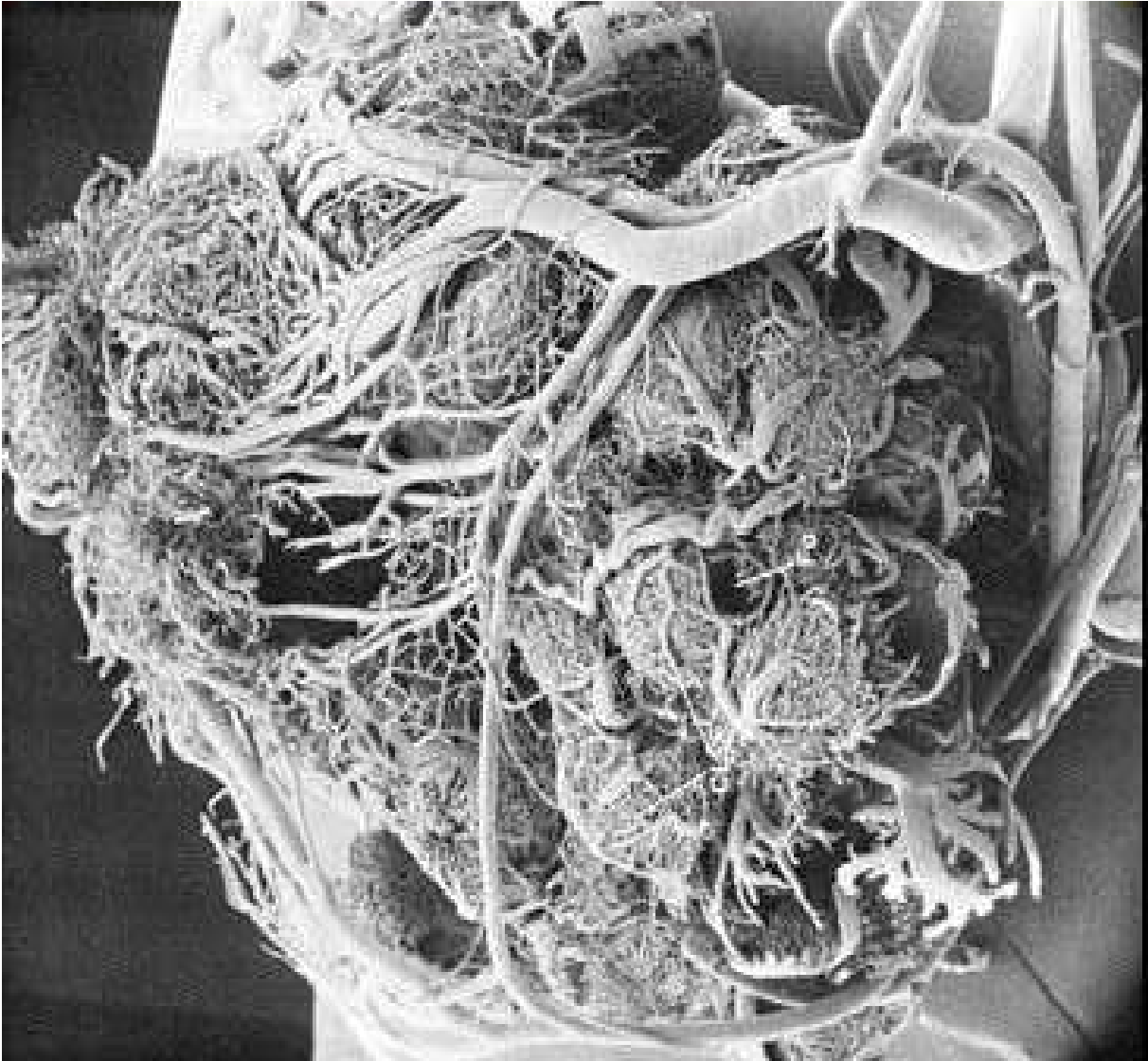


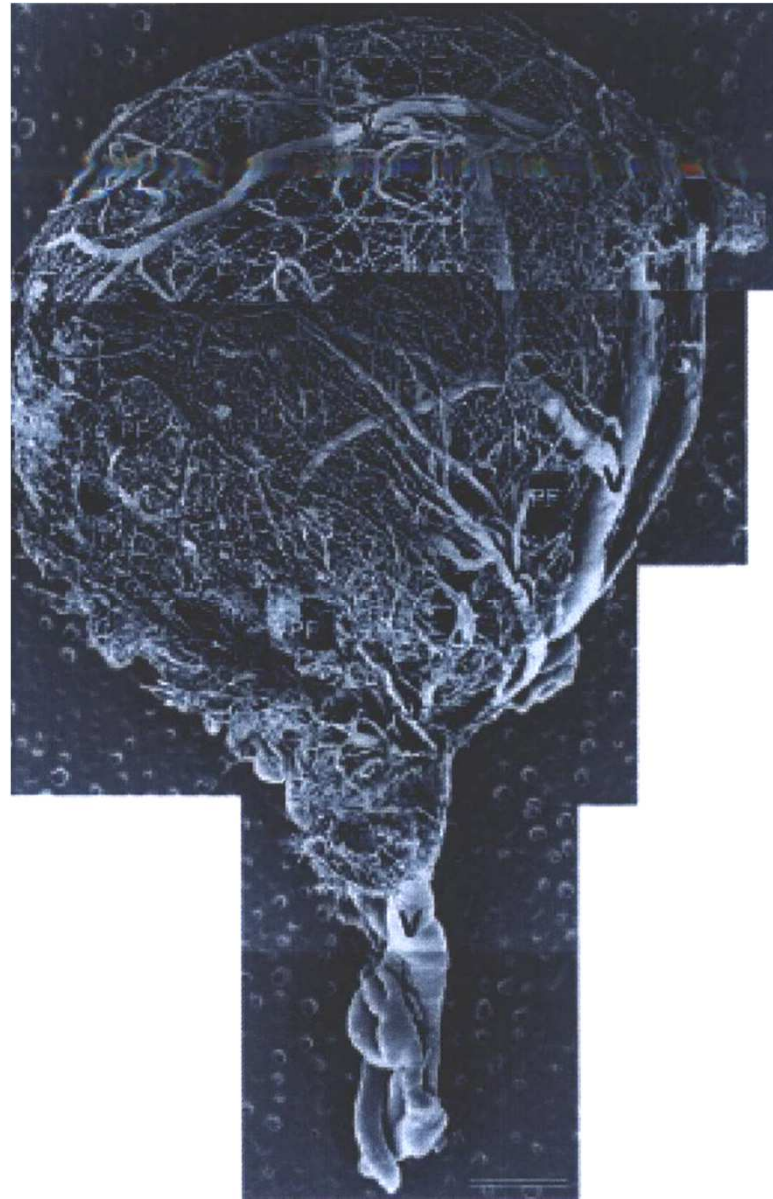
A black and white micrograph of an ovary section. The image shows a dense population of small, dark-staining cells, likely granulosa cells, surrounding a central follicle. A prominent, dark, wavy line, possibly a blood vessel or a layer of connective tissue, runs diagonally across the upper portion of the image. The overall texture is granular and cellular.

Ovarian folliculogenesis and angiogenesis

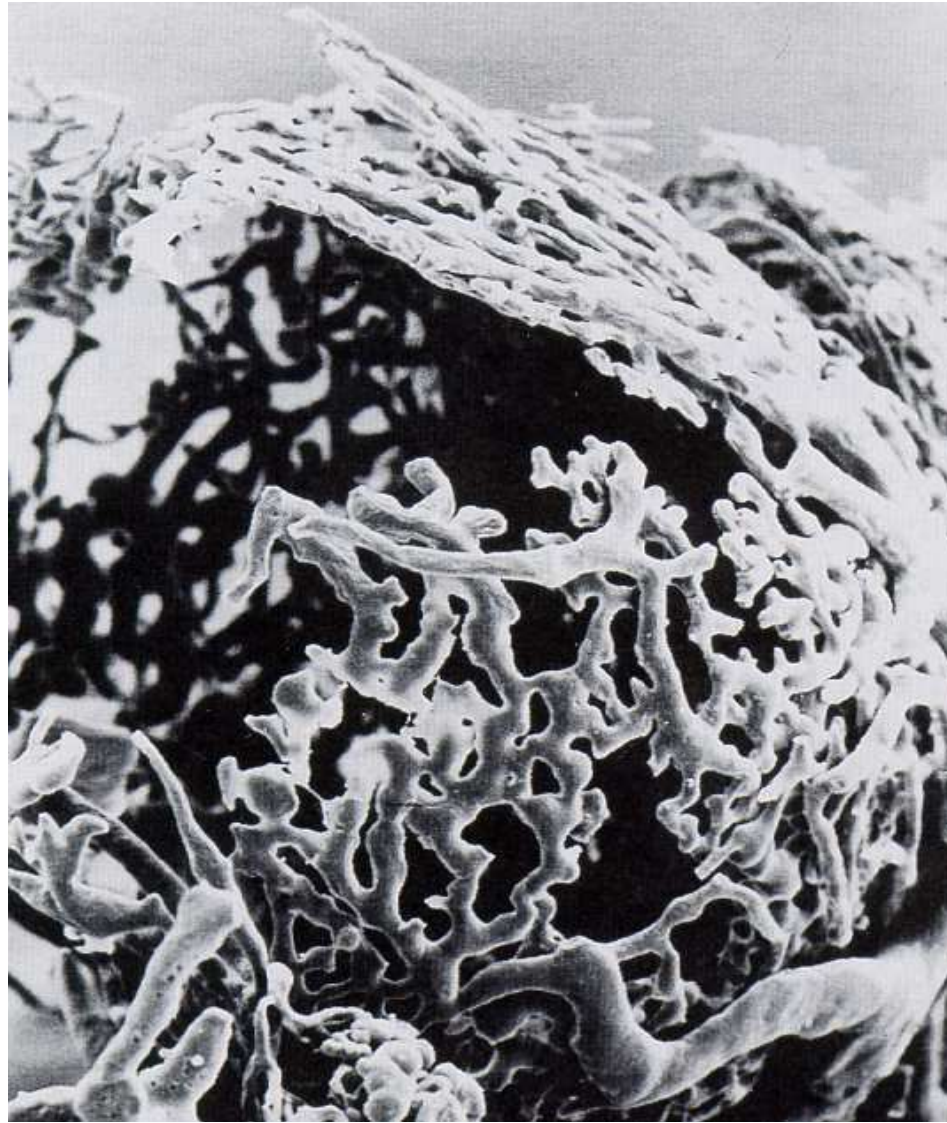






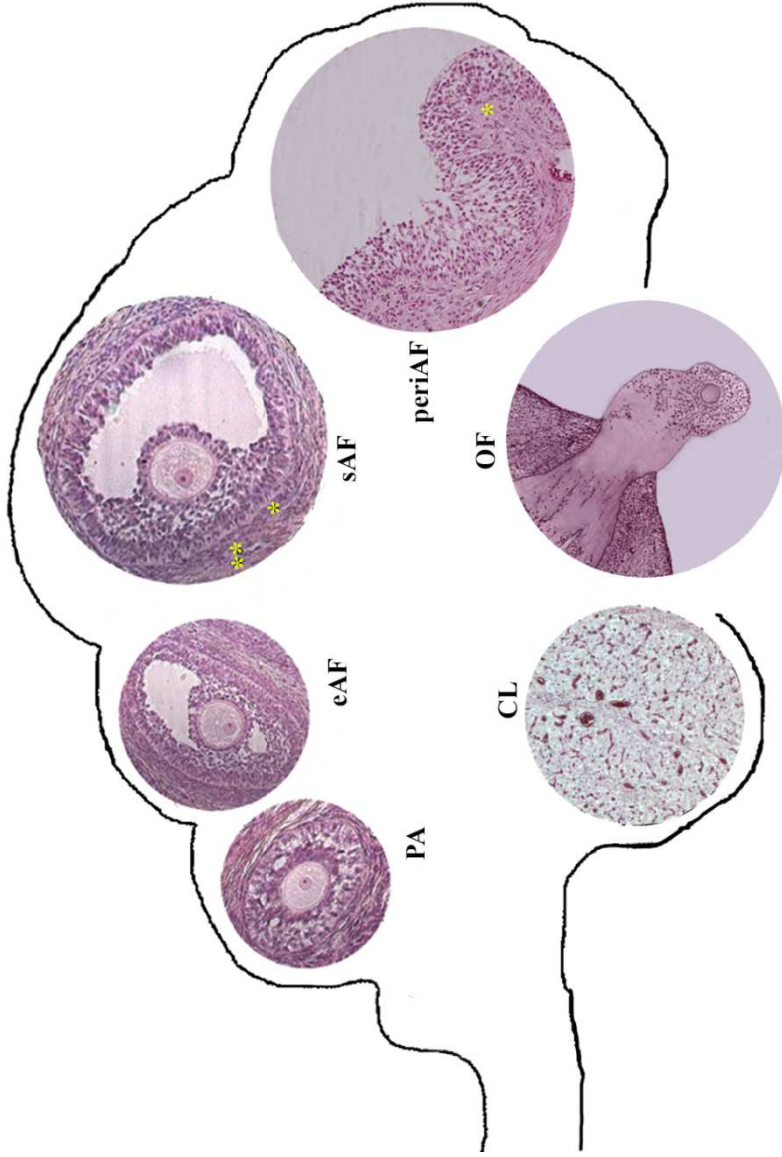


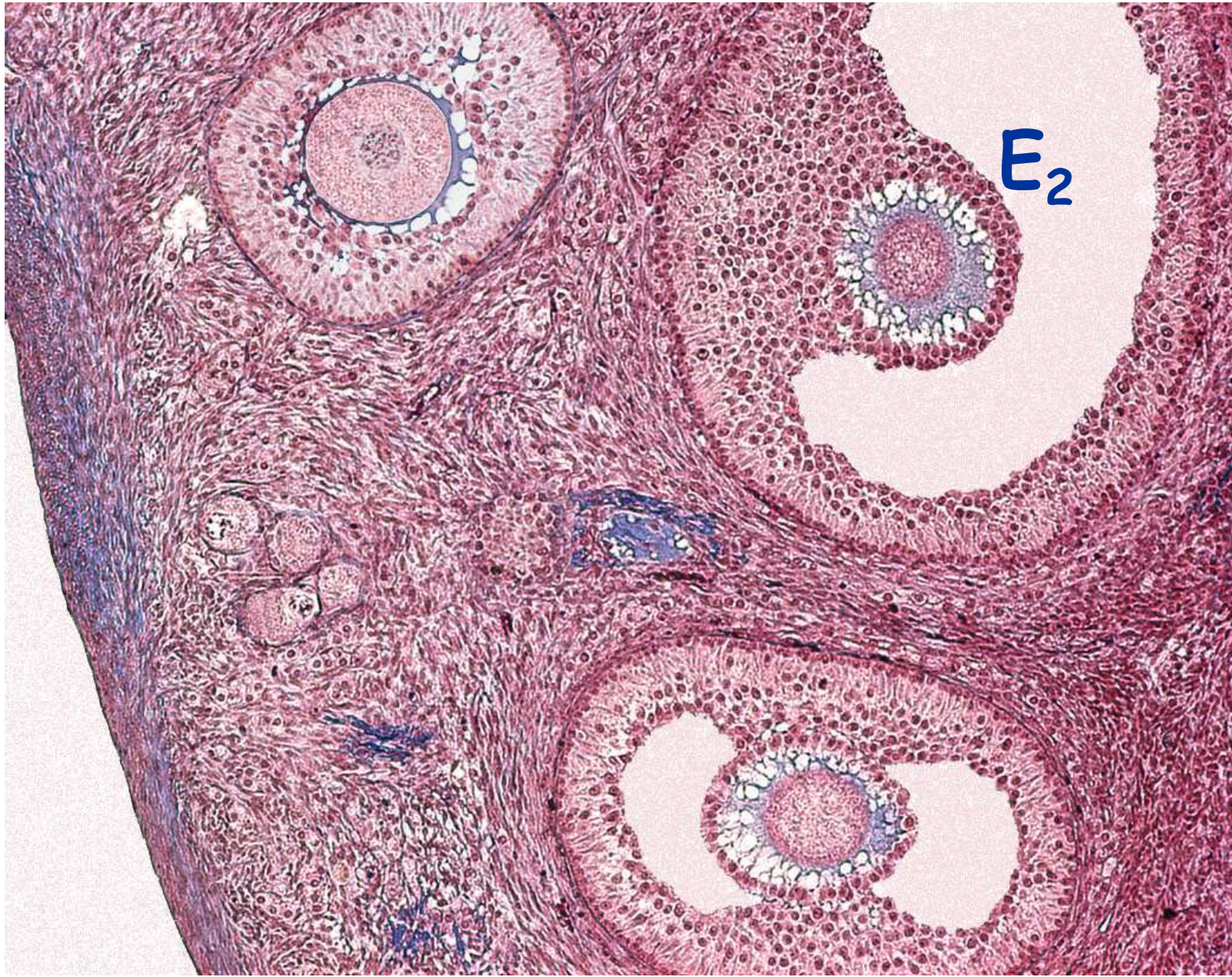
Jiang JY et al., Reproduction 2003; 125:211-23



da A.D. Forsman and J.T. Mc Kormack; *The Anatomical Record*, 1992

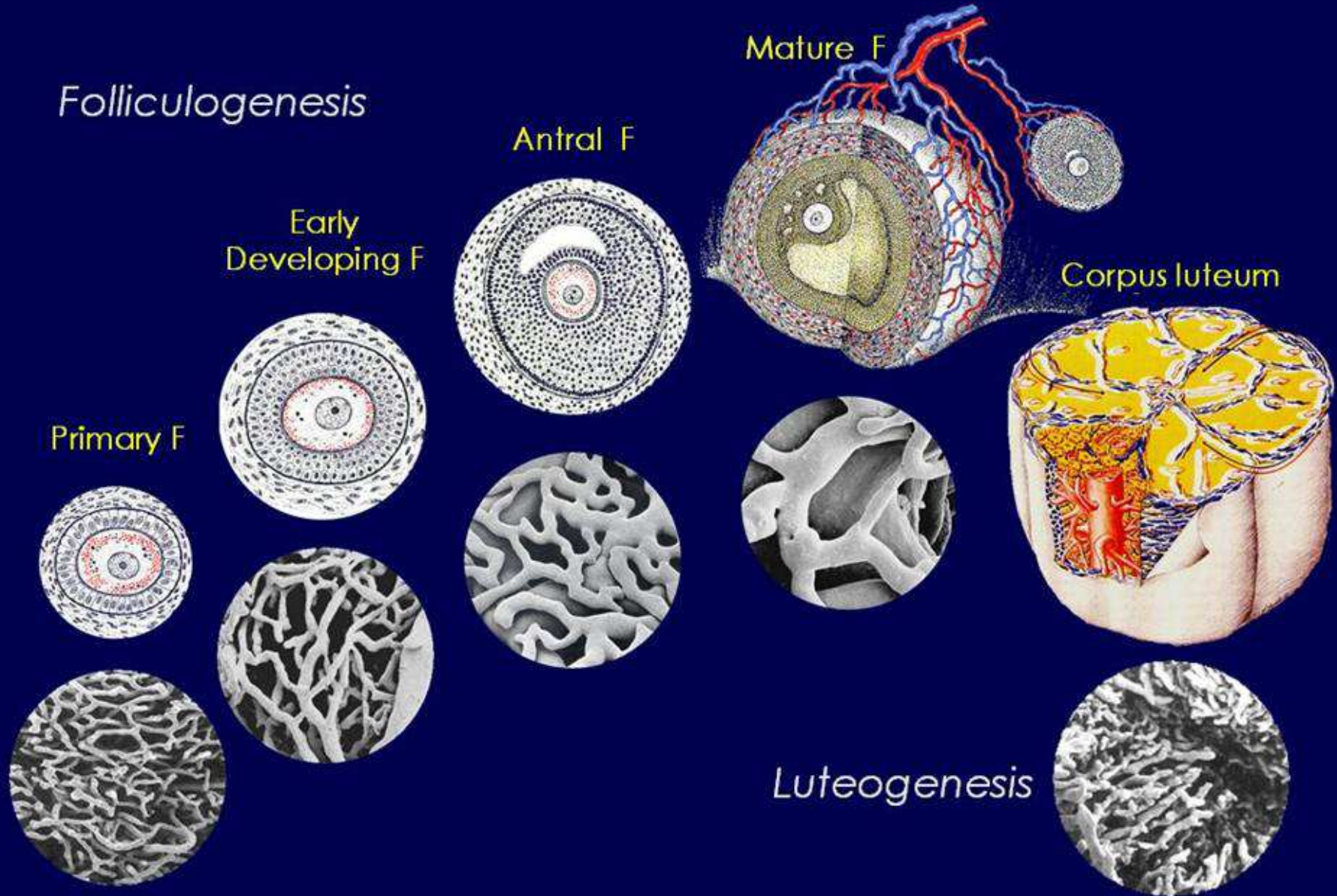
OVARIAN FOLLICULAR MORPHOLOGY



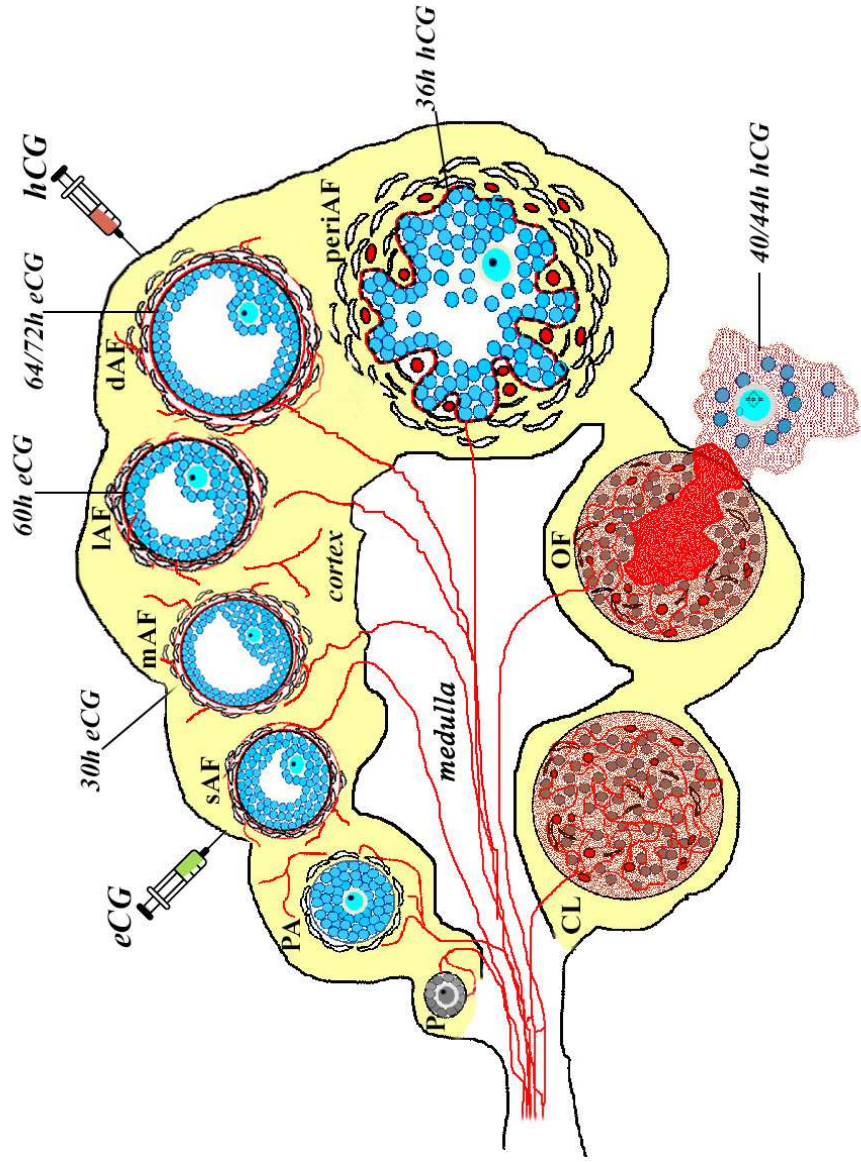


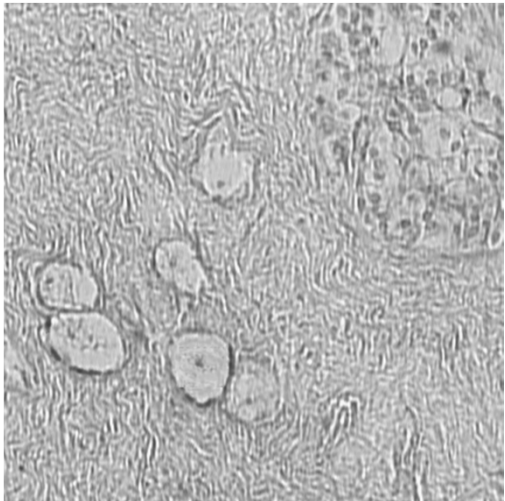
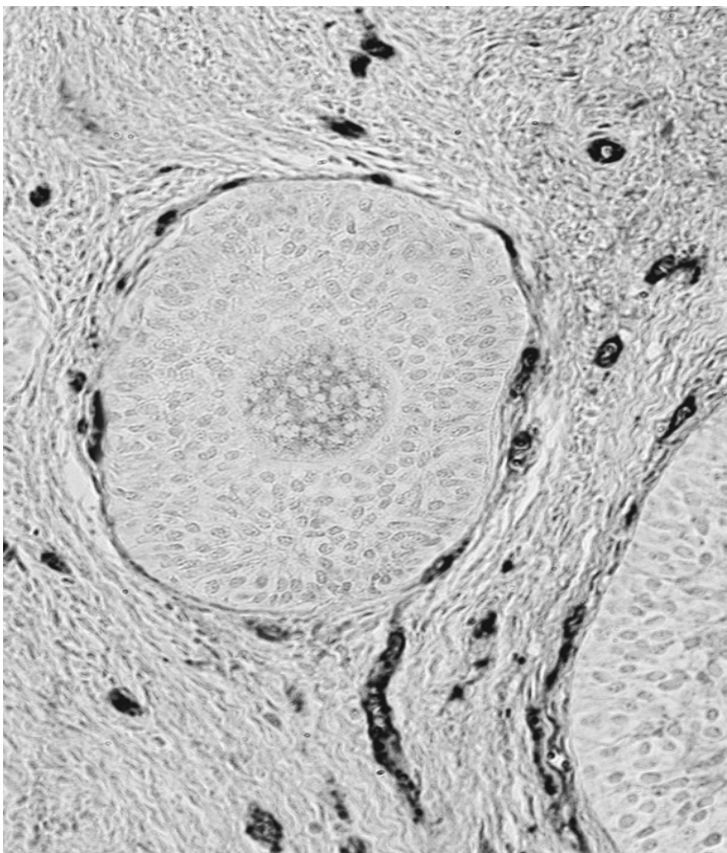
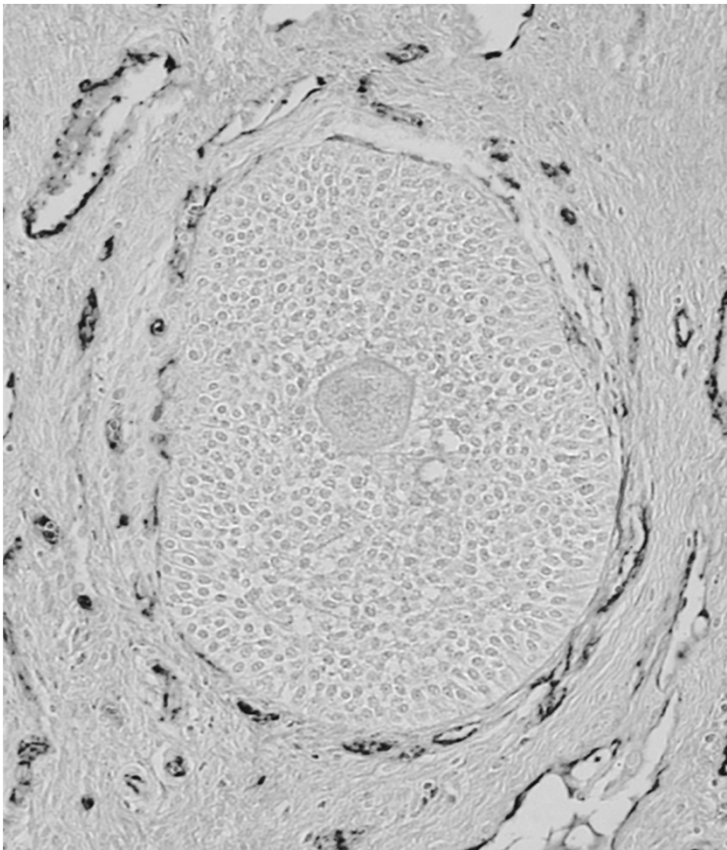
Factors influencing vascular remodeling in the ovary

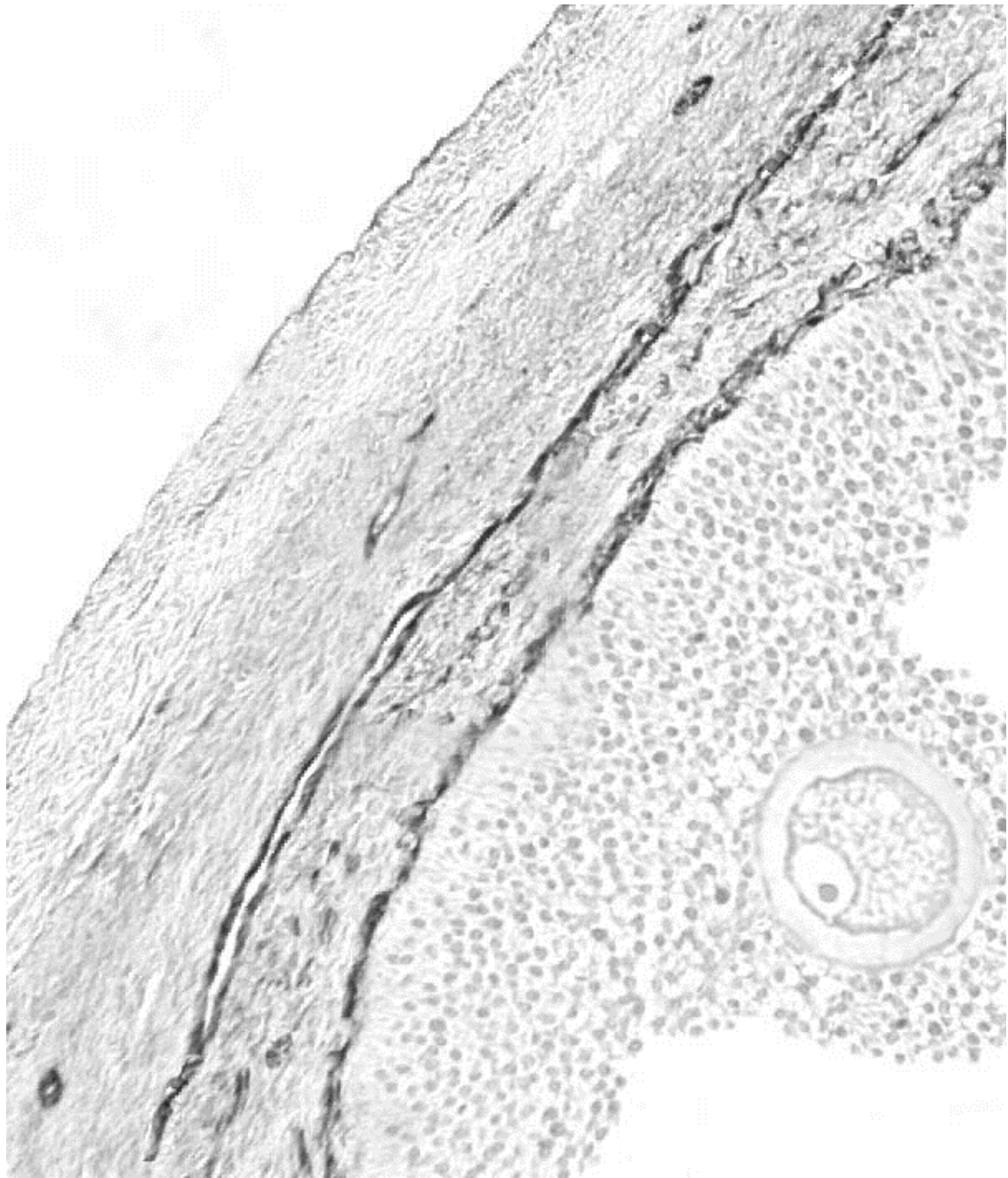
Folliculogenesis

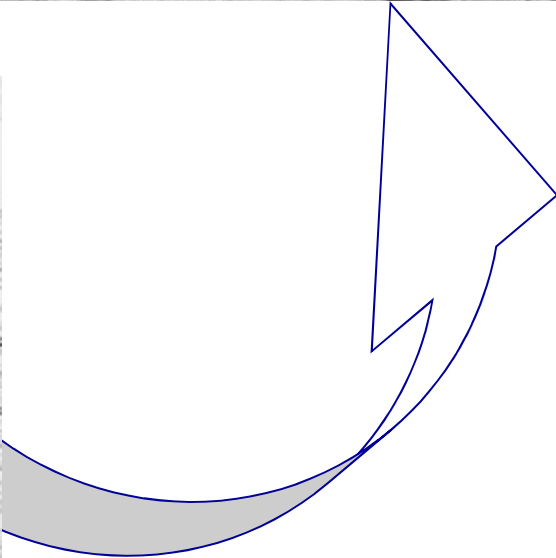
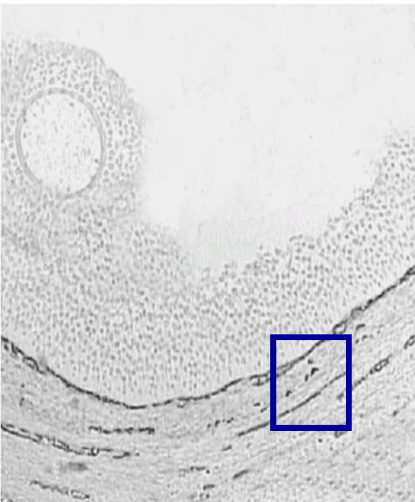
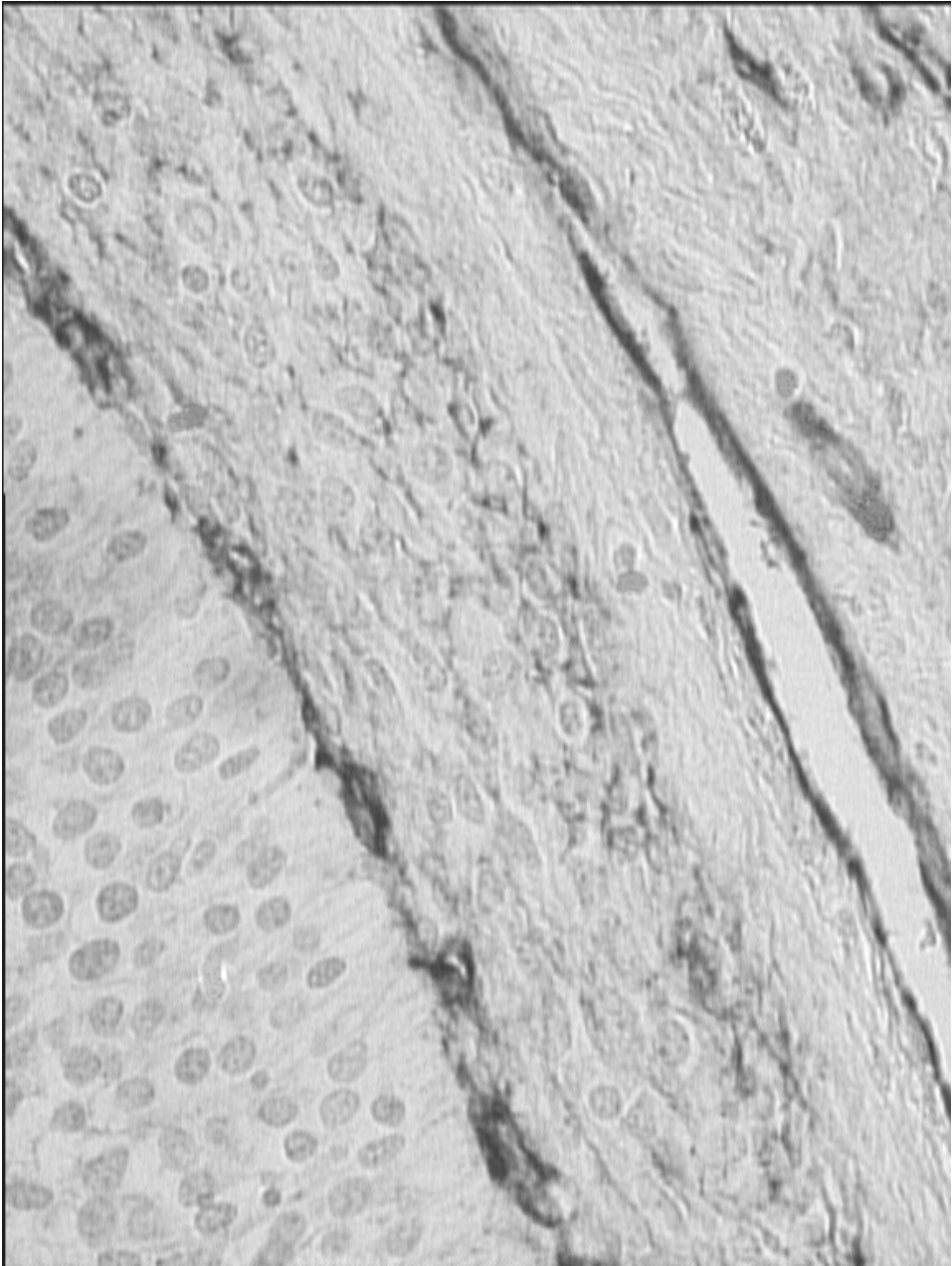


**OVARIAN FOLLICULAR PHASE
BY HORMONAL PHARMACOLOGICAL TREATMENT**

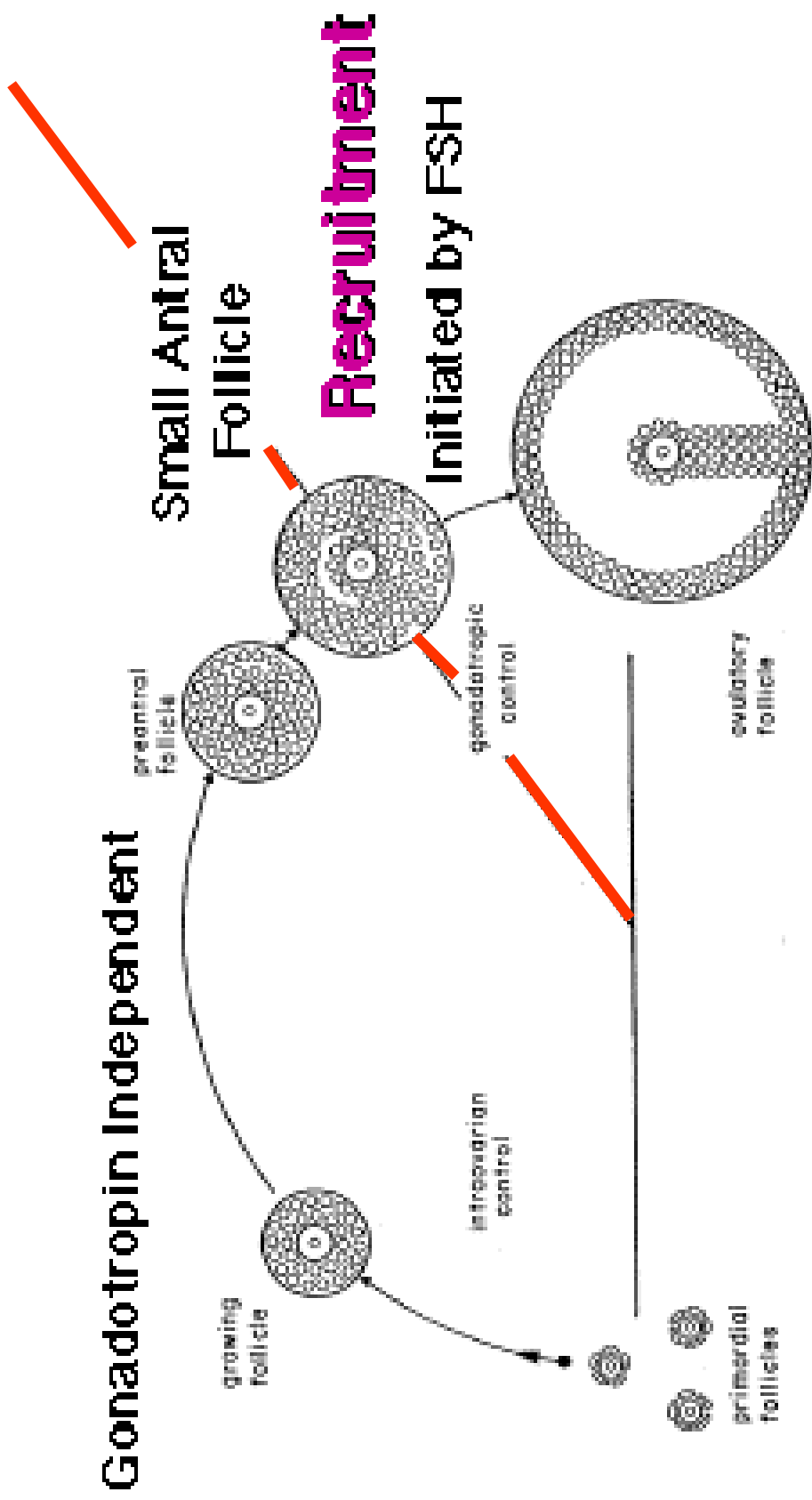


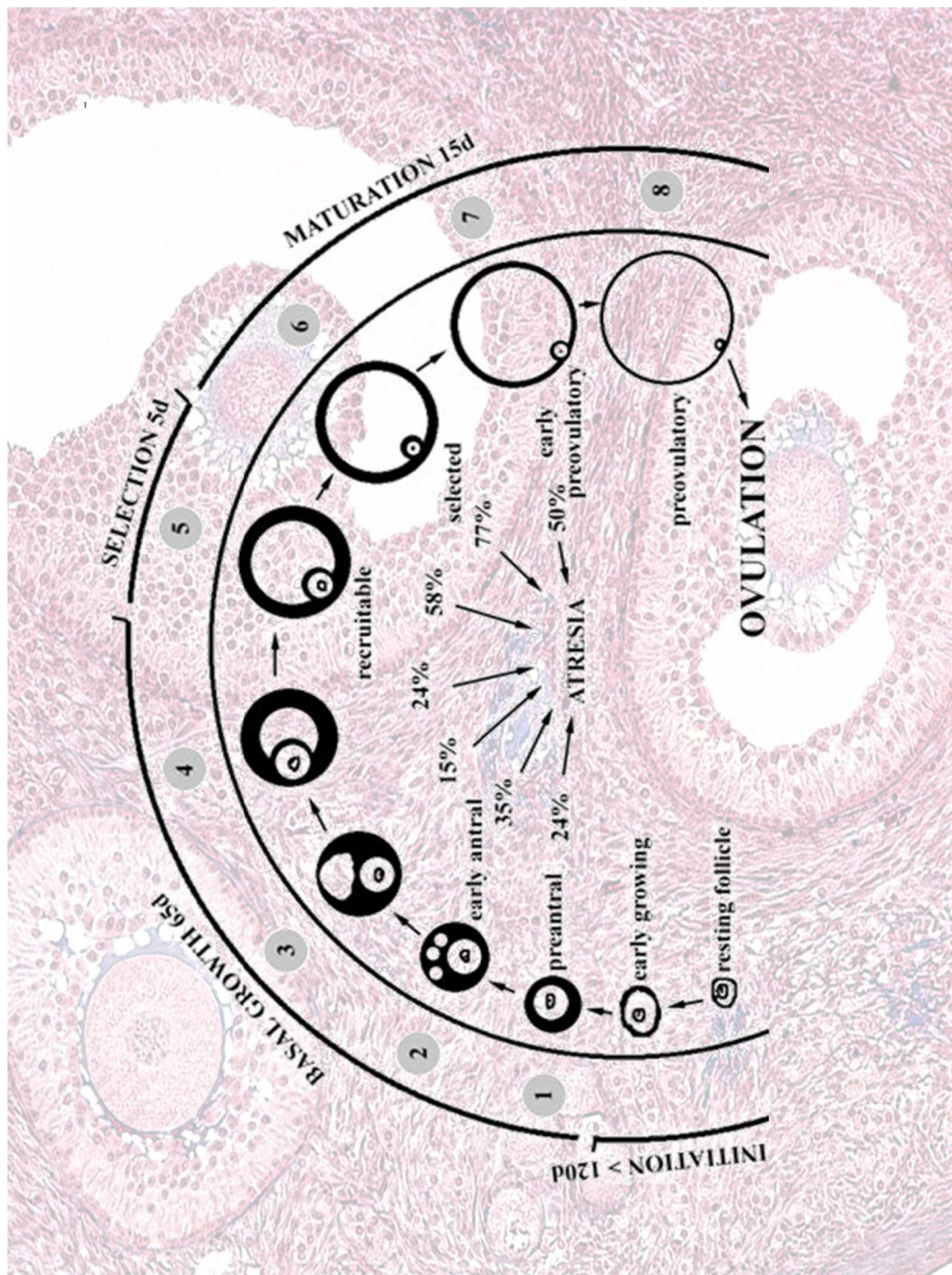




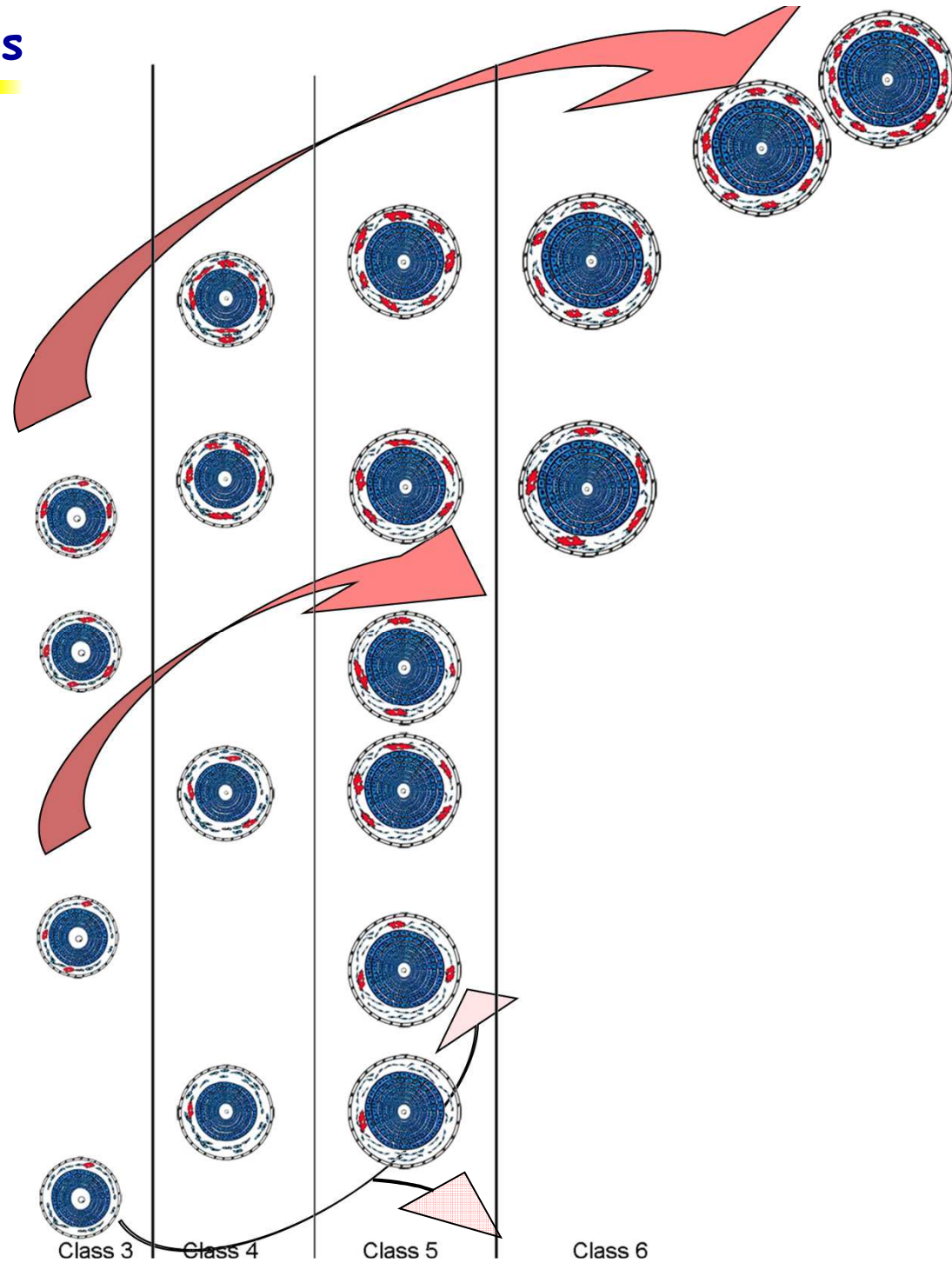


Follicular Growth



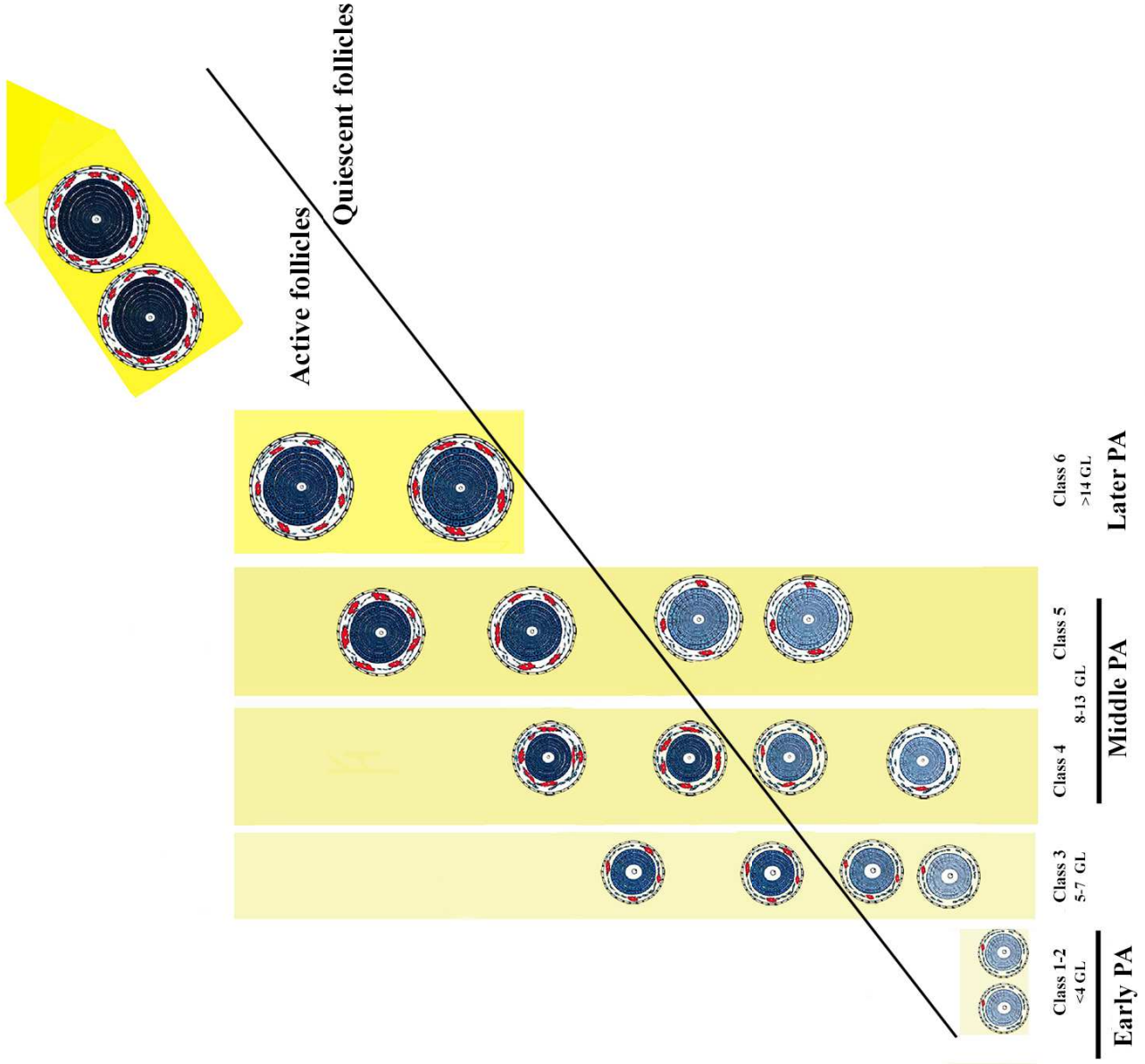


Preantral follicles



PI= proliferation index
VEGF
mRNA VEGF
VA= vascular area

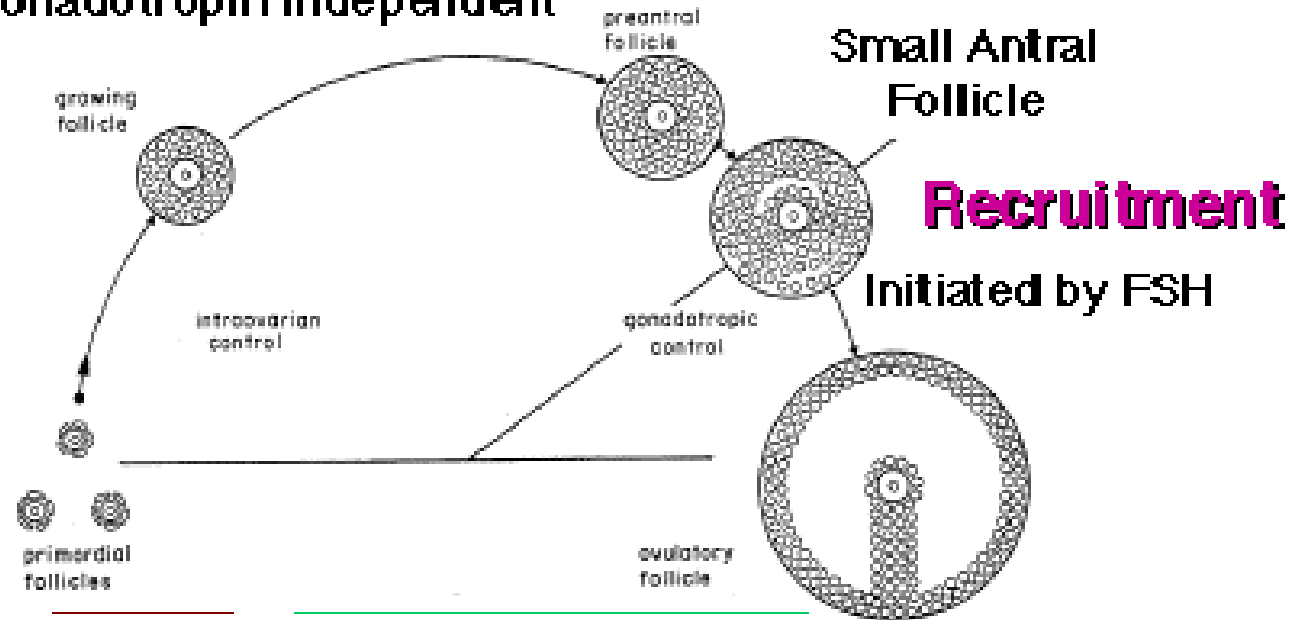
PREANTRAL FOLLICLES



SOW

Follicular Growth

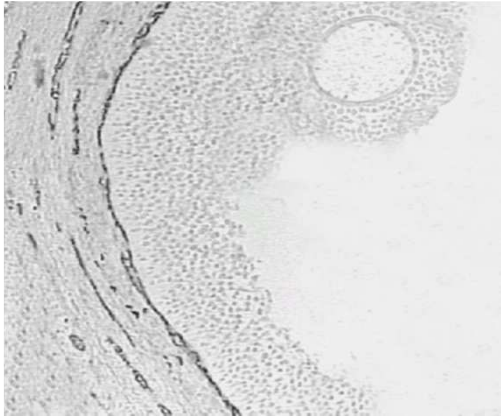
Gonadotropin Independent



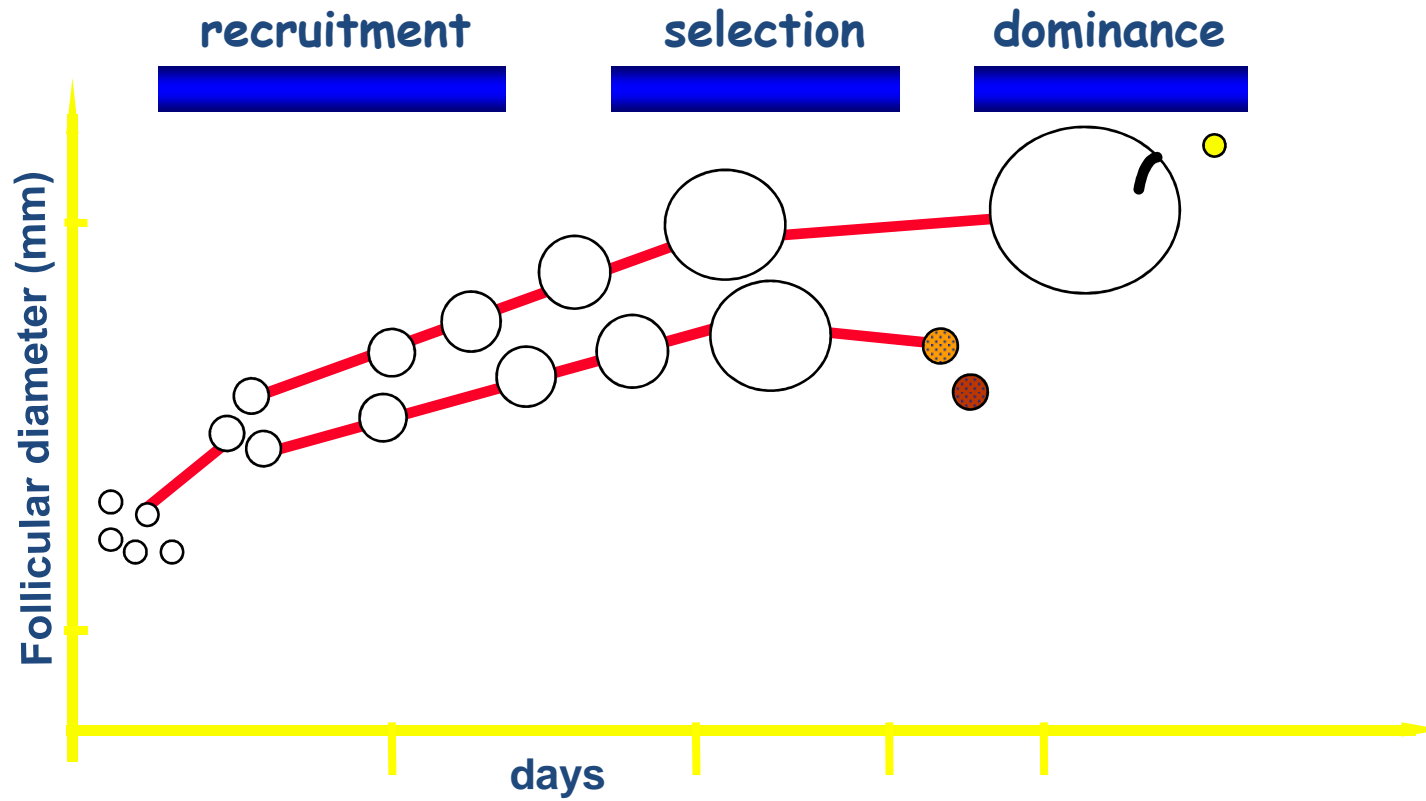
1°-2°=80ds

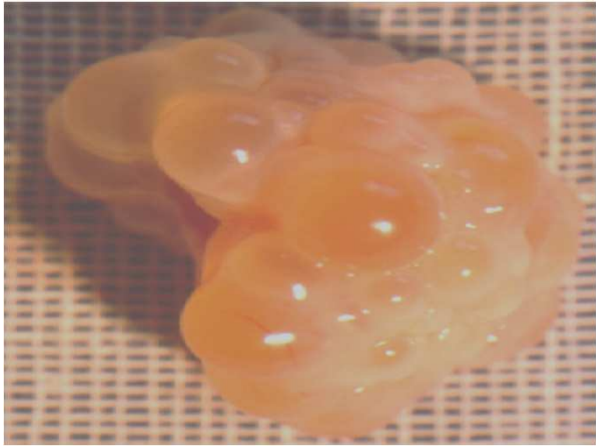
2°-SAF=3-4 week

Ciclo (SAF-LAF)=18-25ds

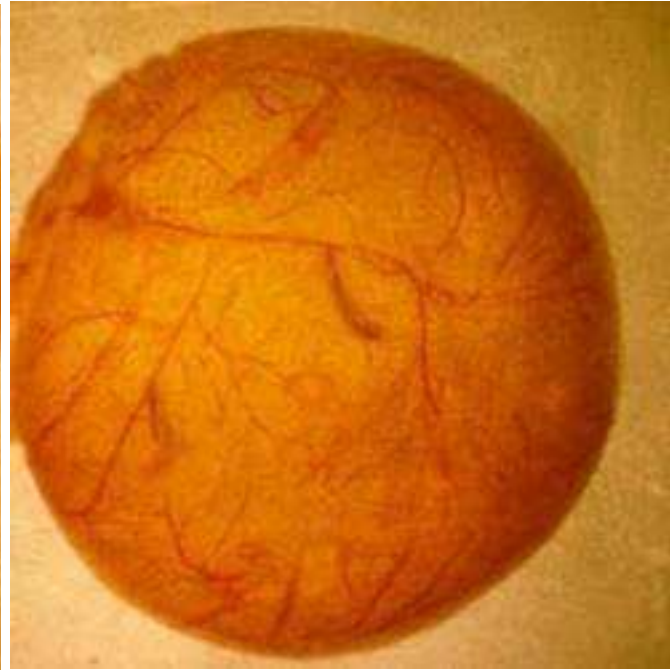
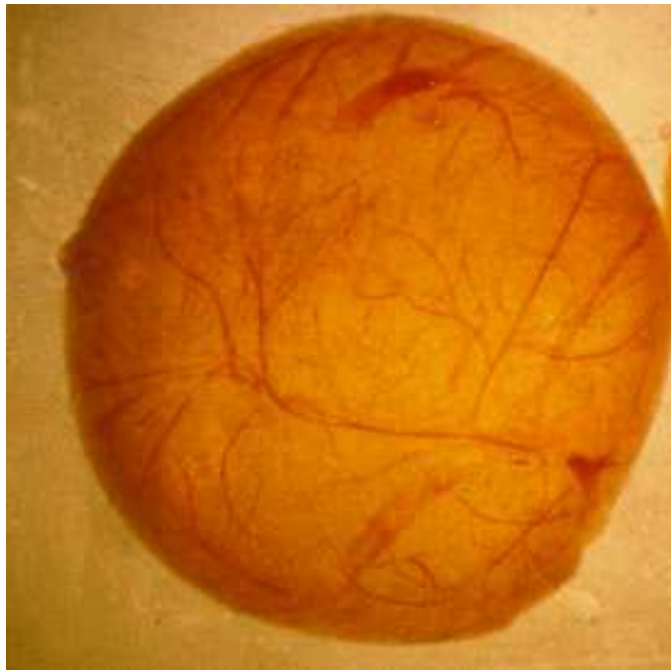


estrus cycle

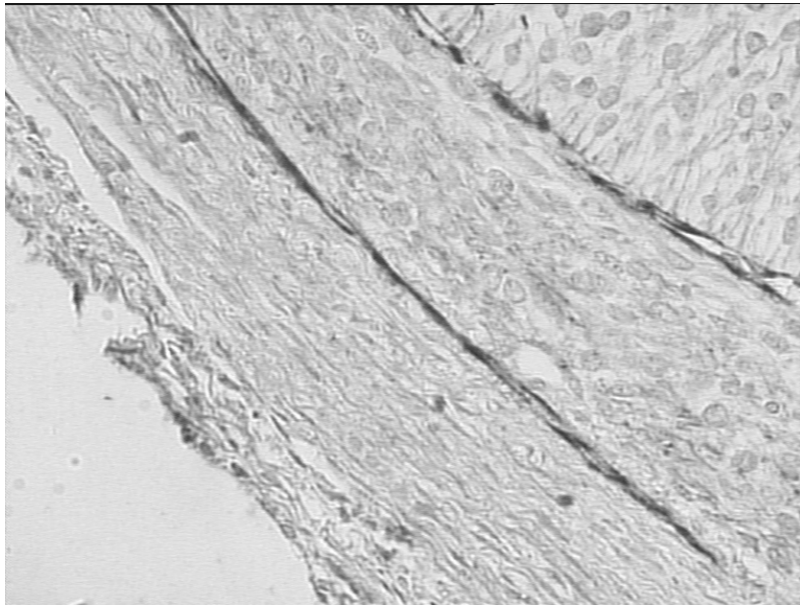




medium antral follicles

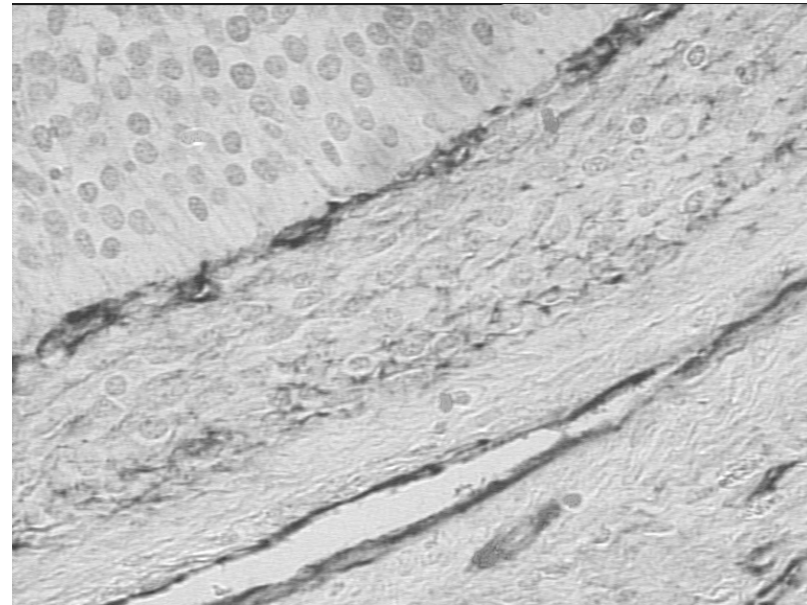


medium antral follicles



Total VA

1.29 ± 0.65

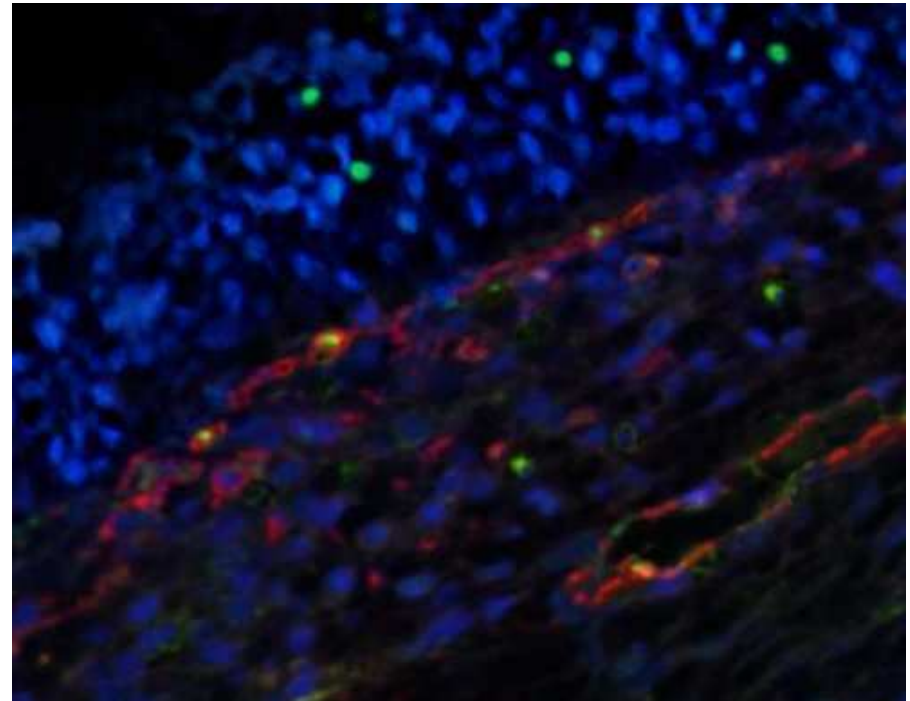
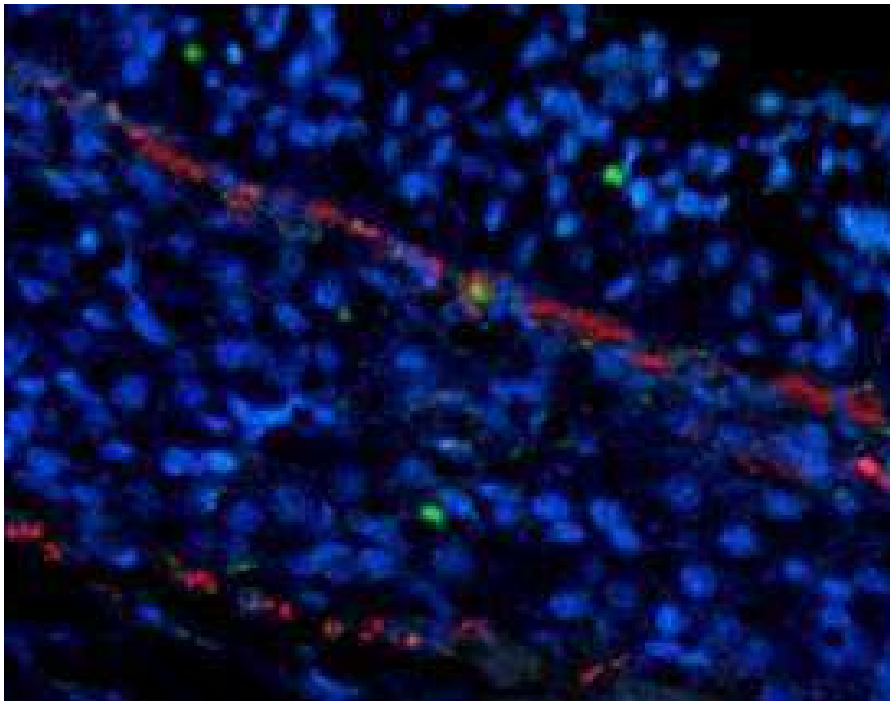


Total VA

$2.54 \pm 0.58 *$

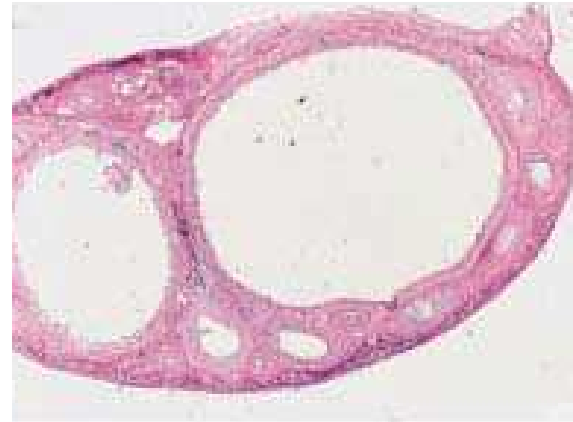
* P < 0.05

PROLIFERATION INDEX

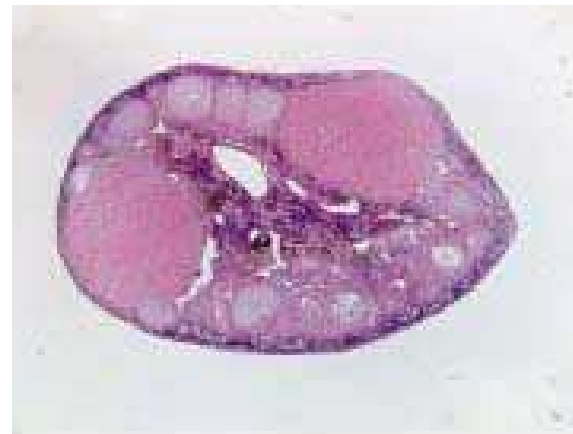


FvW
Ki-67
DAPI

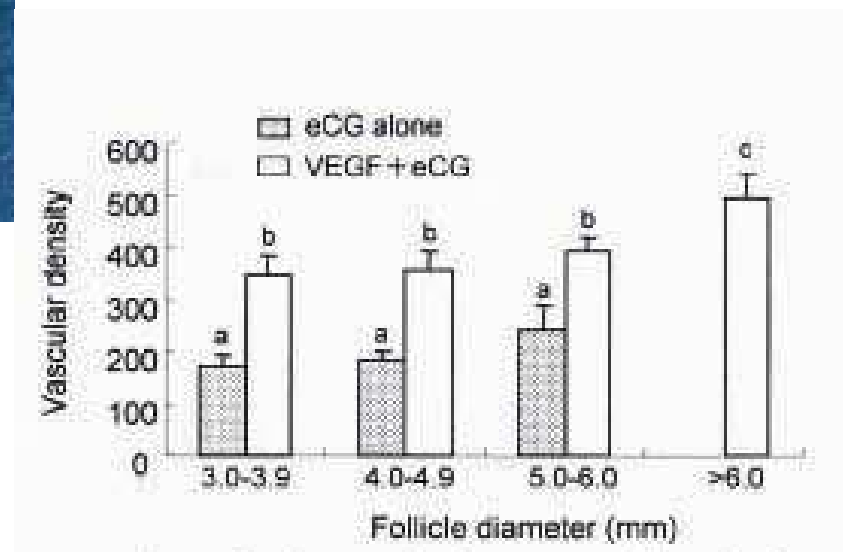
VEGF/VEGFR inhibitors



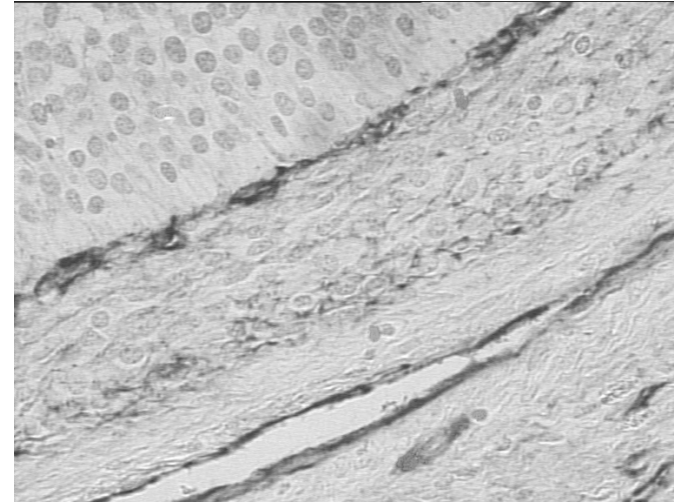
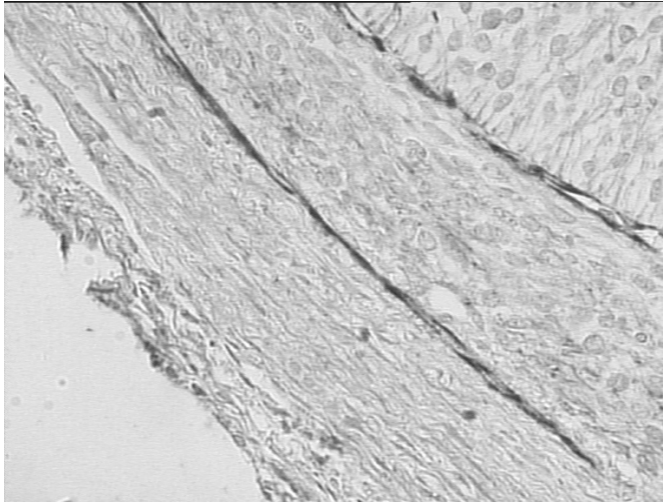
Follicular growth



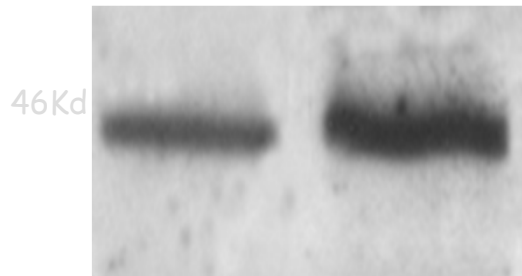
injection of VEGF gene fragments



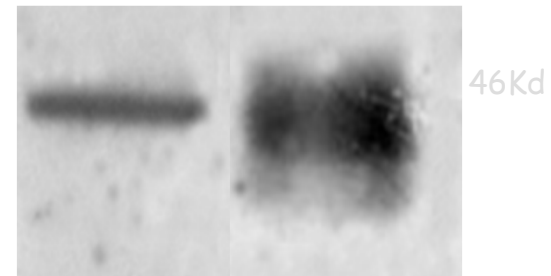
VEGF PROTEIN: granulosa-theca layers



Theca Granulosa

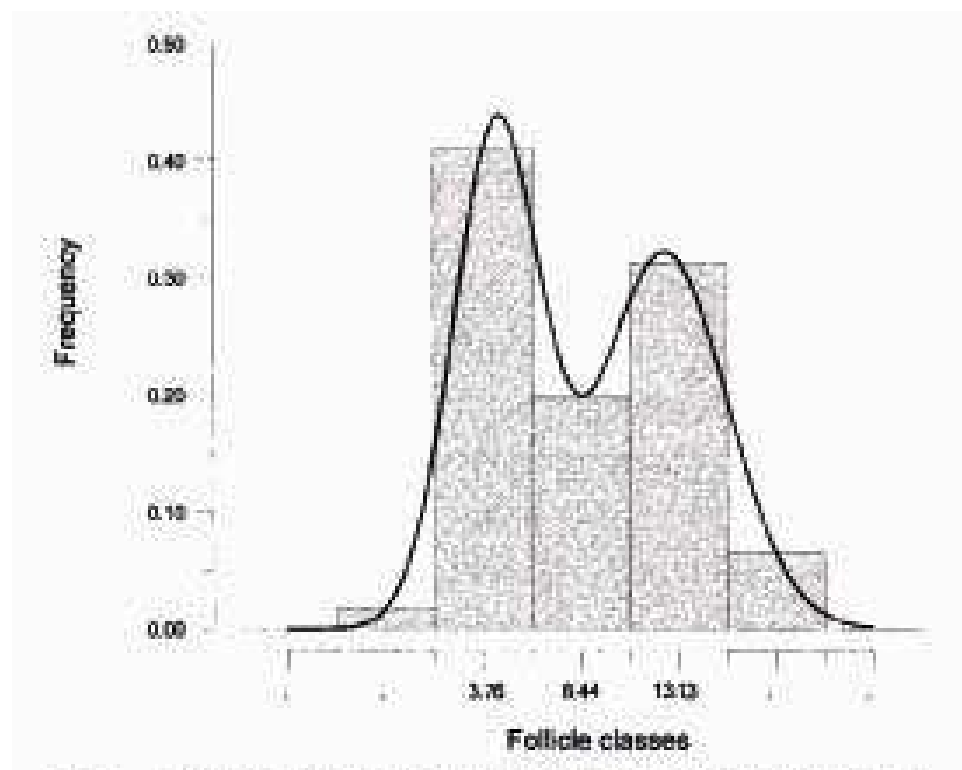
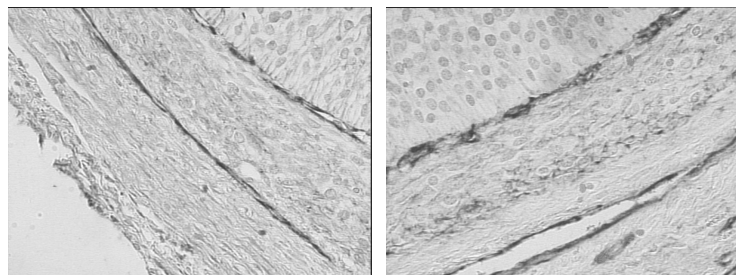


Theca Granulosa

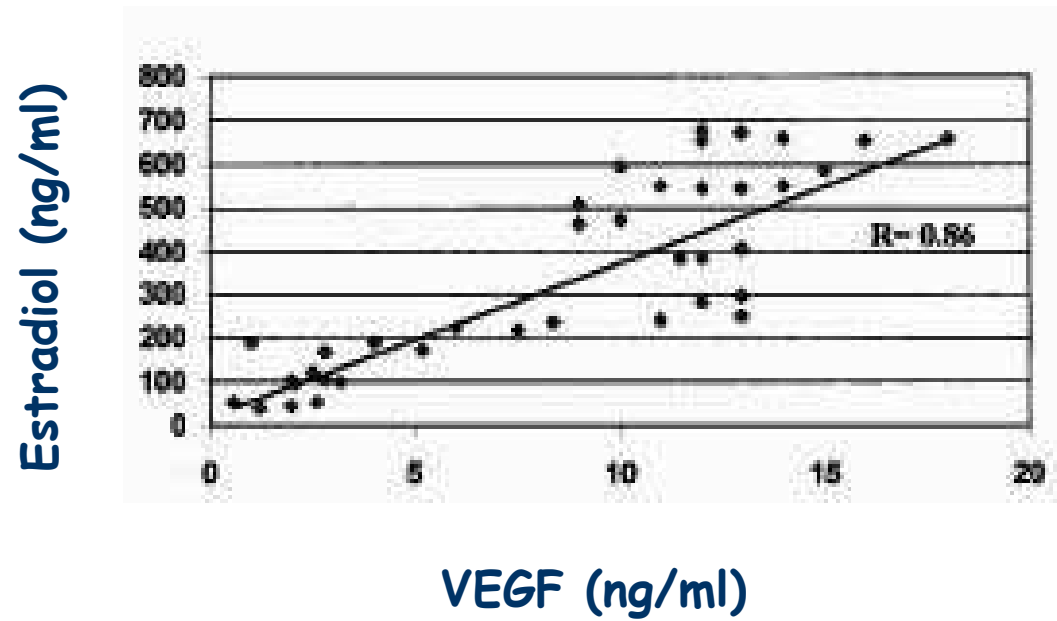


WB

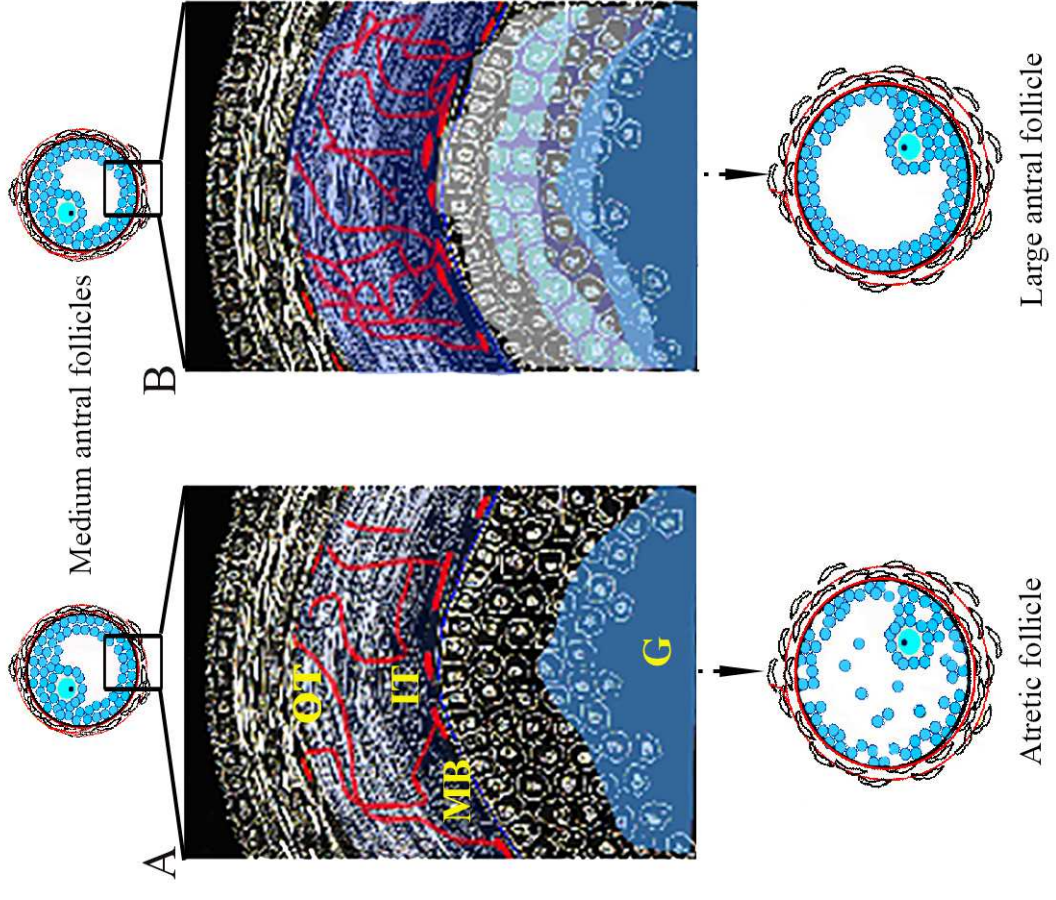
VEGF: follicular fluid



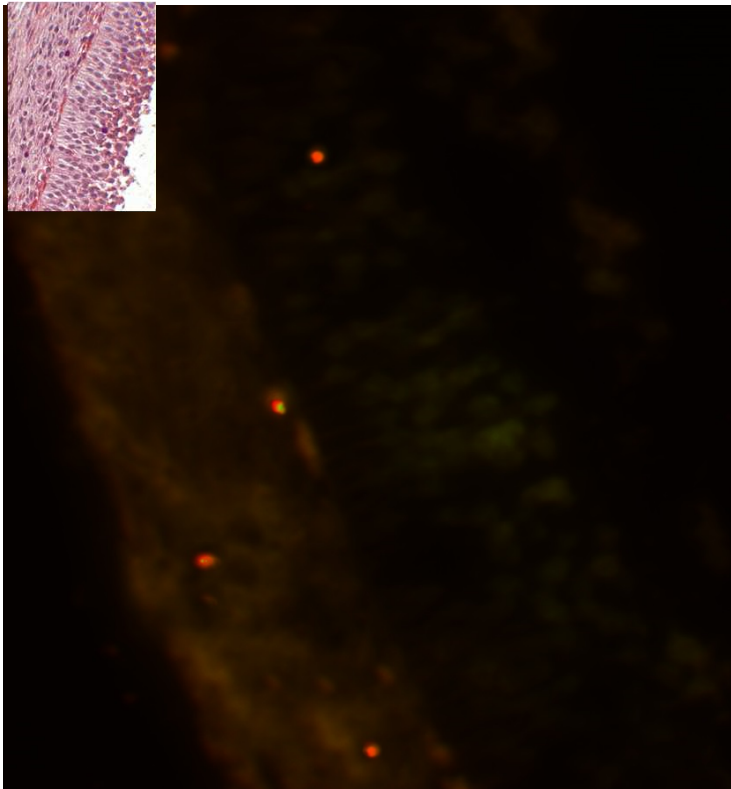
ESTROGEN- VEGF CORRELATION



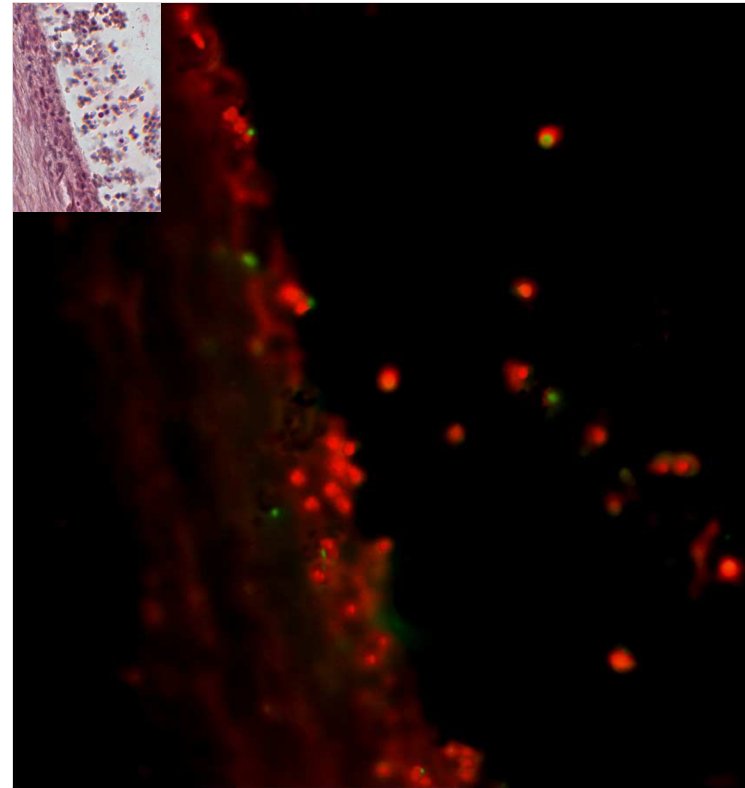
BIMODAL DISTRIBUTION OF MEDIUM ANTRAL FOLLICLES



APOPTOSIS IN MEDIUM ANTRAL FOLLICLES

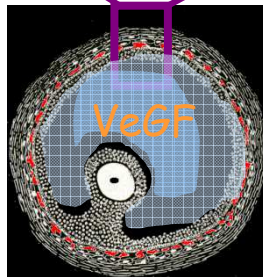
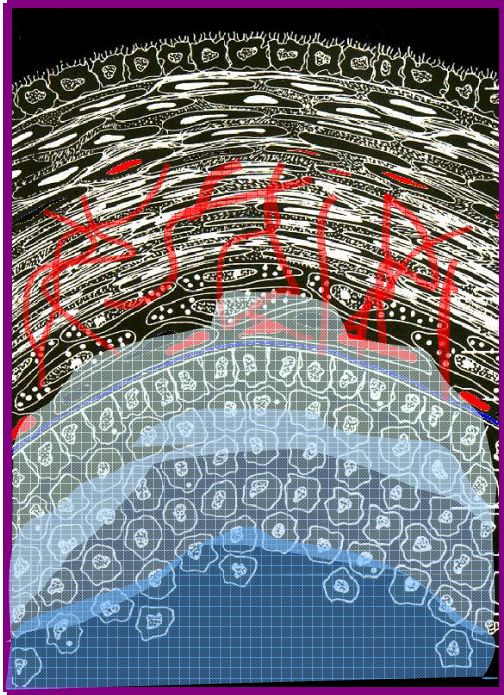


Antral Follicle

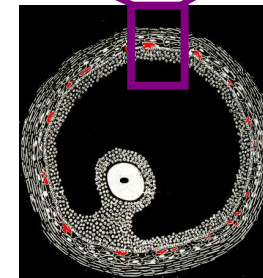
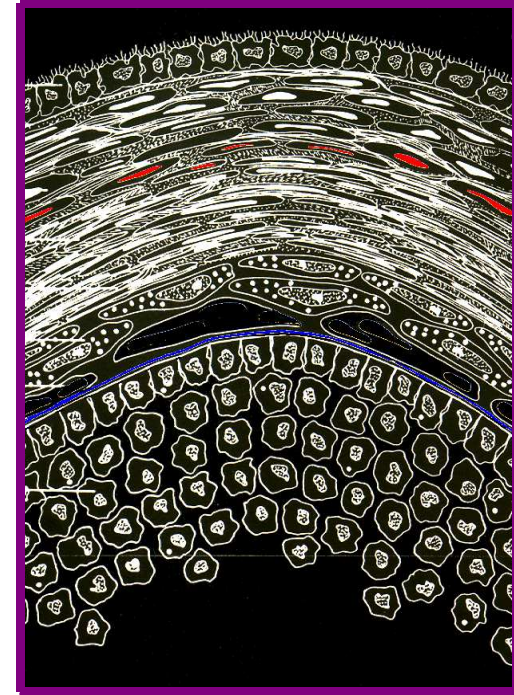


Atretic Follicle

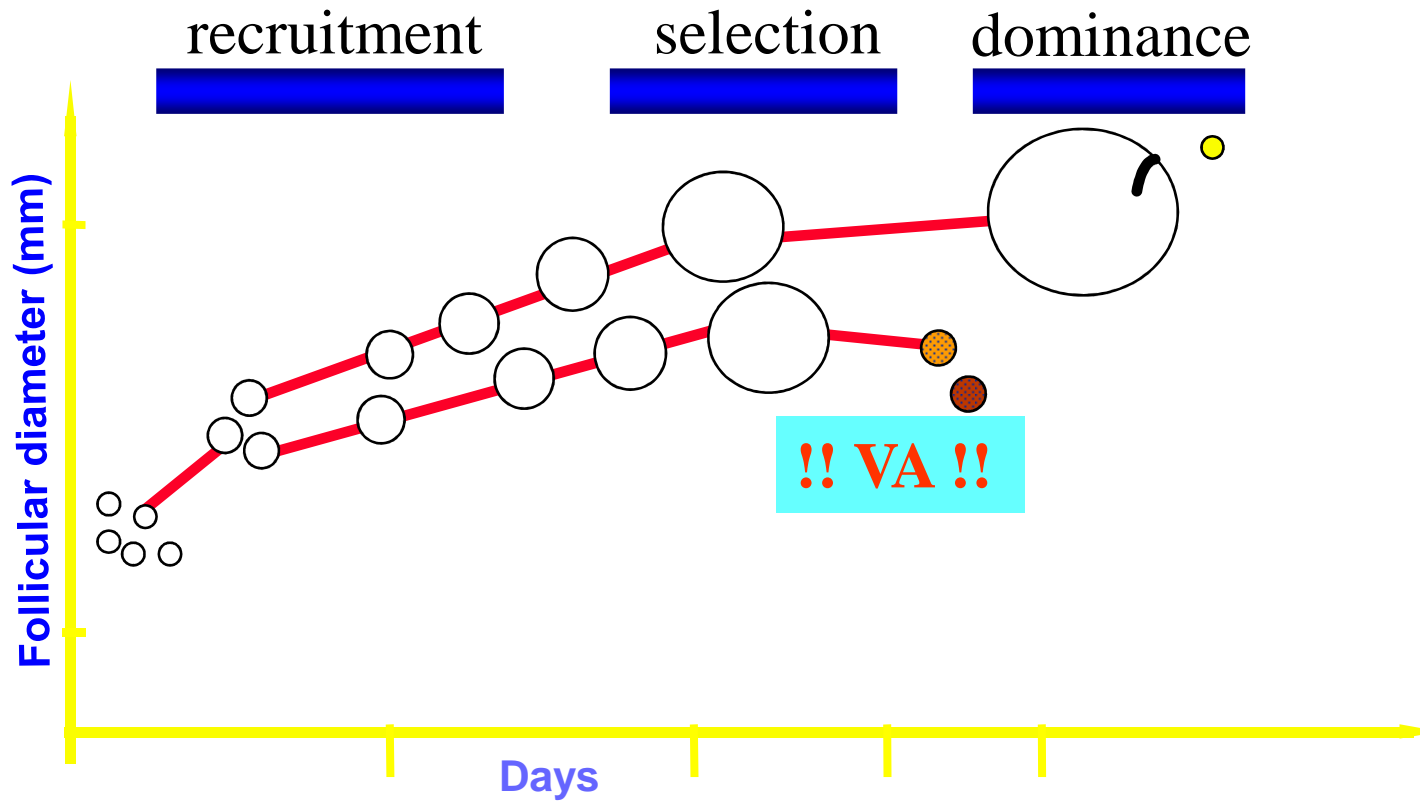
Antral Follicle



Atretic Follicle

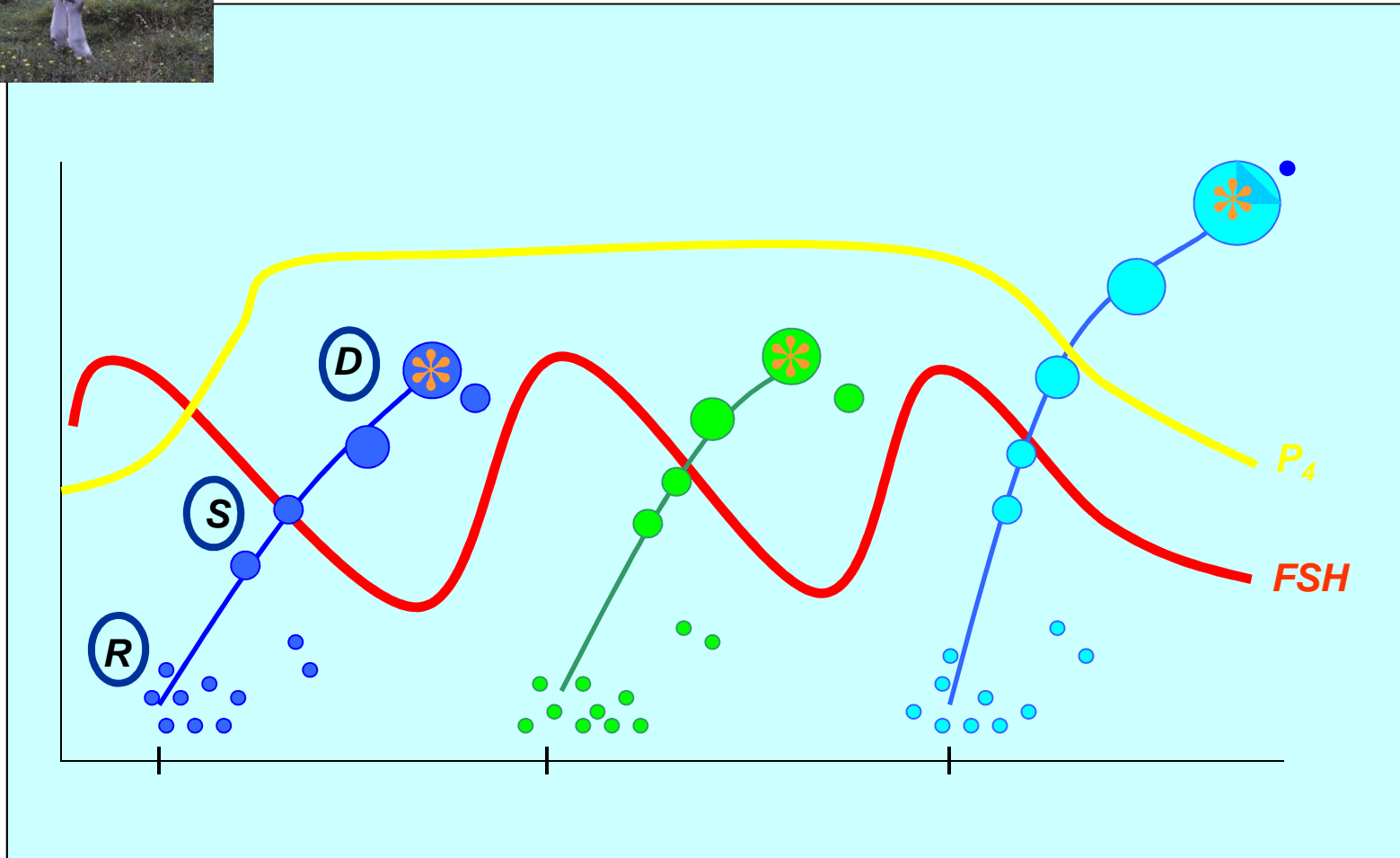


estrus cycle





estrus cycle



R= recruitment
S= selection
D= dominance

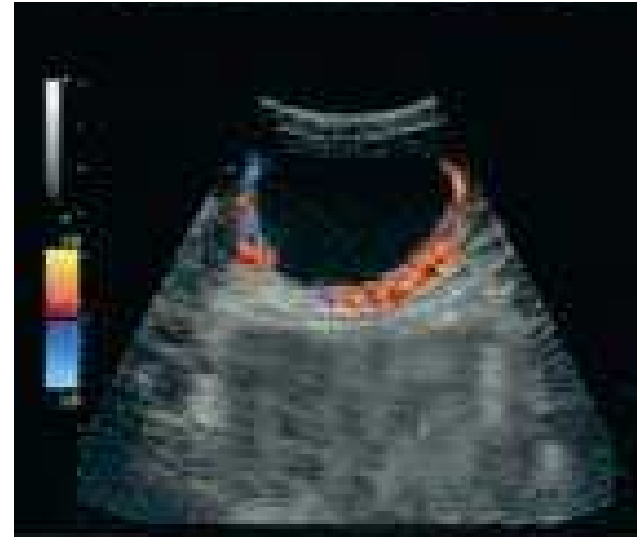
* dominant Follicle



transrectal ultrasonography



dominant follicle ana-
ovulatory



dominant follicle
ovulatory