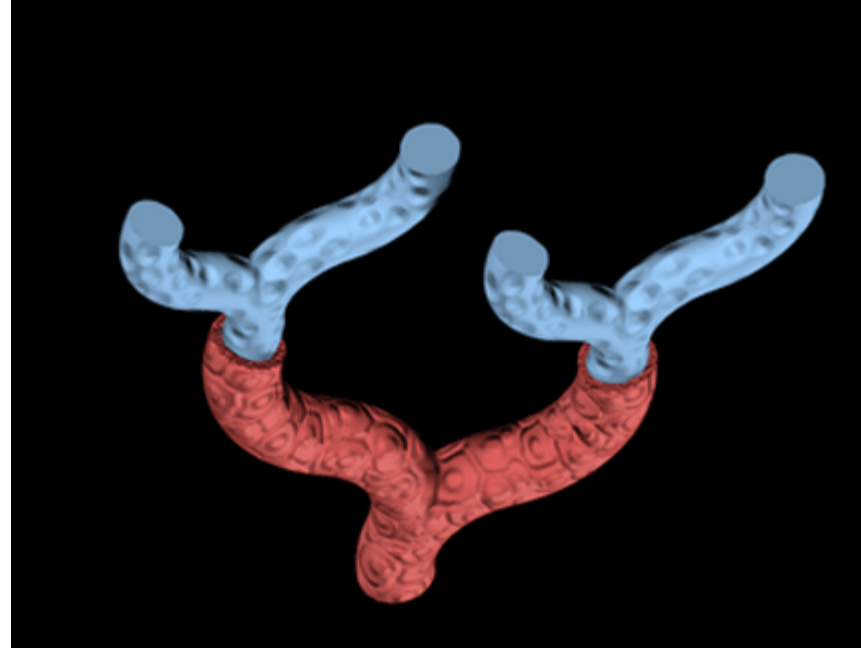
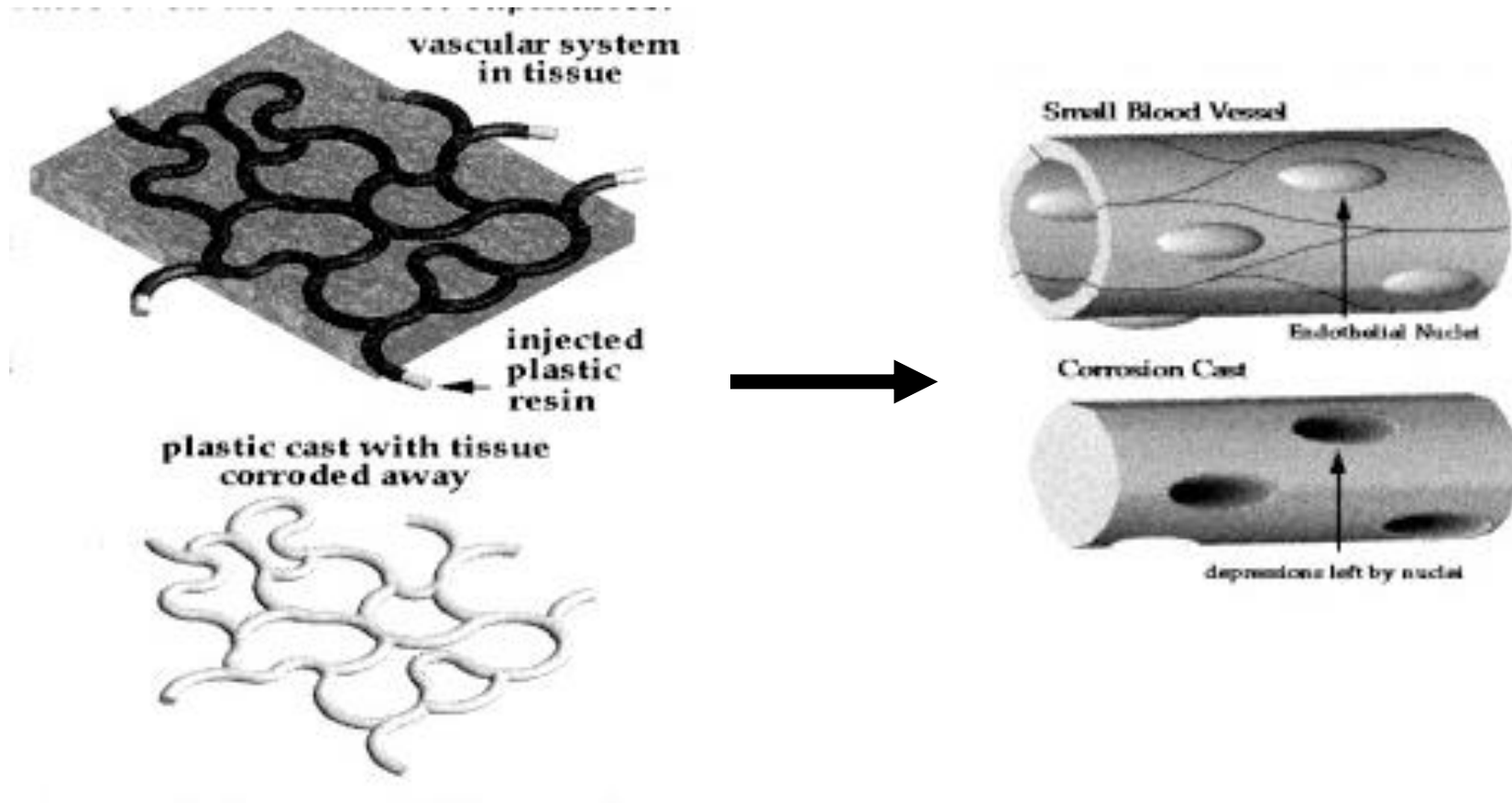


# Vascular Corrosion Casting



The entire vascular system of a whole animal or organ down to the smallest capillaries can be injected with a plastic polymer which fills the blood space and rapidly polymerizes. When the tissue is subsequently corroded away with an alkali solution, a hardened cast remains which accurately represents the essential geometry of the original vascular system. These casts can be examined with dissecting microscope (with limited magnification and depth of field) or a scanning electron microscope which provides striking resolution and depth of focus.

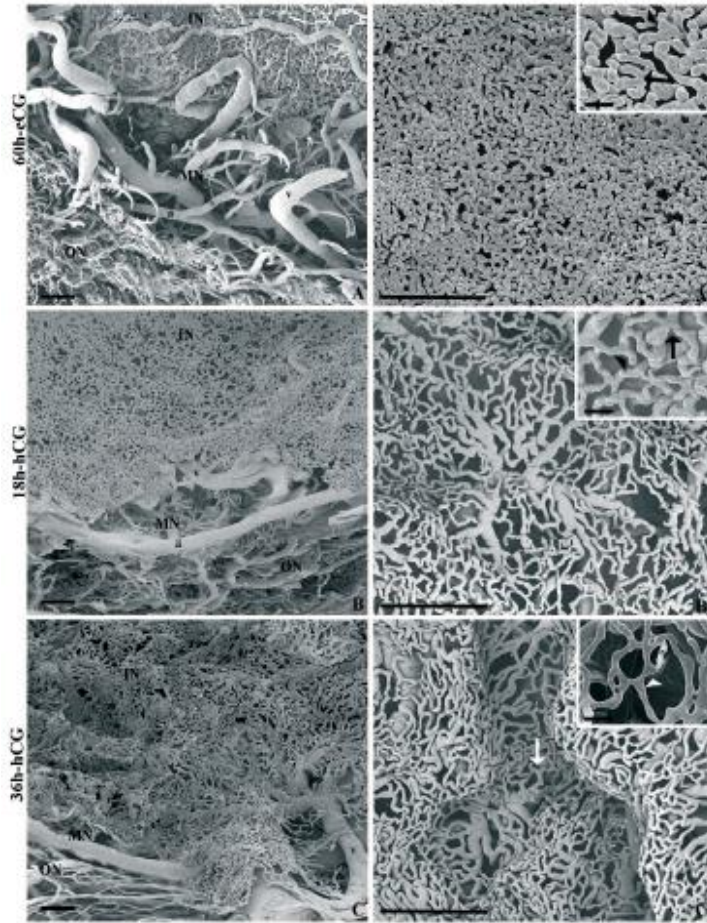
# VASCULAR CORROSION CASTING





Rabbit ovary photographed with light microscopy.

# VASCULAR CORROSION CASTING



Corrosion cast of microvessels in the ovary of a sow  
Scanning electron micrograph