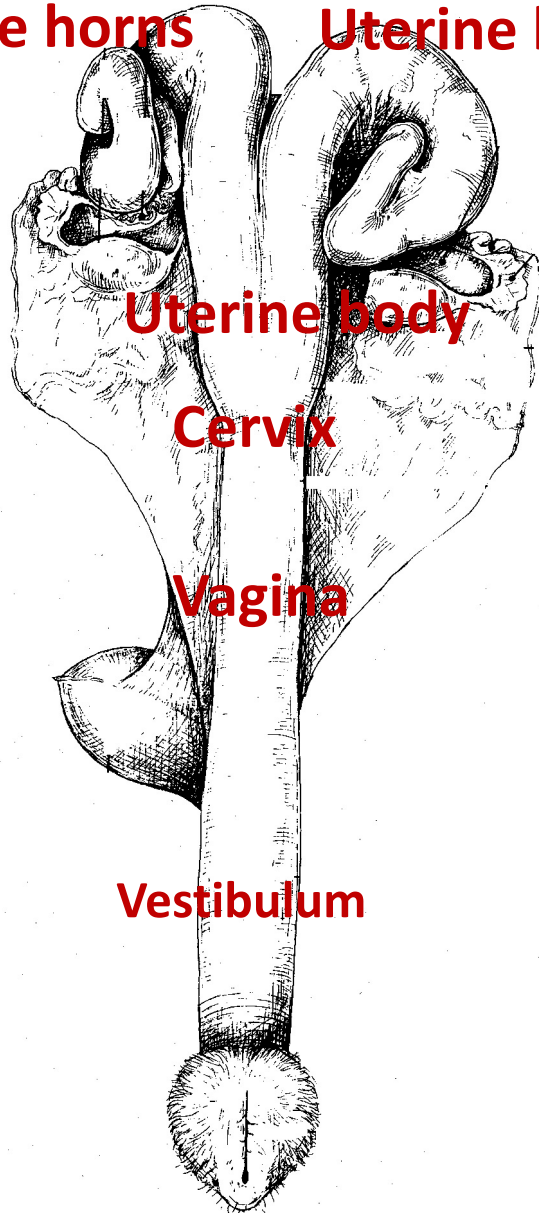


A photograph of a sheep and two lambs in a green field. The sheep is in the center, looking directly at the camera. It has a thick, light-colored woolly coat and a small orange tag on its right ear. Two smaller lambs are standing on either side of the sheep, also looking towards the camera. The background is a vast, green, grassy field.

La membrana amniotica di pecora

# The uterus: ewe (sheep)

Uterine horns      Uterine horns



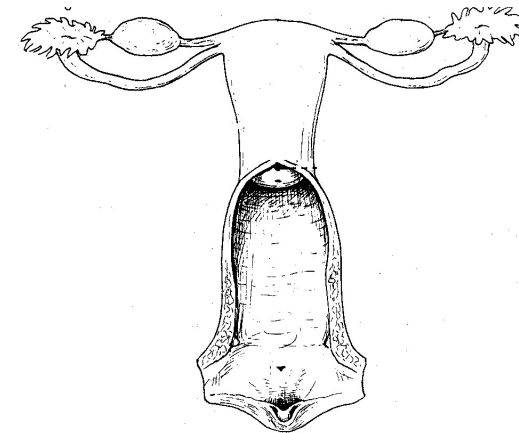
Uterine body

Cervix

Vagina

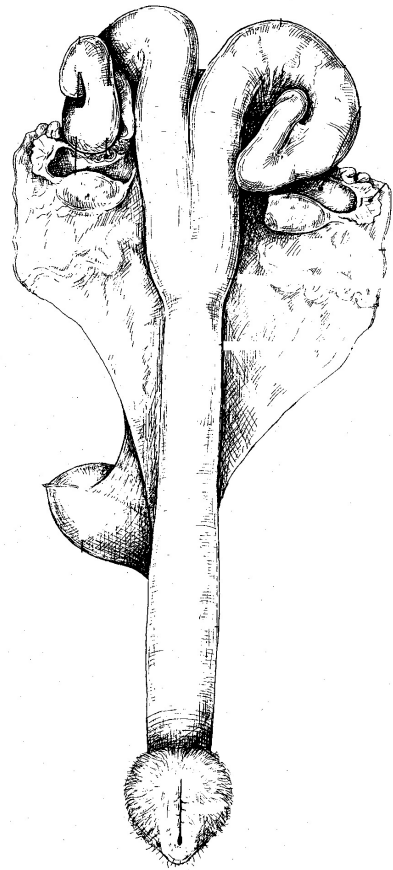
Vestibulum

**simplex:**  
primate, human





# Ewe: bicornuate uterus



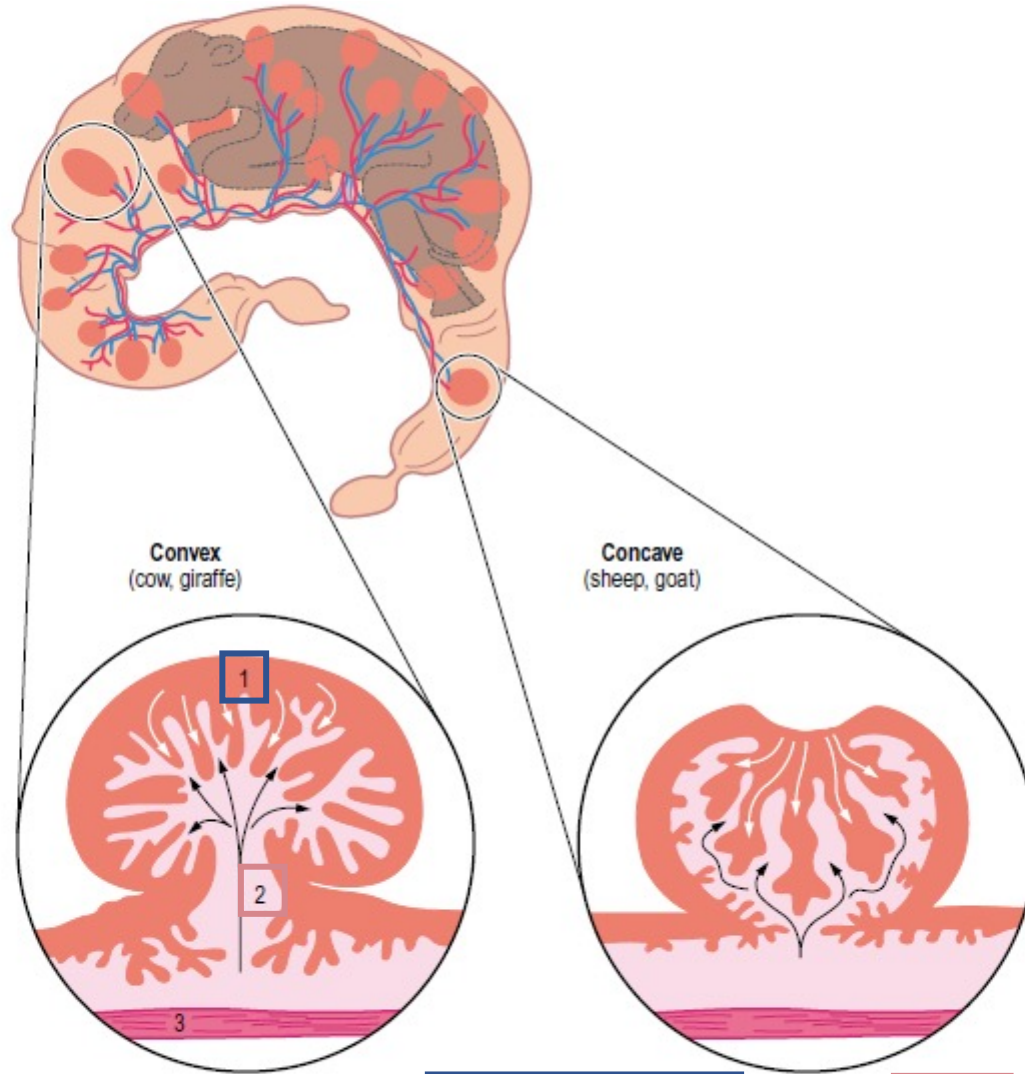
Uterus: cavity







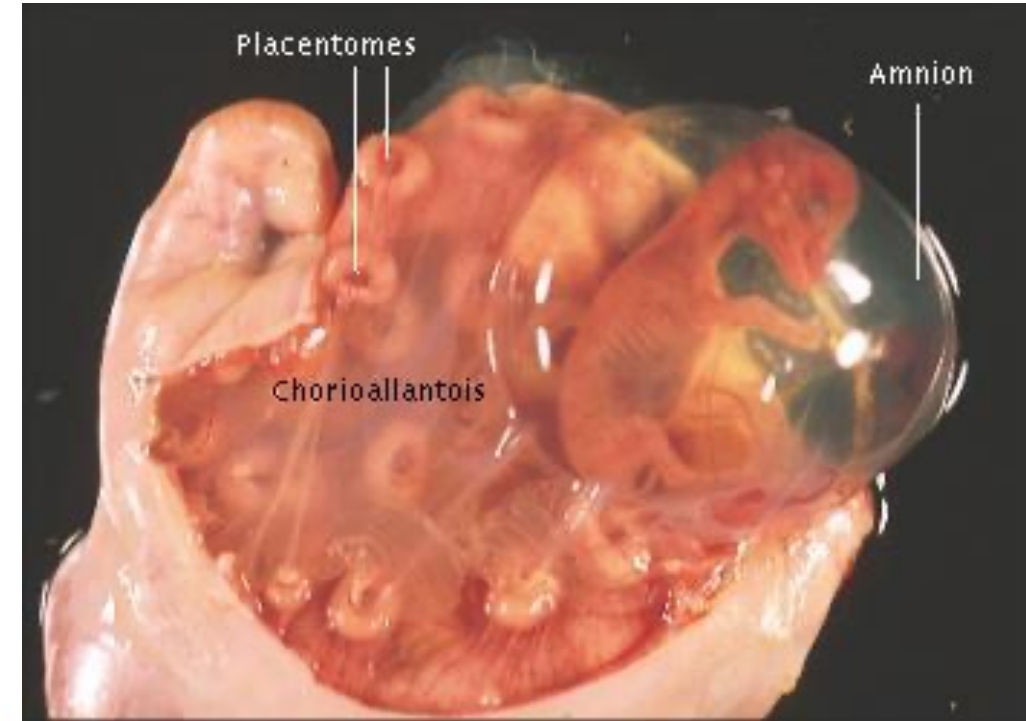
# Placentation: Ruminants



**1. Cotyledon:** the fetal side of the placenta

**2. Caruncle:** the maternal side of the placenta

**Placentome:** a cotyledon and caruncle together

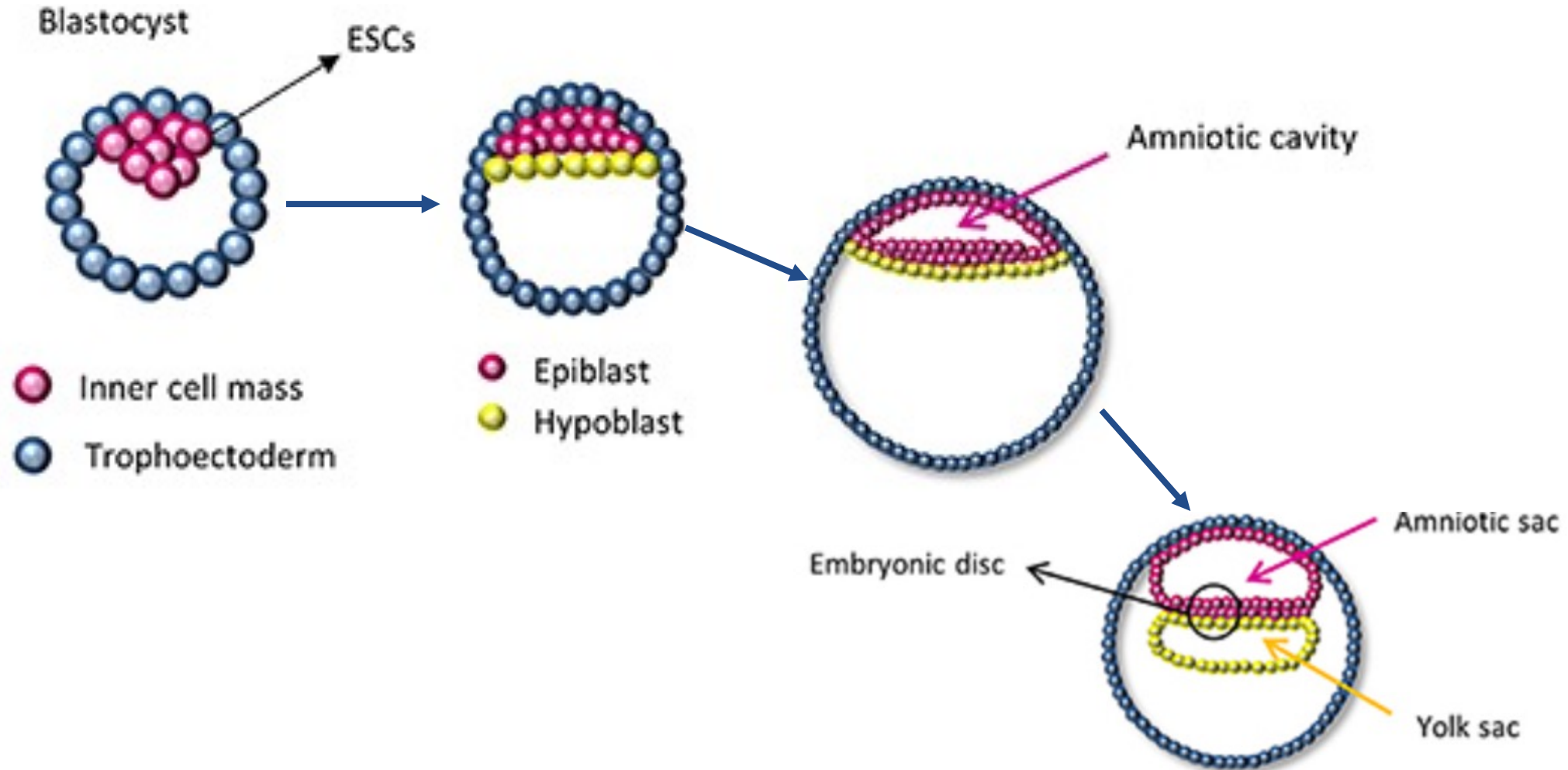


**Fig. 9-6:** The cotyledonary placenta of the ruminants. 1: Chorioallantois (cotyledon) forming villi; 2: Caruncle with crypts enclosing the villi; 3: Myometrium.

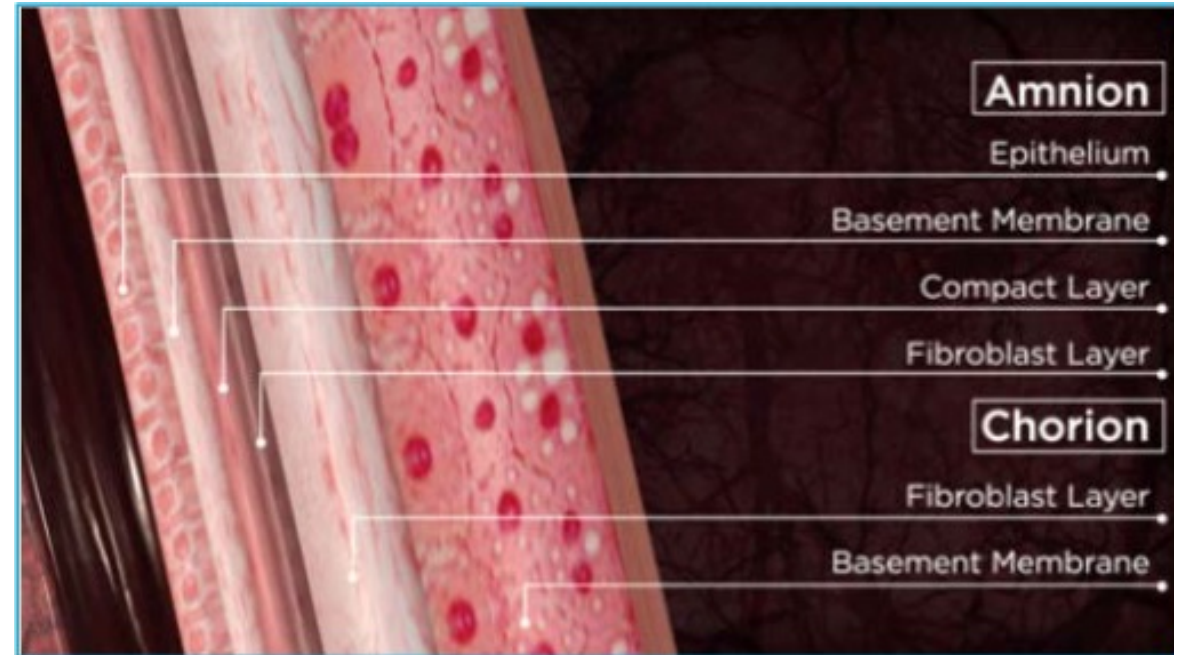
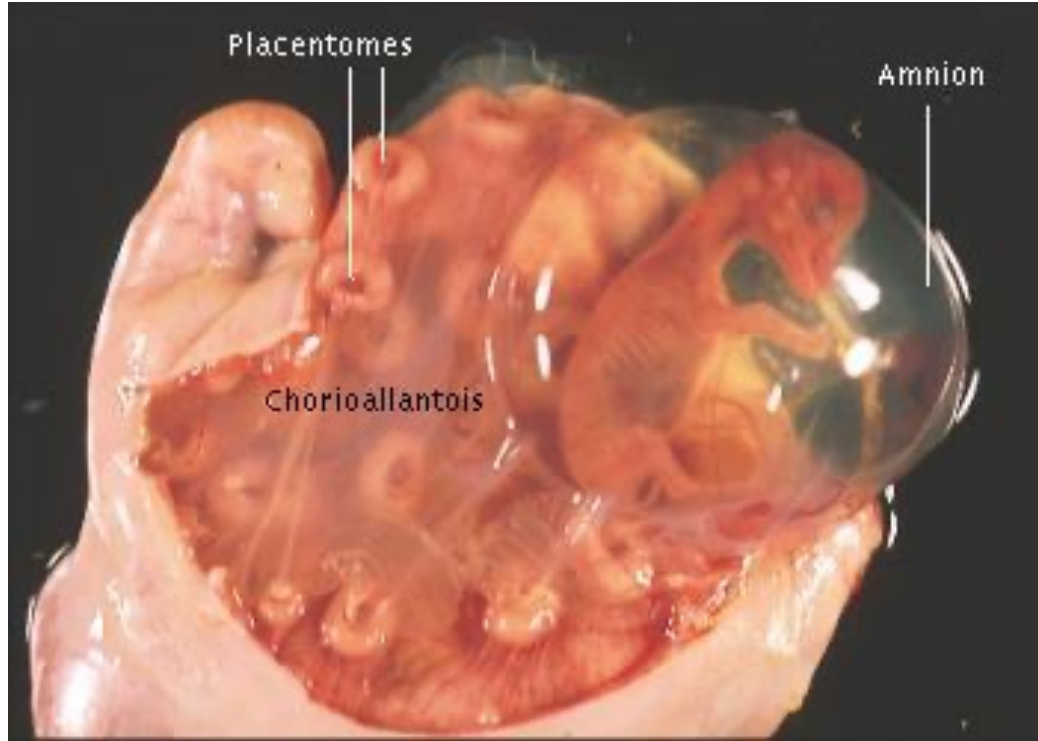
## Cotyledonary Placenta

# The embryonic origin of the amniotic membrane

---

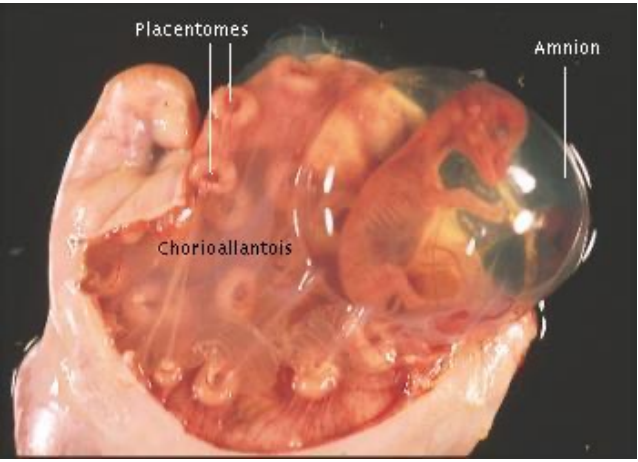


# The amniotic membrane

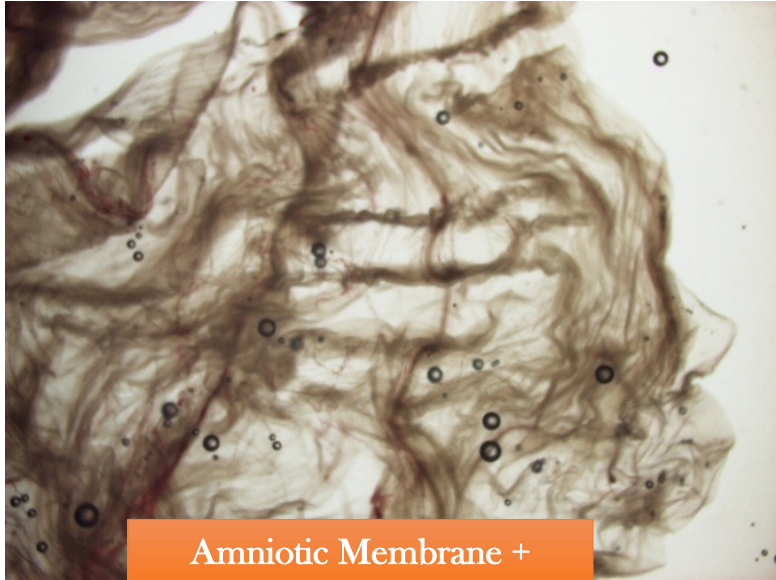


- È lo **strato più interno** delle membrane fetali.
- **Protegge** il feto durante la gravidanza.
- È costituita da un singolo strato di **cellule epiteliali** adese ad una **membrana basale** che poggia su uno **stroma avascolare**.





Sheep Placenta



Amniotic Membrane +  
Chorionallantois



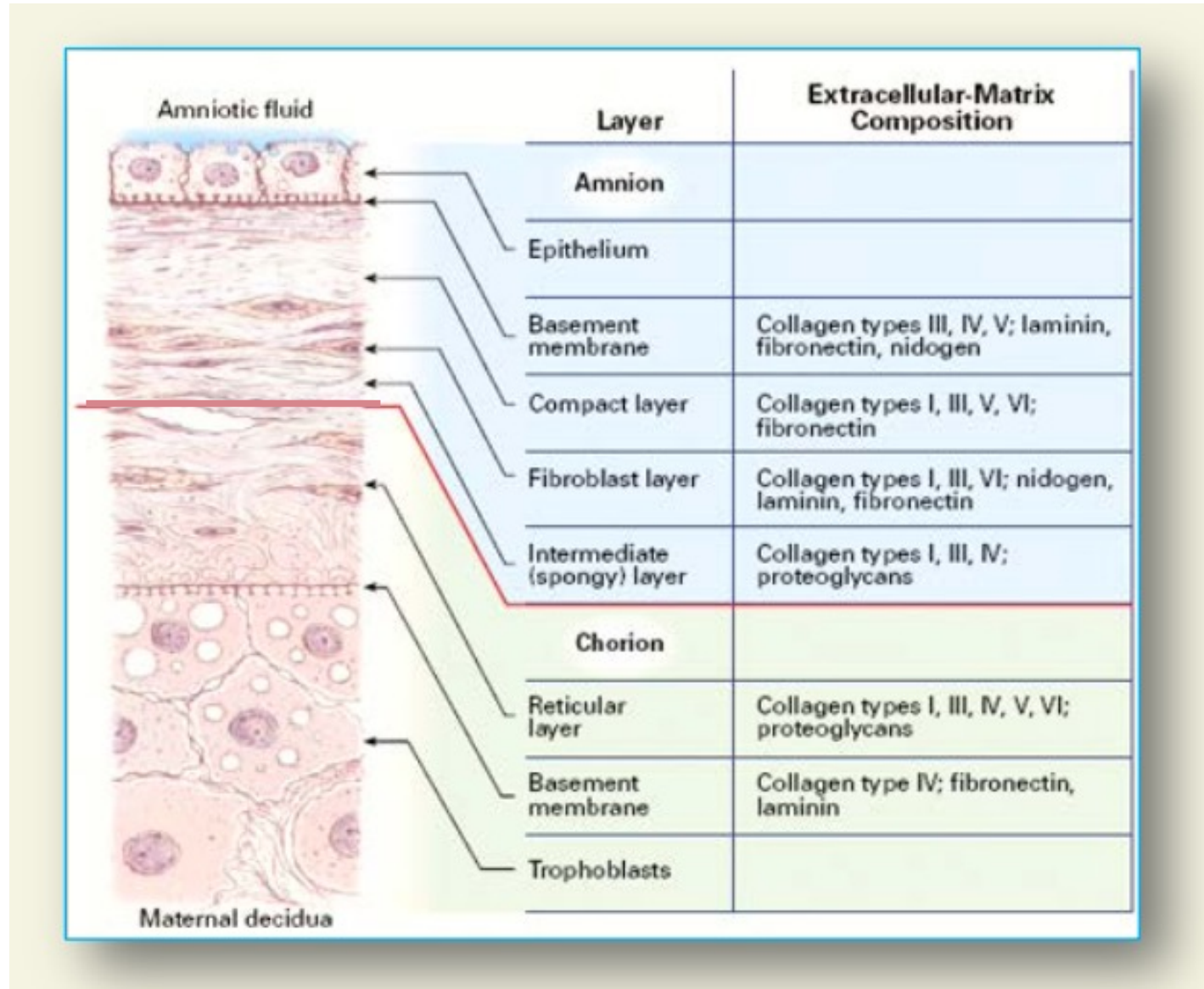
Amniotic membrane



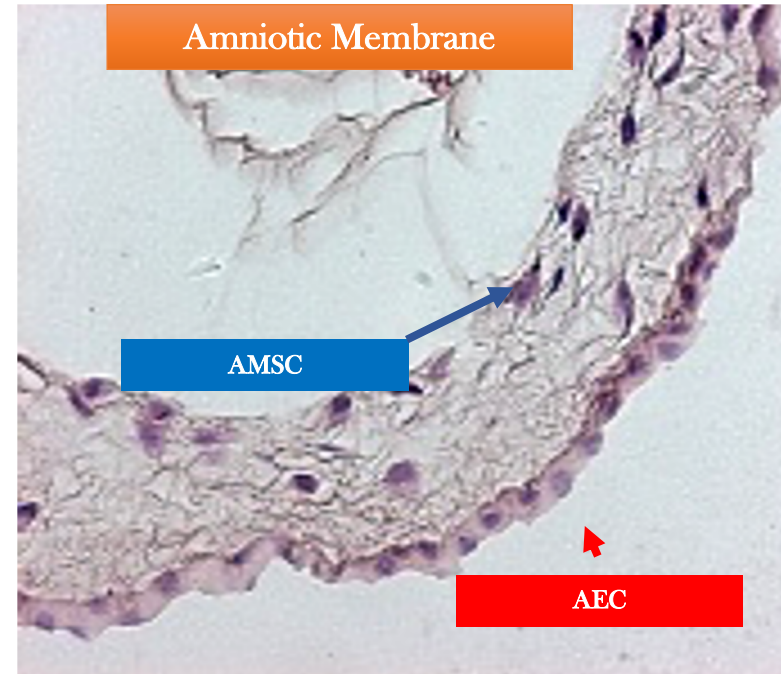
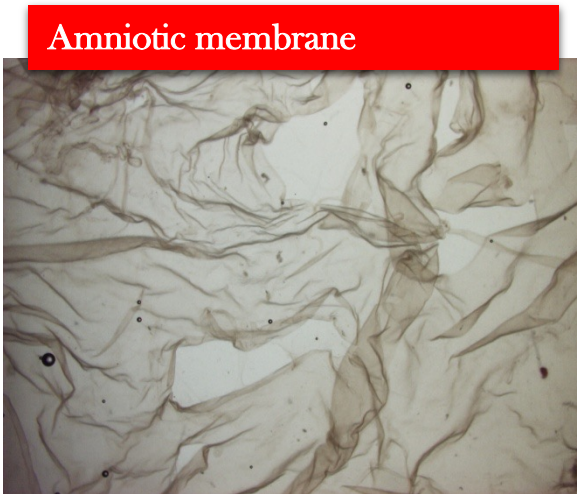
Chorionallantois



# The amniotic membrane: histology



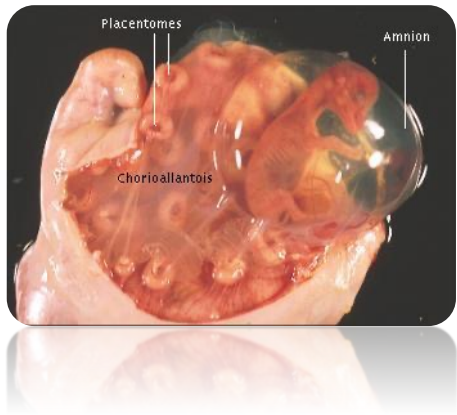
# The amniotic membrane: histology



H.E



# AECs characterization



Vimentin / DAPI

Cytokeratin 8 / DAPI

$\alpha$ -SMA / DAPI

E-Cadherin / DAPI

